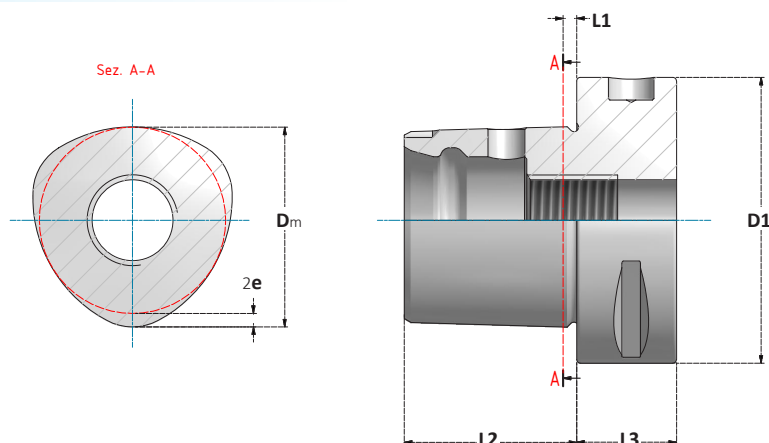


**ATTACCO POLIGONALE**  
*POLYGONAL SHANK***DIMENSIONI DELL'ATTACCO**  
*SHANK DIMENSIONS*

ATTACCO SHANK	D1	Dm	e	L1	L2	L3
					±0,1	min
<b>50</b>	50	35	1,12	3	30	20
<b>63</b>	63	44	1,4	3	38	22

**CARATTERISTICHE:**

Costruiti in acciaio certificato in barre.  
 Eseguiti trattamenti termici da fornitori certificati.  
 Rettificati di precisione esternamente e internamente.  
 Controllati con strumenti di misura certificati.  
 Prebilanciati nei gradi indicati nelle pagine di catalogo.

**FEATURES:**

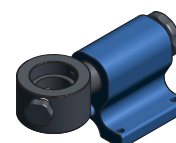
Made of certified steel.  
 Heat treatments performed by certified suppliers.  
 Precision grinding externally and internally.  
 Checked with certified measuring instruments.  
 Pre-balanced as indicated in the catalog pages.

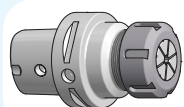
BILANCIATURA  
BALANCING **P.360**

RACCORDI PER REFRIGERANTE **P.306**  
COOLING TUBES



SUPPORTI DI MONTAGGIO **P.315**  
ASSEMBLY DEVICES



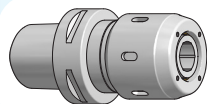


**MANDRINI PORTAPINZA ER**

*COLLET CHUCKS ER*

**DIN ISO 15488** (DIN6499)

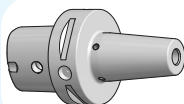
*PAG. 58*



**MANDRINI A FORTE SERRAGGIO**

*POWER MILLING CHUCKS*

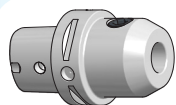
*PAG. 59*



**MANDRINI  
A CALETTAMENTO A CALDO**

*SHRINK FIT CHUCKS*

*PAG. 60*

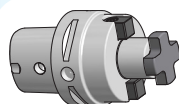


**MANDRINI PORTAFRESA  
WELDON**

*END MILL HOLDERS WELDON*

**DIN 1835-2**

*PAG. 62*

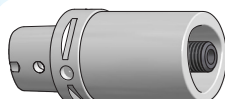


**MANDRINI PORTAFRESA FISSI**

*SHELL MILL HOLDERS*

**DIN 6357**

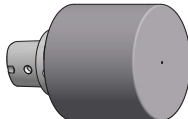
*PAG. 63*



**PROLUNGHE E RIDUZIONI**

*EXTENSIONS AND ADAPTERS*

*PAG. 64*



**MANDRINI  
CON STELO LAVORABILE**

*BLANK ARBORS*

*PAG. 65*

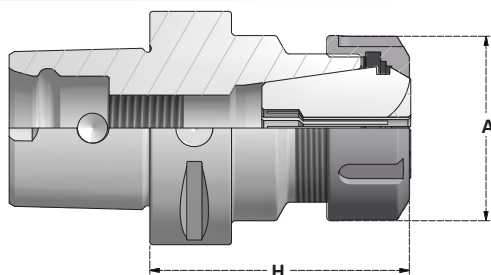


**BARRE DI COLLAUDO**

*TEST ARBORS*

*PAG. 330*



**MANDRINI PORTAPINZA ER**  
ER COLLET CHUCKSSCHEDA TECNICA  
TECHNICAL DATA  
ERC P. 338

Articolo	H
<b>CPT50.H100.ERC16</b>	100
<b>CPT50.H55.ERC25</b>	55
<b>CPT50.H57.ERC32</b>	57
<b>CPT50.H100.ERC32</b>	100

Articolo	H
<b>CPT63.H100.ERC16</b>	100
<b>CPT63.H60.ERC20</b>	60
<b>CPT63.H100.ERC20</b>	100
<b>CPT63.H60.ERC25</b>	60
<b>CPT63.H100.ERC25</b>	100
<b>CPT63.H70.ERC32</b>	70
<b>CPT63.H100.ERC32</b>	100
<b>CPT63.H65.ERC40</b>	65

	A	Collets Range	Ghiera Nut
<b>...ERC16</b>	28	1÷10	G16SE
<b>...ERC20</b>	34	1÷14	G20SE
<b>...ERC25</b>	42	1÷20	G25S
<b>...ERC32</b>	50	2÷22	G32S
<b>...ERC40</b>	63	3÷30	G40S

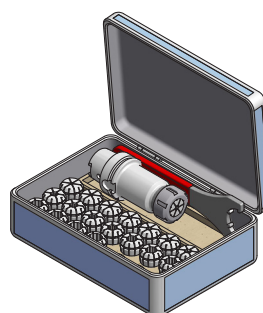
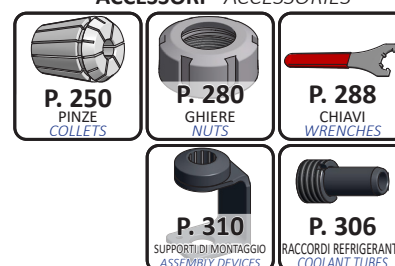
**KIT - MANDRINO, CHIAVE E PINZE**

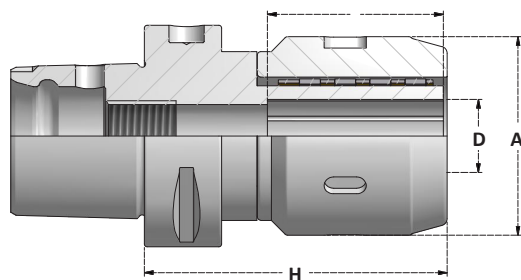
KIT - TOOLHOLDER, WRENCH AND COLLETS

Articolo	Pinze Collets	Mandrino Toolholder	Chiave Wrench
<b>BX.CPT63.ERC32-6</b>	ERC32.D6-D8-D10-D12-D16-D20	CPT63.H70.ERC32	CH32S
<b>BX.CPT63.ERC40-7</b>	ERC40.D6-D8-D10-D12-D16-D20-D25	CPT63.H65.ERC40	CH40S

Articolo	Pinze Collets	Ø Pinze Collets	Mandrino Toolholder	Chiave Wrench
<b>BX.CPT50.ERC25</b>	ERC25	D2÷16	CPT50.H55.ERC25	CH25S
<b>BX.CPT50.ERC32</b>	ERC32	D3÷20	CPT50.H57.ERC32	CH32S
<b>BX.CPT63.ERC25</b>	ERC25	D2÷16	CPT63.H60.ERC25	CH25S
<b>BX.CPT63.ERC32</b>	ERC32	D3÷20	CPT63.H70.ERC32	CH32S
<b>BX.CPT63.ERC40</b>	ERC40	D4÷26	CPT63.H65.ERC40	CH40S

**ACCESSORI - ACCESSORIES**

**MANDRINI A FORTE SERRAGGIO**  
POWER MILLING CHUCKSSCHEDA TECNICA  
TECHNICAL DATA  
FS | P. 344

Articolo	H
<b>CPT50.H75.FS20</b>	75
<b>CPT50.H90.FS32</b>	90

Articolo	H
<b>CPT63.H75.FS20</b>	75
<b>CPT63.H85.FS32</b>	85

**G6,3**

15000 r.p.m.



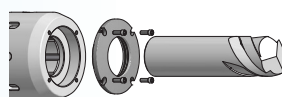
/0,005

CANALINI  
CHANNELSCHIAVE INCLUSA  
WRENCH INCLUDED

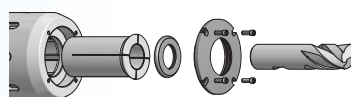
	D	A
...FS20	20	26
...FS32	32	28

Serrare la ghiera di bloccaggio  
fino al finecorsaTighten the locking nut  
up to the limitForza di serraggio  
Clamping forceFS20 **500Nm**  
FS32 **1000Nm****DISCHI DI TENUTA PER MANDRINI A FORTE SERRAGGIO**  
SEALED CAPS FOR POWER MILLING CHUCKS**DISCHI DI TENUTA PER DIAMETRO NOMINALE**  
SEALED CAPS FOR NOMINAL DIAMETER

Articolo	D
<b>CFS20.D20</b>	20
<b>CFS32.D32</b>	32

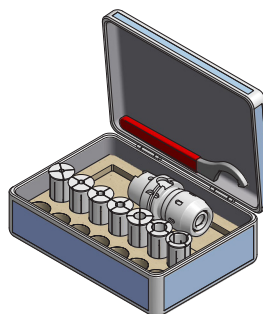
A TENUTA  
SEALED**DISCHI DI TENUTA PER L'UTILIZZO DELLE PINZE DI RIDUZIONE**  
SEALED CAPS FOR REDUCTION COLLETS USING

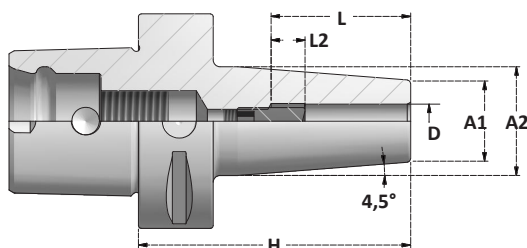
Articolo	D	RG Range
<b>CFS20.RG</b>	RG32	D4÷D16
<b>CFS32.RG</b>	RG40	D6÷D25

SCHEDA TECNICA  
TECHNICAL DATA  
FS | P. 344**P. 284**DISCHETTI RG  
RG SEALED DISCS**KIT - MANDRINO, CHIAVE E PINZE**

## KIT - TOOLHOLDER, WRENCH AND COLLETS

Articolo	Pinze Collets	Ø Pinze Ø Collets	Mandrino con chiave Toolholder with wrench
<b>BX.CPT50.FS20</b>	4SR20	D6 D8 D10 D12 D16	CPT50.H75.FS20
<b>BX.CPT50.FS32</b>	4SR32	D6 D8 D10 D12 D16 D20 D25	CPT50.H90.FS32
<b>BX.CPT63.FS20</b>	4SR20	D6 D8 D10 D12 D16	CPT63.H75.FS20
<b>BX.CPT63.FS32</b>	4SR32	D6 D8 D10 D12 D16 D20 D25	CPT63.H85.FS32

**ACCESSORI - ACCESSORIES****P. 276**  
PINZE  
COLLETS**P. 289**  
CHIAVI  
WRENCHES**P. 310**  
SUPPORTI DI MONTAGGIO  
ASSEMBLY DEVICES**P. 306**  
RACCORDI REFRIGERANTE  
COOLANT TUBES

**MANDRINI A CALETTAMENTO A CALDO**  
SHRINK FIT CHUCKS**G2,5**  
25000 r.p.m.SCHEDA TECNICA  
TECHNICAL DATA  
TM | P. 340

Articolo	H
CPT50.H75.TM6	75
CPT50.H75.TM8	75
CPT50.H75.TM10	75
CPT50.H75.TM12	75
CPT50.H80.TM14	80
CPT50.H80.TM16	80
CPT50.H80.TM18	80
CPT50.H85.TM20	85

Articolo	H
CPT63.H80.TM3	80
CPT63.H80.TM4	80
CPT63.H80.TM5	80
CPT63.H80.TM6	80
CPT63.H80.TM8	80
CPT63.H80.TM10	80
CPT63.H80.TM12	80
CPT63.H85.TM14	85
CPT63.H85.TM16	85
CPT63.H85.TM18	85
CPT63.H85.TM20	85
CPT63.H90.TM25	90
CPT63.H95.TM32	95

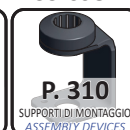
		D	L	A1	A2
TM3	*	3	12	10	20
TM4	*	4	16	15	25
TM5	*	5	20	15	25
TM6		6	36	21	27
TM8		8	36	21	27
TM10		10	41	24	32
TM12		12	46	24	32
TM14		14	46	24	32
TM16		16	49	24	32
TM18		18	49	33	42
TM20		20	51	33	42
TM25		25	57	44	53
TM32		32	61	44	53

\* Senza vite di regolazione

\* Without adjusting screw

Profondità regolabile: **L2= 10mm**  
Adjustable depth:

## ACCESSORI - ACCESSORIES





DIN ISO 26623-1

CPT

TM JET

**MANDRINI A CALETTAMENTO A CALDO JET**

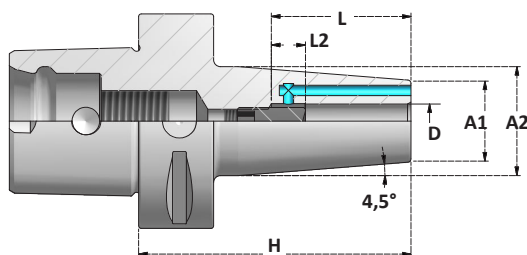
CON FORI PER IL REFRIGERANTE

SHRINK FIT CHUCKS **JET** TYPE

WITH HOLES FOR COOLANT

**G2,5**

25000.p.p.m.

SCHEDA TECNICA  
TECHNICAL DATA  
TM | P. 340

Articolo	H
CPT50.H75.TM6JET	75
CPT50.H120.TM6JET	120
CPT50.H75.TM8JET	75
CPT50.H120.TM8JET	120
CPT50.H75.TM10JET	75
CPT50.H120.TM10JET	120
CPT50.H75.TM12JET	75
CPT50.H120.TM12JET	120
CPT50.H80.TM14JET	80
CPT50.H120.TM14JET	120
CPT50.H80.TM16JET	80
CPT50.H120.TM16JET	120
CPT50.H80.TM18JET	80
CPT50.H120.TM18JET	120
CPT50.H85.TM20JET	85
CPT50.H120.TM20JET	120

Articolo	H
CPT63.H80.TM6JET	80
CPT63.H120.TM6JET	120
CPT63.H80.TM8JET	80
CPT63.H120.TM8JET	120
CPT63.H80.TM10JET	80
CPT63.H120.TM10JET	120
CPT63.H80.TM12JET	80
CPT63.H120.TM12JET	120
CPT63.H85.TM14JET	85
CPT63.H120.TM14JET	120
CPT63.H85.TM16JET	85
CPT63.H120.TM16JET	120
CPT63.H85.TM18JET	85
CPT63.H120.TM18JET	120
CPT63.H85.TM20JET	85
CPT63.H120.TM20JET	120
CPT63.H90.TM25JET	90
CPT63.H120.TM25JET	120
CPT63.H95.TM32JET	95
CPT63.H120.TM32JET	120

	D	L	A1	A2
...TM6	6	36	21	27
...TM8	8	36	21	27
...TM10	10	41	24	32
...TM12	12	46	24	32
...TM14	14	46	24	32
...TM16	16	49	24	32
...TM18	18	49	33	42
...TM20	20	51	33	42
...TM25	25	57	44	53
...TM32	32	61	44	53

Profondità regolabile: **L2= 10mm**  
Adjustable depth:Altre lunghezze fornibili a richiesta  
Other lengths available on request**3 DIVERSE MODALITÀ DI UTILIZZO****3 DIFFERENT APPLICATIONS**

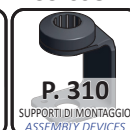
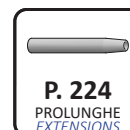
Senza montare i grani in dotazione si ha la massima portata del liquido refrigerante

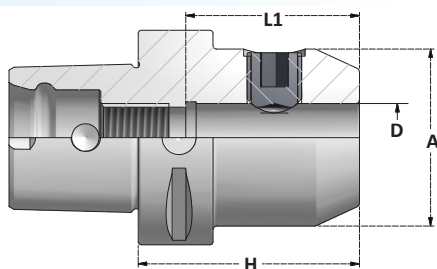
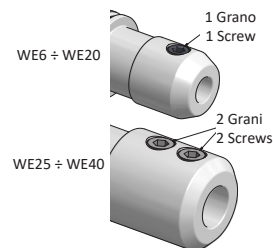
*Not using supplied plugs you have maximum flow of coolant*

Con l'utilizzo dei grani forati aumenta la pressione - ideale per lavorazioni ad alte velocità

*Using plugs with hole the pressure increases - it's used for high speed works*

Con l'utilizzo dei grani di chiusura si può lavorare con utensili con fori per il refrigerante

*Mounting sealing plugs tools with coolant through can be used***ACCESSORI - ACCESSORIES**

**MANDRINI PORTAFRESA WELDON**  
END MILL HOLDERS WELDONSCHEDA TECNICA  
TECHNICAL DATA  
WE P. 347

Articolo	H
CPT50.H50.WE6	50
CPT50.H50.WE8	50
CPT50.H55.WE10	55
CPT50.H60.WE12	60
CPT50.H60.WE14	60
CPT50.H60.WE16	60
CPT50.H60.WE18	60
CPT50.H60.WE20	60
CPT50.H80.WE25	80

Articolo	H
CPT63.H55.WE6	55
CPT63.H55.WE8	55
CPT63.H60.WE10	60
CPT63.H60.WE12	60
CPT63.H60.WE14	60
CPT63.H65.WE16	65
CPT63.H65.WE18	65
CPT63.H65.WE20	65
CPT63.H80.WE25	80
CPT63.H90.WE32	90
CPT63.H100.WE40	100

	D	L1	A	Grano Screw
...WE6	6	37	25	GR.WE6
...WE8	8	37	28	GR.WE8
...WE10	10	41	35	GR.WE10
...WE12	12	46	42	GR.WE12-14
...WE14	14	46	44	GR.WE12-14
...WE16	16	49	48	GR.WE16-18
...WE18	18	49	50	GR.WE16-18
...WE20	20	51	52	GR.WE20

	D	L1	A	Grano Screw
..WE25	25	59	65	2x GR.WE25
..WE32	32	63	72	2x GR.WE32-40
..WE40	40	73	80	2x GR.WE32-40

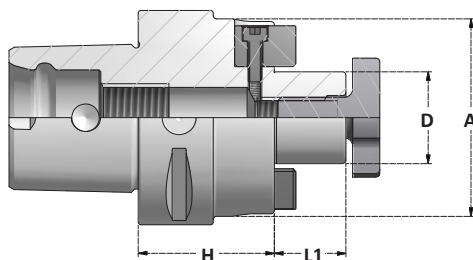
## ACCESSORI - ACCESSORIES





# MANDRINI PORTAFRESA FISSI

SHELL MILL HOLDERS



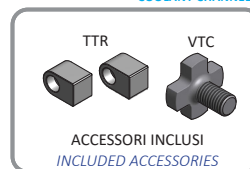
SCHEDA TECNICA  
TECHNICAL DATA  
D S | P. 349

Articolo	H
<b>CPT50.H35.D16S</b>	35
<b>CPT50.H25.D22S</b>	25
<b>CPT50.H25.D27S</b>	25
<b>CPT50.H40.D32S</b>	40

Articolo	H
<b>CPT63.H35.D16S</b>	35
<b>CPT63.H40.D22S</b>	40
<b>CPT63.H40.D27S</b>	40
<b>CPT63.H40.D32S</b>	40
<b>CPT63.H45.D40S</b>	45

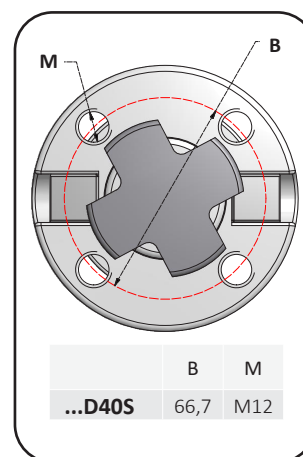


CANALI  
PER REFRIGERANTE  
COOLANT CHANNELS



ACCESSORI INCLUSI  
INCLUDED ACCESSORIES

	D	A	L1	TTR	VTC
<b>...D16S</b>	16	38	17	TTR.D16	VTC.D16
<b>...D22S</b>	22	48	19	TTR.D22	VTC.D22
<b>...D27S</b>	27	58	21	TTR.D27	VTC.D27
<b>...D32S</b>	32	78	24	TTR.D32	VTC.D32
<b>...D40S</b>	40	88	27	TTR.D40	VTC.D40



	B	M
<b>...D40S</b>	66,7	M12

### ACCESSORI - ACCESSORIES



**P. 304-305**  
ACCESSORI  
ACCESSORIES



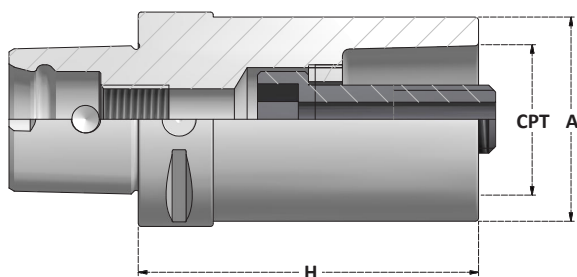
**P. 310**  
SUPPORTI DI MONTAGGIO  
ASSEMBLY DEVICES



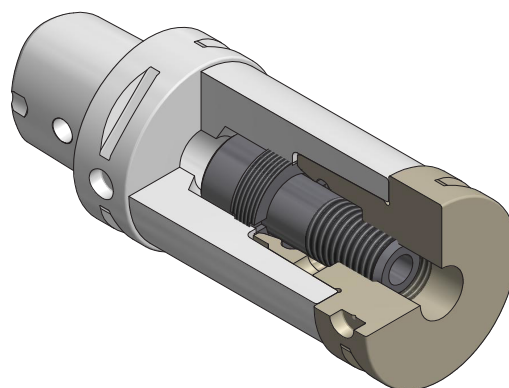
**P. 306**  
RACCORDI REFRIGERANTE  
COOLANT TUBES





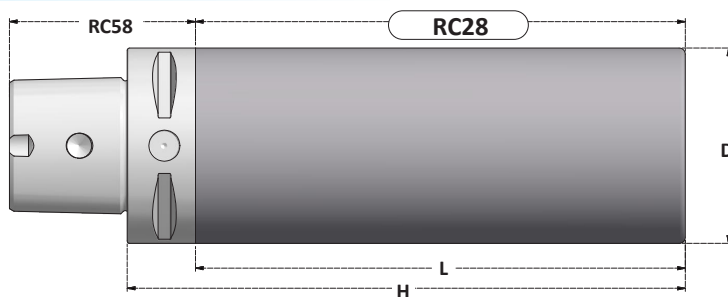
**RIDUZIONI E PROLUNGHE**  
*REDUCTIONS AND EXTENSIONS***PROLUNGHE**  
*EXTENSIONS*

Articolo	H	A	CPT
<b>CPT32.H60.CPT32</b>	60	32	CPT32
<b>CPT32.H80.CPT32</b>	80	32	CPT32
<b>CPT40.H60.CPT40</b>	60	40	CPT40
<b>CPT40.H80.CPT40</b>	80	40	CPT40
<b>CPT50.H80.CPT50</b>	80	50	CPT50
<b>CPT50.H100.CPT50</b>	100	50	CPT50
<b>CPT63.H100.CPT63</b>	100	63	CPT63
<b>CPT63.H140.CPT63</b>	140	63	CPT63
<b>CPT80.H100.CPT80</b>	100	80	CPT80
<b>CPT80.H150.CPT80</b>	150	80	CPT80

**RIDUZIONI**  
*REDUCTIONS*

Articolo	H	A	CPT
<b>CPT40.H70.CPT32</b>	70	32	CPT32
<b>CPT50.H60.CPT32</b>	60	32	CPT32
<b>CPT50.H65.CPT40</b>	65	40	CPT40
<b>CPT63.H80.CPT40</b>	80	40	CPT40
<b>CPT63.H80.CPT50</b>	80	50	CPT50
<b>CPT80.H70.CPT40</b>	70	50	CPT40
<b>CPT80.H80.CPT50</b>	80	63	CPT50
<b>CPT80.H80.CPT63</b>	80	63	CPT63



**MANDRINI CON STELO LAVORABILE***BLANK ARBORS*

Articolo	D	H	L
<b>CPT40.H120.D40BL</b>	40	120	100
<b>CPT40.H200.D75BL</b>	75	200	180

Articolo	D	H	L
<b>CPT50.H150.D50BL</b>	50	150	130
<b>CPT50.H175.D75BL</b>	75	175	155
<b>CPT50.H150.D95BL</b>	95	150	130

Articolo	D	H	L
<b>CPT63.H180.D63BL</b>	63	180	158
<b>CPT63.H195.D75BL</b>	75	195	173
<b>CPT63.H300.D100BL</b>	100	300	178
<b>CPT63.H120.D110BL</b>	110	120	98
<b>CPT63.H180.D120BL</b>	120	180	158
<b>CPT63.H95.D130BL</b>	130	95	73

