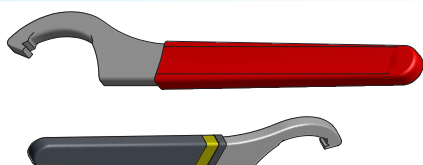




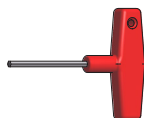
CHIAVI

WRENCHES



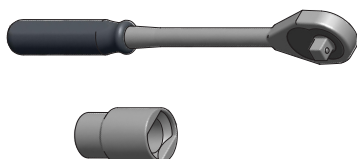
**CHIAVI A SETTORE**  
*HOOK WRENCHES*

PAG. 289



**CHIAVI ESAGONALI**  
*HEXAGONAL WRENCHES*

PAG. 289



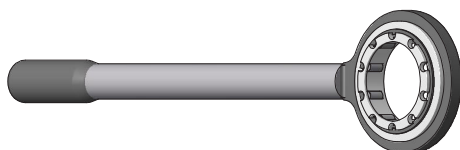
**CRICCHETTO E BUSSOLE DI SERRAGGIO DEI TIRANTI**  
*QUICK RATCHET AND SOCKETS FOR PULL STUDS*

PAG. 289



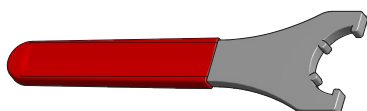
**CHIAVI DINAMOMETRICHE PER GHIERE CHIUDIPINZA ER**  
*TORQUE WRENCHES FOR ER CLAMPING NUTS*

PAG. 290



**CHIAVI DINAMOMETRICHE A RULLI**  
*TORQUE WRENCHES WITH ROLLERS*

PAG. 291



**CHIAVI PER GHIERE CHIUDIPINZA ER**  
*WRENCHES FOR ER CLAMPING NUTS*

PAG. 292



**CHIAVI A RULLI**  
*WRENCHES WITH ROLLERS*

PAG. 293



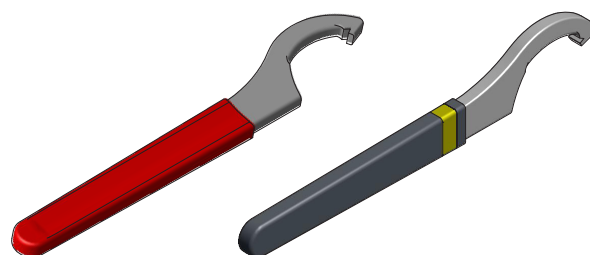


CH

DC

**CHIAVI A SETTORE PER MANDRINI PORTAPUNTA AUTOSERRANTI***HOOK WRENCHES FOR DRILL CHUCKS*

Articolo	PER MANDRINI FOR CHUCKS
<b>CH.DC8</b>	DC8 DCK8
<b>CH.DC10</b>	DC10 DCK10
<b>CH.DC13</b>	DC13 DCK13
<b>CH.DC16</b>	DC16 DCK16



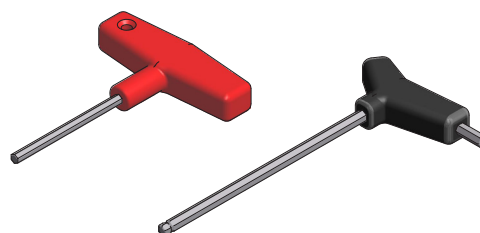
Articolo	A	Ghiere del catalogo / Catalogue nuts	PER MANDRINI A FORTE SERRAGGIO FOR POWER MILLING CHUCKS
<b>CHO16/20</b>	45-50	G16OCC- G20OCC- G16OCS	FS20
<b>CHO25</b>	58-62-65	G25OCC- G25OCS- G25OCLL	-
<b>CHO32</b>	68-70-75	G32OCC- G32OCS	FS32
<b>CHO40</b>	80-85-90	G60C	-

CH

EX

**CHIAVI ESAGONALI PER MANDRINI PORTAPUNTA AUTOSERRANTI  
E PER MANDRINI IDRAULICI***HEXAGONAL WRENCHES FOR DRILL CHUCKS AND FOR HYDRAULIC CHUCKS*

Articolo	EX	PER MANDRINI FOR CHUCKS	PER MANDRINI FOR CHUCKS
<b>CH.EX4</b>	4	CP8	-
<b>CH.EX5</b>	5	-	HY6 ÷ HY20
<b>CH.EX6</b>	6	CP13- CP16	HY25- HY32



CH

SKT

**CRICCHETTO E BUSSOLE PER IL SERRAGGIO DEI TIRANTI***QUICK RATCHET AND SOCKETS FOR PULL STUD CLAMPING*

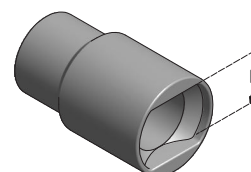
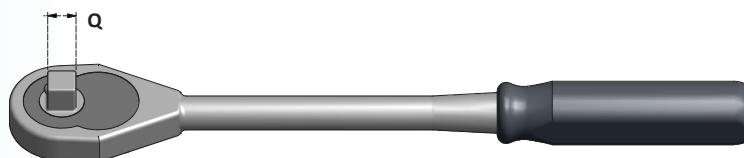
Articolo	Q
<b>CH.SKT</b>	1/2"

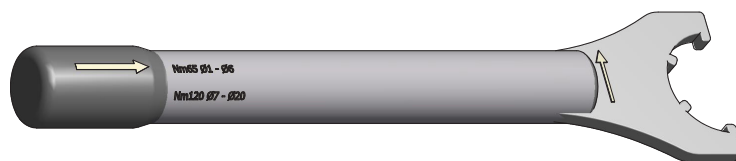
Articolo	PER I TIRANTI FOR PULL STUDS	E
<b>SKT.DIN40</b>	DIN40	19
<b>SKT.DIN50</b>	DIN50	30

Articolo	PER I TIRANTI FOR PULL STUDS	E
<b>SKT.CAT40</b>	CAT40	18
<b>SKT.CAT50</b>	CAT50	30

Articolo	PER I TIRANTI FOR PULL STUDS	E
<b>SKT.BT40</b>	BT40	19
<b>SKT.BT50</b>	BT50	30

Articolo	PER I TIRANTI FOR PULL STUDS	E
<b>SKT.JS40</b>	JS40	19
<b>SKT.JS50</b>	JS50	30

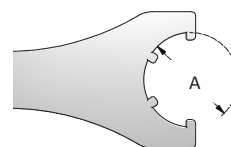


**CHIAVI DINAMOMETRICHE PER GHIERE CHIUDIPINZA**  
*TORQUE WRENCHES FOR CLAMPING NUTS***CHIAVI PER GHIERE MINI CON TACCHE***WRENCHES FOR MINI NUTS WITH SLOTS*

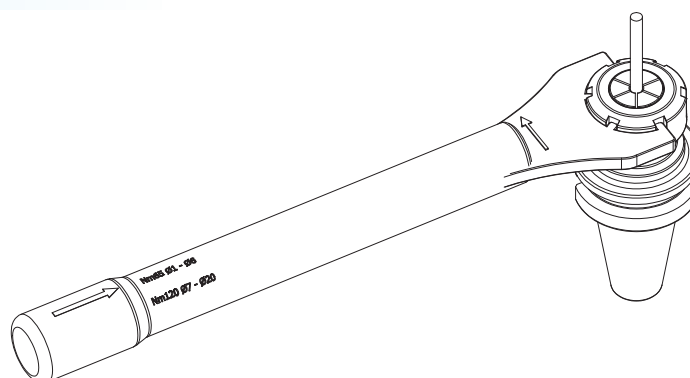
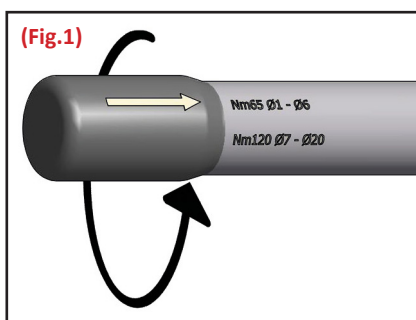
Articolo	Nm	A	Ghiere del catalogo / Catalogue nuts
CD8M	8	-	12 G8M
CD11M	18	-	16 G11M
CD16M	28	-	G16M- G16WDM- G16HTM
CD20M	35	-	G20M- G20WDM- G20HTM
CD25M	30	-	G25M- G25WDM- G25HTM

**CHIAVI PER GHIERE STANDARD CON TACCHE***WRENCHES FOR STANDARD NUTS WITH SLOTS*

Articolo	Nm	A	Ghiere del catalogo / Catalogue nuts
CD16S	30	50	32 G16S- G16WD- G16C
CD20S	40	75	35 G20S- G20WD- G20C
CD25S	55	90	42 G25S- G25WD- G25C- G25HT
CD32S	70	130	50 G32S- G32WD- G32C- G32HT- G32CLS- G32THS
CD40S	120	200	63 G40S- G40WD- G40C- G40HT

**CHIAVI A FORCHETTA PER GHIERE STANDARD ESAGONALI (CON PIANI)***WRENCHES WITH OPEN-END FOR HEXAGON NUTS (WITH FLATS)*

Articolo	Nm	E	Ghiere del catalogo / Catalogue nuts
CD.E14	18	-	14 G11MSE
CD.E17	20	-	17 G11SE
CD.E22	28	-	22 G16MSE- G20A.EX
CD.E25	30	50	25 G16SE- G16WDE- G16HTE
CD.E30	40	75	30 G20SE- G20WDE- G20HTE



Le chiavi dinamometriche sono tarate per segnalare tramite uno scatto meccanico il momento torcente indicato.

*Torque wrenches are calibrated to signal the indicated torque by a mechanical click.*

Nelle chiavi con due momenti dello scatto, scegliere il momento torcente in base al diametro della pinza da stringere.

Per impostarlo ruotare il pomello sul manico. **(Fig.1)**

*When using wrenches with 2 torques, choose the correct one in relation to collet's diameter. **(Fig.1)***

Serrare nella direzione indicata dalla freccia, con utensile montato, fino a sentire lo scatto meccanico.

*Close in strokes direction, with mounted tool, till you hear the click.*

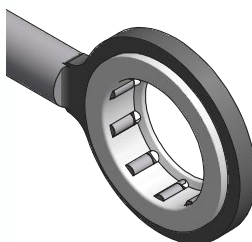


**CHIAVI DINAMOMETRICHE PER GHIERE CHIUDIPINZA SENZA TACCHE**  
*TORQUE WRENCHES FOR CLAMPING NUTS WITHOUT SLOTS***PER GHIERE MINI SENZA TACCHE***FOR NOTCH-FREE MINI NUTS*

Articolo	Nm	A	Ghiere del catalogo / Catalogue nuts
<b>CD8NFM</b>	8	-	12 G8NFM
<b>CD11NFM</b>	18	-	16 G11NFM
<b>CD16NFM</b>	30	-	22 G16NFM
<b>CD20NFM</b>	35	-	28 G20NFM
<b>CD25NFM</b>	40	-	35 G25NFM

**PER GHIERE STANDARD SENZA TACCHE***FOR NOTCH-FREE STANDARD NUTS*

Articolo	Nm	A	Ghiere del catalogo / Catalogue nuts
<b>CD16NF</b>	30	50	32 G16NF
<b>CD20NF</b>	40	70	35 G20NF
<b>CD25NF</b>	55	90	42 G25NF
<b>CD32NF</b>	70	130	50 G32NF
<b>CD40NF</b>	120	200	63 G40NF





## CHIAVI PER GHIERE CHIUDIPINZA

### WRENCHES FOR CLAMPING NUTS

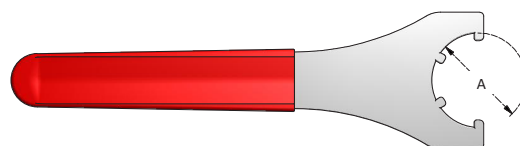
#### CHIAVI PER GHIERE CON TACCHE

##### WRENCHES FOR NUTS WITH SLOTS

Articolo	A	Ghiere del catalogo / Catalogue nuts
<b>CH8M</b>	12	G8M
<b>CH11M</b>	16	G11M
<b>CH16M</b>	22	G16M- G16WDM- G16HTM
<b>CH20M</b>	28	G20M- G20WDM- G20HTM
<b>CH25M</b>	35	G25M- G25WDM- G25HTM



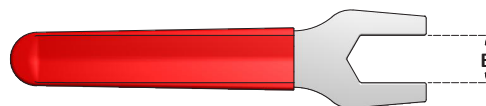
Articolo	A	Ghiere del catalogo / Catalogue nuts
<b>CH16S</b>	32	G16S- G16WD- G16C
<b>CH20S</b>	35	G20S- G20WD- G20C
<b>CH25S</b>	42	G25S- G25WD- G25C- G25HT
<b>CH32S</b>	50	G32S- G32WD- G32C- G32HT- G32CLS- G32THS
<b>CH40S</b>	63	G40S- G40WD- G40C- G40HT
<b>CH50S</b>	78	G50S



#### CHIAVI A FORCHETTA PER GHIERE ESAGONALI (CON PIANI)

##### WRENCHES WITH OPEN-END FOR HEXAGON NUTS (WITH FLATS)

Articolo	E	Ghiere del catalogo / Catalogue nuts
<b>CH.E14</b>	14	G11MSE
<b>CH.E15</b>	15	G11A.EX
<b>CH.E17</b>	17	G11E
<b>CH.E19</b>	19	G16A.EX
<b>CH.E22</b>	22	G16MSE- G20A.EX
<b>CH.E25</b>	25	G16SE - G16HTE
<b>CH.E27</b>	27	G20MSE- G25A.EX
<b>CH.E28</b>	28	
<b>CH.E30</b>	30	G20SE- G20HTE
<b>CH.E32</b>	32	G32A.EX
<b>CH.E34</b>	34	G25MSE
<b>CH.E36</b>	36	
<b>CH.E38</b>	38	G25SE
<b>CH.E42</b>	42	G42A.EX
<b>CH.E50</b>	50	



#### CHIAVI CON PERNI PER GHIERE "A" CON FORI

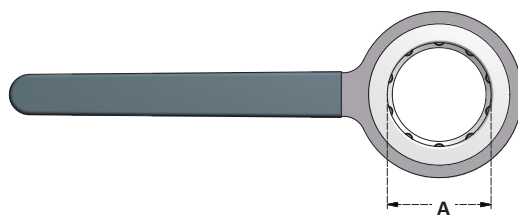
##### PIN-WRENCHES FOR "A" NUTS WITH HOLES

Articolo	I	Ghiere del catalogo / Catalogue nuts
<b>CH11A</b>	13,35	G11A
<b>CH16A</b>	17,5	G16A
<b>CH20A</b>	20,6	G20A
<b>CH25A</b>	23,75	G25A
<b>CH32A</b>	31	G32A





**CHIAVI A RULLI PER GHIERE CHIUDIPINZA SENZA TACCHE**  
*WRENCHES WITH ROLLERS FOR NOTCH FREE CLAMPING NUTS*



**PER GHIERE ER MINI SENZA TACCHE**  
*FOR ER NOTCH-FREE MINI NUTS*

Articolo	A	Ghiere del catalogo / Catalogue nuts
<b>CR8M</b>	12	G8NFM
<b>CR11M</b>	16	G1NFM
<b>CR16M</b>	22	G16NFM
<b>CR20M</b>	28	G20NFM
<b>CR25M-20</b>	35	G25NFM / G20NF

**PER GHIERE ER STANDARD SENZA TACCHE**  
*FOR ER NOTCH-FREE STANDARD NUTS*

Articolo	A	Ghiere del catalogo / Catalogue nuts
<b>CR16</b>	32	G16NF
<b>CR25M-20</b>	35	G25NFM / G20NF
<b>CR25</b>	42	G25NF
<b>CR32</b>	50	G32NF
<b>CR40</b>	63	G40NF

