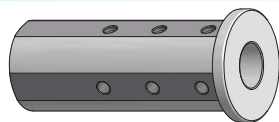




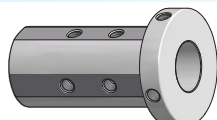
BUSSOLE DI RIDUZIONE CON BATTUTA
HEADED REDUCTION BUSHES

PAG. 295



BUSSOLE DI RIDUZIONE CON BATTUTA - PROLUNGATE
HEADED REDUCTION BUSHES - EXTENDED

PAG. 296



BUSSOLE DI RIDUZIONE TIPO MAZAK
HEADED REDUCTION BUSHES MAZAK TYPE

PAG. 296



BUSSOLE DI RIDUZIONE SENZA BATTUTA
UNIVERSAL REDUCTION BUSHES

PAG. 296



BUSSOLE PORTABARENI PROLUNGATE
BORING BAR SLEEVES

PAG. 297



RIDUZIONI CILINDRICHE A CONO MORSE
MORSE TAPER REDUCTION BUSHES

PAG. 297

- RETTIFICATI SUL GAMBO CON TOLLERANZA g7
- IL FORO È RETTIFICATO CON TOLLERANZA H7

- SHANK GRINDED WITH TOLLERANCE g7
- BORE IS GRINDED WITH TOLLERANCE H7



**BUSSOLE DI RIDUZIONE CON BATTUTA***HEADED REDUCTION BUSHES*

Articolo	D1	D2	L	L1	M	A	Fig
E2-1.20-6	20	6	55	30	M5	-	1
E2-1.20-8	20	8	55	30	M5	-	1
E2-1.20-10	20	10	55	35	M5	-	1
E2-1.20-12	20	12	55	40	M6	-	1
E2-1.20-14	20	14	55	55	-	8	3
E2-1.20-16	20	16	55	55	-	8	3

Articolo	D1	D2	L	L1	M	A	Fig
E2-1.25-6	25	6	65	30	M5	-	1
E2-1.25-8	25	8	65	30	M5	-	1
E2-1.25-10	25	10	65	35	M5	-	1
E2-1.25-12	25	12	65	40	M8	-	1
E2-1.25-14	25	14	65	65	-	10	3
E2-1.25-16	25	16	65	65	-	10	3
E2-1.25-18	25	18	65	65	-	10	3
E2-1.25-20	25	20	65	65	-	10	3

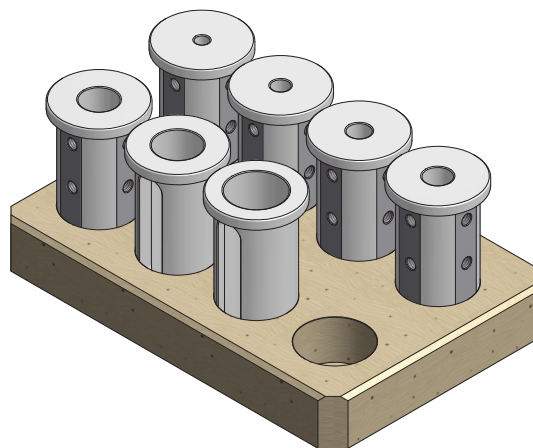
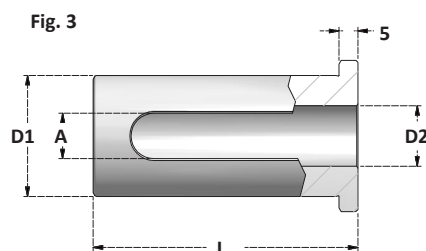
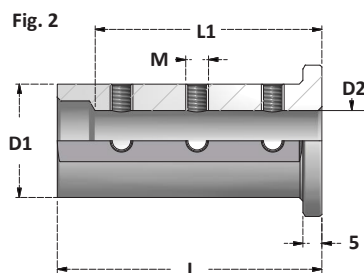
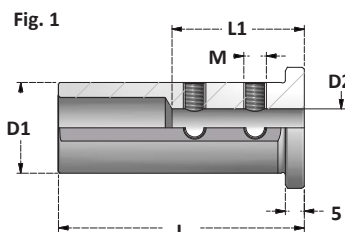
Articolo	D1	D2	L	L1	M	A	Fig
E2-1.32-6	32	6	70	30	M5	-	1
E2-1.32-8	32	8	70	30	M5	-	1
E2-1.32-10	32	10	70	35	M5	-	1
E2-1.32-12	32	12	70	40	M8	-	1
E2-1.32-14	32	14	70	40	M8	-	2
E2-1.32-16	32	16	70	60	M8	-	2
E2-1.32-18	32	18	70	60	M8	-	2
E2-1.32-20	32	20	70	60	-	12	3
E2-1.32-25	32	25	70	70	-	12	3

Articolo	D1	D2	L	L1	M	A	Fig
E2-1.40-6	40	6	80	30	M5	-	1
E2-1.40-8	40	8	80	30	M5	-	1
E2-1.40-10	40	10	80	35	M5	-	1
E2-1.40-12	40	12	80	40	M8	-	1
E2-1.40-14	40	14	80	40	M8	-	2
E2-1.40-16	40	16	80	60	M8	-	2
E2-1.40-18	40	18	80	60	M8	-	2
E2-1.40-20	40	20	80	60	M8	-	2
E2-1.40-25	40	25	80	70	M8	-	2
E2-1.40-32	40	32	80	80	-	12	3

Articolo	D1	D2	L	L1	M	A	Fig
E2-1.50-16	50	16	90	60	M8	-	2
E2-1.50-20	50	20	90	60	M8	-	2
E2-1.50-25	50	25	90	70	M8	-	2
E2-1.50-32	50	32	90	80	M8	-	2
E2-1.50-40	50	40	90	90	-	13	3

SERIE DI BUSSOLE SU BASE DI LEGNO*REDUCTION BUSHES SETS IN WOODEN TRAY*

Articolo	D
TY.E2-1.20-5	6-8-10-12-16
TY.E2-1.25-6	6-8-10-12-16-20
TY.E2-1.32-7	6-8-10-12-16-20-25
TY.E2-1.40-8	6-8-10-12-16-20-25-32

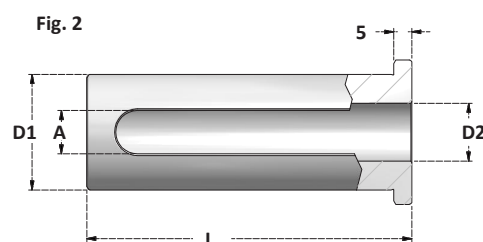
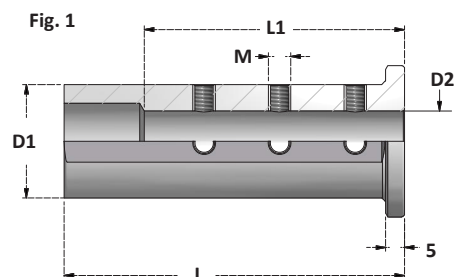


**BUSSOLE DI RIDUZIONE CON BATTUTA - PROLUNGATE***HEADED REDUCTION BUSHES - EXTENDED*

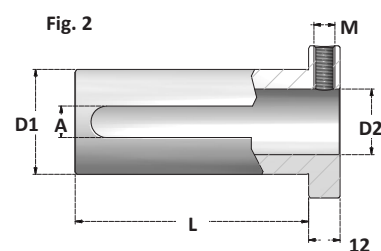
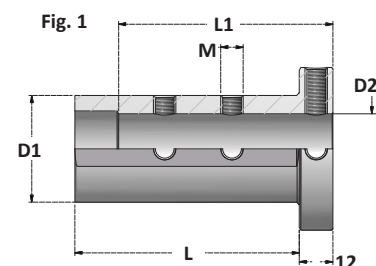
Articolo	D1	D2	L	L1	M	A	Fig
BSH32-6	32	6	90	30	M5	-	1
BSH32-8	32	8	90	30	M5	-	1
BSH32-10	32	10	90	35	M5	-	1
BSH32-12	32	12	90	40	M8	-	1
BSH32-16	32	16	90	60	M8	-	1
BSH32-20	32	20	90	60	-	10	2
BSH32-25	32	25	90	70	-	10	2

Articolo	D1	D2	L	L1	M	A	Fig
BSH40-6	40	6	110	30	M5	-	1
BSH40-8	40	8	110	30	M5	-	1
BSH40-10	40	10	110	35	M5	-	1
BSH40-12	40	12	110	40	M8	-	1
BSH40-16	40	16	110	60	M8	-	1
BSH40-20	40	20	110	60	M8	-	1
BSH40-25	40	25	110	70	M8	-	1
BSH40-32	40	32	110	110	-	10	2

Articolo	D1	D2	L	L1	M	A	Fig
BSH50-16	50	16	130	60	M8	-	1
BSH50-20	50	20	130	60	M8	-	1
BSH50-25	50	25	130	70	M8	-	1
BSH50-32	50	32	130	80	M8	-	1
BSH50-40	50	40	130	90	-	12	2

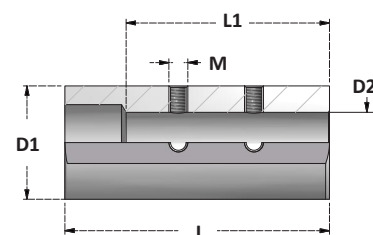
**BUSSOLE DI RIDUZIONE CON BATTUTA - TIPO MAZAK***HEADED REDUCTION BUSHES - MAZAK TYPE*

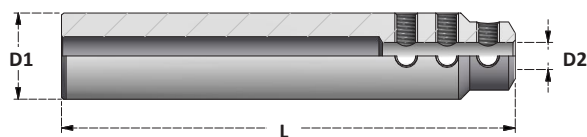
Articolo	D1	D2	L	L1	M	A	Fig
BSH40MZ-6	40	6	80	40	M5	-	1
BSH40MZ-8	40	8	80	45	M5	-	1
BSH40MZ-10	40	10	80	50	M5	-	1
BSH40MZ-12	40	12	80	56	M8	-	1
BSH40MZ-14	40	14	80	56	M8	-	1
BSH40MZ-16	40	16	80	60	M8	-	1
BSH40MZ-18	40	18	80	60	M8	-	1
BSH40MZ-20	40	20	80	60	M8	-	1
BSH40MZ-25	40	25	80	60	M8	-	1
BSH40MZ-32	40	32	89	89	M8	12	2

**BUSSOLE DI RIDUZIONE SENZA BATTUTA***UNIVERSAL REDUCTION BUSHES*

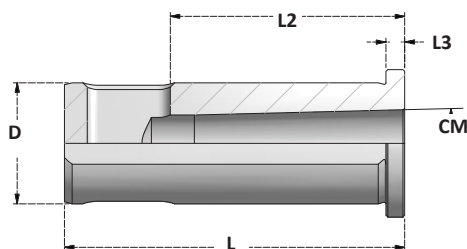
Articolo	D1	D2	L	L1	M
E2SB32-8	32	8	70	30	M5
E2SB32-10	32	10	70	35	M5
E2SB32-12	32	12	70	40	M8
E2SB32-16	32	16	70	60	M8
E2SB32-20	32	20	70	60	M8

Articolo	D1	D2	L	L1	M
E2SB40-8	40	8	80	30	M5
E2SB40-10	40	10	80	35	M5
E2SB40-12	40	12	80	40	M8
E2SB40-16	40	16	80	60	M8
E2SB40-20	40	20	80	60	M8
E2SB40-25	40	25	80	70	M8



**BUSSOLE PORTABARENI PROLUNGATE***BORING BAR SLEEVES*

Articolo	D1	D2	L
BSCL16-4	16	4	100
BSCL16-5	16	5	100
BSCL16-6	16	6	100
BSCL16-7	16	7	100
BSCL20-4	20	4	100
BSCL20-5	20	5	100
BSCL20-6	20	6	100
BSCL20-7	20	7	100
BSCL20-8	20	8	100

BUSSOLE DI RIDUZIONE A CONO MORSE CON BATTUTA*MORSE TAPER REDUCTION BUSHES - DRILL SOCKETS*

Articolo	D	L	L2	CM	L3	Fig
D20.L65.CM1	20	65	52	CM1	5	1
D20.L80.CM2	20	80	62	CM2	29	2
D25.L65.CM1	25	65	52	CM1	5	1
D25.L75.CM2	25	75	62	CM2	5	1
D25.L100.CM3	25	100	78	CM3	55	2
D32.L90.CM1	32	90	52	CM1	5	1
D32.L90.CM2	32	90	62	CM2	5	1
D32.L100.CM3	32	100	78	CM3	5	1
D40.L90.CM1	40	90	52	CM1	5	1
D40.L110.CM2	40	110	62	CM2	5	1
D40.L110.CM3	40	110	78	CM3	5	1
D40.L135.CM4	40	135	98	CM4	5	1

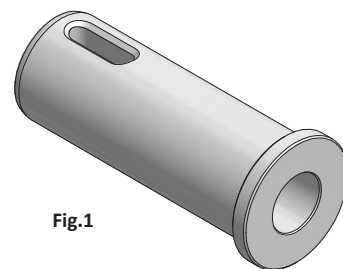


Fig.1

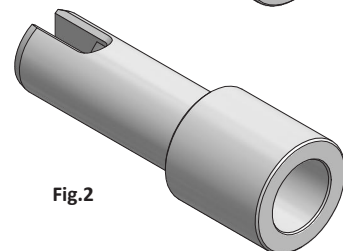


Fig.2

