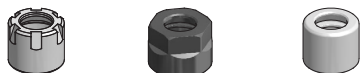
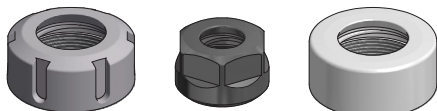


ISO DIN 15488 / DIN6499



GHIERE ER CON FILETTATURA MINI
ER NUTS WITH MINI THREAD

PAG. 340



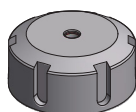
GHIERE ER CON FILETTATURA STANDARD
ER NUTS WITH STANDARD THREAD

PAG. 341



GHIERE ER A TENUTA CON DISCHETTI
ER NUTS SEALED WITH DISKS

PAG. 343



GHIERE ER A TENUTA INTEGRALI
SEALED ER NUTS

PAG. 245



GHIERE ER A TENUTA CON CANALI
SEALED ER NUTS WITH CHANNELS

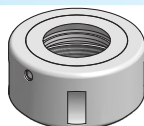
PAG. 345



GHIERE ER CON FILETTATURA ESTERNA
EXTERNALLY THREADED ER NUTS

PAG. 346

ISO DIN 10897 / DIN6388



GHIERE PER PINZE EOC
EOC NUTS

PAG. 347

SKS / ETS



GHIERE PER PINZE SKS ED ETS
SKS AND ETS NUTS

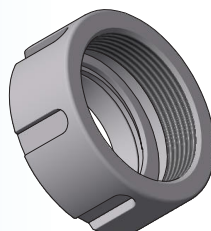
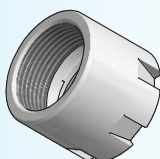
PAG. 348

La filettatura delle ghiere può essere destra o sinistra.

Nuts can be with right or left thread.

Filettatura mini destra
Mini right thread

Filettatura mini sinistra
Mini left thread

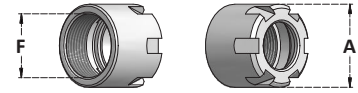


Filettatura standard destra
Standard right thread

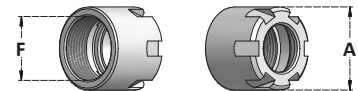
Filettatura standard sinistra
Standard left thread

GHIERE CHIUDIPINZA ER CON FILETTATURA MINI DESTRA
ER CLAMPING NUTS WITH MINI RIGHT THREAD
GHIERE ER MINI - ESTRAZIONE ECCENTRICA - TACCHE PER IL SERRAGGIO
MINI ER NUTS - ECCENTRIC EXTRACTOR - CLAMPING WITH SLOTS

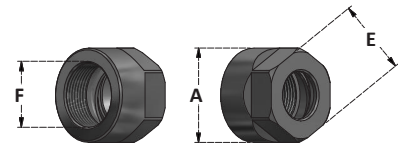
Articolo	A	F	Nm	CH1	CH2
G8M	12	M10x0,75	5÷6	CH8M	CD8M
G11M	16	M13x0,75	7÷17	CH11M	CD11M
G16M	22	M19x1	12÷24	CH16M	CD16M
G20M	28	M24x1	16÷28	CH20M	CD20M
G25M	35	M30x1	22÷32	CH25M	CD25M


GHIERE ER MINI CONCENTRICHE - ESTRAZIONE CONCENTRICA - TACCHE PER IL SERRAGGIO
MINI CONCENTRIC ER NUTS - CONCENTRIC EXTRACTOR - CLAMPING WITH SLOTS

Articolo	A	F	Nm	CH1	CH2
G16WDM	22	M19x1	12÷24	CH16M	CD16M
G20WDM	28	M24x1	16÷28	CH20M	CD20M
G25WDM	35	M30x1	22÷32	CH25M	CD25M


 Solo per pinze STANDARD e HP- *Only for STANDARD and HP collets*
GHIERE ER MINI ESAGONALI - ESTRAZIONE ECCENTRICA - PIANI PER IL SERRAGGIO
MINI HEXAGONAL ER NUTS - ECCENTRIC EXTRACTOR - FLATS FOR CLAMPING

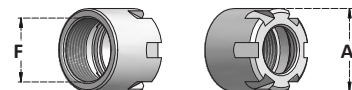
Articolo	A	E	F	Nm	CH1	CH2
G11MSE	16	14	M13x0,75	7÷17	CH.E14	CD.E14
G16MSE	25	22	M19x1	12÷24	CH.E22	CD.E22
G20MSE	30	27	M24x1	16÷28	CH.E27	CD.E27
G25MSE	37	34	M30x1	22÷32	CH.E34	CD.E34


GHIERE ER MINI SENZA TACCHE - ESTRAZIONE ECCENTRICA - SERRAGGIO SENZA TACCHE
MINI NOTCH-FREE ER NUTS - ECCENTRIC EXTRACTOR - NOTCH-FREE CLAMPING

Articolo	A	F	Nm	CH1	CH2
G8NFM	12	M10x0,75	5÷6	CR8M	CD8NFM
G11NFM	16	M13x0,75	7÷17	CR11M	CD11NFM
G16NFM	22	M19x1	12÷24	CR16M	CD16NFM
G20NFM	28	M24x1	16÷28	CR20M	CD20NFM
G25NFM	35	M30x1	22÷32	CR25M	CD25NFM


 Per alte velocità - *For high speeds*
GHIERE CHIUDIPINZA ER CON FILETTATURA MINI SINISTRA
ER CLAMPING NUTS WITH MINI LEFT THREAD
GHIERE ER MINI SINISTRE - ESTRAZIONE ECCENTRICA - TACCHE PER IL SERRAGGIO
MINI LEFT ER NUTS - ECCENTRIC EXTRACTOR - CLAMPING WITH SLOTS

Articolo	A	F	Nm	CH1	CH2
G11ML	16	M13x0,75 sin	7÷17	CH11M	CD11M
G16ML	22	M19x1 sin	12÷24	CH16M	CD16M
G20ML	28	M24x1 sin	16÷28	CH20M	CD20M
G25ML	35	M30x1 sin	22÷32	CH25M	CD25M


 Nm: Forza di serraggio consigliata - *Recommended tightening torque*

 CH1: Chiave standard consigliata - *Recommended standard wrench*

 CH2: Chiave dinamometrica consigliata - *Recommended torque wrench*

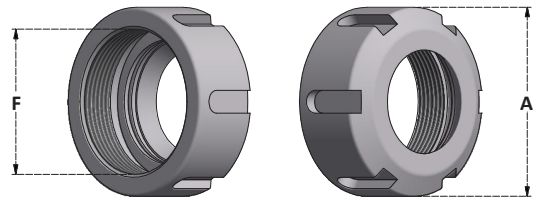

GHIERE CHIUDIPINZA ER CON FILETTATURA STANDARD DESTRA

ER CLAMPING NUTS WITH STANDARD RIGHT THREAD

GHIERE ER STANDARD - ESTRAZIONE ECCENTRICA - TACCHE PER IL SERRAGGIO

STANDARD ER NUTS - ECCENTRIC EXTRACTOR - CLAMPING WITH SLOTS

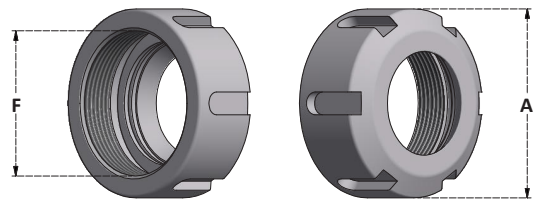
Articolo	A	F	Nm	CH1	CH2
G16S	32	M22x1,5	15÷50	CH16S	CD16S
G20S	35	M25x1,5	16÷75	CH20S	CD20S
G25S	42	M32x1,5	25÷100	CH25S	CD25S
G32S	50	M40x1,5	25÷140	CH32S	CD32S
G40S	63	M50x1,5	60÷170	CH40S	CD40S
G50S	78	M64x2	120÷250	CH50S	/



GHIERE ER CONCENTRICHE - ESTRAZIONE CONCENTRICA - TACCHE PER IL SERRAGGIO

CONCENTRIC ER NUTS - CONCENTRIC EXTRACTOR - CLAMPING WITH SLOTS

Articolo	A	F	Nm	CH1	CH2
G16WD	32	M22x1,5	15÷50	CH16S	CD16S
G20WD	35	M25x1,5	16÷75	CH20S	CD20S
G25WD	42	M32x1,5	25÷100	CH25S	CD25S
G32WD	50	M40x1,5	25÷140	CH32S	CD32S
G40WD	63	M50x1,5	60÷170	CH40S	CD40S

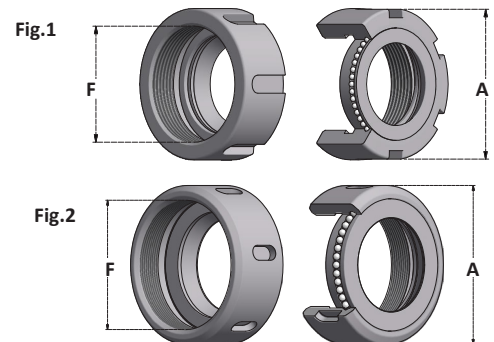


Solo per pinze STANDARD e HP - Only for STANDARD and HP collets

GHIERE ER A SFERE - ESTRAZIONE ECCENTRICA - TACCHE PER IL SERRAGGIO

FRICTION BEARING ER NUTS - ECCENTRIC EXTRACTOR - CLAMPING WITH SLOTS

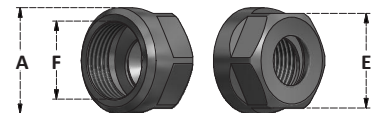
Articolo	A	F	Nm	CH1	CH2	Fig
G16C	32	M22x1,5	16÷55	CH16S	CD16S	1
G20C	35	M25x1,5	16÷80	CH20S	CD20S	1
G25C	42	M32x1,5	20÷110	CH25S	CD25S	1
G32C	50	M40x1,5	20÷140	CH32S	CD32S	1
G40C	63	M50x1,5	40÷180	CH40S	CD40S	1
G50C	78	M64x2	50÷200	CH50S	/	1
G60C	83	M70x1,5	60÷240	CHO40	/	2



GHIERE ER ESAGONALI - ESTRAZIONE ECCENTRICA - PIANI PER IL SERRAGGIO

HEXAGONAL ER NUTS - ECCENTRIC EXTRACTOR - FLATS FOR CLAMPING

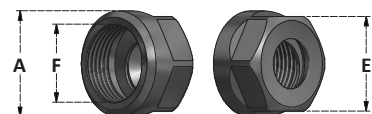
Articolo	A	E	F	Nm	CH1	CH2
G11SE	19	17	M14x0,75	8÷24	CH.E17	CD.E17
G16SE	28	25	M22x1,5	15÷50	CH.E25	CD.E25
G20SE	34	30	M25x1,5	16÷75	CH.E30	CD.E30
G25SE	42	38	M32x1,5	25÷100	CH.E38	/



GHIERE ER ESAGONALI CONCENTRICHE - ESTRAZIONE CONCENTRICA - PIANI PER IL SERRAGGIO

HEXAGONAL ER CONCENTRIC NUTS - CONCENTRIC EXTRACTOR - FLATS FOR CLAMPING

Articolo	A	E	F	Nm	CH1	CH2
G16WDE	28	25	M22x1,5	15÷50	CH.E25	CD.E25
G20WDE	34	30	M25x1,5	16÷75	CH.E30	CD.E30



Solo per pinze STANDARD e HP - Only for STANDARD and HP collets

Nm: Forza di serraggio consigliata - Recommended tightening torque

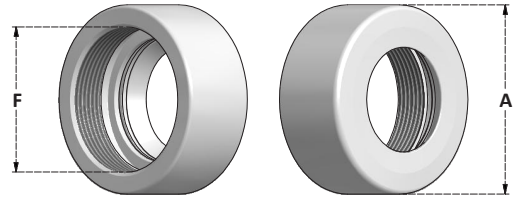
CH1: Chiave standard consigliata - Recommended standard wrench

CH2: Chiave dinamometrica consigliata - Recommended torque wrench

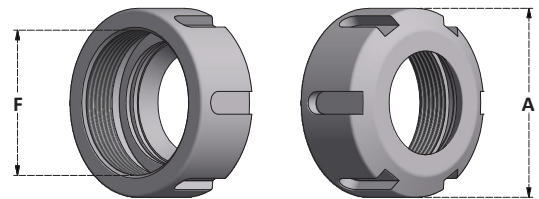


GHIERE CHIUDIPINZA ER CON FILETTATURA STANDARD
ER CLAMPING NUTS WITH STANDARD THREAD
GHIERE ER SENZA TACCHE - ESTRAZIONE ECCENTRICA - SERRAGGIO SENZA TACCHE
NOTCH-FREE ER NUTS - ECCENTRIC EXTRACTOR - NOTCH-FREE CLAMPING

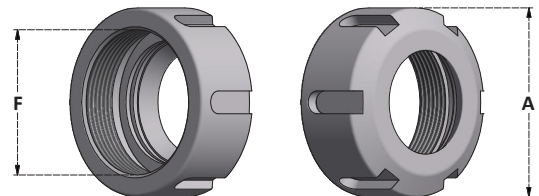
Articolo	A	F	Nm	CH1	CH2
G16NF	32	M22x1,5	15÷50	CR16	CD16NF
G20NF	35	M25x1,5	16÷75	CR20	CD20NF
G25NF	42	M32x1,5	25÷100	CR25	CD25NF
G32NF	50	M40x1,5	25÷140	CR32	CD32NF
G40NF	63	M50x1,5	60÷170	CR40	CD40NF

Per alte velocità - For high speeds

GHIERE CHIUDIPINZA ER CON FILETTATURA SINISTRA
ER CLAMPING NUTS WITH LEFT THREAD
GHIERE ER SINISTRE - ESTRAZIONE ECCENTRICA - TACCHE PER IL SERRAGGIO
LEFT ER NUTS - ECCENTRIC EXTRACTOR - CLAMPING WITH SLOTS

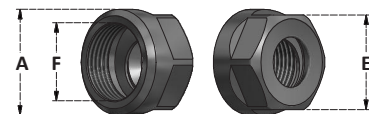
Articolo	A	F	Nm	CH1	CH2
G16SL	32	M22x1,5 sin	15÷50	CH16S	CD16S
G20SL	35	M25x1,5 sin	16÷75	CH20S	CD20S
G25SL	42	M32x1,5 sin	25÷100	CH25S	CD25S
G32SL	50	M40x1,5 sin	25÷140	CH32S	CD32S
G40SL	63	M50x1,5 sin	60÷170	CH40S	CD40S


GHIERE ER SINISTRE CONCENTRICHE - ESTRAZIONE CONCENTRICA - TACCHE PER IL SERRAGGIO
LEFT ER CONCENTRIC NUTS - CONCENTRIC EXTRACTOR - CLAMPING WITH SLOTS

Articolo	A	F	Nm	CH1	CH2
G16WDL	32	M22x1,5 sin	15÷50	CH16S	CD16S
G20WDL	35	M25x1,5 sin	16÷75	CH20S	CD20S
G25WDL	42	M32x1,5 sin	25÷100	CH25S	CD25S
G32WDL	50	M40x1,5 sin	25÷140	CH32S	CD32S
G40WDL	63	M50x1,5 sin	60÷170	CH40S	CD40S

 Solo per pinze STANDARD e HP- *Only for STANDARD and HP collets*

GHIERE ER SINISTRE ESAGONALI - ESTRAZIONE ECCENTRICA - PIANI PER IL SERRAGGIO
LEFT HEXAGONAL ER NUTS - ECCENTRIC EXTRACTOR - FLATS FOR CLAMPING

Articolo	A	E	F	Nm	CH1	CH2
G11SEL	19	17	M14x0,75 sin	8÷24	CH.E17	CD.E17
G16SEL	28	25	M22x1,5 sin	15÷50	CH.E25	CD.E25
G20SEL	34	30	M25x1,5 sin	16÷75	CH.E30	CD.E30


Nm: Forza di serraggio consigliata - Recommended tightening torque
CH1: Chiave standard consigliata - Recommended standard wrench
CH2: Chiave dinamometrica consigliata - Recommended torque wrench

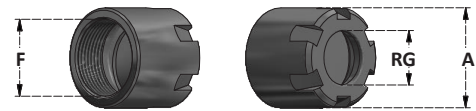

GHIERE CHIUDIPINZA ER PER DISCHETTI A TENUTA DEL REFRIGERANTE

ER CLAMPING NUTS FOR SEALING DISCS

GHIERE MINI ER PER DISCHETTI ESTRAZIONE ECCENTRICA - TACCHE PER IL SERRAGGIO

MINI ER NUTS FOR SEALING DISCS - ECCENTRIC EXTRACTOR - SLOTS FOR CLAMPING

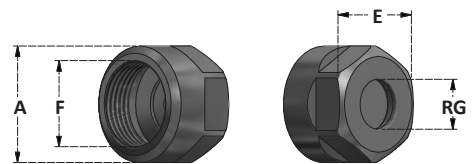
Articolo	A	F	Nm	CH1	CH2
G16HTM	22	M19x1	12÷24	CH16M	CD16M
G20HTM	28	M24x1	16÷28	CH20M	CD20M
G25HTM	35	M30x1	22÷32	CH25M	CD25M



GHIERE ER ESAGONALI PER DISCHETTI - ESTRAZIONE ECCENTRICA - PIANI PER IL SERRAGGIO

HEXAGONAL ER NUTS FOR SEALING DISCS - ECCENTRIC EXTRACTOR - FLATS FOR CLAMPING

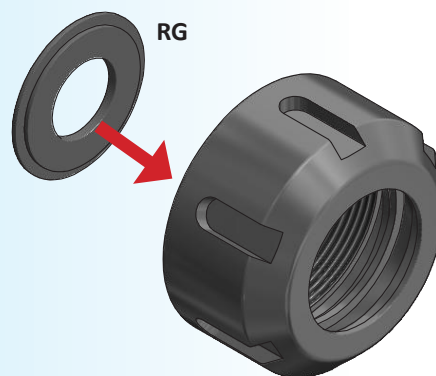
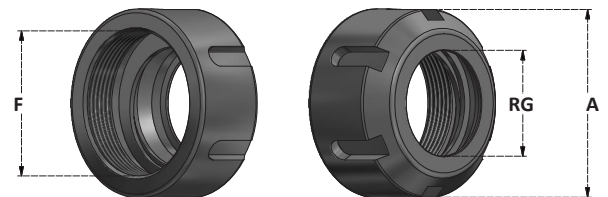
Articolo	A	E	F	Nm	CH1	CH2
G16HTE	28	25	M22x1,5	15÷50	CH.E25	CD.E25
G20HTE	34	30	M25x1,5	16÷75	CH.E30	CD.E30



GHIERE ER STANDARD PER DISCHETTI - ESTRAZIONE ECCENTRICA - TACCHE PER IL SERRAGGIO

STANDARD ER NUTS FOR SEALING DISCS - ECCENTRIC EXTRACTOR - SLOTS FOR CLAMPING

Articolo	A	F	Nm	CH1	CH2
G25HT	42	M32x1,5	25÷100	CH25S	CD25S
G32HT	50	M40x1,5	25÷140	CH32S	CD32S
G40HT	63	M50x1,5	60÷170	CH40S	CD40S

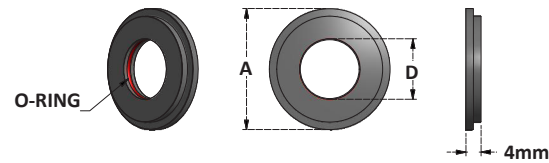


Nm: Forza di serraggio consigliata - Recommended tightening torque
 CH1: Chiave standard consigliata - Recommended standard wrench
 CH2: Chiave dinamometrica consigliata - Recommended torque wrench



DISCHETTI A TENUTA DEL REFRIGERANTE

SEALING DISCS


 Per ghiere G16HTM/E
For G16HTM/E nuts

Articolo	A	D
RG16.D3,5	12,9	3,5
RG16.D4	12,9	4
RG16.D4,5	12,9	4,5
RG16.D5	12,9	5
RG16.D5,5	12,9	5,5
RG16.D6	12,9	6
RG16.D6,5	12,9	6,5
RG16.D7	12,9	7
RG16.D7,5	12,9	7,5
RG16.D8	12,9	8
RG16.D8,5	12,9	8,5
RG16.D9	12,9	9
RG16.D9,5	12,9	9,5
RG16.D10	12,9	10

 Per ghiere G20HTM/E
For G20HTM/E nuts

Articolo	A	D
RG20.D3,5	15,9	3,5
RG20.D4	15,9	4
RG20.D4,5	15,9	4,5
RG20.D5	15,9	5
RG20.D5,5	15,9	5,5
RG20.D6	15,9	6
RG20.D6,5	15,9	6,5
RG20.D7	15,9	7
RG20.D7,5	15,9	7,5
RG20.D8	15,9	8
RG20.D8,5	15,9	8,5
RG20.D9	15,9	9
RG20.D9,5	15,9	9,5
RG20.D10	15,9	10
RG20.D10,5	15,9	10,5
RG20.D11	15,9	11
RG20.D11,5	15,9	11,5
RG20.D12	15,9	12
RG20.D12,5	15,9	12,5
RG20.D13	15,9	13

 Per ghiere G25HT
For G25HT nuts

Articolo	A	D
RG25.D3,5	21	3,5
RG25.D4	21	4
RG25.D4,5	21	4,5
RG25.D5	21	5
RG25.D5,5	21	5,5
RG25.D6	21	6
RG25.D6,5	21	6,5
RG25.D7	21	7
RG25.D7,5	21	7,5
RG25.D8	21	8
RG25.D8,5	21	8,5
RG25.D9	21	9
RG25.D9,5	21	9,5
RG25.D10	21	10
RG25.D10,5	21	10,5
RG25.D11	21	11
RG25.D11,5	21	11,5
RG25.D12	21	12
RG25.D12,5	21	12,5
RG25.D13	21	13
RG25.D13,5	21	13,5
RG25.D14	21	14
RG25.D14,5	21	14,5
RG25.D15	21	15
RG25.D15,5	21	15,5
RG25.D16	21	16

 Per ghiere G32HT
For G32HT nuts

Articolo	A	D
RG32.D3,5	26,95	3,5
RG32.D4	26,95	4
RG32.D4,5	26,95	4,5
RG32.D5	26,95	5
RG32.D5,5	26,95	5,5
RG32.D6	26,95	6
RG32.D6,5	26,95	6,5
RG32.D7	26,95	7
RG32.D7,5	26,95	7,5
RG32.D8	26,95	8
RG32.D8,5	26,95	8,5
RG32.D9	26,95	9
RG32.D9,5	26,95	9,5
RG32.D10	26,95	10
RG32.D10,5	26,95	10,5
RG32.D11	26,95	11
RG32.D11,5	26,95	11,5
RG32.D12	26,95	12
RG32.D12,5	26,95	12,5
RG32.D13	26,95	13
RG32.D13,5	26,95	13,5
RG32.D14	26,95	14
RG32.D14,5	26,95	14,5
RG32.D15	26,95	15
RG32.D15,5	26,95	15,5
RG32.D16	26,95	16
RG32.D16,5	26,95	16,5
RG32.D17	26,95	17
RG32.D17,5	26,95	17,5
RG32.D18	26,95	18
RG32.D18,5	26,95	18,5
RG32.D19	26,95	19
RG32.D19,5	26,95	19,5
RG32.D20	26,95	20

 Per ghiere G40HT
For G40HT nuts

Articolo	A	D
RG40.D4	33,3	4
RG40.D4,5	33,3	4,5
RG40.D5	33,3	5
RG40.D5,5	33,3	5,5
RG40.D6	33,3	6
RG40.D6,5	33,3	6,5
RG40.D7	33,3	7
RG40.D7,5	33,3	7,5
RG40.D8	33,3	8
RG40.D8,5	33,3	8,5
RG40.D9	33,3	9
RG40.D9,5	33,3	9,5
RG40.D10	33,3	10
RG40.D10,5	33,3	10,5
RG40.D11	33,3	11
RG40.D11,5	33,3	11,5
RG40.D12	33,3	12
RG40.D12,5	33,3	12,5
RG40.D13	33,3	13
RG40.D13,5	33,3	13,5
RG40.D14	33,3	14
RG40.D14,5	33,3	14,5
RG40.D15	33,3	15
RG40.D15,5	33,3	15,5
RG40.D16	33,3	16
RG40.D16,5	33,3	16,5
RG40.D17	33,3	17
RG40.D17,5	33,3	17,5
RG40.D18	33,3	18
RG40.D18,5	33,3	18,5
RG40.D19	33,3	19
RG40.D19,5	33,3	19,5
RG40.D20	33,3	20
RG40.D20,5	33,3	20,5
RG40.D21	33,3	21
RG40.D21,5	33,3	21,5
RG40.D22	33,3	22
RG40.D22,5	33,3	22,5
RG40.D23	33,3	23
RG40.D23,5	33,3	23,5
RG40.D24	33,3	24
RG40.D24,5	33,3	24,5
RG40.D25	33,3	25
RG40.D25,5	33,3	25,5
RG40.D26	33,3	26

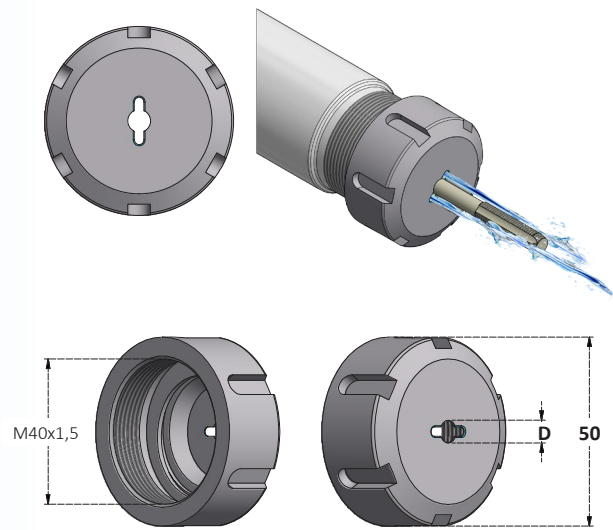
GHIERE CHIUDIPINZA ER CON CANALINI PER IL PASSAGGIO DEL REFRIGERANTE

ESTRAZIONE ECCENTRICA - TACCHE PER IL SERRAGGIO

ER CLAMPING NUTS WITH CHANNELS FOR COOLANT

ECCENTRIC EXTRACTOR - SLOTS FOR CLAMPING

Articolo	Nm	CH1	CH2
G32CLS.D4	25÷140	CH32S	CD32S
G32CLS.D5	25÷140	CH32S	CD32S
G32CLS.D6	25÷140	CH32S	CD32S
G32CLS.D7	25÷140	CH32S	CD32S
G32CLS.D8	25÷140	CH32S	CD32S
G32CLS.D9	25÷140	CH32S	CD32S
G32CLS.D10	25÷140	CH32S	CD32S
G32CLS.D11	25÷140	CH32S	CD32S
G32CLS.D12	25÷140	CH32S	CD32S
G32CLS.D13	25÷140	CH32S	CD32S
G32CLS.D14	25÷140	CH32S	CD32S
G32CLS.D15	25÷140	CH32S	CD32S
G32CLS.D16	25÷140	CH32S	CD32S
G32CLS.D17	25÷140	CH32S	CD32S
G32CLS.D18	25÷140	CH32S	CD32S
G32CLS.D19	25÷140	CH32S	CD32S
G32CLS.D20	25÷140	CH32S	CD32S



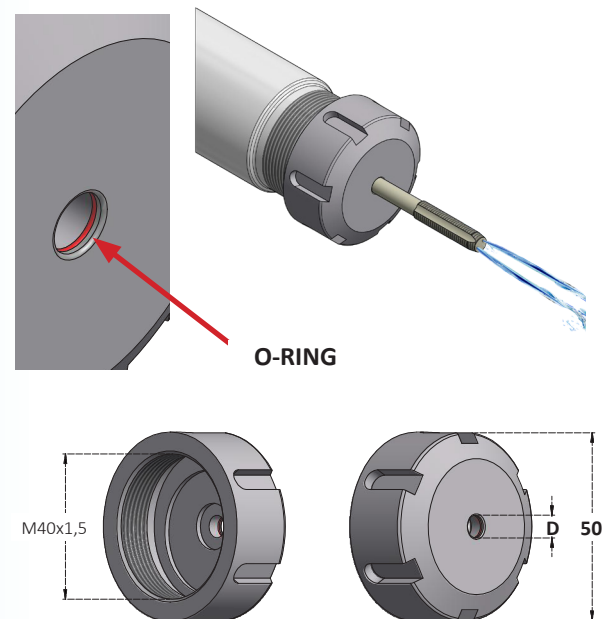
GHIERE CHIUDIPINZA ER A TENUTA DEL REFRIGERANTE

ESTRAZIONE ECCENTRICA - TACCHE PER IL SERRAGGIO

SEALED ER CLAMPING NUTS

ECCENTRIC EXTRACTOR - SLOTS FOR CLAMPING

Articolo	Nm	CH1	CH2
G32THS.D4	25÷140	CH32S	CD32S
G32THS.D5	25÷140	CH32S	CD32S
G32THS.D6	25÷140	CH32S	CD32S
G32THS.D7	25÷140	CH32S	CD32S
G32THS.D8	25÷140	CH32S	CD32S
G32THS.D9	25÷140	CH32S	CD32S
G32THS.D10	25÷140	CH32S	CD32S
G32THS.D11	25÷140	CH32S	CD32S
G32THS.D12	25÷140	CH32S	CD32S
G32THS.D13	25÷140	CH32S	CD32S
G32THS.D14	25÷140	CH32S	CD32S
G32THS.D15	25÷140	CH32S	CD32S
G32THS.D16	25÷140	CH32S	CD32S
G32THS.D17	25÷140	CH32S	CD32S
G32THS.D18	25÷140	CH32S	CD32S
G32THS.D19	25÷140	CH32S	CD32S
G32THS.D20	25÷140	CH32S	CD32S



Nm: Forza di serraggio consigliata - Recommended tightening torque

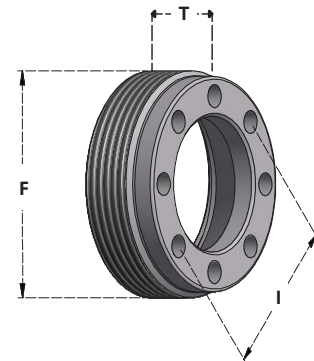
CH1: Chiave standard consigliata - Recommended standard wrench

CH2: Chiave dinamometrica consigliata - Recommended torque wrench

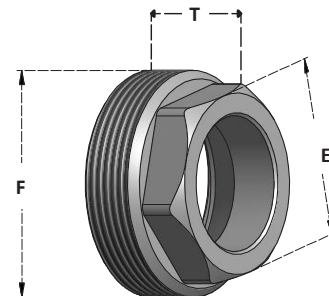


GHIERE ER CON FILETTATURA ESTERNA
EXTERNALLY THREADED ER NUTS
GHIERE ER "TIPO A" - ESTRAZIONE ECCENTRICA - TACCHE PER IL SERRAGGIO
"A TYPE" ER NUTS - ECCENTRIC EXTRACTOR - SLOTS FOR CLAMPING

Articolo	I	F	Chiave Wrench	T
G11A	13,35	M18x1	CH11A	6
G16A	18,1	M24x1	CH16A	8
G20A	20,6	M28x1,5	CH20A	11
G25A	23,75	M32x1,5	CH25A	12
G32A	31	M40x1,5	CH32A	14


GHIERE ER "TIPO A" ESAGONALI - ESTRAZIONE ECCENTRICA - PIANI PER IL SERRAGGIO
HEXAGONAL "A TYPE" ER NUTS - ECCENTRIC EXTRACTOR - FLATS FOR CLAMPING

Articolo	E	F	Chiave Wrench	T
G11A.EX	15	M18x1	CH.E15	9
G16A.EX	19	M24x1	CH.E19	12
G20A.EX	22	M28x1,5	CH.E22	13
G25A.EX	27	M32x1,5	CH.E27	16,5
G32A.EX	32	M40x1,5	CH.E32	19
G40A.EX	42	M50x1,5	CH.E42	17



GHIERE CHIUDIPINZA EOC CON FILETTATURA DESTRA

EOC CLAMPING NUTS WITH RIGHT THREAD

GHIERE EOC STANDARD - A SFERE - ESTRAZIONE CONCENTRICA - TACCHE PER IL SERRAGGIO

EOC STANDARD NUTS - FRICTION BEARING - CONCENTRIC EXTRACTOR - CLAMPING WITH SLOTS

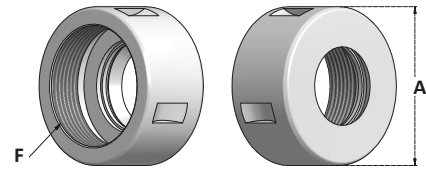
Articolo	A	F	Nm	Chiave Wrench
G160CC	43	M33x1,5	85	CHO16/20
G200CC	50	M42x2	95	CHO16/20
G250CC	60	M48x2	140	CHO25
G320CC	72	M60x2,5	170	CHO32
G400CC	85	M68x2,5	200	CHO40



GHIERE EOC SENZA SFERE - ESTRAZIONE CONCENTRICA - TACCHE PER IL SERRAGGIO

EOC NUTS WITHOUT FRICTION BEARING - CONCENTRIC EXTRACTOR - CLAMPING WITH SLOTS

Articolo	A	F	Nm	Chiave Wrench
G160CS	43	M33x1,5	130	CHO16/20
G200CS	50	M42x2	150	CHO16/20
G250CS	60	M48x2	200	CHO25
G320CS	72	M60x2,5	220	CHO32
G400CS	85	M68x2,5	250	CHO40



GHIERE CHIUDIPINZA EOC CON FILETTATURA SINISTRA

EOC CLAMPING NUTS WITH LEFT THREAD

GHIERE EOC SINISTRE - A SFERE - ESTRAZIONE CONCENTRICA - TACCHE PER IL SERRAGGIO

EOC LEFT NUTS - FRICTION BEARING - CONCENTRIC EXTRACTOR - CLAMPING WITH SLOTS

Articolo	A	F	Nm	Chiave Wrench
G250CCL	60	M48x2 sin	140	CHO25

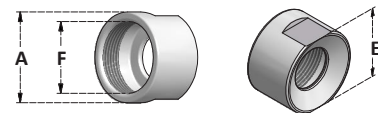


GHIERE CHIUDIPINZA SKS
SKS CLAMPING NUTS
GHIERE SKS - ESTRAZIONE CONCENTRICA - TACCHE PER IL SERRAGGIO
SKS NUTS - CONCENTRIC EXTRACTOR - SLOTS FOR CLAMPING

Articolo	A	F	Nm	CH1
G10SKS	30	M21,5x1	30-55	CH10SKS
G16SKS	40	M32x1	40-75	CH16SKS
G20SKS	48,5	M40x1	60-85	CH20SKS
G25SKS	55,1	M45x1,5	60-85	CH25SKS


DIN ISO 15488 (DIN6499)
GHIERE CHIUDIPINZA ETS
ETS CLAMPING NUTS
GHIERE ETS MINI - ESTRAZIONE CONCENTRICA - PIANI PER IL SERRAGGIO
MINI ETS NUTS - CONCENTRIC EXTRACTOR - FLATS FOR CLAMPING

Articolo	A	E	F	Nm	CH1
G16ETSM	24	22	M19x1	12÷24	CH.E22
G20ETSM	30,5	28	M24x1	16÷28	CH.E28
G25ETSM	36	34	M30x1	22÷32	CH.E34


GHIERE ETS - ESTRAZIONE CONCENTRICA - TACCHE PER IL SERRAGGIO
ETS NUTS - CONCENTRIC EXTRACTOR - SLOTS FOR CLAMPING

Articolo	A	F	Nm	CH1	CH2
G16ETS	32	M22x1,5	15÷50	CH16S	CD16S
G20ETS	35	M25x1,5	16÷75	CH20S	CD20S
G25ETS	42	M32x1,5	25÷100	CH25S	CD25S
G32ETS	50	M40x1,5	25÷140	CH32S	CD32S
G40ETS	63	M50x1,5	60÷170	CH40S	CD40S



Nm: Forza di serraggio consigliata - Recommended tightening torque

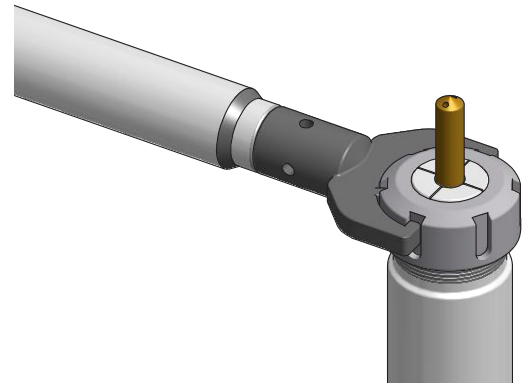
CH1: Chiave standard consigliata - Recommended standard wrench

CH2: Chiave dinamometrica consigliata - Recommended torque wrench



COPPIE DI SERRAGGIO CONSIGLIATE IN BASE ALL'ALESAAGGIO DELLA PINZA
RECOMMENDED TIGHTENING TORQUE RELATED TO BORE SIZE OF COLLETS

PINZA COLLET	ALESAGGIO BORE SIZE	FORZA SERRAGGIO TORQUE			
		FILETTATURE STANDARD STANDARD THREADS		FILETTATURE MINI MINI THREADS	
ER8	1 ÷ 5	-	-	M10x0,75	6 Nmm
ER11	1 ÷ 2,5	M14x0,75	8 Nmm	M13x0,75	7 Nmm
	3 ÷ 7		24 Nmm		17 Nmm
ER16	1	M22x1,5	8 Nmm	M19x1	7 Nmm
	1,5 ÷ 3,5		20 Nmm		12 Nmm
	4 ÷ 4,5		40 Nmm		18 Nmm
	5 ÷ 10		56 Nmm		27 Nmm
ER20	1	M25x1,5	16 Nmm	M24x1	12 Nmm
	1,5 ÷ 3,5		32 Nmm		24 Nmm
	7 ÷ 14		80 Nmm		37 Nmm
ER25	1 ÷ 3,5	M32x1,5	24 Nmm	M30x1	16 Nmm
	4 ÷ 4,5		56 Nmm		24 Nmm
	5 ÷ 7,5		80 Nmm		30 Nmm
	8 ÷ 16		104 Nmm		43 Nmm
ER32	2 ÷ 2,5	M40x1,5	24 Nmm	-	-
	3 ÷ 7,5		140 Nmm	-	-
	8 ÷ 20		160 Nmm	-	-
ER40	3 ÷ 26	M50x1,5	180 Nmm	-	-
ER50	6 ÷ 34	M64x2	240 Nmm	-	-



Si consiglia di chiudere le ghiera con la chiave dinamometrica con la forza di serraggio suggerita per ottenere la migliore concentricità della pinza.

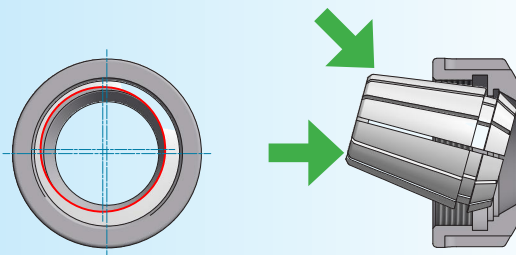
Non superare di oltre il 20% le coppie consigliate per non danneggiare il mandrino portapinze.

Clamp nuts with recommended torque to obtain the best runout accuracy.

Do not exceed more than 20% recommended tightening torque for not damage collet chuck.

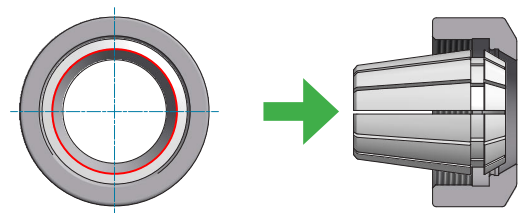
Montaggio di una pinza in una ghiera eccentrica.

Mounting of a collet in eccentric nut.



Montaggio di una pinza in una ghiera concentrica.

Mounting of a collet in concentric nut.



Le pinze devono essere montate sulla ghiera prima di venire serrate sul mandrino.

ER collets must be connected into nut before inserting tool or assembling onto chuck.

