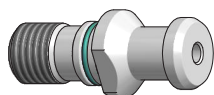


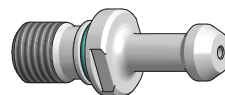
TIRANTI
PULL STUDS


FILETTO THREAD	Sforzo di chiusura Torque
M12	2÷2,4 Kgm
M16	6÷7,8 Kgm
M24	20÷24 Kgm

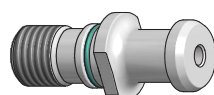
TIRANTI A DISEGNO O CON FILETTO A POLLICI FORNIBILI A RICHIESTA
SPECIAL PULL STUDS OR WITH INCH THREAD CAN BE SUPPLIED ON REQUEST


DIN69872

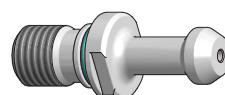
PS.DIN

PAG. 231

MAS403BT

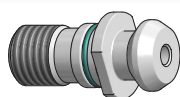
PS.BT

PAG. 239

ISO7388/2A

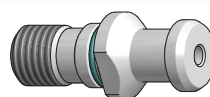
PS.TC

PAG. 233

HURCO

PS.BT HC

PAG. 241

ISO7388/2B

PS.CAT

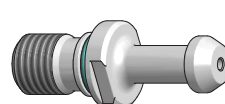
PAG. 234

KITAMURA

PS.KIT

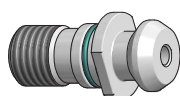
PAG. 242

OTT

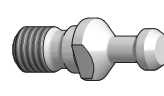
PS.OTT

PAG. 235

MITSUI SEIKI

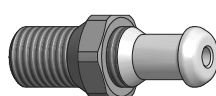
PS.MIT

PAG. 243

MAZAK

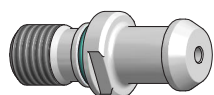
PS.MZ

PAG. 236

ALBERTI / COLOMBO
BIESSE
CMS
CSM

PS.WD

PAG. 244

C.B. FERRARI

PS.CBF

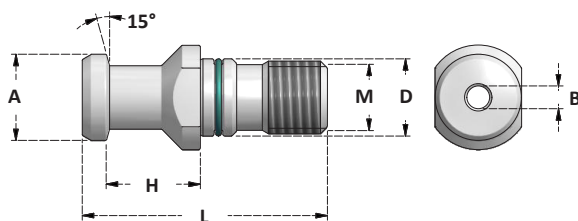
PAG. 237

JIS-B 6339

PS.JS

PAG. 238

TIRANTI DIN69872

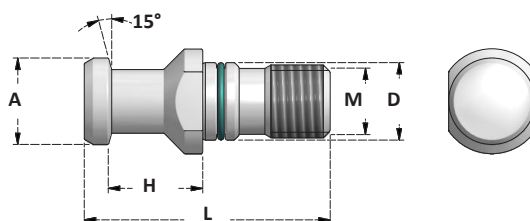
PULL STUDS DIN69872



TIRANTI DIN69872A FORATI

PULL STUDS DIN69872A WITH COOLANT BORE

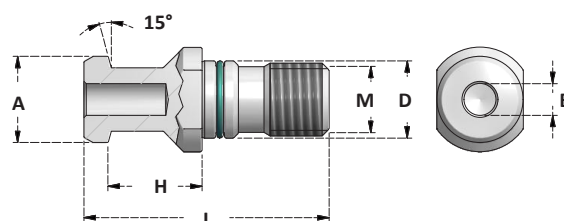
Articolo	M	A	H±0,05	D	L	B	CONO	
PS.DIN30F	M12	13	19	13	44	2,5	30	Senza O-Ring Without O-Ring
PS.DIN40F	M16	19	20	17	54	7	40	
PS.DIN50F	M24	28	25	25	74	11,5	50	



TIRANTI DIN69872A SENZA FORO

PULL STUDS DIN69872A WITHOUT COOLANT BORE

Articolo	M	A	H±0,05	D	L	B	CONO	
PS.DIN30SF	M12	13	19	13	44	/	30	Senza O-Ring Without O-Ring
PS.DIN40SF	M16	19	20	17	54	/	40	
PS.DIN50SF	M24	28	25	25	74	/	50	



TIRANTI 69872B SEMIFORATI

PULL STUDS 69872B WITH HALF BORE

Articolo	M	A	H±0,05	D	L	B	CONO
PS.DIN40B	M16	19	20	17	54	7	40
PS.DIN50B	M24	28	25	25	74	11,5	50

SEDE CHIP A RICHIESTA
CHIP HOLE ON REQUEST

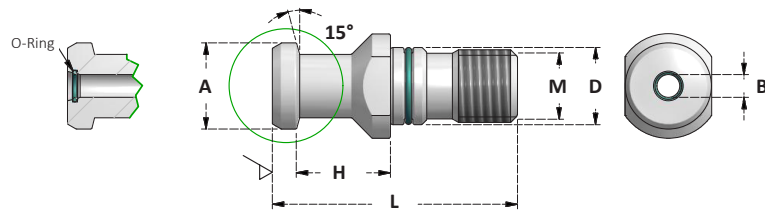
ACCESSORI - ACCESSORIES



TIRANTI DIN69872

PULL STUDS DIN69872

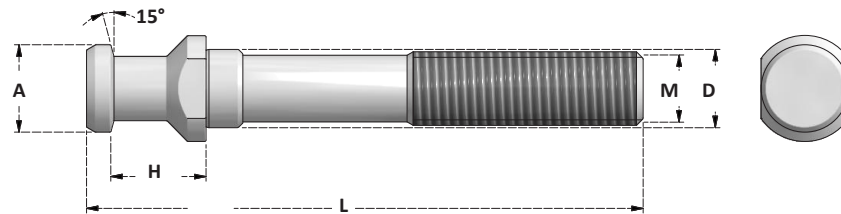
TESTA RETTIFICATA
GRINDED HEAD



TIRANTI CON DOPPIO O-RING PER REFRIGERANTE AD ALTA PRESSIONE

PULL STUDS WITH DOUBLE O-RING FOR HIGH PRESSION COOLANT

Articolo	M	A	H±0,05	D	L	B	CONO
PS.DIN40.2OR	M16	19	20	17	54	7	40
PS.DIN40.2OR-BT	M16	19	23	17	54	7	40
PS.DIN50.2OR	M24	28	25	25	74	7	50



TIRANTI DIN69872 PROLUNGATI PER RIDUZIONI A CONO MORSE

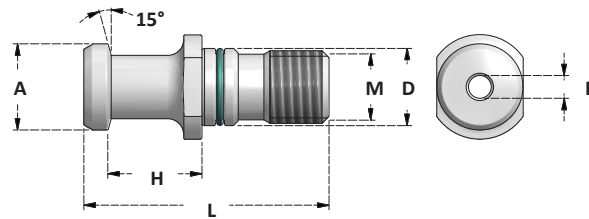
PULL STUDS DIN69872 EXTENDED FOR MORSE TAPER SLEEVES

Articolo	M	A	H±0,05	D	L	B	CONO
PSL.DIN40.M10	M10	19	20	17	111	/	40
PSL.DIN40.M12	M12	19	20	17	116	/	40
PSL.DIN40.M16	M16	19	20	17	121	/	40

ACCESSORI - ACCESSORIES

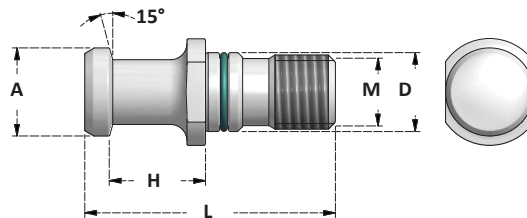


TIRANTI ISO 7388/2A
PULL STUDS ISO 7388/2A



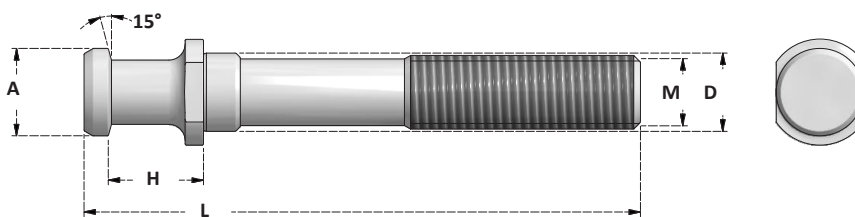
TIRANTI ISO7388/2A FORATI
PULL STUDS ISO7388/2A WITH COOLANT BORE

Articolo	M	A	H±0,05	D	L	B	CONO	
PS.TC30F	M12	12	19	13	44	4	30	Senza O-Ring Without O-Ring
PS.TC40F	M16	19	20	17	54	7	40	
PS.TC50F	M24	28	25	25	74	11,5	50	



TIRANTI ISO7388/2A SENZA FORO
PULL STUDS ISO7388/2A WITHOUT COOLANT BORE

Articolo	M	A	H±0,05	D	L	B	CONO	
PS.TC30SF	M12	12	19	13	44	/	30	Senza O-Ring Without O-Ring
PS.TC40SF	M16	19	20	17	54	/	40	
PS.TC50SF	M24	28	25	25	74	/	50	

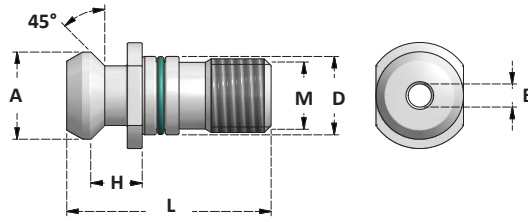


TIRANTI ISO7388/2A PROLUNGATI PER RIDUZIONI A CONO MORSE
PULL STUDS ISO7388/2A EXTENDED FOR MORSE TAPER SLEEVES

Articolo	M	A	H±0,05	D	L	B	CONO	
PSL.TC40.M10	M10	19	20	17	111	/	40	
PSL.TC40.M12	M12	19	20	17	116	/	40	
PSL.TC40.M16	M16	19	20	17	121	/	40	

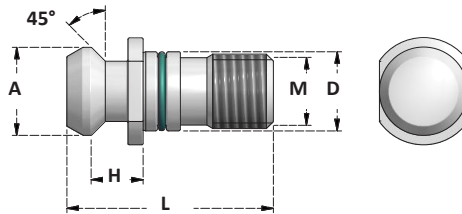
SEDE CHIP A RICHIESTA
CHIP HOLE ON REQUEST

TIRANTI ISO 7388/2B
PULL STUDS ISO7388/2B



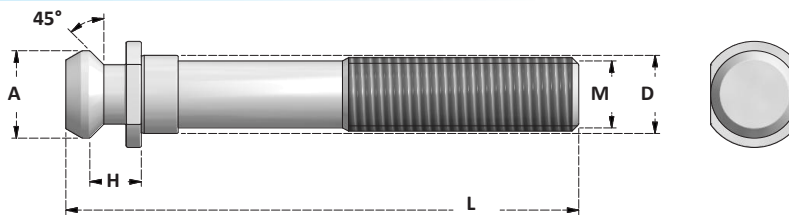
TIRANTI ISO7388/2B FORATI
PULL STUDS ISO7388/2B WITH COOLANT BORE

Articolo	M	A	H±0,05	D	L	B	CONO	
PS.CAT30F	M12	13,35	8,15	12,5	34	4	30	Senza O-Ring Without O-Ring
PS.CAT40F	M16	18,95	11,15	17	44,5	7	40	
PS.CAT50F	M24	29,1	17,95	25	65,5	11,5	50	



TIRANTI ISO7388/2B SENZA FORO
PULL STUDS ISO7388/2B WITHOUT COOLANT BORE

Articolo	M	A	H±0,05	D	L	B	CONO	
PS.CAT30SF	M12	13,35	8,15	12,5	34	/	30	Senza O-Ring Without O-Ring
PS.CAT40SF	M16	18,95	11,15	17	44,5	/	40	
PS.CAT50SF	M24	29,1	17,95	25	65,5	/	50	



TIRANTI ISO7388/2B PROLUNGATI PER RIDUZIONI CONO MORSE
PULL STUDS ISO7388/2B EXTENDED FOR MORSE TAPER SLEEVES

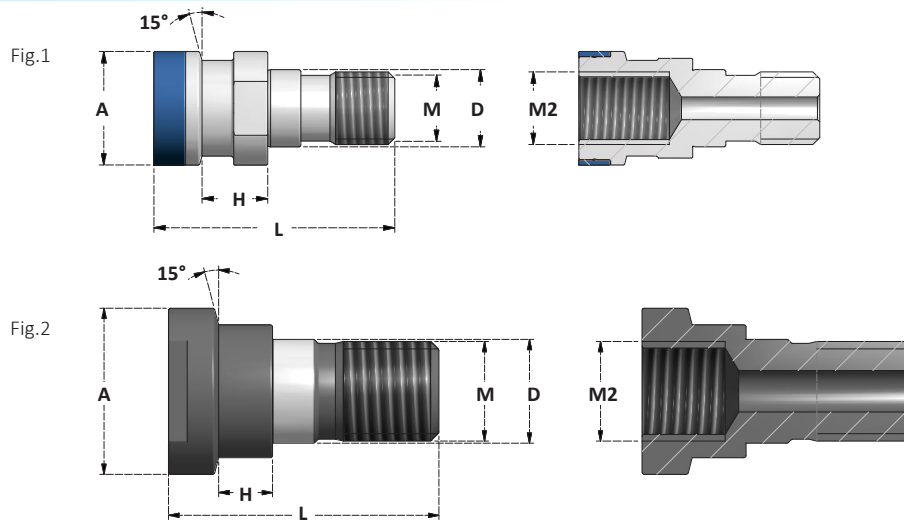
Articolo	M	A	H±0,05	D	L	B	CONO
PSL.CAT40.M10	M10	18,95	11,15	17	101,4	/	40
PSL.CAT40.M12	M12	18,95	11,15	17	106,4	/	40
PSL.CAT40.M16	M16	18,95	11,15	17	111,4	/	40

SEDE CHIP A RICHIESTA
CHIP HOLE ON REQUEST

ACCESSORI - ACCESSORIES



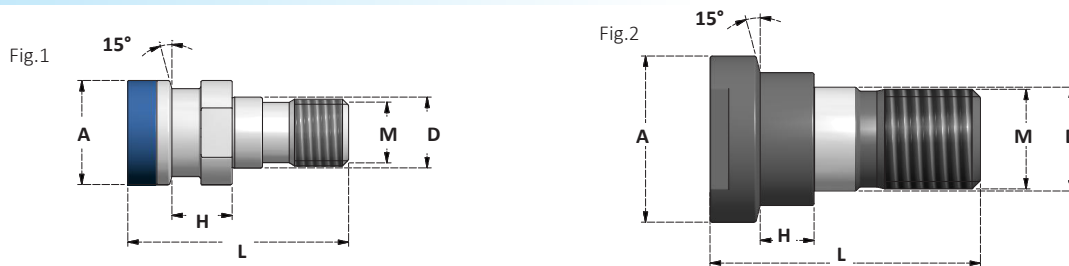
TIRANTI OTT
OTT PULL STUDS



TIRANTI OTT FORATI

OTT PULL STUDS WITH COOLANT BORE

Articolo	M	A	H±0,05	D	L	M2	CONO	Fig
PS.OTT40.TCF	M16	25	14,52	17	53,1	M16	TC40	Fig.1
PS.OTT40.BTF	M16	25	17,54	17	56	M16	BT40	Fig.1
PS.OTT50.TBF	M24	39,6	14	25	65	M24	TC/BT50	Fig.2

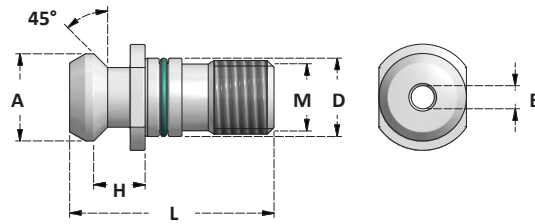


TIRANTI OTT NON FORATI

OTT PULL STUDS WITHOUT COOLANT BORE

Articolo	M	A	H±0,05	D	L	M2	CONO	Fig
PS.OTT40.TCSF	M16	25	14,52	17	53,1	/	TC40	Fig.1
PS.OTT40.BTSF	M16	25	17,54	17	56	/	BT40	Fig.1
PS.OTT50.TBSF	M24	39,6	14	25	65	/	TC/BT50	Fig.2

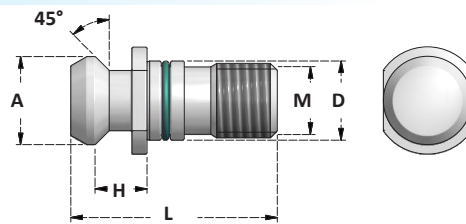
TIRANTI MAZAK
MAZAK PULL STUDS



TIRANTI MAZAK FORATI

PULL STUDS MAZAK WITH COOLANT BORE

Articolo	M	A	H±0,05	D	L	B	CONO
PS.CAT40.MZ1F	M16	18,8	11,17	17	41,25	7	40
PS.CAT40.MZ2F	M16	18,8	14,02	17	44,1	7	40
PS.CAT50.MZ3F	M24	28,95	17,58	25	65,2	10	50
PS.CAT50.MZ4F	M24	28,95	17,78	25	65,4	10	50

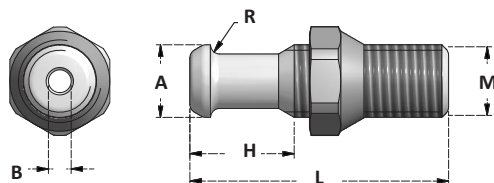


TIRANTI MAZAK SENZA FORO

PULL STUDS MAZAK WITHOUT COOLANT BORE

Articolo	M	A	H±0,05	D	L	B	CONO
PS.CAT40.MZ1SF	M16	18,8	11,17	17	41,25	/	40
PS.CAT40.MZ2SF	M16	18,8	14,02	17	44,1	/	40

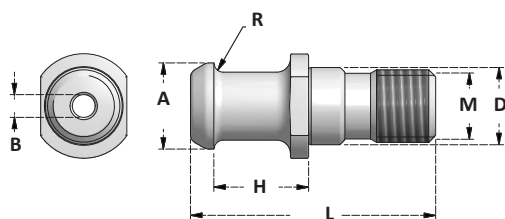
TIRANTI C.B. FERRARI
PULL STUDS C.B. FERRARI



TIRANTI C.B. FERRARI FORATI
PULL STUDS C.B. FERRARI WITH COOLANT BORE

Articolo	M	R	A	H±0,05	L	B	CONO
PS.CBF40.050	M16	3,7	16	23	57	5	40

Dado incluso
Nut included



TIRANTI C.B. FERRARI FORATI
PULL STUDS C.B. FERRARI WITH COOLANT BORE

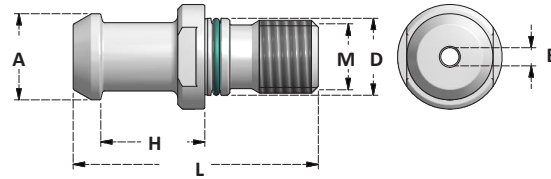
Articolo	M	R	A	H±0,05	D	L	B	CONO
PS.CBF30.051	M12	3,4	12	19,5	13	44	3	30
PS.CBF40.051	M16	3,7	19	20,31	17	54	5	40
PS.CBF50.051	M24	4,3	28	25,5	25	74	6	50

SEDE CHIP A RICHIESTA
CHIP HOLE ON REQUEST

TIRANTI JIS-B 6339

PULL STUDS JIS-B 6339

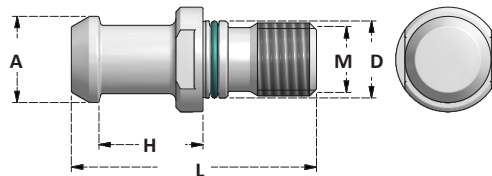
TESTA RETTIFICATA
GRINDED HEAD



TIRANTI JIS-B 6339 FORATI

PULL STUDS JIS-B 6339 WITH COOLANT BORE

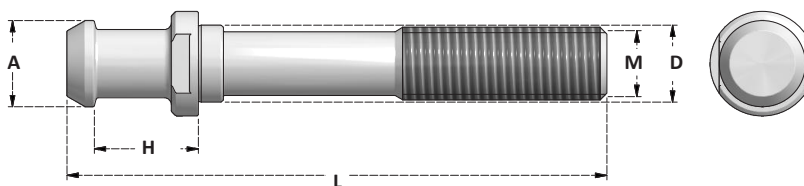
Articolo	M	A	H±0,05	D	L	B	CONO	
PS.JS30.F3	M12	12	18,4	12,5	43	3	30	Senza O-Ring Without O-Ring
PS.JS40.F3	M16	19	23	17	54	3	40	
PS.JS40.F4	M16	19	23	17	54	4	40	
PS.JS40.F5	M16	19	23	17	54	5	40	
PS.JS40.F554	M16	19	23	17	54	5,5-4	40	
PS.JS40.F6	M16	19	23	17	54	6	40	
PS.JS40.F7	M16	19	23	17	54	7	40	
PS.JS50.F10	M24	28	25	25	74	10	50	



TIRANTI JIS-B 6339 SENZA FORO

PULL STUDS JIS-B 6339 WITHOUT COOLANT BORE

Articolo	M	A	H±0,05	D	L	B	CONO	
PS.JS30SF	M12	12	18,4	12,5	43	/	30	Senza O-Ring Without O-Ring
PS.JS40SF	M16	19	23	17	54	/	40	
PS.JS50SF	M24	28	25	25	74	/	50	



TIRANTI JIS-B 6339 PROLUNGATI PER RIDUZIONI CONO MORSE

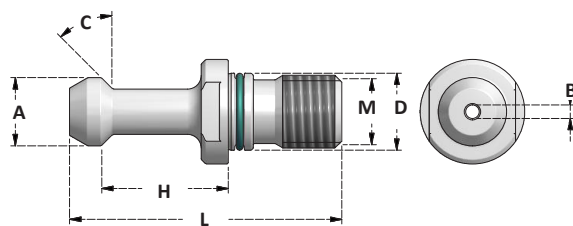
PULL STUDS JIS-B 6339 EXTENDED FOR MORSE TAPER SLEEVES

Articolo	M	A	H±0,05	D	L	B	CONO
PSL.JS40.M10	M10	19	23	17	114	/	40
PSL.JS40.M12	M12	19	23	17	114	/	40
PSL.JS40.M16	M16	19	23	17	119	/	40

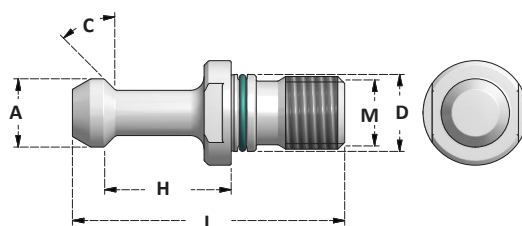
SEDE CHIP A RICHIESTA
CHIP HOLE ON REQUEST

ACCESSORI - ACCESSORIES



TIRANTI MAS403BT
PULL STUDS MA403BT

TIRANTI MAS403BT FORATI
PULL STUDS MAS403BT WITH COOLANT BORE

Articolo	M	C	A	H±0,05	D	L	B	CONO	
PS.BT30.1F	M12	45°	11	18	12,5	43	2,5	BT30	Senza O-Ring
PS.BT30.2F	M12	60°	11	18	12,5	43	2,5	BT30	Senza O-Ring
PS.BT30.3F	M12	90°	11	18	12,5	43	2,5	BT30	Senza O-Ring
PS.BT40.1F	M16	45°	15	28	17	60	3	BT40	
PS.BT40.2F	M16	60°	15	28	17	60	3	BT40	
PS.BT40.3F	M16	90°	15	28	17	60	3	BT40	
PS.BT50.1F	M24	45°	23	35	25	85	6	BT50	
PS.BT50.2F	M24	60°	23	35	25	85	6	BT50	
PS.BT50.3F	M24	90°	23	35	25	85	6	BT50	


TIRANTI MAS403BT SENZA FORO
PULL STUDS MAS403BT WITHOUT COOLANT BORE

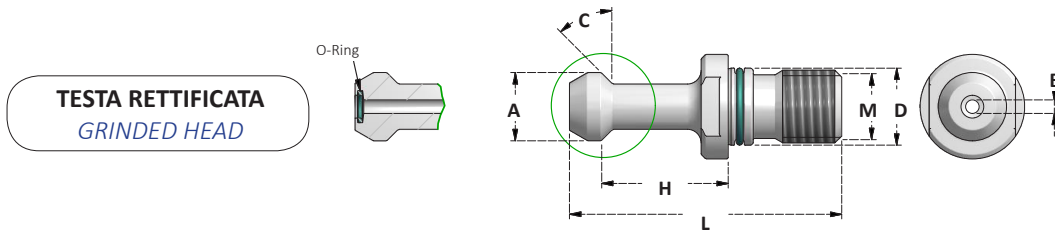
Articolo	M	C	A	H±0,05	D	L	B	CONO	
PS.BT30.1SF	M12	45°	11	18	12,5	43	/	BT30	Senza O-Ring
PS.BT30.2SF	M12	60°	11	18	12,5	43	/	BT30	Senza O-Ring
PS.BT30.3SF	M12	90°	11	18	12,5	43	/	BT30	Senza O-Ring
PS.BT40.1SF	M16	45°	15	28	17	60	/	BT40	
PS.BT40.2SF	M16	60°	15	28	17	60	/	BT40	
PS.BT40.3SF	M16	90°	15	28	17	60	/	BT40	
PS.BT50.1SF	M24	45°	23	35	25	85	/	BT50	
PS.BT50.2SF	M24	60°	23	35	25	85	/	BT50	
PS.BT50.3SF	M24	90°	23	35	25	85	/	BT50	

SEDE CHIP A RICHIESTA
CHIP HOLE ON REQUEST

ACCESSORI - ACCESSORIES

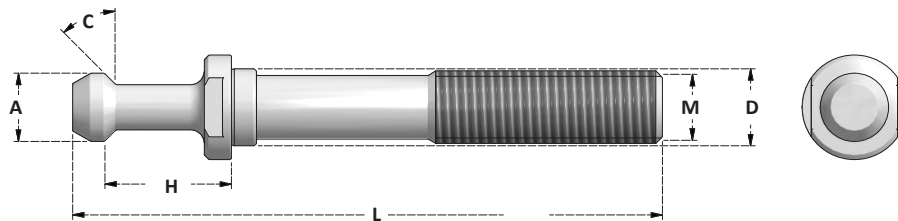
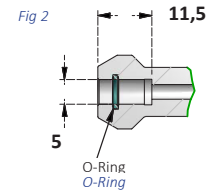


TIRANTI MAS403BT
PULL STUDS MAS403BT



TIRANTI CON DOPPIO O-RING PER REFRIGERANTE AD ALTA PRESSIONE
PULL STUDS WITH DOUBLE O-RING FOR HIGH PRESSION COOLANT

Articolo	M	C	A	H±0,05	D	L	B	CONO
PS.BT40.1.2OR	M16	45°	15	28	17	60	3	40
PS.BT40.1.2OR-5	M16	45°	15	28	17	60	3	40
PS.BT40.2.2OR	M16	60°	15	28	17	60	3	40
PS.BT50.1.2OR	M24	45°	23	35	25	85	6	50
PS.BT50.2.2OR	M24	60°	23	35	25	85	6	50
PS.BT50.3.2OR	M24	90°	23	35	25	85	6	50



TIRANTI MAS403 PROLUNGATI PER RIDUZIONI A CONO MORSE
PULL STUDS MAS403 EXTENDED FOR MORSE TAPER SLEEVES

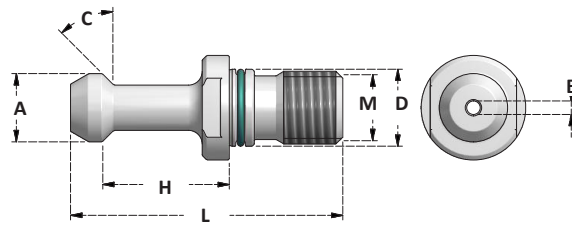
Articolo	M	C	A	H±0,05	D	L	B	CONO
PSL.BT40.1M10	M10	45°	15	28	17	120	/	40
PSL.BT40.1M12	M12	45°	15	28	17	120	/	40
PSL.BT40.1M16	M16	45°	15	28	17	125	/	40
PSL.BT40.2M10	M10	60°	15	28	17	120	/	40
PSL.BT40.2M12	M12	60°	15	28	17	120	/	40
PSL.BT40.2M16	M16	60°	15	28	17	125	/	40
PSL.BT40.3M10	M10	90°	15	28	17	120	/	40
PSL.BT40.3M12	M12	90°	15	28	17	120	/	40
PSL.BT40.3M16	M16	90°	15	28	17	125	/	40

SEDE CHIP A RICHIESTA
CHIP HOLE ON REQUEST

ACCESSORI - ACCESSORIES

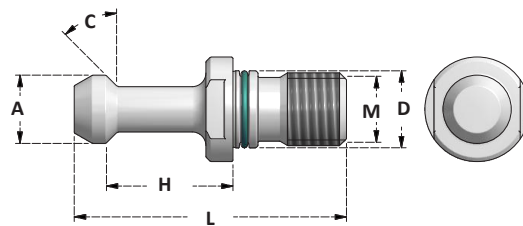


TIRANTI HURCO
PULL STUDS HURCO



TIRANTI HURCO FORATI
PULL STUDS HURCO WITH COOLANT BORE

Articolo	M	C	A	H±0,05	D	L	B	CONO
PS.BT40.HC1F	M16	45°	15	25,15	17	57,15	3	40
PS.BT40.HC2F	M16	60°	15	25,15	17	57,15	3	40
PS.BT40.HC3F	M16	90°	15	25,15	17	57,15	3	40

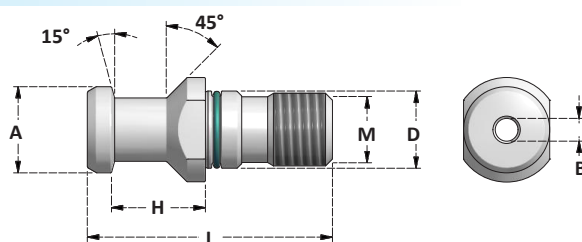


TIRANTI HURCO SENZA FORO
PULL STUDS HURCO WITHOUT COOLANT BORE

Articolo	M	C	A	H±0,05	D	L	B	CONO
PS.BT40.HC1SF	M16	45°	15	25,15	17	57,15	/	40
PS.BT40.HC2SF	M16	60°	15	25,15	17	57,15	/	40
PS.BT40.HC3SF	M16	90°	15	25,15	17	57,15	/	40

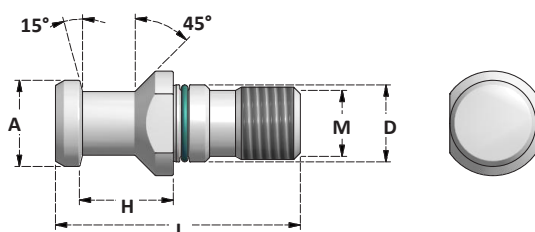
SEDE CHIP A RICHIESTA
CHIP HOLE ON REQUEST

TIRANTI KITAMURA
PULL STUDS KITAMURA



TIRANTI KITAMURA FORATI
PULL STUDS KITAMURA WITH COOLANT BORE

Articolo	M	A	H±0,05	D	L	B	CONO
PS.KIT40F	M16	19	23	17	54	7	40



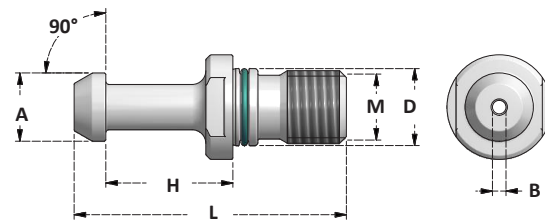
TIRANTI KITAMURA SENZA FORO
PULL STUDS KITAMURA WITHOUT COOLANT BORE

Articolo	M	C	A	H±0,05	D	L	B	CONO
PS.KIT30SF	M12	45°	13	23,2	21,5	48	/	30
PS.KIT40SF	M16	15°	19	23,2	17	57,2	/	40

Senza O-Ring
Without O-Ring

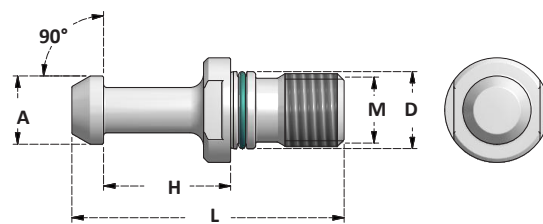
SEDE CHIP A RICHIESTA
CHIP HOLE ON REQUEST

TIRANTI MITSUI SEIKI
PULL STUDS MITSUI SEIKI



TIRANTI MITSUI SEIKI FORATI
PULL STUDS MITSUI SEIKI WITH COOLANT BORE

Articolo	M	A	H±0,05	D	L	B	CONO
PS.MIT40F	M16	15	18	17	50	3	40
PS.MIT50F	M24	24	23	25	71	8	50



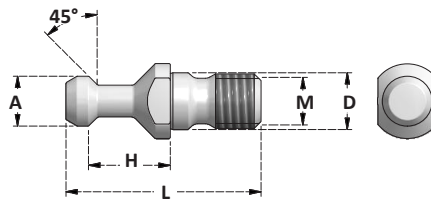
TIRANTI MITSUI SEIKI SENZA FORO
PULL STUDS MITSUI SEIKI WITHOUT COOLANT BORE

Articolo	M	A	H±0,05	D	L	B	CONO
PS.MIT40SF	M16	15	18	17	50	/	40
PS.MIT50SF	M24	24	23	25	71	/	50

SEDE CHIP A RICHIESTA
CHIP HOLE ON REQUEST

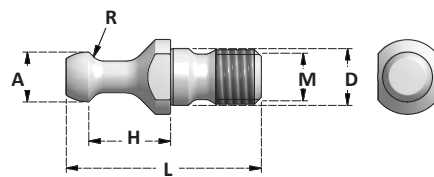
TIRANTI PER MANDRINI PER LAVORAZIONE DEL LEGNO

PULL STUDS FOR WOODWORKING TOOL HOLDERS



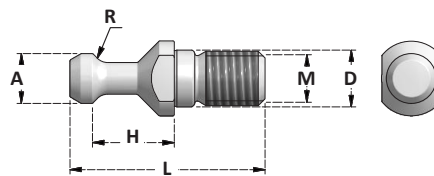
ALBERTI - COLOMBO

Articolo	M	A	H±0,05	D	L	CONO
PS.WD30.ALB	M12	12,8	19	13	44	30



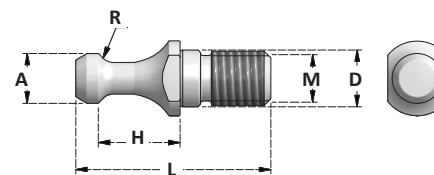
BIESSE

Articolo	M	R	A	H±0,05	D	L	CONO
PS.WD30.BS	M12	3,2	12	24	13	44	30



CMS

Articolo	M	R	A	H±0,05	D	L	CONO
PS.WD30.CMS	M12	2,4	12,8	19	11	44	30



SCM

Articolo	M	R	A	H±0,05	D	L	CONO
PS.WD30.SCM	M10	2,3	8,5	18,3	11	42,5	30