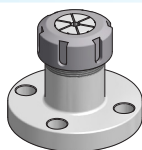


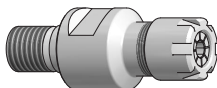


ALTRI PORTAUTENSILI
OTHER TOOLHOLDERS



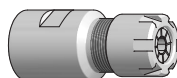
MANDRINI PORTAPINZE ER A FLANGIA
FLANGE ER COLLET CHUCKS

PAG. 201



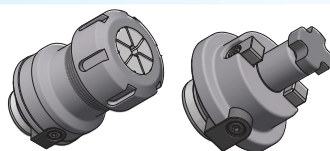
ADATTATORI PORTAPINZE ER CON ATTACCO FILETTATO
ER COLLET CHUCKS ADAPTERS WITH SCREW

PAG. 201



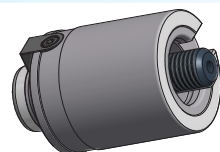
MANDRINI PORTAPINZA ER MINI CON ATTACCO DIN238
DIN238 SHANK MINI ER COLLET CHUCKS

PAG. 201



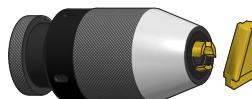
**INSERZIONI PORTAUTENSILI
PER SISTEMA MODULARE TIPO VARILOCK**
*TOOLHOLDER ADAPTERS
FOR VARILOCK TYPE MODULAR SYSTEM*

PAG. 202



**RIDUZIONI E PROLUNGHE
PER SISTEMA MODULARE TIPO VARILOCK**
*EXTENSIONS AND REDUCTIONS
FOR VARILOCK TYPE MODULAR SYSTEM*

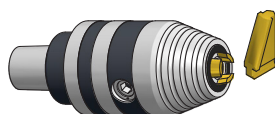
PAG. 203



MANDRINI PORTAPUNTA E RICAMBI
DRILL CHUCKS AND SPARE PARTS

DCK

PAG. 204

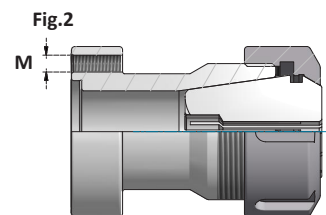
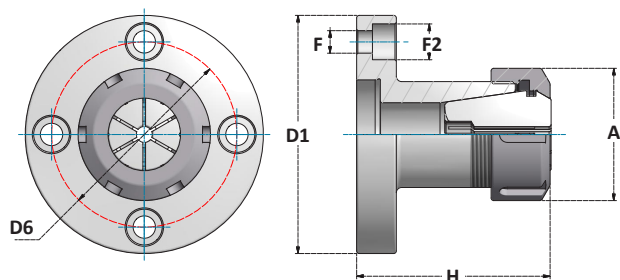


MANDRINI PORTAPUNTA E RICAMBI
DRILL CHUCKS AND SPARE PARTS

CP

PAG. 205



**MANDRINI PORTAPINZA ER A FLANGIA**
FLANGE ER COLLET CHUCKS

Articolo	D1	D6	M	H	Fig.
FLB50.ERC32	50	40	M6	72	2

Articolo	D1	D6	F	F2	H	Fig.
FLB90.ERC32	90	70	8,5	13,5	72	1
FLB110.ERC40	110	86	8,5	13,5	87	1
FLB110.ERC50	110	86	8,5	13,5	106	1

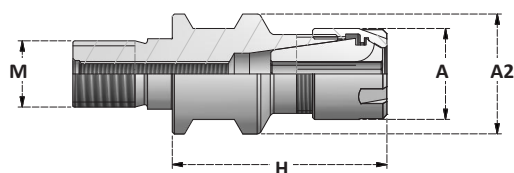
	A	Collets Range	Ghiera Nut
...ERC32	50	2÷22	G32S
...ERC40	63	3÷30	G40S
...ERC50	78	6÷34	G50S

ACCESSORI - ACCESSORIES



M

ERC MINI

DIN ISO 15488 (DIN6499)**ADATTATORI PORTAPINZE ER CON ATTACCO FILETTATO**
ER COLLET CHUCKS ADAPTERS WITH SCREW

Articolo	M	A2	H
M12.H50.ERC16M	M12	21	50
M16.H50.ERC16M	M16	29	50

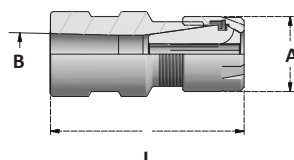
	A	Collets Range	Ghiera Nut
...ERC16M	22	1÷10	G16M

ACCESSORI - ACCESSORIES

**DIN238**

B

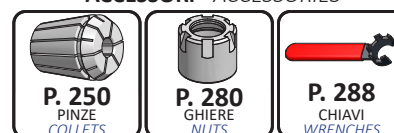
ERC MINI

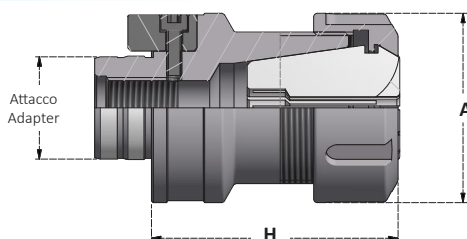
DIN ISO 15488 (DIN6499)**MANDRINI PORTAPINZA ER MINI CON ATTACCO DIN238**
DIN238 SHANK MINI ER COLLET CHUCKS

Articolo	B	L
B12.L62.ERC11M	B12	62
B12.L55.ERC16M	B12	55
B12.L67.ERC20M	B12	67
B16.L85.ERC16M	B16	85
B16.L80.ERC20M	B16	80

	A	Collets Range	Ghiera Nut
...ERC11M	16	1÷7	G11M
...ERC16M	22	1÷10	G16M
...ERC20M	28	1÷14	G20M

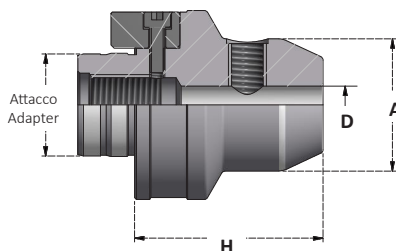
ACCESSORI - ACCESSORIES



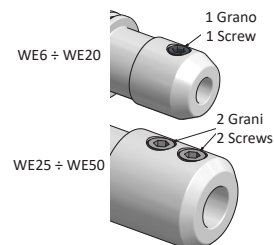
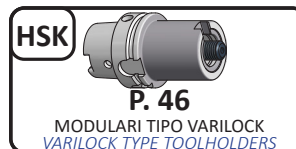
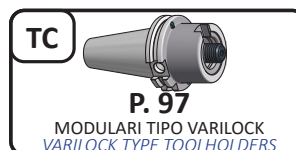
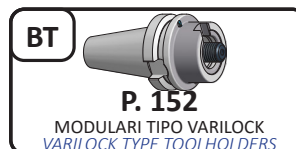
**PORTAPINZE ER PER SISTEMA MODULARE VARILOCK**
ER COLLET CHUCKS FOR VARILOCK MODULAR SYSTEM

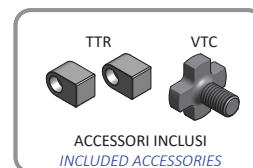
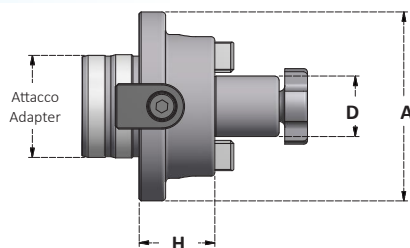
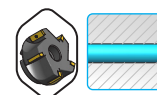
Articolo	Attacco Adapter	H	A	Range Collet	Ghiera Nut
MD50.H63.ERC20	MD50 27,3 / 27	63	34	1÷14	G20SE
MD50.H63.ERC25	MD50 27,3 / 27	63	42	1÷20	G25S
MD50.H65.ERC32	MD50 27,3 / 27	65	50	2÷22	G32S
MD63.H77.ERC32	MD63 32,3 / 32	77	50	2÷22	G32S
MD63.H86.ERC40	MD63 32,3 / 32	86	63	3÷30	G40S
MD80.H90.ERC40	MD80 32,3 / 32	90	63	3÷30	G40S

ACCESSORI - ACCESSORIES

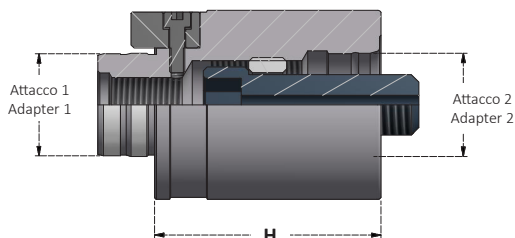
**P. 250**
PINZE
COLLETS**P. 280**
GHIERE
NUTS**P. 288**
CHIAVI
WRENCHES**PORTAFRESE WELDON PER SISTEMA MODULARE VARILOCK**
END MILL HOLDERS WELDON FOR VARILOCK MODULAR SYSTEM

Articolo	Attacco Adapter	D	H	A
MD50.H50.WE6	MD50 27,3 / 27	6	50	25
MD50.H50.WE8	MD50 27,3 / 27	8	50	28
MD50.H50.WE10	MD50 27,3 / 27	10	50	35
MD50.H60.WE12	MD50 27,3 / 27	12	50	42
MD50.H60.WE14	MD50 27,3 / 27	14	60	44
MD50.H60.WE16	MD50 27,3 / 27	16	60	48
MD50.H60.WE18	MD50 27,3 / 27	18	60	50
MD50.H62.WE20	MD50 27,3 / 27	20	62	52
MD50.H80.WE25	MD50 27,3 / 27	25	80	65
MD63.H70.WE10	MD63 32,3 / 32	10	70	35
MD63.H70.WE12	MD63 32,3 / 32	12	70	42
MD63.H70.WE14	MD63 32,3 / 32	14	70	44
MD63.H70.WE16	MD63 32,3 / 32	16	70	48
MD63.H70.WE18	MD63 32,3 / 32	18	70	50
MD63.H70.WE20	MD63 32,3 / 32	20	70	52
MD63.H80.WE25	MD63 32,3 / 32	25	80	62
MD63.H80.WE32	MD63 32,3 / 32	32	80	63
MD63.H90.WE40	MD63 32,3 / 32	40	90	80
MD80.H70.WE16	MD80 32,3 / 32	16	70	48
MD80.H70.WE20	MD80 32,3 / 32	20	70	52
MD80.H80.WE25	MD80 32,3 / 32	25	80	65
MD80.H80.WE32	MD80 32,3 / 32	32	80	72
MD80.H90.WE40	MD80 32,3 / 32	40	90	79

**P. 303**
GRANI
SCREWS**P. 46**MODULARI TIPO VARILOCK
VARILOCK TYPE TOOLHOLDERS**P. 97**MODULARI TIPO VARILOCK
VARILOCK TYPE TOOLHOLDERS**P. 152**MODULARI TIPO VARILOCK
VARILOCK TYPE TOOLHOLDERS

**PORTAFRESE FISSI PER SISTEMA MODULARE VARILOCK**
SHELL MILL HOLDERS FOR VARILOCK MODULAR SYSTEM

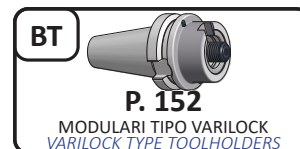
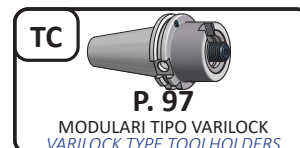
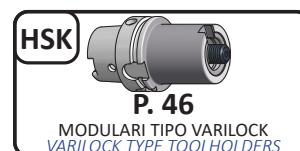
Articolo	Attacco Adapter	D	H	A
MD50.H30.D16S	MD50 27,3 / 27	16	30	50
MD50.H20.D22S	MD50 27,3 / 27	22	20	50
MD50.H20.D27S	MD50 27,3 / 27	27	20	50
MD50.H25.D32S	MD50 27,3 / 27	32	25	50
MD63.H30.D22S	MD63 32,3 / 32	22	30	63
MD63.H30.D27S	MD63 32,3 / 32	27	30	63
MD63.H30.D32S	MD63 32,3 / 32	32	30	63
MD63.H30.D40S	MD63 32,3 / 32	40	30	63
MD80.H30.D27S	MD80 32,3 / 32	27	30	80
MD80.H30.D32S	MD80 32,3 / 32	32	30	80
MD80.H30.D40S	MD80 32,3 / 32	40	30	80

ACCESSORI - ACCESSORIES**ADATTATORI PER SISTEMA MODULARE VARILOCK**
ADAPTERS FOR VARILOCK MODULAR SYSTEM**PROLUNGHE**
EXTENSIONS

Articolo	Attacco 1 Adapter 1	Attacco 2 Adapter 2	H
MD50.H60.MD50	MD50 27,3 / 27	MD50 27,3 / 27	60
MD50.H80.MD50	MD50 27,3 / 27	MD50 27,3 / 27	80
MD50.H100.MD50	MD50 27,3 / 27	MD50 27,3 / 27	100
MD63.H80.MD63	MD63 32,3 / 32	MD63 32,3 / 32	80
MD63.H120.MD63	MD63 32,3 / 32	MD63 32,3 / 32	120
MD80.H80.MD80	MD80 32,3 / 32	MD80 32,3 / 32	80
MD80.H100.MD80	MD80 32,3 / 32	MD80 32,3 / 32	100
MD80.H120.MD80	MD80 32,3 / 32	MD80 32,3 / 32	120
MD80.H140.MD80	MD80 32,3 / 32	MD80 32,3 / 32	140
MD80.H160.MD80	MD80 32,3 / 32	MD80 32,3 / 32	160

RIDUZIONI
REDUCTIONS

Articolo	Attacco 1 Adapter 1	Attacco 2 Adapter 2	H
MD63.H60.MD50	MD63 32,3 / 32	MD50 27,3 / 27	60
MD80.H80.MD63	MD80 32,3 / 32	MD63 32,3 / 32	80





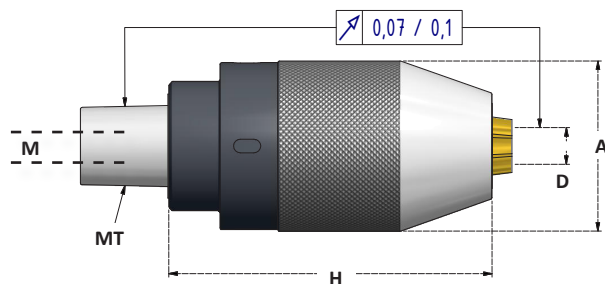
MANDRINI DA TRAPANO CON GRIFFE RIVESTITE IN TITANIO - ROTAZIONE DESTRA - ATTACCO MT

DRILL CHUCK HEADS WITH TITANIUM COATED JAWS - RIGHT ROTATION - TAPER MT



Articolo	D	A	H	MT	M
DC8S.MT2	0,5- 8	37,5	60,5	MT2	M6
DC13S.MT3	1- 13	50,5	80,5	MT3	M8
DC16S.MT3	2,5- 16	57	85	MT3	M8

FORNITI SENZA CHIAVE
SUPPLIED WITHOUT WRENCH

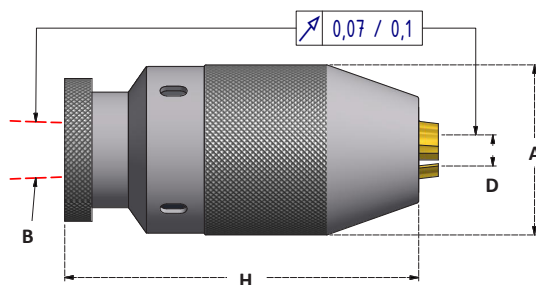


MANDRINI DA TRAPANO CON GRIFFE RIVESTITE IN TITANIO - ROTAZIONE DESTRA - ATTACCO DIN238

DRILL CHUCK HEADS WITH TITANIUM COATED JAWS - TAPER DIN238

Articolo	D	A	H	B
DC8S.B12	0,5- 8	37,5	68	B12
DC10S.B12	0,5- 10	43	80	B12
DC10S.B16	0,5- 10	43	80	B16
DC13S.B12	1- 13	50,5	90	B12
DC13S.B16	1- 13	50,5	90	B16
DC16S.B16	2,5- 16	57	100	B16
DC16S.B18	2,5- 16	57	100	B18

FORNITI SENZA CHIAVE
SUPPLIED WITHOUT WRENCH



SET DI 3 GRIFFE DI RICAMBIO RIVESTITE IN TITANIO

SET OF 3 TITANIUM COATED JAWS

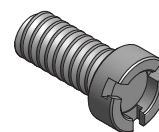
Articolo
GF.DC8S
GF.DC10S
GF.DC13S
GF.DC16S



VITI PER GRIFFE

JAWS SCREW

Articolo
VT.DC8S
VT.DC10S
VT.DC13S
VT.DC16S

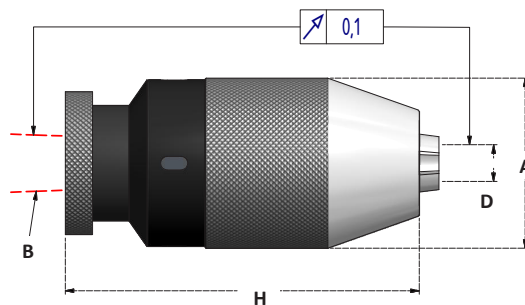


MANDRINI DA TRAPANO CON GRIFFE IN ACCIAIO - ROTAZIONE DESTRA - ATTACCO DIN238

DRILL CHUCK HEADS WITH STAINLESS JAWS - TAPER DIN238

Articolo	D	A	H	B
DC8.B12	0,5- 8	37,5	68	B12
DC10.B12	0,5- 10	43	80	B12
DC13.B16	1- 13	50,5	90	B16
DC16.B16	2,5- 16	57	100	B16
DC16.B18	2,5- 16	57	100	B18

FORNITI SENZA CHIAVE
SUPPLIED WITHOUT WRENCH



ACCESSORI - ACCESSORIES



P. 289
CHIAVI
WRENCHES

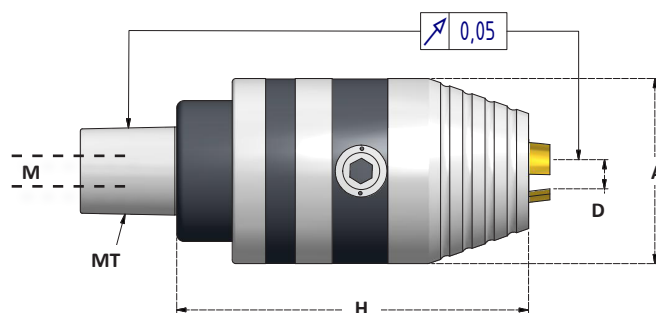




MANDRINI DA TRAPANO CON GIRFFE RIVESTITE IN TITANIO - ROTAZIONE DESTRA E SINISTRA - ATTACCO MT
DRILL CHUCK HEADS WITH TITANIUM COATED JAWS - RIGHT AND LEFT ROTATION - TAPER MT

Articolo	D	A	H	MT	M
CP8S.MT3	0,5- 8	37,5	73	MT3	M8
CP13S.MT3	1- 13	50,5	91	MT3	M8
CP16S.MT3	2,5- 16	57	96	MT3	M8

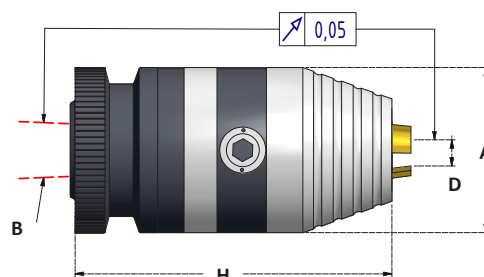
FORNITI SENZA CHIAVE
SUPPLIED WITHOUT WRENCH



MANDRINI DA TRAPANO CON GIRFFE RIVESTITE IN TITANIO - ROTAZIONE DESTRA E SINISTRA - ATTACCO DIN238
DRILL CHUCK HEADS WITH TITANIUM COATED JAWS - RIGHT AND LEFT ROTATION - TAPER DIN238

Articolo	D	A	H	B
CP13S.B16	1- 13	50,5	90	B16
CP16S.B16	2,5- 16	57	100	B16

FORNITI SENZA CHIAVE
SUPPLIED WITHOUT WRENCH



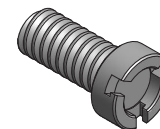
SET DI 3 GIRFFE DI RICAMBIO RIVESTITE IN TITANIO
SET OF 3 TITANIUM COATED JAWS

Articolo
GF.CP8S
GF.CP13S-16S



VITI PER GIRFFE
JAWS SCREWS

Articolo
VT.CP8S
VT.CP13S-16S

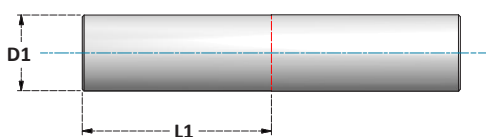


PIGNONE DI RICAMBIO
BEVEL GEAR

Articolo
PG.CP13-16

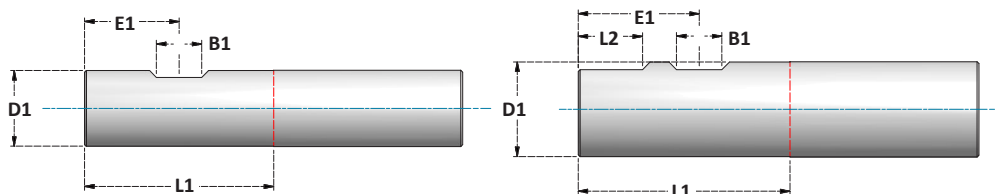
ACCESSORI - ACCESSORIES



**PORTAUTENSILI CON ATTACCO CILINDRICO***CYLINDRICAL SHANK TOOLHOLDERS***DIN 1835-1 FORM A**

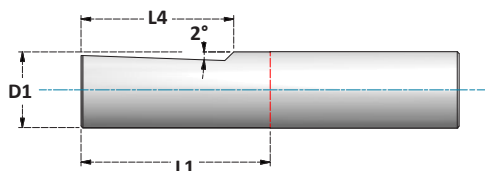
ATTACCO / SHANK	D1	L1
	h6	min.
D6	6	36
D8	8	36
D10	10	40
D12	12	45
D16	16	48
D20	20	50

ATTACCO / SHANK	D1	L1
	h6	min.
D25	25	56
D32	32	60
D40	40	70
D50	50	80

PORTAUTENSILI CON ATTACCO WELDON*WELDON SHANK TOOLHOLDERS***DIN 1835-1 FORM B**

ATTACCO / SHANK	D1	L1	B1	E1
	h6	+2 -0	+0,05 -0	+0 -1
WE6	6	36	4,2	18
WE8	8	36	5,5	18
WE10	10	40	7	20
WE12	12	45	8	22,5
WE16	16	48	10	24
WE20	20	50	11	25

ATTACCO / SHANK	D1	L1	B1	E1	L2
	h6	+2 -0	+0,05 -0	+0 -1	+1 -0
WE25	25	56	12	32	17
WE32	32	60	14	36	19
WE40	40	70	14	40	19
WE50	50	80	18	45	23

PORTAUTENSILI CON ATTACCO WHISTLE NOTCH*WHISTLE NOTCH SHANK TOOLHOLDERS***DIN 1835-1 FORM E**

ATTACCO / SHANK	D1	L1	L4
	h6	+2 -0	+0 -1
WHN6	6	36	25
WHN8	8	36	25
WHN10	10	40	28
WHN12	12	45	33

ATTACCO / SHANK	D1	L1	L4
	h6	+2 -0	+0 -1
WHN16	16	48	36
WHN20	20	50	38
WHN25	25	56	44
WHN32	32	60	48

