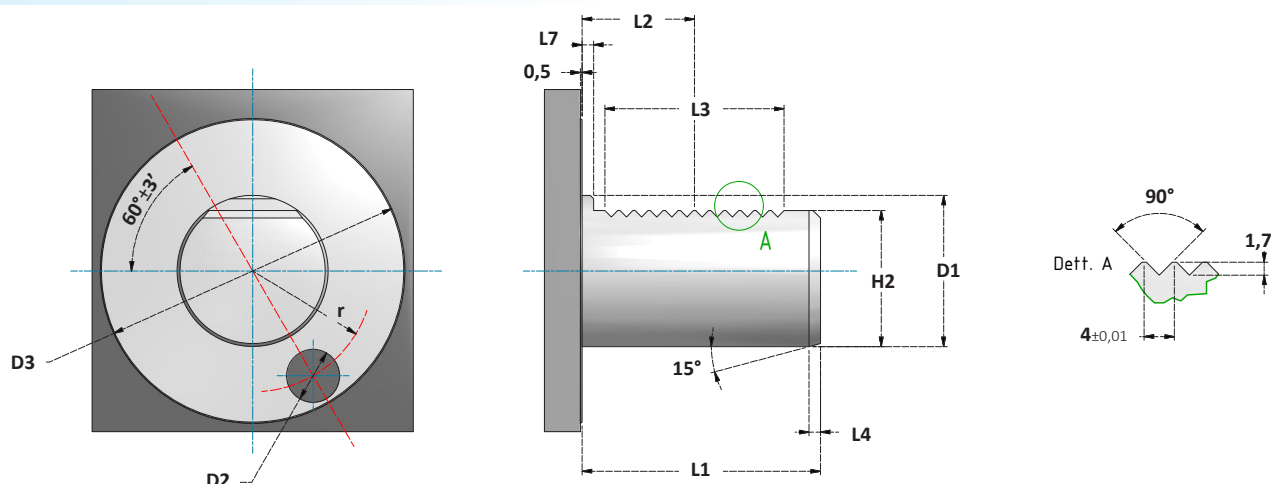
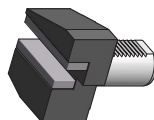


**MANDRINI VDI**
VDI TOOLHOLDERS**DIMENSIONI**
DIMENSIONS

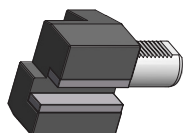
VDI	D1	D2	D3	L1	L2	L3	L4	L7	H2	r
	h6	H8		±0,3	±0,05	min	$\begin{smallmatrix} +1 \\ 0 \end{smallmatrix}$		±0,1	±0,02
30	30	14	68	55	29,7	40	2	7	27	25
40	40	14	83	63	29,7	40	3	7	36	32
50	50	16	98	78	35,7	48	3	8	45	37
60	60	16	123	94	43,7	56	4	10	55	48

**PORTAUTENSILI VDI FORMA A**
VDI TOOLHOLDERS FORM A

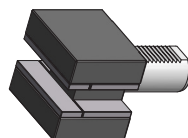
PAG. 171

**PORTAUTENSILI VDI FORMA B**
VDI TOOLHOLDERS FORM B

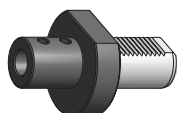
PAG. 172

**PORTAUTENSILI VDI FORMA C**
VDI TOOLHOLDERS FORM C

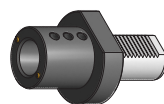
PAG. 174

**PORTAUTENSILI VDI FORMA D**
VDI TOOLHOLDERS FORM D

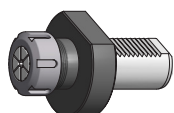
PAG. 175

**PORTAUTENSILI VDI FORMA E1**
VDI TOOLHOLDERS FORM E1

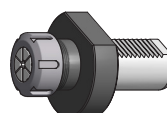
PAG. 176

**PORTAUTENSILI VDI FORMA E2**
VDI TOOLHOLDERS FORM E2

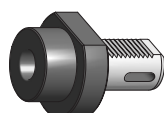
PAG. 177

**PORTAUTENSILI VDI FORMA E3**
VDI TOOLHOLDERS FORM E3

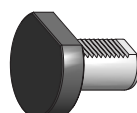
PAG. 178

**PORTAUTENSILI VDI FORMA E4**
VDI TOOLHOLDERS FORM E4

PAG. 179

**PORTAUTENSILI VDI FORMA F**
VDI TOOLHOLDERS FORM F

PAG. 180

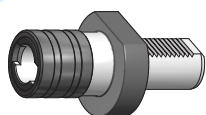
**PORTAUTENSILI VDI FORMA Z**
VDI TOOLHOLDERS FORM Z

PAG. 180



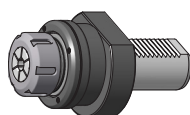


DIN ISO 10889 (DIN69880) - VDI



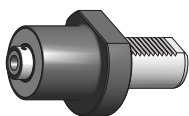
MASCHIATORI
TAPPING CHUCKS

PAG. 181



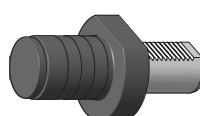
PORTA ALESATORI OSCILLANTI
FLOATING REAMER HOLDERS

PAG. 182



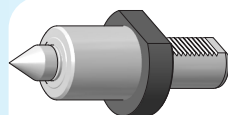
BROCCIATORI
BROACHING TOOLHOLDERS

PAG. 182



FERMI BARRA
STOP SHOCK ABSORBERS

PAG. 183



CONTROPUNTE ROTANTI
LIVE CENTRES

PAG. 183

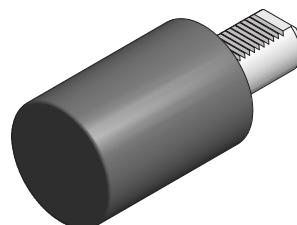
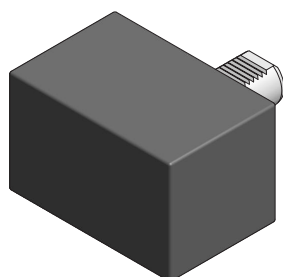
DIN ISO 10889-2

VDI

A

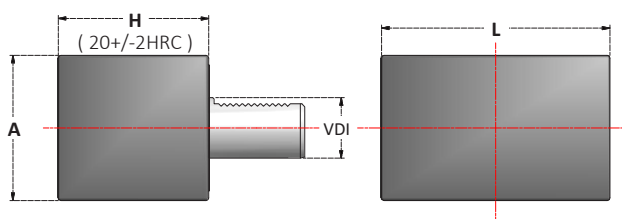
FORM A

PORTAUTENSILI VDI LAVORABILI
MACHINABLE VDI TOOLHOLDERS



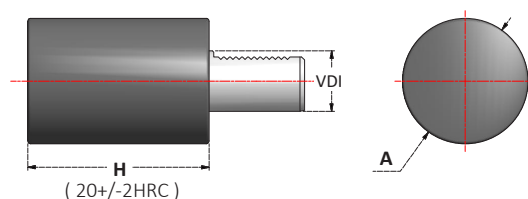
PORTAUTENSILI LAVORABILI RETTANGOLARI
RECTANGULAR BLANK TOOLHOLDERS

Articolo	VDI	H	A	L
VDI30.A1	30	85	76	130
VDI40.A1	40	100	96	151
VDI50.A1	50	125	120	160
VDI60.A1	60	160	125	165



PORTAUTENSILI LAVORABILI ROTONDI
ROUND BLANK TOOLHOLDERS

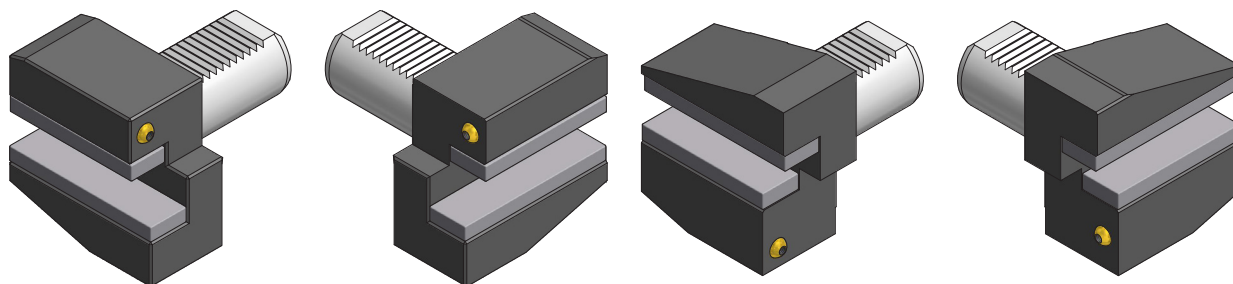
Articolo	VDI	H	A
VDI30.A2	30	100	68
VDI40.A2	40	120	83
VDI50.A2	50	135	98
VDI60.A2	60	150	123





PORTAUTENSILI VDI CON SEDE TRASVERSALE

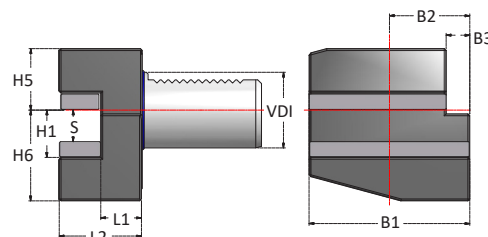
RADIAL VDI TOOLHOLDERS



PORTAUTENSILI VDI FORMA B1 - DESTRI - CORTI

VDI TOOLHOLDERS FORM B1 - RIGHT - SHORT

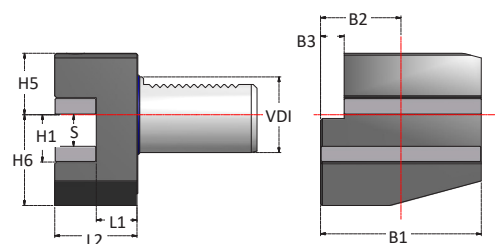
Articolo	VDI	H1	S	H5	H6	L1	L2	B1	B2	B3
VDI30.B1	30	20	16	28	38	22	40	70	35	10
VDI40.B1	40	25	20	32,5	48	22	44	85	42,5	12,5
VDI50.B1	50	32	25	35	60	30	55	100	50	16
VDI60.B1	60	32	25	42,5	62,5	30	60	125	62,5	16



PORTAUTENSILI VDI FORMA B2 - SINISTRI - CORTI

VDI TOOLHOLDERS FORM B2 - LEFT - SHORT

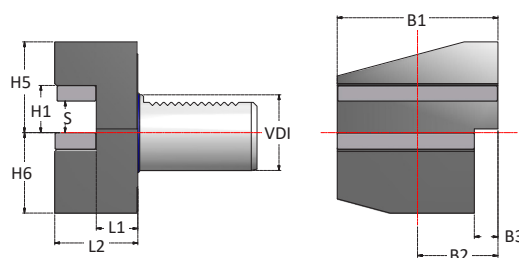
Articolo	VDI	H1	S	H5	H6	L1	L2	B1	B2	B3
VDI30.B2	30	20	16	28	38	22	40	70	35	10
VDI40.B2	40	25	20	32,5	48	22	44	85	42,5	12,5
VDI50.B2	50	32	25	35	60	30	55	100	50	16
VDI60.B2	60	32	25	42,5	62,5	40	60	125	62,5	16



PORTAUTENSILI VDI FORMA B3 - ROVESCIA TI DESTRI - CORTI

VDI TOOLHOLDERS FORM B3 - OVERHEAD RIGHT - SHORT

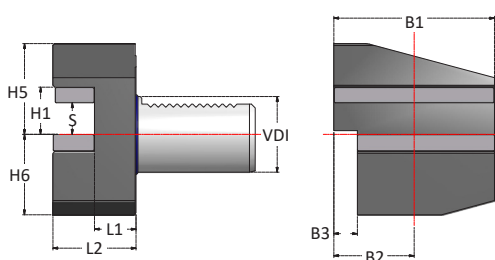
Articolo	VDI	H1	S	H5	H6	L1	L2	B1	B2	B3
VDI30.B3	30	20	16	28	38	22	40	70	35	10
VDI40.B3	40	25	20	32,5	48	22	44	85	42,5	12,5
VDI50.B3	50	32	25	35	60	30	55	100	50	16
VDI60.B3	60	32	25	42,5	62,5	40	60	125	62,5	16



PORTAUTENSILI VDI FORMA B4 - ROVESCIA TI SINISTRI - CORTI

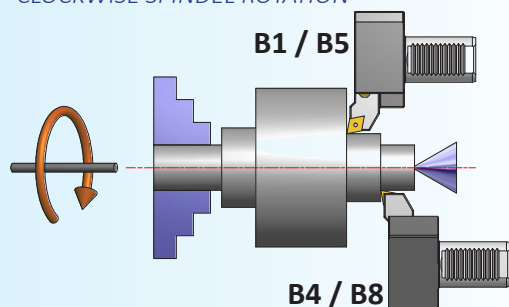
VDI TOOLHOLDERS FORM B4 - OVERHEAD LEFT - SHORT

Articolo	VDI	H1	S	H5	H6	L1	L2	B1	B2	B3
VDI30.B4	30	20	16	28	38	22	40	70	35	10
VDI40.B4	40	25	20	32,5	48	22	44	85	42,5	12,5
VDI50.B4	50	32	25	35	60	30	55	100	50	16
VDI60.B4	60	32	25	42,5	62,5	40	60	125	62,5	16



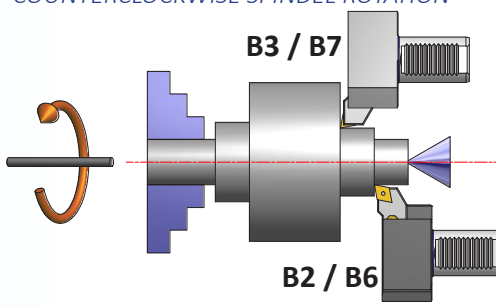
ROTAZIONE ORARIA DEL MANDRINO

CLOCKWISE SPINDEL ROTATION



ROTAZIONE ANTIORARIA DEL MANDRINO

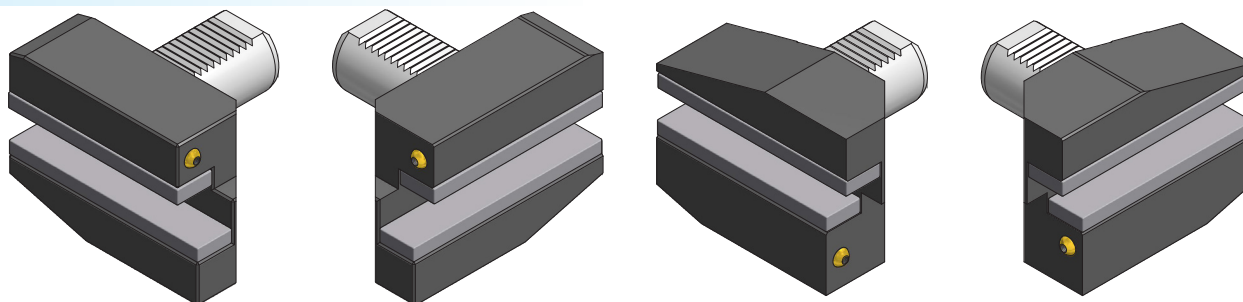
COUNTERCLOCKWISE SPINDEL ROTATION





PORTAUTENSILI VDI CON SEDE TRASVERSALE

RADIAL VDI TOOLHOLDERS



PORTAUTENSILI VDI FORMA B5 - DESTRI - LUNGHI

VDI TOOLHOLDERS FORM B5 - RIGHT - LONG

Articolo	VDI	H1	S	H5	H6	L1	L2	B1	B2	B3
VDI30.B5	30	20	16	28	38	22	40	100	65	10
VDI40.B5	40	25	20	32,5	48	22	44	118	75,5	12,5
VDI50.B5	50	32	25	35	60	30	55	130	80	16
VDI60.B5	60	32	25	42,5	62,5	40	60	145	82,5	16

PORTAUTENSILI VDI FORMA B6 - SINISTRI - LUNGHI

VDI TOOLHOLDERS FORM B6 - LEFT - LONG

Articolo	VDI	H1	S	H5	H6	L1	L2	B1	B2	B3
VDI30.B6	30	20	16	28	38	22	40	100	65	10
VDI40.B6	40	25	20	32,5	48	22	44	118	75,5	12,5
VDI50.B6	50	32	25	35	60	30	55	130	80	16
VDI60.B6	60	32	25	42,5	62,5	40	60	145	82,5	16

PORTAUTENSILI VDI FORMA B7 - ROVESCIA TI DESTRI - LUNGHI

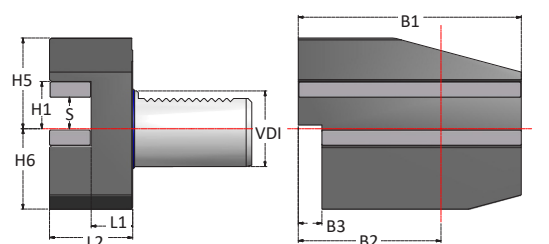
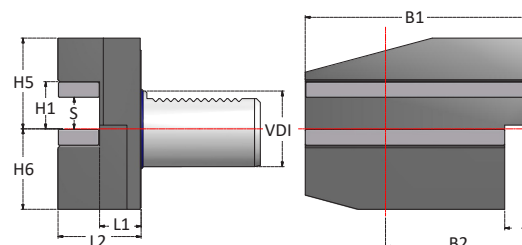
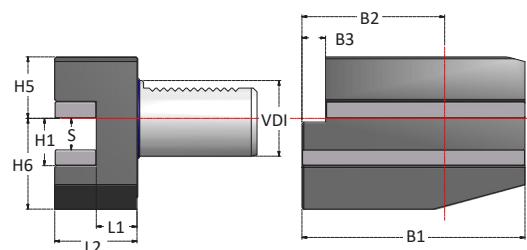
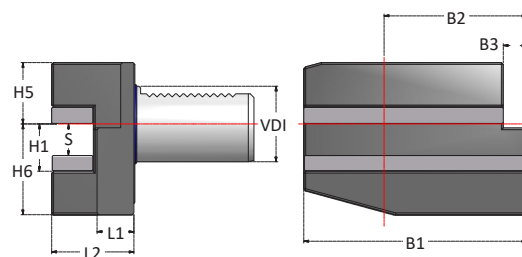
VDI TOOLHOLDERS FORM B7 - OVERHEAD RIGHT - LONG

Articolo	VDI	H1	S	H5	H6	L1	L2	B1	B2	B3
VDI30.B7	30	20	16	28	38	22	40	100	65	10
VDI40.B7	40	25	20	32,5	48	22	44	118	75,5	12,5
VDI50.B7	50	32	25	35	60	30	55	130	80	16
VDI60.B7	60	32	25	42,5	62,5	40	60	145	82,5	16

PORTAUTENSILI VDI FORMA B8 - ROVESCIA TI SINISTRI - LUNGHI

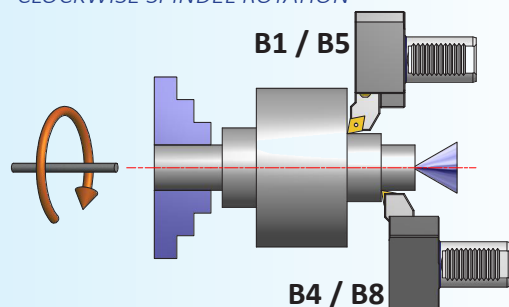
VDI TOOLHOLDERS FORM B8 - OVERHEAD LEFT - LONG

Articolo	VDI	H1	S	H5	H6	L1	L2	B1	B2	B3
VDI30.B8	30	20	16	28	38	22	40	100	65	10
VDI40.B8	40	25	20	32,5	48	22	44	118	75,5	12,5
VDI50.B8	50	32	25	35	60	30	55	130	80	16
VDI60.B8	60	32	25	42,5	62,5	40	60	145	82,5	16



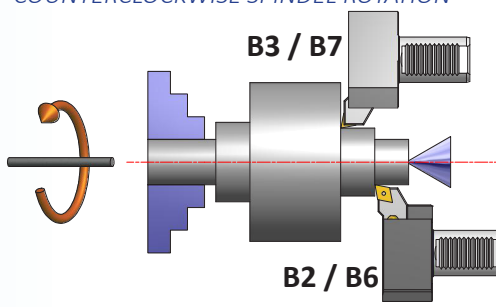
ROTAZIONE ORARIA DEL MANDRINO

CLOCKWISE SPINDEL ROTATION



ROTAZIONE ANTIORARIA DEL MANDRINO

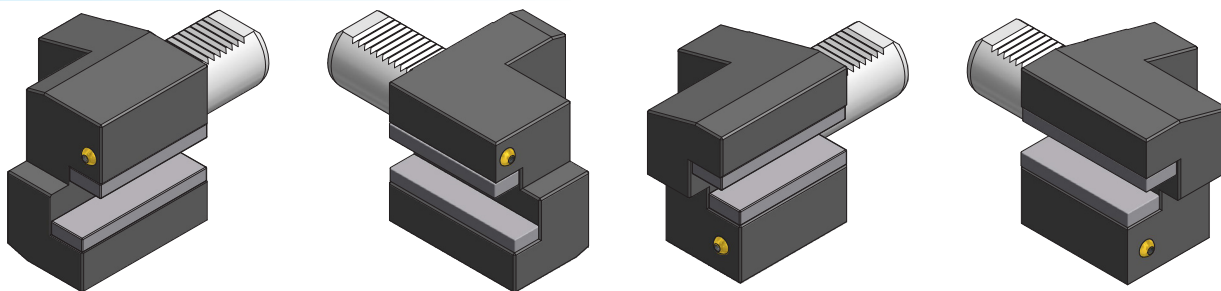
COUNTERCLOCKWISE SPINDEL ROTATION





PORTAUTENSILI VDI CON SEDE LONGITUDINALE

AXIAL VDI TOOLHOLDERS



PORTAUTENSILI VDI FORMA C1 - DESTRI

VDI TOOLHOLDERS FORM C1 - RIGHT

Articolo	VDI	H1	S	H5	H6	L1	L2	B1	B2	B3
VDI30.C1	30	20	16	28	38	70	10	70	35	17
VDI40.C1	40	25	20	32,5	48	85	12,5	85	42,5	21
VDI50.C1	50	32	25	35	60	100	16	100	50	26
VDI60.C1	60	32	25	42,5	62,5	125	16	125	62,5	33

PORTAUTENSILI VDI FORMA C2 - SINISTRI

VDI TOOLHOLDERS FORM C2 - LEFT

Articolo	VDI	H1	S	H5	H6	L1	L2	B4	B5	B6
VDI30.C2	30	20	16	28	38	70	10	76	41	23
VDI40.C2	40	25	20	32,5	48	85	12,5	90	47,5	25,5
VDI50.C2	50	32	25	35	60	100	16	105	55	30,5
VDI60.C2	60	32	25	42,5	62,5	125	16	125	62,5	33

PORTAUTENSILI VDI FORMA C3 - ROVESCIA TI DESTRI

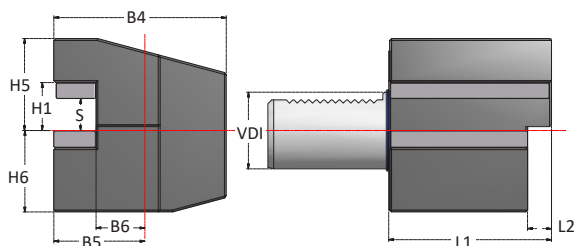
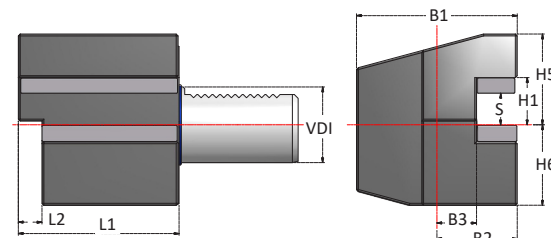
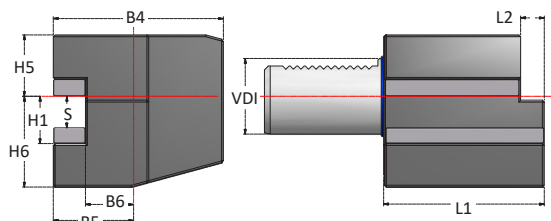
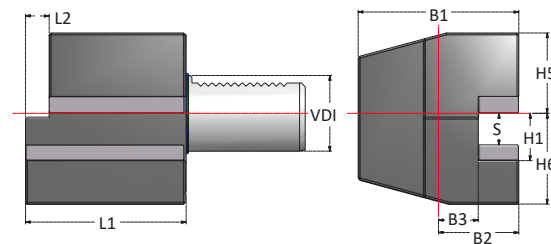
VDI TOOLHOLDERS FORM C3 - OVERHEAD RIGHT

Articolo	VDI	H1	S	H5	H6	L1	L2	B1	B2	B3
VDI30.C3	30	20	16	28	38	70	10	70	35	17
VDI40.C3	40	25	20	32,5	48	85	12,5	85	42,5	21
VDI50.C3	50	32	25	35	60	100	16	100	50	26
VDI60.C3	60	32	25	42,5	62,5	125	16	125	62,5	33

PORTAUTENSILI VDI FORMA C4 - ROVESCIA TI SINISTRI

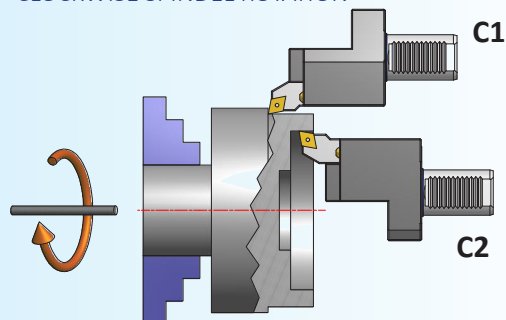
VDI TOOLHOLDERS FORM C4 - OVERHEAD LEFT

Articolo	VDI	H1	S	H5	H6	L1	L2	B4	B5	B6
VDI30.C4	30	20	16	28	38	70	10	76	41	23
VDI40.C4	40	25	20	32,5	48	85	12,5	90	47,5	25,5
VDI50.C4	50	32	25	35	60	100	16	105	55	30,5
VDI60.C4	60	32	25	42,5	62,5	125	16	125	62,5	33



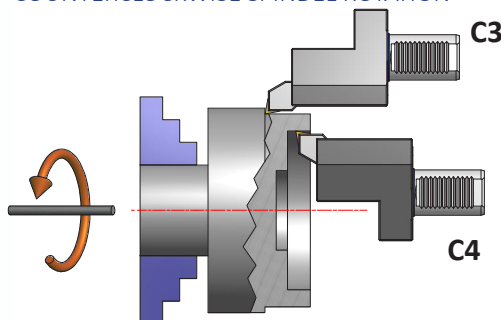
ROTAZIONE ORARIA DEL MANDRINO

CLOCKWISE SPINDEL ROTATION



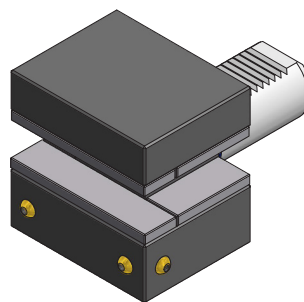
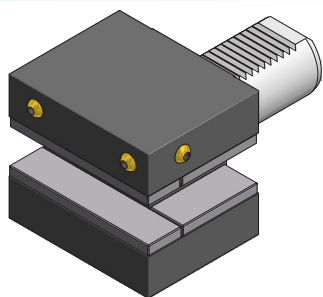
ROTAZIONE ANTIORARIA DEL MANDRINO

COUNTERCLOCKWISE SPINDEL ROTATION





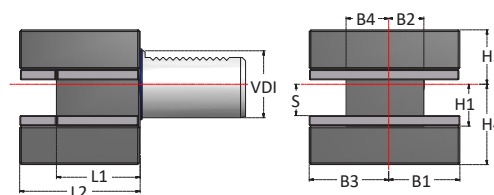
PORTAUTENSILI VDI A PIU' SEDI VDI TOOLHOLDERS WITH MULTIPLE SEATS



PORTAUTENSILI VDI FORMA D1

VDI TOOLHOLDERS FORM D1

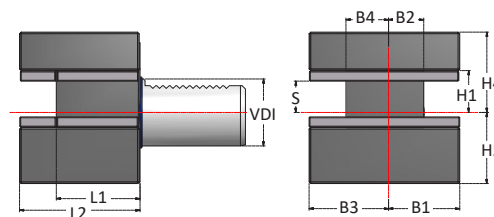
Articolo	VDI	H1	S	H3	H4	L1	L2	B1	B2	B3	B4
VDI30.D1	30	20	16	28	38	42	60	35	17	41	23
VDI40.D1	40	25	20	32,5	48	50	72	42,5	21	47,5	25,5
VDI50.D1	50	32	25	35	60	60	85	50	26	55	30,5
VDI60.D1	60	32	25	42,5	62,5	85	110	57,5	33	57,5	33



PORTAUTENSILI VDI FORMA D2

VDI TOOLHOLDERS FORM D2

Articolo	VDI	H1	S	H4	H5	L1	L2	B1	B2	B3	B4
VDI30.D2	30	20	16	38	35	42	60	35	17	41	23
VDI40.D2	40	25	20	48	42,5	50	72	42,5	21	47,5	25,5
VDI50.D2	50	32	25	60	50	60	85	50	26	55	30,5
VDI60.D2	60	32	25	62,5	62,5	85	110	57,5	33	57,5	33



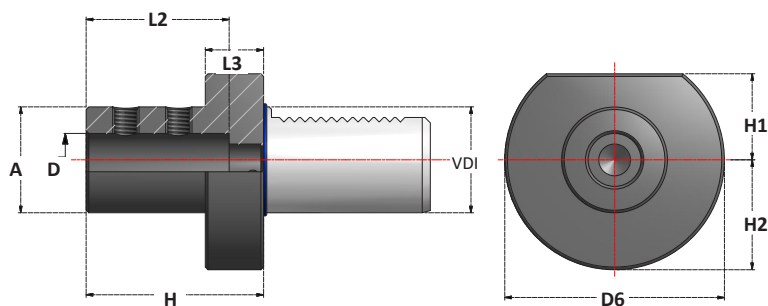
ACCESSORI - ACCESSORIES



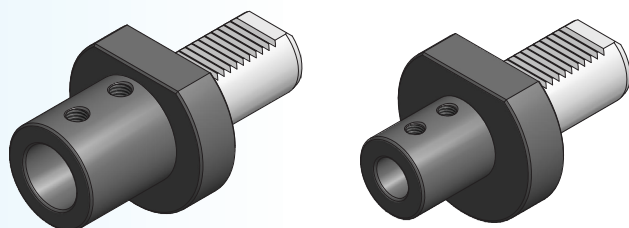
P. 315

SUPPORTI DI MONTAGGIO
ASSEMBLY DEVICES



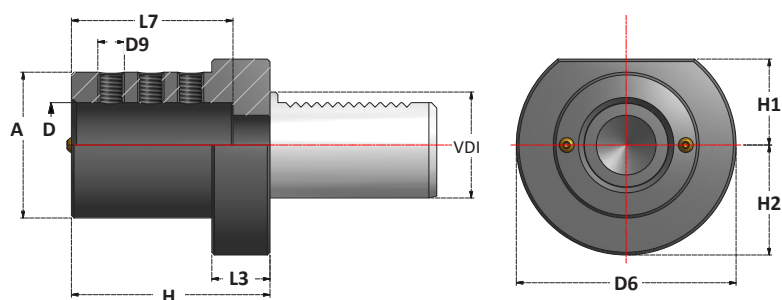
**PORTAUTENSILI VDI PER PUNTE A INSERTI**
VDI TOOLHOLDERS FOR INDEXABLE INSERT DRILLS

Articolo	VDI	D	A	H	L2	L3	D6	H1	H2
VDI30.E1-16	30	16	36	67	54	22	68	28	30
VDI30.E1-20	30	20	40	67	54	22	68	28	30
VDI30.E1-25	30	25	45	71	59	22	68	28	30
VDI30.E1-32	30	32	52	75	63	22	68	28	30
VDI30.E1-40	30	40	65	90	72	22	68	28	30
VDI40.E1-16	40	16	36	67	54	22	83	32,5	/
VDI40.E1-20	40	20	40	67	54	22	83	32,5	/
VDI40.E1-25	40	25	45	75	59	22	83	32,5	/
VDI40.E1-32	40	32	52	75	63	22	83	32,5	/
VDI40.E1-40	40	40	65	90	73	22	83	32,5	/
VDI40.E1-50	40	50	70	100	83	22	83	32,5	/
VDI50.E1-16	50	16	36	80	54	30	98	35	/
VDI50.E1-20	50	20	40	80	54	30	98	35	/
VDI50.E1-25	50	25	45	80	59	30	98	35	/
VDI50.E1-32	50	32	52	80	63	30	98	35	/
VDI50.E1-40	50	40	65	90	73	30	98	35	/
VDI50.E1-50	50	50	75	100	83	30	98	35	/
VDI60.E1-16	60	16	36	80	54	30	123	42,5	/
VDI60.E1-20	60	20	40	80	54	30	123	42,5	/
VDI60.E1-25	60	25	45	80	59	30	123	42,5	/
VDI60.E1-32	60	32	52	80	63	30	123	42,5	/
VDI60.E1-40	60	40	65	90	73	30	123	42,5	/
VDI60.E1-50	60	50	75	100	83	30	123	42,5	/



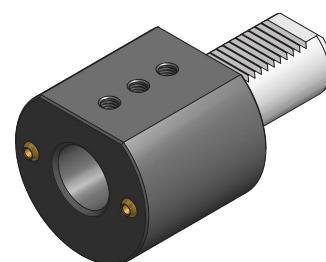
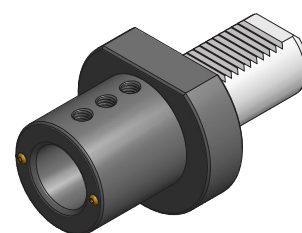
ACCESSORI - ACCESSORIES

**P. 315**SUPPORTI DI MONTAGGIO
ASSEMBLY DEVICES

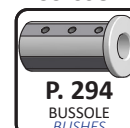
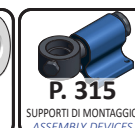
**PORTAUTENSILI VDI PER BARENI**
VDI BORING BAR TOOLHOLDERS

Articolo	VDI	D	A	H	L3	L7	D6	D9	H1	H2	
VDI30.E2-6	*	30	6	55	60	22	51	68	M6	28	30
VDI30.E2-8	*	30	8	55	60	22	51	68	M6	28	30
VDI30.E2-10	*	30	10	55	60	22	51	68	M8	28	30
VDI30.E2-12	*	30	12	55	60	22	51	68	M8	28	30
VDI30.E2-16	*	30	16	55	60	22	51	68	M8	28	30
VDI30.E2-20		30	20	55	60	22	51	68	M8	28	30
VDI30.E2-25		30	25	55	60	22	51	68	M8	28	30
VDI30.E2-32		30	32	68	75	22	61	68	M8	28	30
VDI30.E2-40		30	40	68	75	22	61	68	M8	28	30
VDI40.E2-6	*	40	6	55	75	22	43	83	M6	32,5	/
VDI40.E2-8	*	40	8	55	75	22	43	83	M6	32,5	/
VDI40.E2-10	*	40	10	55	75	22	43	83	M8	32,5	/
VDI40.E2-12	*	40	12	55	75	22	58	83	M8	32,5	/
VDI40.E2-16	*	40	16	55	75	22	61	83	M10	32,5	/
VDI40.E2-20	*	40	20	55	75	22	61	83	M10	32,5	/
VDI40.E2-25		40	25	55	75	22	61	83	M10	32,5	/
VDI40.E2-32		40	32	83	75	22	61	83	M10	32,5	/
VDI40.E2-40		40	40	83	90	22	76	83	M10	32,5	/
VDI40.E2-50		40	50	83	90	22	76	83	M10	32,5	/
VDI50.E2-8	*	50	8	68	90	30	71	98	M6	35	/
VDI50.E2-10	*	50	10	68	90	30	71	98	M8	35	/
VDI50.E2-12	*	50	12	68	90	30	71	98	M8	35	/
VDI50.E2-16	*	50	16	68	90	30	76	98	M10	35	/
VDI50.E2-20	*	50	20	68	90	30	76	98	M12	35	/
VDI50.E2-25	*	50	25	68	90	30	76	98	M12	35	/
VDI50.E2-32		50	32	68	90	30	76	98	M12	35	/
VDI50.E2-40		50	40	98	90	30	76	98	M12	35	/
VDI50.E2-50		50	50	98	90	30	76	98	M12	35	/
VDI60.E2-16	*	60	16	68	90	30	76	123	M10	42,5	/
VDI60.E2-20	*	60	20	68	90	30	76	123	M12	42,5	/
VDI60.E2-25	*	60	25	68	90	30	76	123	M12	42,5	/
VDI60.E2-32	*	60	32	68	90	30	76	123	M12	42,5	/
VDI60.E2-40		60	40	98	90	30	76	123	M12	42,5	/
VDI60.E2-50		60	50	98	90	30	86	123	M12	42,5	/

* Foro passante con tappo filettato e seeger
Through hole with threaded cap and seeger

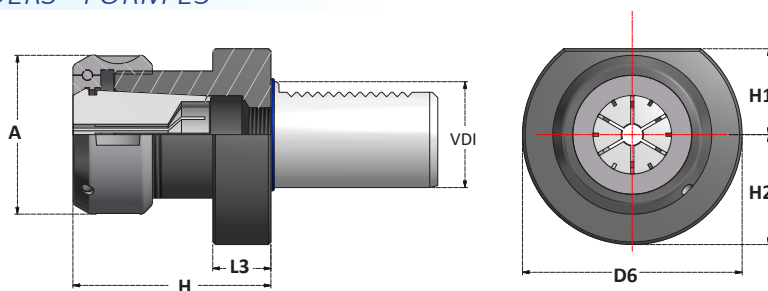


ACCESSORI - ACCESSORIES

P. 294
BUSSOLE
BUSHESP. 315
SUPPORTI DI MONTAGGIO
ASSEMBLY DEVICES

**PORTAUTENSILI VDI - FORMA E3**

VDI TOOLHOLDERS - FORM E3

**PORTAPINZE DIN6388**

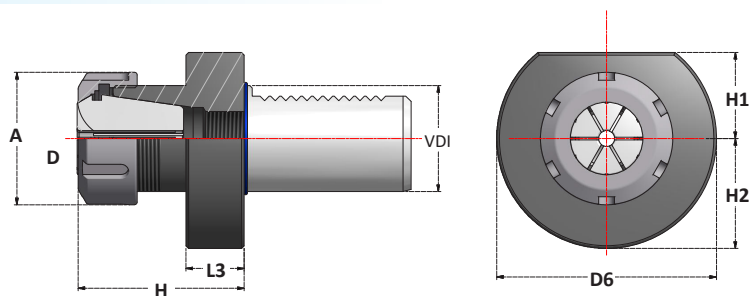
DIN6388 COLLETS CHUCKS

Articolo	VDI	A	H	L3	D6	H1	H2	Collets Range	Ghiera Nut
VDI30.E3.EOC25	30	60	75	22	68	28	30	2÷25	G25OCC
VDI30.E3.EOC32	30	72	90	22	68	28	30	3÷32	G32OCC
VDI40.E3.EOC25	40	60	75	22	83	32,5	/	2÷25	G25OCC
VDI40.E3.EOC32	40	72	90	22	83	32,5	/	3÷32	G32OCC
VDI50.E3.EOC25	50	60	75	30	98	35	/	2÷25	G25OCC
VDI50.E3.EOC32	50	72	90	30	98	35	/	3÷32	G32OCC
VDI60.E3.EOC25	60	60	75	30	123	42,5	/	2÷25	G25OCC
VDI60.E3.EOC32	60	72	90	30	123	42,5	/	3÷32	G32OCC

ACCESSORI - ACCESSORIES**P. 270**
PINZE
COLLETS**P. 287**
GHIERE
NUTS**P. 315**
SUPPORTI DI MONTAGGIO
ASSEMBLY DEVICES**P. 289**
CHIAVI
WRENCHES

**PORTAUTENSILI VDI - FORMA E4**

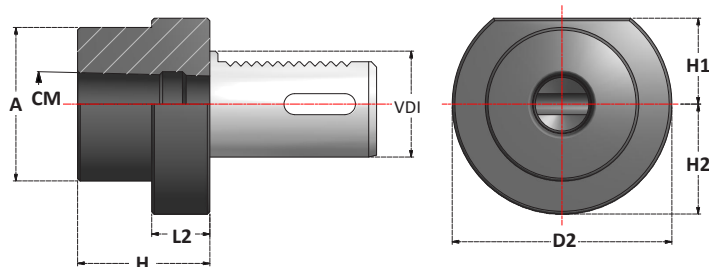
VDI TOOLHOLDERS - FORM E4

**PORTAPINZE DIN6499**

DIN6499 COLLETS CHUCKS

Articolo	VDI	A	H	H1	H2	D6	L3	Collets Range	Ghiera Nut
VDI30.E4.ERC16	30	28	44	28	30	68	22	1÷10	G16SE
VDI30.E4.ERC25	30	42	57	28	30	68	22	1÷20	G25S
VDI30.E4.ERC32	30	50	62	28	30	68	22	2÷22	G32S
VDI30.E4.ERC40	30	63	72	28	30	68	22	3÷30	G40S
VDI40.E4.ERC25	40	42	62	32,5	/	83	22	1÷20	G25S
VDI40.E4.ERC32	40	50	62	32,5	/	83	22	2÷22	G32S
VDI40.E4.ERC40	40	63	75	32,5	/	83	22	3÷30	G40S
VDI50.E4.ERC25	50	42	57	35	/	98	30	1÷20	G25S
VDI50.E4.ERC32	50	50	75	35	/	98	30	2÷22	G32S
VDI50.E4.ERC40	50	63	75	35	/	98	30	3÷30	G40S
VDI60.E4.ERC32	60	50	75	42,5	/	123	30	2÷22	G32S
VDI60.E4.ERC40	60	63	75	42,5	/	123	30	3÷30	G40S

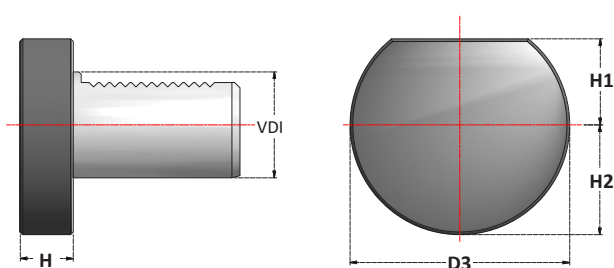
ACCESSORI - ACCESSORIES**P. 250**
PINZE
COLLETS**P. 280**
GHIERE
NUTS**P. 315**
SUPPORTI DI MONTAGGIO
ASSEMBLY DEVICES**P. 288**
CHIAVI
WRENCHES

**PORTAUTENSILI VDI - FORMA F**
VDI TOOLHOLDERS - FORM F**PORTAUTENSILI CON SEDE CONO MORSE**

MORSE TAPER TOOLHOLDERS

Articolo	VDI	CM	A	H	L2	D2	H1	H2
VDI30.F.CM1P	30	1	/	27	-	68	28	30
VDI30.F.CM2P	30	2	55	36	27	68	28	30
VDI30.F.CM3P	30	3	55	66	41	68	28	30
VDI40.F.CM1P	40	1	55	23	22	83	32,5	/
VDI40.F.CM2P	40	2	55	36	22	83	32,5	/
VDI40.F.CM3P	40	3	58	36	22	83	32,5	/
VDI40.F.CM4P	40	4	68	80	22	83	32,5	/
VDI50.F.CM2P	50	2	55	36	30	98	35	/
VDI50.F.CM3P	50	3	58	45	30	98	35	/
VDI50.F.CM4P	50	4	68	55	30	98	35	/
VDI50.F.CM5P	50	5	75	72	30	98	35	/
VDI60.F.CM2P	60	2	55	35	30	123	42,5	/
VDI60.F.CM3P	60	3	58	45	30	123	42,5	/
VDI60.F.CM4P	60	4	68	55	30	123	42,5	/
VDI60.F.CM5P	60	5	98	64	30	123	42,5	/

ACCESSORI - ACCESSORIES

**TAPPI DI PROTEZIONE VDI - FORMA Z**
VDI PROTECTION PLUGS - FORM Z**TAPPI DI PROTEZIONE VDI IN ACCIAIO**

STEEL VDI PROTECTION PLUGS

Articolo	VDI	H	D3	H1	H2
VDI30.Z2.A	30	16	68	28	30
VDI40.Z2.A	40	20	83	32,5	/
VDI50.Z2.A	50	20	98	35	/
VDI60.Z2.A	60	20	123	42,5	/

TAPPI DI PROTEZIONE VDI IN PLASTICA

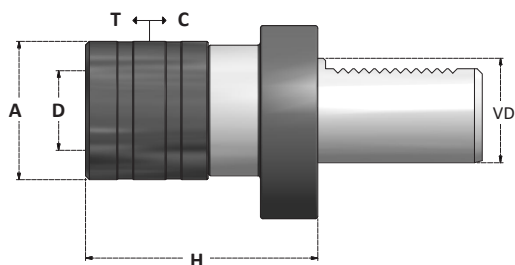
PLASTIC VDI PROTECTION PLUGS

Articolo	VDI	H	D3	H1	H2
VDI30.Z2.P	30	16	68	28	30
VDI40.Z2.P	40	20	83	32,5	/
VDI50.Z2.P	50	20	98	35	/
VDI60.Z2.P	60	20	123	42,5	/





MASCHIATORI A CAMBIO RAPIDO CON COMPENSAZIONE ASSIALE QUICK CHANGE TAPPING CHUCKS WITH AXIAL COMPENSATION



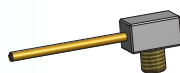
SCHEDA TECNICA
TECHNICAL DATA
MCR | P. 352

Corsa di compressione: **C**
Compression stroke:

Corsa di trazione: **T**
Extension stroke:

Articolo	VDI	H
VDI30.MCR1TC	30	61
VDI30.MCR2TC	30	84
VDI40.MCR1TC	40	55
VDI40.MCR2TC	40	77
VDI40.MCR3TC	40	123
VDI50.MCR1TC	50	55
VDI50.MCR2TC	50	79
VDI50.MCR3TC	50	110

	Bussola Adapter	D	Tapping Range	A	T	C
..MCR1TC	B1 / BF1	19	M2÷M14	36	7,5	7,5
..MCR2TC	B2 / BF2	31	M6÷M27	53	12,5	12,5
..MCR3TC	B3 / BF3	48	M14÷M45	78	20	20



Fornito con accessorio per refrigerazione esterna
Supplied with pipe for external coolant

ACCESSORI - ACCESSORIES



P. 336
MASCHI
TAPS

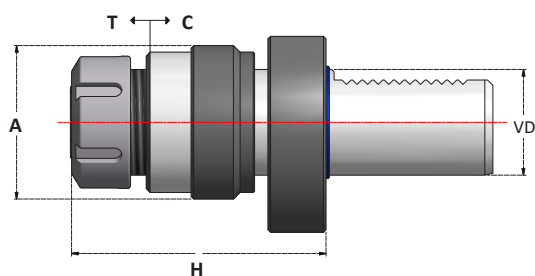


P. 315
SUPPORTI DI MONTAGGIO
ASSEMBLY DEVICES



P. 298
INSERZIONI
ADAPTERS

PORTAMASCHI CON COMPENSAZIONE ASSIALE - PORTAPINZA ER TAPPING CHUCKS WITH AXIAL COMPENSATION - ER COLLET CHUCKS



Corsa di compressione: **C**
Compression stroke:

Corsa di trazione: **T**
Extension stroke:

Articolo	VDI	H
VDI30.ERC25TC	30	84
VDI30.ERC32TC	30	94
VDI40.ERC25TC	40	86
VDI40.ERC32TC	40	94

Articolo	A	T	C	Tapping Range	Collets Range	Ghiera Nut
ERC25TC	58	12	4	M3 ÷ M20	3,5 ÷ 16	G25S
ERC32TC	58	12	4	M3 ÷ M27	3,5 ÷ 20	G32S



Fornito con accessorio per refrigerazione esterna
Supplied with pipe for external coolant

ACCESSORI - ACCESSORIES



P. 265
PINZE CON QUADRO
COLLETS WITH SQUARE



P. 280
GHIERE
NUTS



P. 336
MASCHI
TAPS

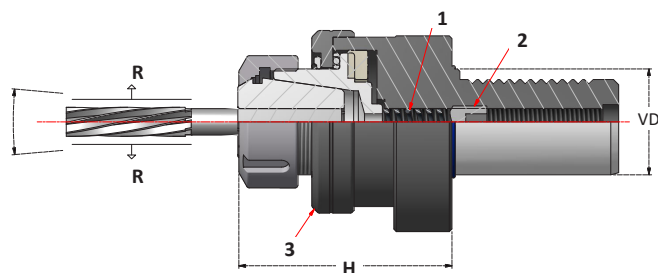


P. 315
SUPPORTI DI MONTAGGIO
ASSEMBLY DEVICES



P. 288
CHIAVI
WRENCHES

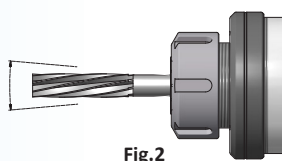


**PORTA ALESATORI FLOTTANTI CON PASSAGGIO DEL REFRIGERANTE**
FLOATING REAMER HOLDERS WITH COOLANT FLOW

SCHEDA TECNICA
TECHNICAL DATA
RM | P. 354

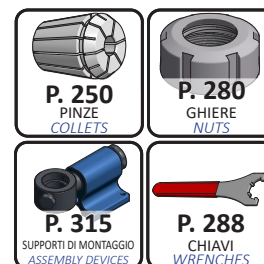
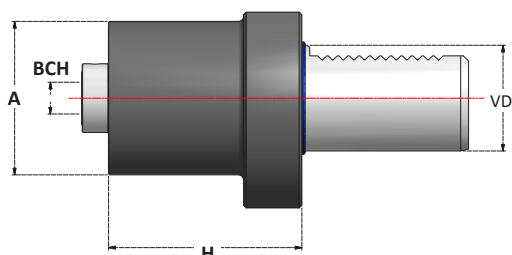
Movimento radiale:
Radial stroke: **R**

Articolo	VDI	H
VDI30.RM25	30	64
VDI30.RM32	30	68
VDI40.RM32	40	74
VDI40.RM40	40	74

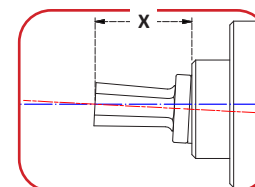


Articolo	R	Collets Range	Ghiera Nut
...RM25	± 1 mm	1÷20	G25S
...RM32	± 1,5 mm	2÷22	G32S
...RM40	± 1,5 mm	3÷30	G40S

- La spinta della molla **1** mantiene l'utensile centrato anche in posizione orizzontale.
- La vite **2** regola la pressione della molla per regolare il movimento radiale.
- Allentando di 0,1/0,2mm la ghiera **3** si permette all'alesatore di avere un movimento pendolare. (Fig2)
- *Pressure of spring 1 keeps reamer centered, even in the horizontal position.*
- *Screw 2 allows adjustment of floating level.*
- *Unscrewing nut 3 for 0,1/0,2mm reamer has a pendulum float. (Fig 2)*

ACCESSORI - ACCESSORIES**BROCCIATORI**
BROACHING TOOLHOLDERS

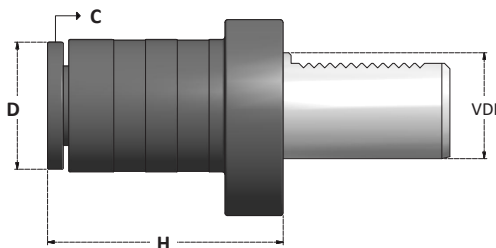
SCHEDA TECNICA
TECHNICAL DATA
BCH | P. 355



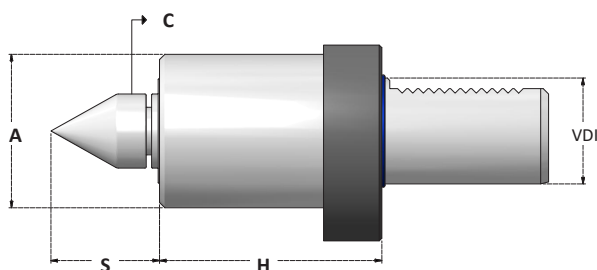
Utilizzare solo con brocche con lunghezza X
Use only broaches with lengths X

Articolo	VDI	BCH	X	H	A
VDI30.BCH12	30	12	25	66	58
VDI30.BCH16	30	16	40	66	58
VDI40.BCH12	40	12	25	67	58
VDI40.BCH16	40	16	40	83	58

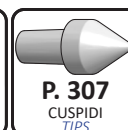
ACCESSORI - ACCESSORIES

**FERMI BARRA ROTANTI***ROTATING STOP SHOCK ABSORBERS*

Articolo	VDI	D	H	C*
VDI30.SAS35	30	35	70	3
VDI30.SAS56	30	56	70	3
VDI40.SAS40	40	40	78	3
VDI40.SAS60	40	60	78	3

* **CORSA DI COMPRESSIONE*** *ABSORBER STROKE***CONTROPUNTE ROTANTI CON COMPRESSIONE***LIVE CENTRES WITH COMPRESSION*

Articolo	VDI	A	H	S	C*
VDI30.CNP58	30	58	78	34	2,5
VDI40.CNP58	40	58	80	34	2,5

* **CORSA DI COMPRESSIONE*** *ABSORBER STROKE***FORNITI CON CUSPIDE**
CNP.CS1*SUPPLIED WITH TIP*
*CNP.CS1***CUSPIDI INTERCAMBIABILI**
*INTERCHANGEABLE TIPS***ACCESSORI - ACCESSORIES****P. 315**SUPPORTI DI MONTAGGIO
ASSEMBLY DEVICES**P. 307**CUSPIDI
TIPS