



MAS 403 BT
MAS 403 BT/B
Attacchi con cono ISO
*Attachments
with ISO cone*

3

 **delta**

3. MANDRINI a cono ISO MAS 403 BT

TOOL HOLDERS with ISO cone MAS 403 BT

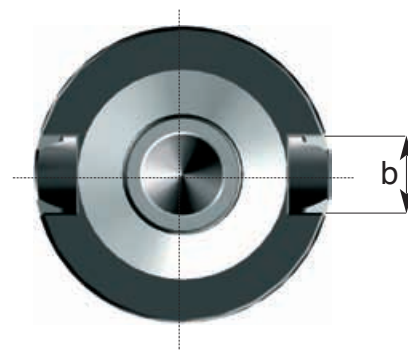
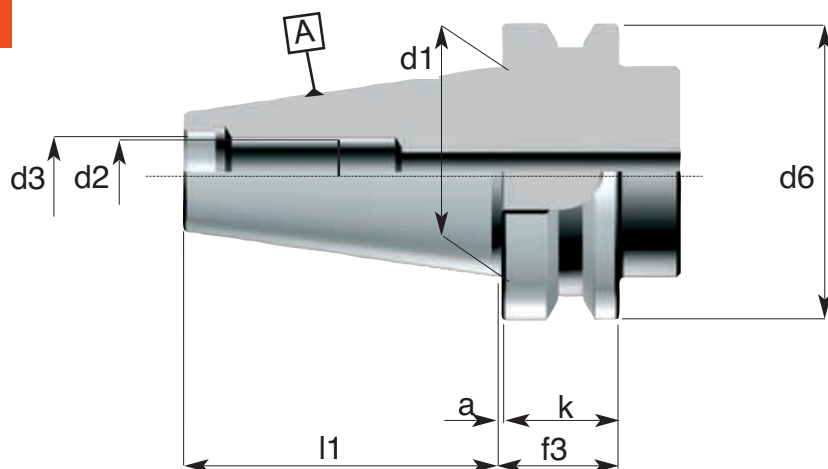


ACCESSORI PER MACCHINE UTENSILI

MAS 403 BT



Attacchi MAS 403 BT



| Riferimento Item | a | b H12 | d1 | d2 | d3 H8 | d6 | f3 | l1 | k |
|---------------------|---|----------|-------|-----|----------|-----|----|-------|----|
| BT 30 | 2 | 16.1 | 31.75 | M12 | 12.5 | 46 | 22 | 48.4 | 20 |
| BT 35 | 2 | 16.1 | 38.10 | M12 | 13 | 53 | 22 | 56.4 | 20 |
| BT 40 | 2 | 16.1 | 44.45 | M16 | 17 | 63 | 27 | 65.4 | 25 |
| BT 50 | 3 | 25.7 | 69.85 | M24 | 25 | 100 | 37 | 101.8 | 35 |

CARATTERISTICHE TECNICHE DEI MANDRINI TC

- Costruiti in acciaio da cementazione legato
- Cementati con profondità 0,8-1mm
Temprati • Rinvenuti • Sabbati e bruniti
- Durezza HRC 58±2 • Resistenza al nucleo 800-1000 N/mm²
- Rettificati di precisione esternamente, internamente e nelle filettature delle ghiere chiudipinza
- Controllati con strumenti di misura certificati
- La tolleranza di precisione dei coni ISO è inferiore ad AT3

STANDARD FEATURES OF TC TOOLING

- Manufactured with Nickel Chrome Molybdenum steel
- Carburized with depth of case 0,8-1 mm
•Hardened and tempered •Black oxidized
- Surface Hardness RC 58±2 • Tensile strenght of core 800-1000 N/mm²
- Precision ground on shanks, inside tapers and collet nut threads
- Tested with high precision inspection and gaging equipment
- Taper accuracy of ISO SHANKS lower than AT3

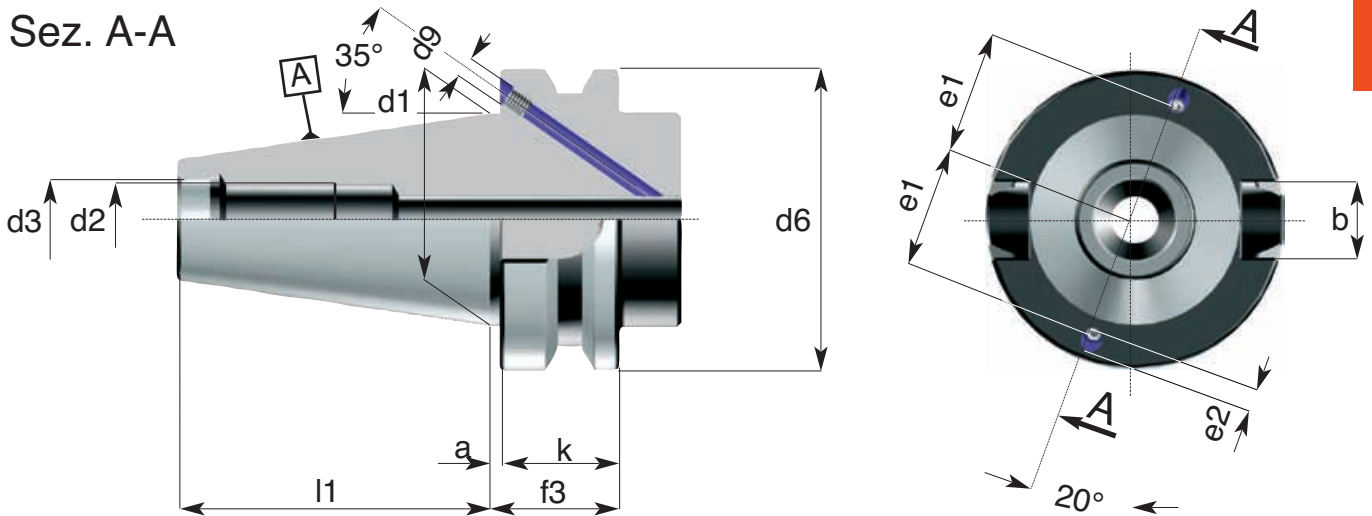
ACCESSORI PER MACCHINE UTENSILI



MAS 403 BT-B

Attacchi MAS 403 BT

Sez. A-A



3.
3

| Riferimento Item | a | b H12 | d1 | d2 | d3 H7 | d6 | f3 | l1 | k | e1 | e2 | d9 |
|---------------------|---|----------|-------|-----|----------|-----|----|-------|----|----|----|----|
| BT 40 | 2 | 16.1 | 44.45 | M16 | 17 | 63 | 27 | 65.4 | 25 | 35 | 5 | 4 |
| BT 50 | 3 | 25.7 | 69.85 | M24 | 25 | 100 | 37 | 101.8 | 35 | 42 | 7 | 6 |

CARATTERISTICHE TECNICHE DEI MANDRINI TC

- Costruiti in acciaio da cementazione legato
- Cementati con profondità 0,8-1mm
Temprati • Rinvenuti • Sabbiati e bruniti
- Durezza HRC 58±2 • Resistenza al nucleo
800-1000 N/mm²
- Rettificati di precisione esternamente,
internamente e nelle filettature delle ghiera
chiodipinza
- Controllati con strumenti di misura certificati
- La tolleranza di precisione dei coni ISO è
inferiore ad AT3

STANDARD FEATURES OF TC TOOLING

- Manufactured with Nickel Chrome Molybdenum
steel
- Carburized with depth of case 0,8-1 mm
•Hardened and tempered •Black oxidized
- Surface Hardness RC 58±2 •Tensile strenght
of core 800-1000 N/mm²
- Precision ground on shanks, inside tapers and
collet nut threads
- Tested with high precision inspection and
gaging equipment
- Taper accuracy of ISO SHANKS lower than AT3

3. MANDRINI a cono ISO MAS 403 BT

TOOL HOLDERS with ISO cone MAS 403 BT



Portafrese combinati trascinamento frontale e a chiave DIN 6358 B

Combined milling cutter chucks DIN 6358 B

Kombi-Aufsteckfräserdorne DIN 6358 B

Mandrins porte-fraises combinés DIN 6358 B

ACCESSORI PER MACCHINE UTENSILI

MAS 403 BT

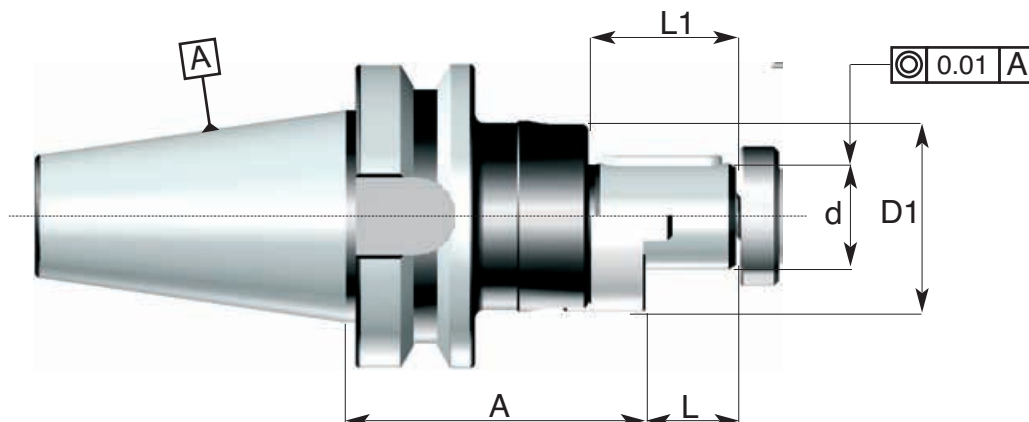
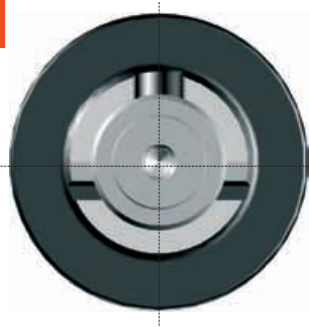


Prebilanciato
Prebalanced
G6.3 / 8000rpm



ART: 130 BT

3
4



| Codice di ord Code | SK | d h6 | A | L | L1 | D1 | Trascinatore Ring | Vite Screw | Linguetta Key |
|-----------------------|-------|---------|-----|----|----|----|----------------------|---------------|------------------|
| 060.130.30.0160 | SK 30 | 16 | 50 | 17 | 27 | 32 | 190.01 | 191.01 | 130.199.01 |
| 060.130.30.0220 | SK 30 | 22 | 50 | 19 | 31 | 40 | 190.02 | 191.02 | 130.199.02 |
| 060.130.30.0270 | SK 30 | 27 | 50 | 21 | 33 | 48 | 190.03 | 191.03 | 130.199.03 |
| 061.130.35.0160 | SK 35 | 16 | 50 | 17 | 27 | 32 | 190.01 | 191.01 | 130.199.01 |
| 061.130.35.0220 | SK 35 | 22 | 50 | 19 | 31 | 40 | 190.02 | 191.02 | 130.199.02 |
| 061.130.35.0270 | SK 35 | 27 | 50 | 21 | 33 | 48 | 190.03 | 191.03 | 130.199.03 |
| 061.130.35.0320 | SK 35 | 32 | 55 | 24 | 38 | 58 | 190.04 | 191.04 | 130.199.04 |
| 063.130.40.0160 | SK 40 | 16 | 50 | 17 | 27 | 32 | 190.01 | 191.01 | 130.199.01 |
| 063.130.40.0162 | SK 40 | 16 | 90 | 17 | 27 | 32 | 190.01 | 191.01 | 130.199.01 |
| 063.130.40.0220 | SK 40 | 22 | 55 | 19 | 31 | 40 | 190.02 | 191.02 | 130.199.02 |
| 063.130.40.0222 | SK 40 | 22 | 90 | 19 | 31 | 40 | 190.02 | 191.02 | 130.199.02 |
| 063.130.40.0270 | SK 40 | 27 | 55 | 21 | 33 | 48 | 190.03 | 191.03 | 130.199.03 |
| 063.130.40.0272 | SK 40 | 27 | 90 | 21 | 33 | 48 | 190.03 | 191.03 | 130.199.03 |
| 063.130.40.0320 | SK 40 | 32 | 60 | 24 | 38 | 58 | 190.04 | 191.04 | 130.199.04 |
| 063.130.40.0322 | SK 40 | 32 | 90 | 24 | 38 | 58 | 190.04 | 191.04 | 130.199.04 |
| 063.130.40.0400 | SK 40 | 40 | 60 | 27 | 41 | 70 | 190.05 | 191.05 | 130.199.05 |
| 063.130.40.0402 | SK 40 | 40 | 90 | 27 | 41 | 70 | 190.05 | 191.05 | 130.199.05 |
| 065.130.50.0160 | SK 50 | 16 | 65 | 17 | 27 | 32 | 190.01 | 191.01 | 130.199.01 |
| 065.130.50.0162 | SK 50 | 16 | 120 | 17 | 27 | 32 | 190.01 | 191.01 | 130.199.01 |
| 065.130.50.0220 | SK 50 | 22 | 65 | 19 | 31 | 40 | 190.02 | 191.02 | 130.199.02 |
| 065.130.50.0222 | SK 50 | 22 | 120 | 19 | 31 | 40 | 190.02 | 191.02 | 130.199.02 |
| 065.130.50.0270 | SK 50 | 27 | 70 | 21 | 33 | 48 | 190.03 | 191.03 | 130.199.03 |
| 065.130.50.0272 | SK 50 | 27 | 120 | 21 | 33 | 48 | 190.03 | 191.03 | 130.199.03 |
| 065.130.50.0320 | SK 50 | 32 | 70 | 24 | 38 | 58 | 190.04 | 191.04 | 130.199.04 |
| 065.130.50.0322 | SK 50 | 32 | 120 | 24 | 38 | 58 | 190.04 | 191.04 | 130.199.04 |
| 065.130.50.0400 | SK 50 | 40 | 75 | 27 | 41 | 70 | 190.05 | 191.05 | 130.199.05 |
| 065.130.50.0402 | SK 50 | 40 | 120 | 27 | 41 | 70 | 190.05 | 191.05 | 130.199.05 |
| 065.130.50.0500 | SK 50 | 50 | 75 | 30 | 46 | 90 | 190.06 | 191.06 | 130.199.06 |
| 065.130.50.0502 | SK 50 | 50 | 120 | 30 | 46 | 90 | 190.06 | 191.06 | 130.199.06 |

Pag. 12.E4



Pag. 12.E5



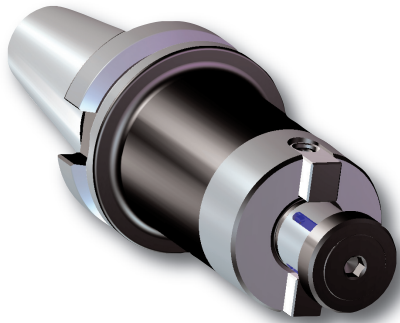
ACCESSORI PER MACCHINE UTENSILI

Portafrese con trascinamento frontale per frese a manicotto DIN 138

Face milling cutter chucks DIN 138

Aufsteckfräserdome DIN 138

Mandrinis porte-fraises à surfacer DIN 138

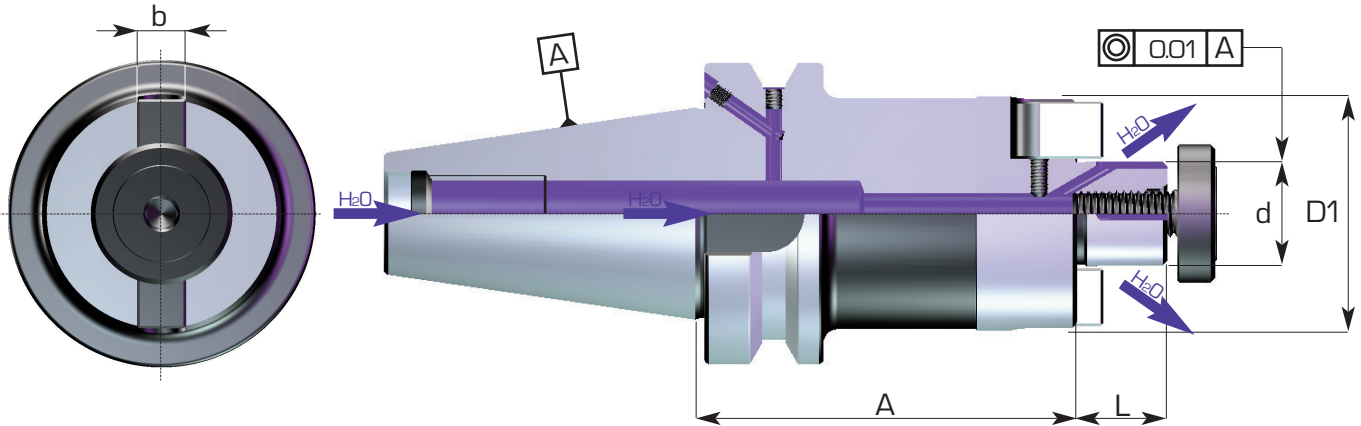


Prebilanciato
Prebalanced
G6.3 / 8000rpm



MAS 403 BT

ART: 150 BT



| Codice di ord Code | SK | d h6 | A | L | D1 | b | Tassello Tenon | Vite Screw |
|-----------------------|-------|---------|-----|----|------|----|-------------------|---------------|
| H63.15040.016.060 | SK 40 | 16 | 60 | 17 | 38 | 8 | 151.101 | 191.01 |
| H63.15040.016.100 | SK 40 | 16 | 100 | 17 | 38 | 8 | 151.101 | 191.01 |
| H63.15040.022.060 | SK 40 | 22 | 60 | 19 | 49 | 10 | 151.102 | 191.02 |
| H63.15040.022.100 | SK 40 | 22 | 100 | 19 | 49 | 10 | 151.102 | 191.02 |
| H63.15040.022.127 | SK 40 | 22 | 127 | 19 | 49 | 10 | 151.102 | 191.02 |
| H63.15040.022.177 | SK 40 | 22 | 177 | 19 | 49 | 10 | 151.102 | 191.02 |
| *O63.15040.022.227 | SK 40 | 22 | 227 | 19 | 49 | 10 | 151.102 | 191.02 |
| H63.15040.027.045 | SK 40 | 27 | 45 | 21 | 60 | 12 | 151.103 | 191.03 |
| H63.15040.027.100 | SK 40 | 27 | 100 | 21 | 60 | 12 | 151.103 | 191.03 |
| H63.15040.027.127 | SK 40 | 27 | 127 | 21 | 60 | 12 | 151.103 | 191.03 |
| H63.15040.027.177 | SK 40 | 27 | 177 | 21 | 60 | 12 | 151.103 | 191.03 |
| *O63.15040.027.227 | SK 40 | 27 | 227 | 21 | 60 | 12 | 151.103 | 191.03 |
| H63.15040.032.060 | SK 40 | 32 | 60 | 24 | 64.5 | 14 | 151.104 | 191.04 |
| H63.15040.040.100 | SK 40 | 40 | 100 | 27 | 74.5 | 16 | 151.105.R14 | 191.05 |
| H65.15050.016.075 | SK 50 | 16 | 75 | 17 | 38 | 8 | 151.101 | 191.01 |
| H65.15050.022.075 | SK 50 | 22 | 75 | 19 | 49 | 10 | 151.102 | 191.02 |
| H65.15050.022.100 | SK 50 | 22 | 100 | 19 | 49 | 10 | 151.102 | 191.02 |
| H65.15050.022.188 | SK 50 | 22 | 188 | 19 | 49 | 10 | 151.102 | 191.02 |
| *O65.15050.022.238 | SK 50 | 22 | 238 | 19 | 49 | 10 | 151.102 | 191.02 |
| *O65.15050.022.338 | SK 50 | 22 | 338 | 19 | 49 | 10 | 151.102 | 191.02 |
| H65.15050.027.060 | SK 50 | 27 | 60 | 21 | 60 | 12 | 151.103 | 191.03 |
| H65.15050.027.100 | SK 50 | 27 | 100 | 21 | 60 | 12 | 151.103 | 191.03 |
| H65.15050.027.188 | SK 50 | 27 | 188 | 21 | 60 | 12 | 151.103 | 191.03 |
| *O65.15050.027.238 | SK 50 | 27 | 238 | 21 | 60 | 12 | 151.103 | 191.03 |
| *O65.15050.027.338 | SK 50 | 27 | 338 | 21 | 60 | 12 | 151.103 | 191.03 |
| H65.15050.032.075 | SK 50 | 32 | 75 | 24 | 75 | 14 | 151.104 | 191.04 |
| H65.15050.032.100 | SK 50 | 32 | 100 | 24 | 75 | 14 | 151.104 | 191.04 |
| H65.15050.040.060 | SK 50 | 40 | 60 | 27 | 85 | 16 | 151.105 | 191.05 |
| H65.15050.040.100 | SK 50 | 40 | 100 | 27 | 85 | 16 | 151.105 | 191.05 |

Pag. 12/27



Pag. 12/25



3. MANDRINI a cono ISO MAS 403 BT

TOOL HOLDERS with ISO cone MAS 403 BT



Portafrese con trascinamento frontale e linguetta DIN 138

Face milling cutter chucks DIN 138

Aufsteckfräserdorne DIN 138

Mandrins porte-fraises à surfacer DIN 138

ACCESSORI PER MACCHINE UTENSILI

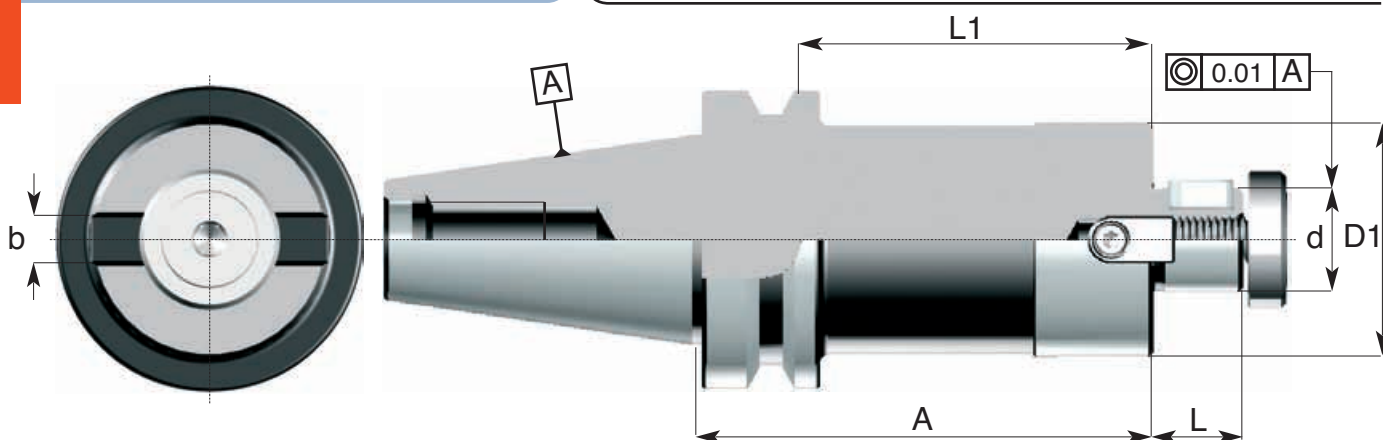
MAS 403 BT



Prebilanciato
Prebalanced
G6.3 / 8000rpm



ART: 151 BT



| Codice di ord Code | SK | d h6 | A | L | L1 | D1 | b | Tassello Tenon | Vite Screw | Linguetta Key |
|-----------------------|-------|---------|-----|----|-----|----|----|-------------------|---------------|------------------|
| 063.151.40.0222 | SK 40 | 22 | 127 | 19 | 100 | 49 | 10 | 151.102 | 191.02 | 151.199.02 |
| 063.151.40.0224 | SK 40 | 22 | 177 | 19 | 150 | 49 | 10 | 151.102 | 191.02 | 151.199.02 |
| 063.151.40.0226 | SK 40 | 22 | 227 | 19 | 200 | 49 | 10 | 151.102 | 191.02 | 151.199.02 |
| 063.151.40.0272 | SK 40 | 27 | 127 | 21 | 100 | 60 | 12 | 151.103 | 191.03 | 151.199.03 |
| 063.151.40.0274 | SK 40 | 27 | 177 | 21 | 150 | 60 | 12 | 151.103 | 191.03 | 151.199.03 |
| 063.151.40.0276 | SK 40 | 27 | 227 | 21 | 200 | 60 | 12 | 151.103 | 191.03 | 151.199.03 |
| 065.151.50.0222 | SK 50 | 22 | 188 | 19 | 150 | 49 | 10 | 151.102 | 191.02 | 151.199.02 |
| 065.151.50.0224 | SK 50 | 22 | 238 | 19 | 200 | 49 | 10 | 151.102 | 191.02 | 151.199.02 |
| 065.151.50.0226 | SK 50 | 22 | 338 | 19 | 300 | 49 | 10 | 151.102 | 191.02 | 151.199.02 |
| 065.151.50.0272 | SK 50 | 27 | 188 | 21 | 150 | 60 | 12 | 151.103 | 191.03 | 151.199.03 |
| 065.151.50.0274 | SK 50 | 27 | 238 | 21 | 200 | 60 | 12 | 151.103 | 191.03 | 151.199.03 |
| 065.151.50.0276 | SK 50 | 27 | 338 | 21 | 300 | 60 | 12 | 151.103 | 191.03 | 151.199.03 |



ARTICOLO DISPONIBILE FINO AD ESAURIMENTO SCORTE.
SOSTITUITO DA 063/H63.150 E 065/H65.150

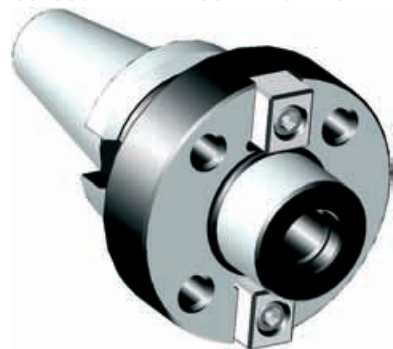
ACCESSORI PER MACCHINE UTENSILI

Portafrese trascinamento frontale per frese a inserti DIN 6357 B

Centering arbors for milling cutters DIN 6357 B

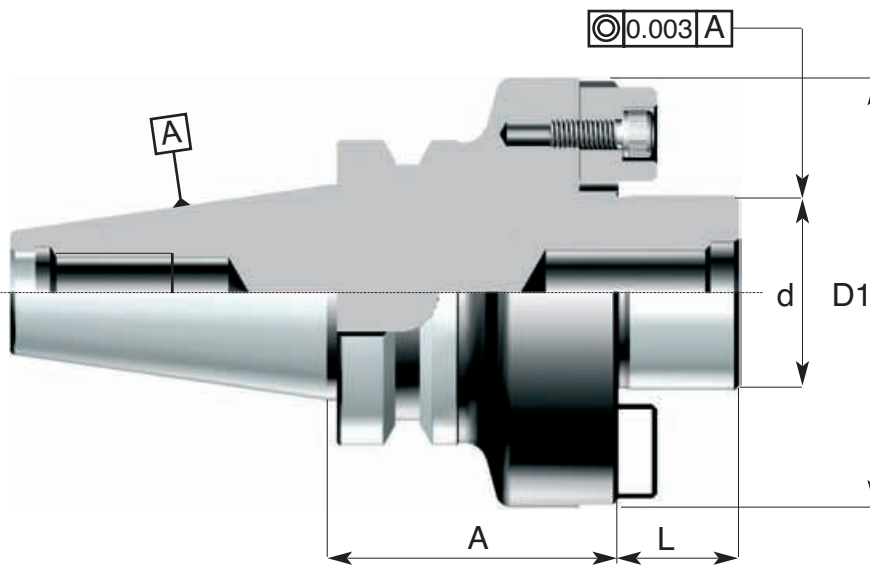
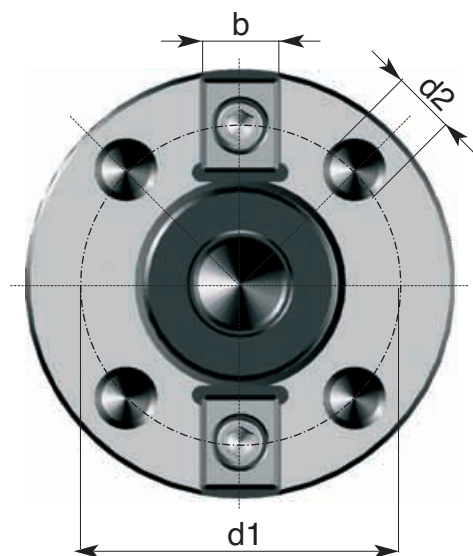
Aufnahmedorne für Messerköpfe DIN 6357 B

Mandrins porte-fraises pour têtes porte-lames DIN 6357 B



MAS 403 BT

ART: 160 BT



3.
7

| Codice di ord Code | SK | D1 h6 | d | A h6 | d1 | d2 | L | b | Tassello Tenon |
|-----------------------|-------|----------|----|---------|-------|------|------|------|-------------------|
| 063.160.40.0880.40 | SK 40 | 88.882 | 40 | 60 | 66.70 | M 12 | M 12 | 15.9 | 192.02 |
| 063.160.40.1280.60 | SK 40 | 128.570 | 60 | 60 | 101.6 | M 16 | M 16 | 25.4 | 192.03 |
| 065.160.50.0880.40 | SK 50 | 88.882 | 40 | 70 | 66.70 | M 12 | M 12 | 15.9 | 192.02 |
| 065.160.50.1280.60 | SK 50 | 128.570 | 60 | 75 | 101.6 | M 16 | M 16 | 25.4 | 192.03 |

Pag. 12.26



3. MANDRINI a cono ISO MAS 403 BT TOOL HOLDERS with ISO cone MAS 403 BT

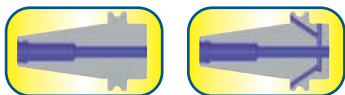


Portafrese cilindriche tipo weldon corto e tipo ribassato per punte

Milling cutter chucks for straight-shank tools Weldon System - short type and lowered type for drills
Spannfutter Weldon für Zylinderschäfte - kurze Ausführung und verringerte Ausführung für Bohrer
Mandrins porte-Weldon pour fraises à queue cylindrique - type court et type surbaissé pour forets

ACCESSORI PER MACCHINE UTENSILI

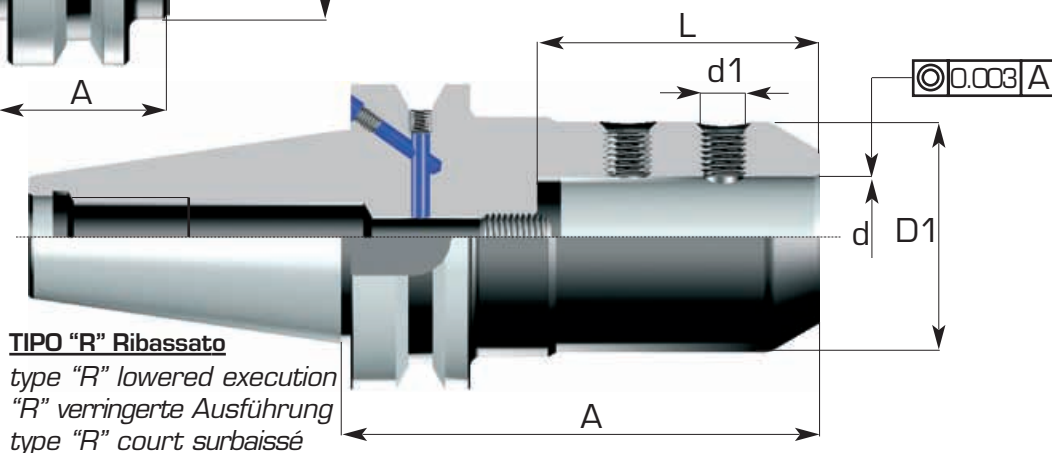
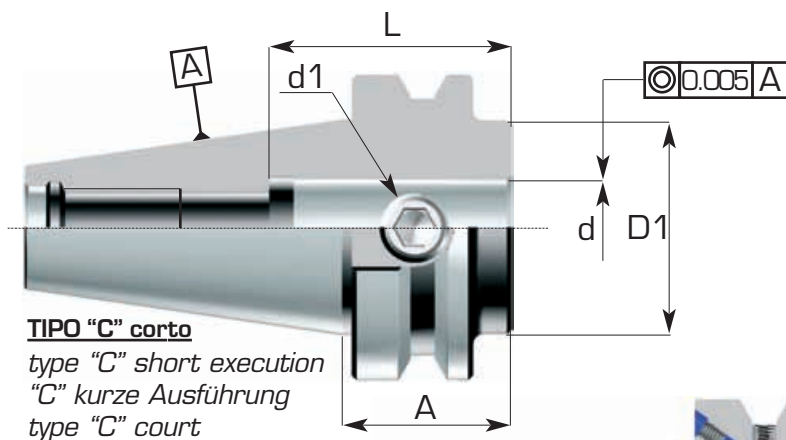
MAS 403 BT



ART: 208 BT e 208.R BT

Prebilanciato
Prebalanced
G6.3 / 8000rpm

3
8



| Codice di ord Code | SK | d H5 | A | D1 | L | d1 | Grano di serraggio Clamping screw |
|-----------------------|-------|---------|-----|----|----|----------------|--------------------------------------|
| 063.208.40.0160.C | SK 40 | 16 | 35 | 44 | 45 | M14X1.5 | 208.00.0140 |
| 063.208.40.0200.C | SK 40 | 20 | 35 | 44 | 45 | M14X1.5 | 208.00.0140 |
| 063.208.40.0250.C | SK 40 | 25 | 35 | 44 | 55 | M14X1.5 | 208.00.0140 |
| 063.208.40.0320.C | SK 40 | 32 | 70 | 72 | 60 | M16X1 - 20X1.5 | 208.00.0161 - 208.00.0200 |
| 065.208.50.0160.C | SK 50 | 16 | 45 | 70 | 45 | M14X1.5 | 208.00.0140 |
| 065.208.50.0200.C | SK 50 | 20 | 45 | 70 | 45 | M16X1.5 | 208.00.0160 |
| 065.208.50.0250.C | SK 50 | 25 | 45 | 70 | 55 | M18X1.5 | 208.00.0180 |
| 065.208.50.0320.C | SK 50 | 32 | 45 | 70 | 60 | M20X1.5 | 208.00.0200 |
| H63.208.40.0250.R | SK 40 | 25 | 100 | 45 | 59 | M10X1 | 208.00.0100.R |
| H63.208.40.0320.R | SK 40 | 32 | 80 | 52 | 63 | M12X1 | 208.00.0120.R |
| H63.208.40.0400.R | SK 40 | 40 | 87 | 63 | 73 | M16X1 | 208.00.0160.R |
| H65.208.50.0320.R | SK 50 | 32 | 100 | 52 | 63 | M12X1 | 208.00.0120.R |
| H65.208.50.0400.R | SK 50 | 40 | 115 | 65 | 73 | M16X1 | 208.00.0160.R |



ACCESSORI PER MACCHINE UTENSILI

Portafrese cilindriche tipo weldon con vite di registrazione interna DIN 6359 B
 Milling cutter chucks for straight-shank tools - Weldon System DIN 6359 B
 Spannfutter Weldon für Zylinderschäfte DIN 6359 B
 Mandrins porte-Weldon pour fraises à queue cylindrique DIN 6359 B

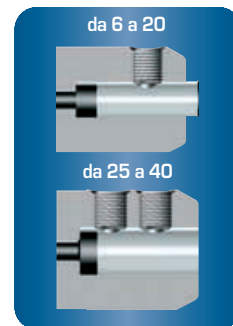
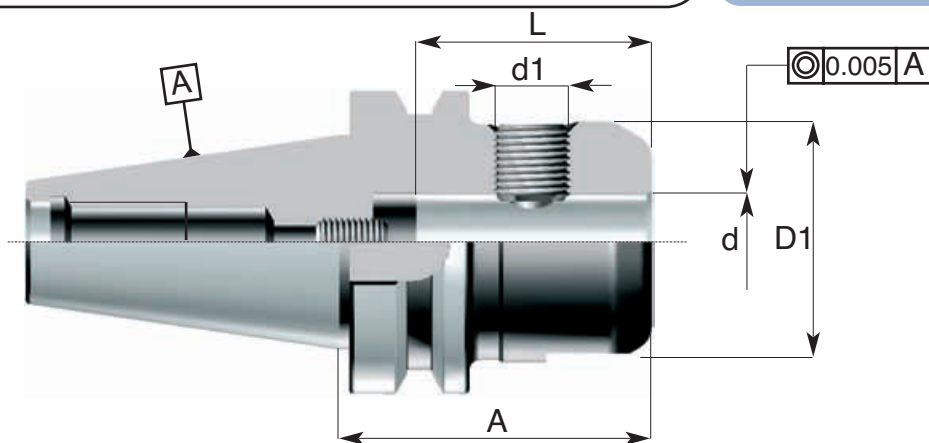


Prebilanciato
 Prebalanced
 G6.3 / 8000rpm



MAS 403 BT

ART: 208 BT



3.
9

| Codice di ord Code | SK | d H5 | A | D1 | L | d1 | Grano di serraggio Clamping screw |
|-----------------------|-------|---------|-----|----|----|------------|--------------------------------------|
| 060.208.30.0060 | SK 30 | 6 | 60 | 25 | 35 | M6X10 | 208.00.0060 |
| 060.208.30.0080 | SK 30 | 8 | 60 | 28 | 35 | M8X10 | 208.00.0080 |
| 060.208.30.0100 | SK 30 | 10 | 60 | 35 | 39 | M10X12 | 208.00.0100 |
| 060.208.30.0120 | SK 30 | 12 | 60 | 42 | 44 | M12X1,5X16 | 208.00.0120 |
| 060.208.30.0160 | SK 30 | 16 | 60 | 48 | 47 | M14X1,5X16 | 208.00.0140 |
| 060.208.30.0200 | SK 30 | 20 | 60 | 52 | 49 | M16X1,5X16 | 208.00.0160 |
| 061.208.35.0060 | SK 35 | 6 | 60 | 25 | 35 | M6X10 | 208.00.0060 |
| 061.208.35.0080 | SK 35 | 8 | 60 | 28 | 35 | M8X10 | 208.00.0080 |
| 061.208.35.0100 | SK 35 | 10 | 60 | 35 | 39 | M10X12 | 208.00.0100 |
| 061.208.35.0120 | SK 35 | 12 | 60 | 42 | 44 | M12X1,5X16 | 208.00.0120 |
| 061.208.35.0160 | SK 35 | 16 | 60 | 48 | 47 | M14X1,5X16 | 208.00.0140 |
| 061.208.35.0200 | SK 35 | 20 | 60 | 52 | 49 | M16X1,5X16 | 208.00.0160 |
| 061.208.35.0250 | SK 35 | 25 | 80 | 65 | 54 | M18X1,5X20 | 208.00.0180 |
| 063.208.40.0060 | SK 40 | 6 | 65 | 25 | 35 | M6X10 | 208.00.0060 |
| 063.208.40.0080 | SK 40 | 8 | 65 | 28 | 35 | M8X10 | 208.00.0080 |
| 063.208.40.0100 | SK 40 | 10 | 65 | 35 | 39 | M10X12 | 208.00.0100 |
| 063.208.40.0120 | SK 40 | 12 | 65 | 42 | 44 | M12X1,5X16 | 208.00.0120 |
| 063.208.40.0140 | SK 40 | 14 | 65 | 44 | 44 | M12X1,5X16 | 208.00.0120 |
| 063.208.40.0160 | SK 40 | 16 | 65 | 48 | 47 | M14X1,5X16 | 208.00.0140 |
| 063.208.40.0180 | SK 40 | 18 | 65 | 48 | 47 | M14X1,5X16 | 208.00.0140 |
| 063.208.40.0200 | SK 40 | 20 | 65 | 52 | 49 | M16X1,5X16 | 208.00.0160 |
| 063.208.40.0250 | SK 40 | 25 | 90 | 65 | 54 | M18X1,5X20 | 208.00.0180 |
| 063.208.40.0320 | SK 40 | 32 | 90 | 72 | 58 | M20X1,5X20 | 208.00.0200 |
| 063.208.40.0400 | SK 40 | 40 | 105 | 80 | 68 | M20X1,5X20 | 208.00.0200 |
| 065.208.50.0060 | SK 50 | 6 | 80 | 25 | 35 | M6X10 | 208.00.0060 |
| 065.208.50.0080 | SK 50 | 8 | 80 | 28 | 35 | M8X10 | 208.00.0080 |
| 065.208.50.0100 | SK 50 | 10 | 80 | 35 | 39 | M10X12 | 208.00.0100 |
| 065.208.50.0120 | SK 50 | 12 | 80 | 42 | 44 | M12X1,5X16 | 208.00.0120 |
| 065.208.50.0140 | SK 50 | 14 | 80 | 44 | 44 | M12X1,5X16 | 208.00.0120 |
| 065.208.50.0160 | SK 50 | 16 | 80 | 48 | 47 | M14X1,5X16 | 208.00.0140 |
| 065.208.50.0180 | SK 50 | 18 | 80 | 50 | 47 | M14X1,5X16 | 208.00.0140 |
| 065.208.50.0200 | SK 50 | 20 | 80 | 52 | 49 | M16X1,5X16 | 208.00.0160 |
| 065.208.50.0250 | SK 50 | 25 | 100 | 65 | 54 | M18X1,5X20 | 208.00.0180 |
| 065.208.50.0320 | SK 50 | 32 | 100 | 72 | 58 | M20X1,5X20 | 208.00.0200 |
| 065.208.50.0400 | SK 50 | 40 | 115 | 80 | 68 | M20X1,5X20 | 208.00.0200 |
| 065.208.50.0500 | SK 50 | 50 | 115 | 90 | 78 | M24X2X20 | 208.00.0240 |



3. MANDRINI a cono ISO MAS 403 BT

TOOL HOLDERS with ISO cone MAS 403 BT



Portafrese cilindriche tipo weldon con vite di registrazione interna DIN 6359 B
 Milling cutter chucks for straight-shank tools - Weldon System DIN 6359 B
 Spannfutter Weldon für Zylinderschäfte DIN 6359 B
 Mandrins porte-Weldon pour fraises à queue cylindrique DIN 6359 B

ACCESSORI PER MACCHINE UTENSILI

MAS 403 BT/B

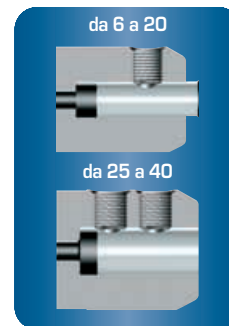
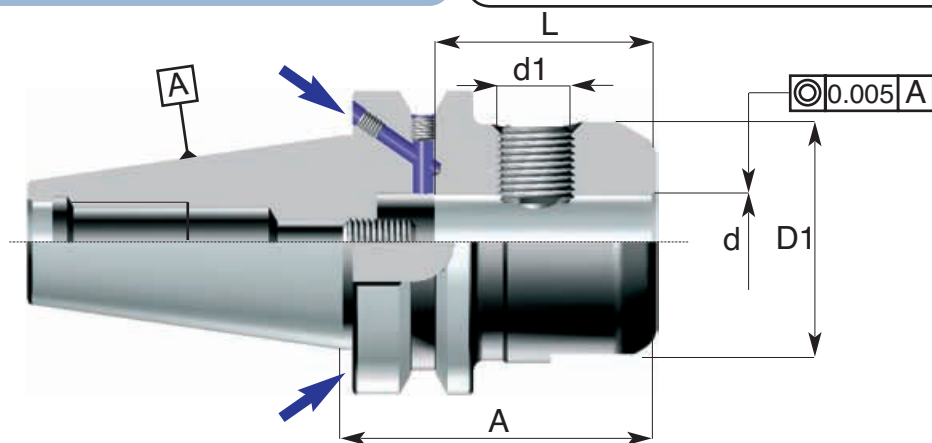


Prebilanciato
 Prebalanced
 G6.3 / 8000rpm



ART: H208 BT/B

3.
10



| Codice di ord Code | SK | d H5 | A | D1 | L | d1 | Grano di serraggio Clamping screw |
|-----------------------|-------|---------|-----|----|----|------------|--------------------------------------|
| H63.208.40.0060 | SK 40 | 6 | 65 | 25 | 35 | 6MX10 | 208.00.0060 |
| H63.208.40.0080 | SK 40 | 8 | 65 | 28 | 35 | 8MX10 | 208.00.0080 |
| H63.208.40.0100 | SK 40 | 10 | 65 | 35 | 39 | 10MX12 | 208.00.0100 |
| H63.208.40.0120 | SK 40 | 12 | 65 | 42 | 44 | 12MX1,5X16 | 208.00.0120 |
| H63.208.40.0140 | SK 40 | 14 | 65 | 44 | 44 | 12MX1,5X16 | 288.00.0120 |
| H63.208.40.0160 | SK 40 | 16 | 65 | 48 | 47 | 14MX1,5X16 | 208.00.0140 |
| H63.208.40.0180 | SK 40 | 18 | 65 | 50 | 47 | 14MX1,5X16 | 288.00.0160 |
| H63.208.40.0200 | SK 40 | 20 | 65 | 52 | 49 | 16MX1,5X16 | 208.00.0160 |
| H63.208.40.0250 | SK 40 | 25 | 90 | 65 | 54 | 18MX1,5X20 | 208.00.0200 |
| H63.208.40.0320 | SK 40 | 32 | 90 | 72 | 58 | 20MX1,5X20 | 208.00.0200 |
| H63.208.40.0400 | SK 40 | 40 | 105 | 80 | 68 | 20MX1,5X20 | 208.00.0200 |
| H65.208.50.0060 | SK 50 | 6 | 80 | 25 | 35 | 6MX10 | 208.00.0060 |
| H65.208.50.0080 | SK 50 | 8 | 80 | 28 | 35 | 8MX10 | 208.00.0080 |
| H65.208.50.0100 | SK 50 | 10 | 80 | 35 | 39 | 10MX12 | 208.00.0100 |
| H65.208.50.0120 | SK 50 | 12 | 80 | 42 | 44 | 12MX1,5X16 | 208.00.0120 |
| H65.208.50.0140 | SK 50 | 14 | 60 | 44 | 44 | 12MX1,5X16 | 208.00.0120 |
| H65.208.50.0160 | SK 50 | 16 | 80 | 48 | 47 | 14MX1,5X16 | 208.00.0140 |
| H65.208.50.0180 | SK 50 | 16 | 60 | 50 | 47 | 14MX1,5X16 | 208.00.0160 |
| H65.208.50.0200 | SK 50 | 20 | 80 | 52 | 49 | 16MX1,5X16 | 208.00.0160 |
| H65.208.50.0250 | SK 50 | 25 | 100 | 65 | 54 | 18MX1,5X20 | 208.00.0180 |
| H65.208.50.0320 | SK 50 | 32 | 100 | 72 | 58 | 20MX1,5X20 | 208.00.0200 |
| H65.208.50.0400 | SK 50 | 40 | 115 | 80 | 68 | 20MX1,5X20 | 208.00.0200 |
| H65.208.50.0500 | SK 50 | 50 | 115 | 90 | 78 | 24MX2X20 | 208.00.0240 |



ACCESSORI PER MACCHINE UTENSILI

Portafrese cilindriche tipo weldon con vite di registrazione interna DIN 6359 B
 Milling cutter chucks for straight-shank tools - Weldon System DIN 6359 B
 Spannfutter Weldon für Zylinderschäfte DIN 6359 B
 Mandrins porte-Weldon pour fraises à queue cylindrique DIN 6359 B

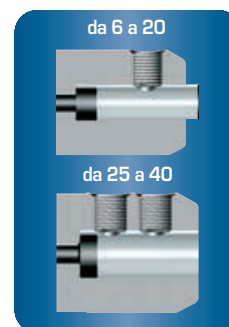
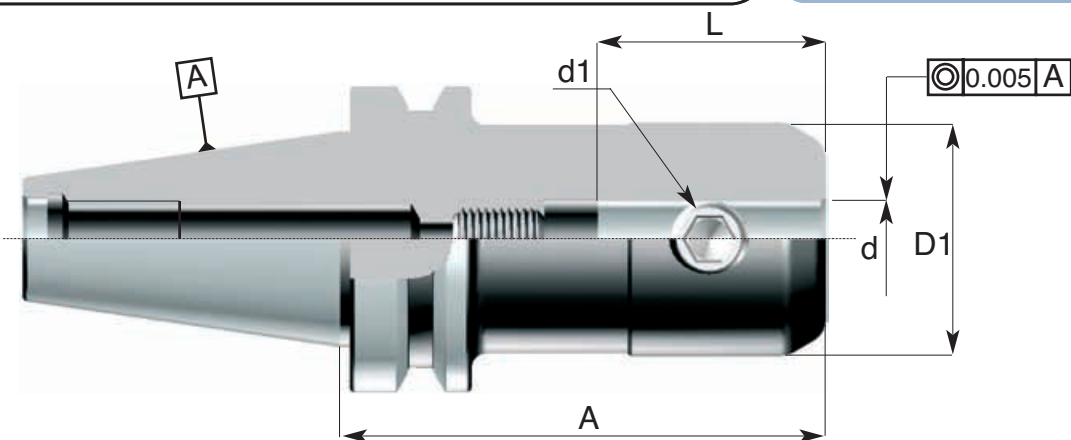


Prebilanciato
 Prebalanced
 G6.3 / 8000rpm



MAS 403 BT

ART: 208 BT



3.
11

| Codice di ord Code | SK | d H5 | A | D1 | L | d1 | Grano di serraggio Clamping screw |
|-----------------------|-------|---------|-----|----|----|------------|--------------------------------------|
| 063.208.40.0062 | SK 40 | 6 | 100 | 25 | 35 | M6X10 | 208.00.0060 |
| 063.208.40.0064 | SK 40 | 6 | 150 | 25 | 35 | M6X10 | 208.00.0060 |
| 063.208.40.0082 | SK 40 | 8 | 100 | 28 | 35 | M8X10 | 208.00.0080 |
| 063.208.40.0084 | SK 40 | 8 | 150 | 28 | 35 | M8X10 | 208.00.0080 |
| 063.208.40.0102 | SK 40 | 10 | 100 | 35 | 39 | M10X12 | 208.00.0100 |
| 063.208.40.0104 | SK 40 | 10 | 150 | 35 | 39 | M10X12 | 208.00.0100 |
| 063.208.40.0122 | SK 40 | 12 | 100 | 42 | 44 | M12X1,5X16 | 208.00.0120 |
| 063.208.40.0124 | SK 40 | 12 | 150 | 42 | 44 | M12X1,5X16 | 208.00.0120 |
| 063.208.40.0142 | SK 40 | 14 | 100 | 44 | 44 | M12X1,5X16 | 208.00.0120 |
| 063.208.40.0144 | SK 40 | 14 | 150 | 44 | 44 | M12X1,5X16 | 208.00.0120 |
| 063.208.40.0162 | SK 40 | 16 | 100 | 48 | 47 | M14X1,5X16 | 208.00.0140 |
| 063.208.40.0164 | SK 40 | 16 | 150 | 48 | 47 | M14X1,5X16 | 208.00.0140 |
| 063.208.40.0182 | SK 40 | 18 | 100 | 50 | 47 | M14X1,5X16 | 208.00.0160 |
| 063.208.40.0184 | SK 40 | 18 | 150 | 50 | 47 | M14X1,5X16 | 208.00.0160 |
| 063.208.40.0202 | SK 40 | 20 | 100 | 52 | 49 | M16X1,5X16 | 208.00.0180 |
| 063.208.40.0204 | SK 40 | 20 | 150 | 52 | 49 | M16X1,5X16 | 208.00.0180 |
| 063.208.40.0254 | SK 40 | 25 | 150 | 65 | 54 | M18X1,5X20 | 208.00.0180 |
| 063.208.40.0324 | SK 40 | 32 | 150 | 72 | 58 | M20X1,5X20 | 208.00.0200 |
| 065.208.50.0062 | SK 50 | 6 | 100 | 25 | 35 | M6X10 | 208.00.0060 |
| 065.208.50.0064 | SK 50 | 6 | 150 | 25 | 35 | M6X10 | 208.00.0060 |
| 065.208.50.0082 | SK 50 | 8 | 100 | 28 | 35 | M8X10 | 208.00.0080 |
| 065.208.50.0084 | SK 50 | 8 | 150 | 28 | 35 | M8X10 | 208.00.0080 |
| 065.208.50.0102 | SK 50 | 10 | 100 | 35 | 39 | M10X12 | 208.00.0100 |
| 065.208.50.0104 | SK 50 | 10 | 150 | 35 | 39 | M10X12 | 208.00.0100 |
| 065.208.50.0122 | SK 50 | 12 | 100 | 42 | 44 | M12X1,5X16 | 208.00.0120 |
| 065.208.50.0124 | SK 50 | 12 | 150 | 42 | 44 | M12X1,5X16 | 208.00.0120 |
| 063.208.50.0142 | SK 50 | 14 | 100 | 44 | 44 | M12X1,5X16 | 208.00.0120 |
| 065.208.50.0144 | SK 50 | 14 | 150 | 44 | 44 | M12X1,5X16 | 208.00.0120 |
| 065.208.50.0162 | SK 50 | 16 | 100 | 48 | 47 | M14X1,5X16 | 208.00.0140 |
| 065.208.50.0164 | SK 50 | 16 | 150 | 48 | 47 | M14X1,5X16 | 208.00.0140 |
| 065.208.50.0182 | SK 50 | 18 | 100 | 50 | 47 | M14X1,5X16 | 208.00.0140 |
| 065.208.50.0184 | SK 50 | 18 | 150 | 50 | 47 | M14X1,5X16 | 208.00.0140 |
| 065.208.50.0202 | SK 50 | 20 | 100 | 52 | 49 | M16X1,5X16 | 208.00.0160 |
| 065.208.50.0204 | SK 50 | 20 | 150 | 52 | 49 | M16X1,5X16 | 208.00.0160 |
| 065.208.50.0252 | SK 50 | 25 | 100 | 65 | 54 | M18X1,5X20 | 208.00.0180 |
| 065.208.50.0254 | SK 50 | 25 | 150 | 65 | 54 | M18X1,5X20 | 208.00.0180 |
| 065.208.50.0324 | SK 50 | 32 | 150 | 72 | 58 | M20X1,5X20 | 208.00.0200 |
| 065.208.50.0404 | SK 50 | 40 | 150 | 80 | 68 | M20X1,5X20 | 208.00.0200 |



3. MANDRINI a cono ISO MAS 403 BT TOOL HOLDERS with ISO cone MAS 403 B



Portafrese cilindriche tipo weldon con vite di registrazione interna DIN 6359 B
Milling cutter chucks for straight-shank tools - Weldon System DIN 6359 B
Spannfutter Weldon für Zylinderschäfte DIN 6359 B
Mandrins porte-Weldon pour fraises à queue cylindrique DIN 6359 B

ACCESSORI PER MACCHINE UTENSILI



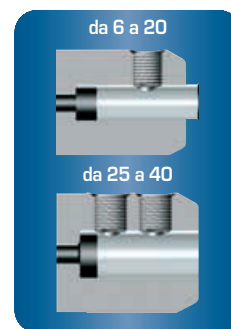
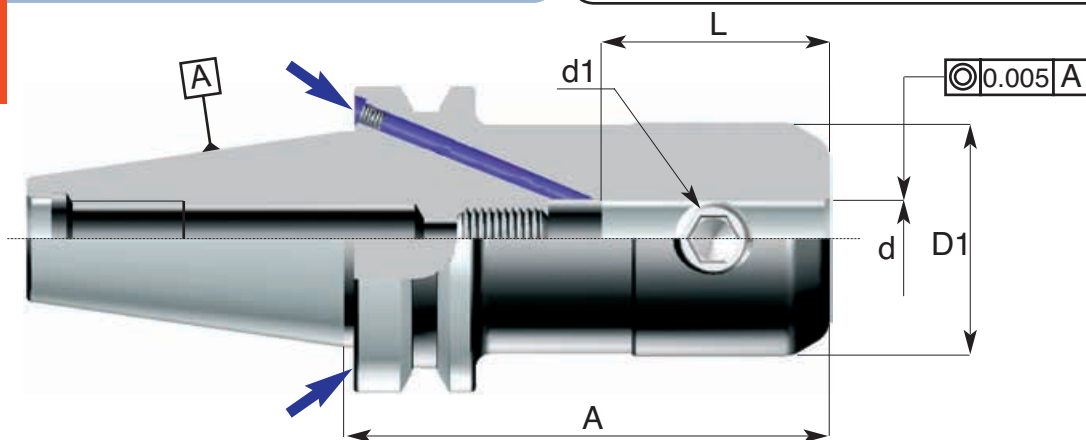
MAS 403 BT/B



Prebilanciato
Prebalanced
G6.3 / 8000rpm

ART: 208 BT/B

3.
12



| Codice di ord Code | SK | d H5 | A | D1 | L | d1 | Grano di serraggio Clamping screw |
|-----------------------|-------|---------|-----|----|----|------------|--------------------------------------|
| H63.208.40.0062 | SK 40 | 6 | 100 | 25 | 35 | M6X10 | 208.00.0060 |
| H63.208.40.0064 | SK 40 | 6 | 150 | 25 | 35 | M6X10 | 208.00.0060 |
| H63.208.40.0082 | SK 40 | 8 | 100 | 28 | 35 | M8X10 | 208.00.0080 |
| H63.208.40.0084 | SK 40 | 8 | 150 | 28 | 35 | M8X10 | 208.00.0080 |
| H63.208.40.0102 | SK 40 | 10 | 100 | 35 | 39 | M10X12 | 208.00.0100 |
| H63.208.40.0104 | SK 40 | 10 | 150 | 35 | 39 | M10X12 | 208.00.0100 |
| H63.208.40.0122 | SK 40 | 12 | 100 | 42 | 44 | M12X1,5X16 | 208.00.0120 |
| H63.208.40.0124 | SK 40 | 12 | 150 | 42 | 44 | M12X1,5X16 | 208.00.0120 |
| H63.208.40.0142 | SK 40 | 14 | 100 | 44 | 44 | M12X1,5X16 | 208.00.0120 |
| H63.208.40.0144 | SK 40 | 14 | 150 | 44 | 44 | M12X1,5X16 | 208.00.0120 |
| H63.208.40.0162 | SK 40 | 16 | 100 | 48 | 47 | M14X1,5X16 | 208.00.0140 |
| H63.208.40.0164 | SK 40 | 16 | 150 | 48 | 47 | M14X1,5X16 | 208.00.0140 |
| H63.208.40.0182 | SK 40 | 18 | 100 | 50 | 47 | M14X1,5X16 | 208.00.0160 |
| H63.208.40.0184 | SK 40 | 18 | 150 | 50 | 47 | M14X1,5X16 | 208.00.0160 |
| H63.208.40.0202 | SK 40 | 20 | 100 | 52 | 49 | M16X1,5X16 | 208.00.0180 |
| H63.208.40.0254 | SK 40 | 25 | 150 | 65 | 54 | M18X1,5X20 | 208.00.0180 |
| H63.208.40.0324 | SK 40 | 32 | 150 | 72 | 58 | M20X1,5X20 | 208.00.0200 |
| H65.208.50.0062 | SK 50 | 6 | 100 | 25 | 35 | M6X10 | 208.00.0060 |
| H65.208.50.0064 | SK 50 | 6 | 150 | 25 | 35 | M6X10 | 208.00.0060 |
| H65.208.50.0082 | SK 50 | 8 | 100 | 28 | 35 | M8X10 | 208.00.0080 |
| H65.208.50.0084 | SK 50 | 8 | 150 | 28 | 35 | M8X10 | 208.00.0080 |
| H65.208.50.0102 | SK 50 | 10 | 100 | 35 | 39 | M10X12 | 208.00.0100 |
| H65.208.50.0104 | SK 50 | 10 | 150 | 35 | 39 | M10X12 | 208.00.0100 |
| H65.208.50.0122 | SK 50 | 12 | 100 | 42 | 44 | M12X1,5X16 | 208.00.0120 |
| H65.208.50.0124 | SK 50 | 12 | 150 | 42 | 44 | M12X1,5X16 | 208.00.0120 |
| H63.208.50.0142 | SK 50 | 14 | 100 | 44 | 44 | M12X1,5X16 | 208.00.0120 |
| H65.208.50.0144 | SK 50 | 14 | 150 | 44 | 44 | M12X1,5X16 | 208.00.0120 |
| H65.208.50.0162 | SK 50 | 16 | 100 | 48 | 47 | M14X1,5X16 | 208.00.0140 |
| H65.208.50.0164 | SK 50 | 16 | 150 | 48 | 47 | M14X1,5X16 | 208.00.0140 |
| H65.208.50.0182 | SK 50 | 18 | 100 | 50 | 47 | M14X1,5X16 | 208.00.0140 |
| H65.208.50.0184 | SK 50 | 18 | 150 | 50 | 47 | M14X1,5X16 | 208.00.0140 |
| H65.208.50.0202 | SK 50 | 20 | 100 | 52 | 49 | M16X1,5X16 | 208.00.0160 |
| H65.208.50.0204 | SK 50 | 20 | 150 | 52 | 49 | M16X1,5X16 | 208.00.0160 |
| H65.208.50.0254 | SK 50 | 25 | 150 | 65 | 54 | M18X1,5X20 | 208.00.0180 |
| H65.208.50.0324 | SK 50 | 32 | 150 | 72 | 58 | M20X1,5X20 | 208.00.0200 |
| H65.208.50.0404 | SK 50 | 40 | 150 | 80 | 68 | M20X1,5X20 | 208.00.0200 |



ACCESSORI PER MACCHINE UTENSILI

Portafrese per calettamento a caldo secondo DIN 69882-8
 Shrink-fit chucks DIN 69882-8
 Schrumpfutter DIN 69882-8
 Mandrins de frettage DIN 69882-8

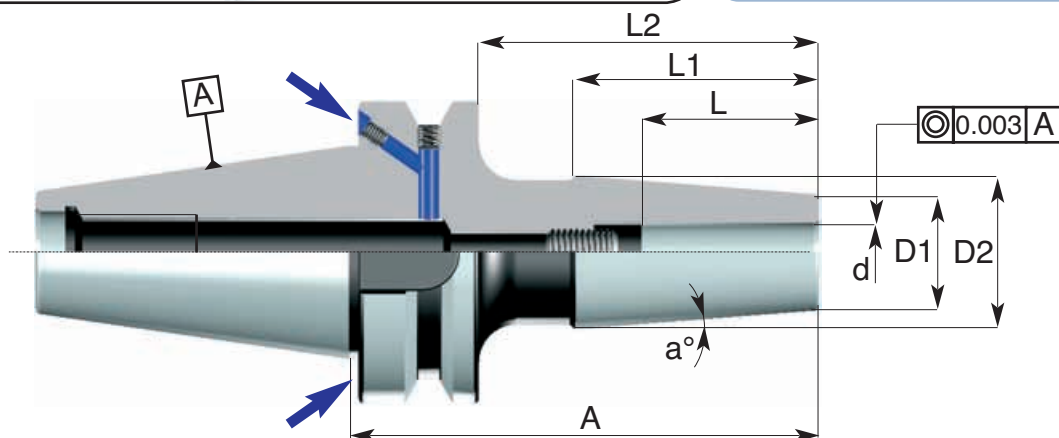


Bilanciatura fine
 Fine balancing



MAS 403 BT/B

ART: H206 BT/B



| Codice di ord Code | SK | d h6 | D1 | D2 | a° | L | L1 | L2 | A | bilanciatura balancing |
|-----------------------|-------|---------|----|----|------|----|----|----|-----|---------------------------|
| H63.206.40.0030 | SK 40 | 3 | 9 | 16 | 4.5° | 15 | 44 | 54 | 81 | G6.3/20000RPM |
| H63.206.40.0040 | SK 40 | 4 | 9 | 16 | 4.5° | 15 | 44 | 54 | 81 | G6.3/20000RPM |
| H63.206.40.0050 | SK 40 | 5 | 12 | 19 | 4.5° | 20 | 44 | 54 | 81 | G6.3/20000RPM |
| H63.206.40.0060 | SK 40 | 6 | 12 | 19 | 4.5° | 27 | 44 | 64 | 91 | G6.3/15000RPM |
| H63.206.40.0080 | SK 40 | 8 | 15 | 23 | 4.5° | 37 | 44 | 64 | 91 | G6.3/15000RPM |
| H63.206.40.0100 | SK 40 | 10 | 19 | 27 | 4.5° | 37 | 51 | 66 | 93 | G6.3/15000RPM |
| H63.206.40.0120 | SK 40 | 12 | 24 | 32 | 4.5° | 37 | 51 | 71 | 98 | G6.3/15000RPM |
| H63.206.40.0140 | SK 40 | 14 | 27 | 34 | 4.5° | 40 | 44 | 71 | 98 | G6.3/15000RPM |
| H63.206.40.0160 | SK 40 | 16 | 27 | 34 | 4.5° | 40 | 44 | 71 | 98 | G6.3/15000RPM |
| H63.206.40.0200 | SK 40 | 20 | 33 | 42 | 4.5° | 45 | 57 | 81 | 108 | G6.3/15000RPM |
| H65.206.50.0030 | SK 50 | 3 | 9 | 16 | 4.5° | 15 | 44 | 54 | 92 | G6.3/20000RPM |
| H65.206.50.0040 | SK 50 | 4 | 9 | 16 | 4.5° | 15 | 44 | 54 | 92 | G6.3/20000RPM |
| H65.206.50.0050 | SK 50 | 5 | 12 | 19 | 4.5° | 20 | 44 | 54 | 92 | G6.3/20000RPM |
| H65.206.50.0060 | SK 50 | 6 | 12 | 19 | 4.5° | 27 | 44 | 64 | 102 | G6.3/15000RPM |
| H65.206.50.0080 | SK 50 | 8 | 15 | 23 | 4.5° | 37 | 44 | 64 | 102 | G6.3/15000RPM |
| H65.206.50.0100 | SK 50 | 10 | 19 | 27 | 4.5° | 37 | 51 | 66 | 104 | G6.3/15000RPM |
| H65.206.50.0120 | SK 50 | 12 | 24 | 32 | 4.5° | 37 | 51 | 71 | 109 | G6.3/15000RPM |
| H65.206.50.0140 | SK 50 | 14 | 27 | 34 | 4.5° | 40 | 44 | 71 | 109 | G6.3/15000RPM |
| H65.206.50.0160 | SK 50 | 16 | 27 | 34 | 4.5° | 40 | 44 | 71 | 109 | G6.3/15000RPM |
| H65.206.50.0200 | SK 50 | 20 | 33 | 42 | 4.5° | 45 | 57 | 81 | 119 | G6.3/15000RPM |

3. MANDRINI a cono ISO MAS 403 BT

TOOL HOLDERS with ISO cone MAS 403 BT



Portafrese per calettamento a caldo secondo DIN 69882-8
 Shrink-fit chucks DIN 69882-8
 Schrumpfutter DIN 69882-8
 Mandrins de frettage DIN 69882-8

ACCESSORI PER MACCHINE UTENSILI

MAS 403 BT/B

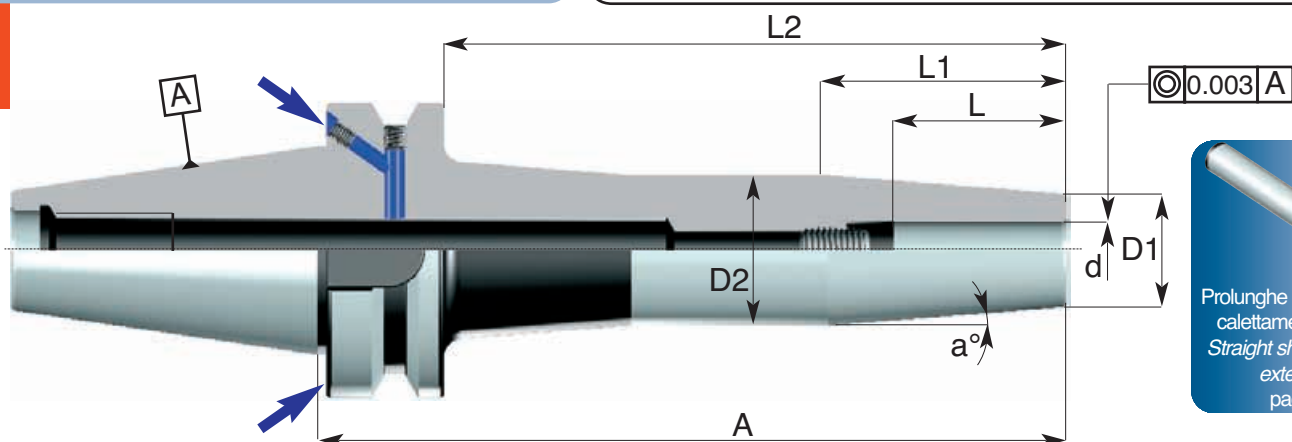


Bilanciatura fine
 Fine balancing



ART: H206 BT/B

3.
14



Prolunghe cilindriche per calettamento a caldo
 Straight shank shrink-fit extensions
 pag: 9.4

| Codice di ord Code | SK | d h6 | D1 | D2 | a° | L | L1 | L2 | A | bilanciatura balancing |
|-----------------------|-------|---------|----|----|------|----|----|-----|-----|---------------------------|
| H63.206.40.0062 | SK 40 | 6 | 12 | 22 | 4.5° | 24 | 64 | 133 | 160 | G6.3/2000ORPM |
| H63.206.40.0082 | SK 40 | 8 | 15 | 23 | 4.5° | 34 | 50 | 133 | 160 | G6.3/2000ORPM |
| H63.206.40.0102 | SK 40 | 10 | 19 | 27 | 4.5° | 37 | 51 | 133 | 160 | G6.3/2000ORPM |
| H63.206.40.0122 | SK 40 | 12 | 24 | 32 | 4.5° | 37 | 51 | 133 | 160 | G6.3/2000ORPM |
| H63.206.40.0162 | SK 40 | 16 | 27 | 34 | 4.5° | 40 | 44 | 133 | 160 | G6.3/2000ORPM |
| H63.206.40.0202 | SK 40 | 20 | 33 | 42 | 4.5° | 45 | 57 | 133 | 160 | G6.3/2000ORPM |
| H65.206.50.0032 | SK 50 | 3 | 9 | 16 | 4.5° | 15 | 44 | 122 | 160 | G6.3/1500ORPM |
| H65.206.50.0042 | SK 50 | 4 | 9 | 16 | 4.5° | 15 | 44 | 122 | 160 | G6.3/1500ORPM |
| H65.206.50.0052 | SK 50 | 5 | 12 | 19 | 4.5° | 20 | 44 | 122 | 160 | G6.3/1500ORPM |
| H65.206.50.0062 | SK 50 | 6 | 12 | 22 | 4.5° | 27 | 63 | 122 | 160 | G6.3/1500ORPM |
| H65.206.50.0082 | SK 50 | 8 | 15 | 23 | 4.5° | 34 | 50 | 122 | 160 | G6.3/1500ORPM |
| H65.206.50.0102 | SK 50 | 10 | 19 | 27 | 4.5° | 37 | 50 | 122 | 160 | G6.3/1500ORPM |
| H65.206.50.0122 | SK 50 | 12 | 24 | 32 | 4.5° | 37 | 51 | 122 | 160 | G6.3/1500ORPM |
| H65.206.50.0142 | SK 50 | 14 | 27 | 34 | 4.5° | 40 | 44 | 122 | 160 | G6.3/1500ORPM |
| H65.206.50.0162 | SK 50 | 16 | 27 | 34 | 4.5° | 40 | 44 | 122 | 160 | G6.3/1500ORPM |
| H65.206.50.0202 | SK 50 | 20 | 33 | 42 | 4.5° | 45 | 57 | 122 | 160 | G6.3/1500ORPM |
| H65.206.50.0252 | SK 50 | 25 | 44 | 53 | 4.5° | 48 | 57 | 122 | 160 | G6.3/1500ORPM |
| H65.206.50.0322 | SK 50 | 32 | 44 | 53 | 4.5° | 48 | 57 | 122 | 160 | G6.3/1500ORPM |

FUORI PRODUZIONE

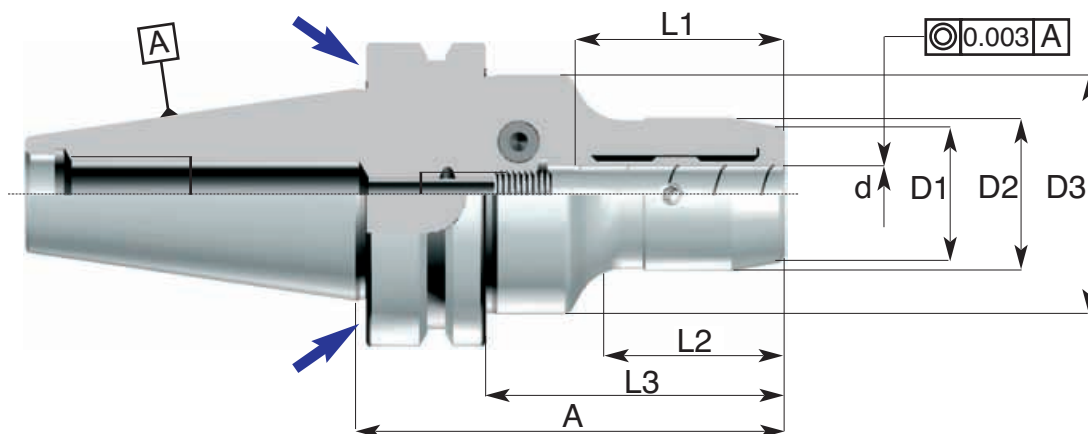


Bilanciatura fine
Fine balancing



MAS 403 BT/B

ART: H63.207 BT/B



3.
15



| Codice di ord Code | SK | d | D1 | D2 | D3 | L1 | L2 | L3 | A | bilanciatura balancing |
|-----------------------|-------|----|----|----|----|----|----|----|-----|---------------------------|
| H63.207.40.0060 | SK 40 | 6 | 22 | 26 | 50 | 35 | 38 | 63 | 90 | G6.3/15000RPM |
| H63.207.40.0080 | SK 40 | 8 | 24 | 28 | 50 | 35 | 38 | 63 | 90 | G6.3/15000RPM |
| H63.207.40.0100 | SK 40 | 10 | 26 | 30 | 50 | 35 | 38 | 63 | 90 | G6.3/15000RPM |
| H63.207.40.0120 | SK 40 | 12 | 28 | 32 | 50 | 44 | 40 | 63 | 90 | G6.3/15000RPM |
| H63.207.40.0140 | SK 40 | 14 | 30 | 34 | 50 | 44 | 40 | 63 | 90 | G6.3/15000RPM |
| H63.207.40.0160 | SK 40 | 16 | 34 | 38 | 50 | 47 | 47 | 65 | 92 | G6.3/15000RPM |
| H63.207.40.0200 | SK 40 | 20 | 38 | 42 | 50 | 49 | 47 | 65 | 92 | G6.3/15000RPM |
| H65.207.50.0060 | SK 50 | 6 | 22 | 26 | 50 | 35 | 38 | 63 | 101 | G6.3/15000RPM |
| H65.207.50.0080 | SK 50 | 8 | 24 | 28 | 50 | 35 | 38 | 63 | 101 | G6.3/15000RPM |
| H65.207.50.0100 | SK 50 | 10 | 26 | 30 | 50 | 35 | 38 | 63 | 101 | G6.3/15000RPM |
| H65.207.50.0120 | SK 50 | 12 | 28 | 32 | 50 | 44 | 40 | 63 | 101 | G6.3/15000RPM |
| H65.207.50.0140 | SK 50 | 14 | 30 | 34 | 50 | 44 | 40 | 63 | 101 | G6.3/15000RPM |
| H65.207.50.0160 | SK 50 | 16 | 34 | 38 | 50 | 47 | 47 | 65 | 103 | G6.3/15000RPM |
| H65.207.50.0200 | SK 50 | 20 | 38 | 42 | 50 | 49 | 47 | 65 | 103 | G6.3/15000RPM |
| H65.207.50.0250 | SK 50 | 25 | 46 | 50 | 70 | 54 | 55 | 80 | 118 | G6.3/15000RPM |
| H65.207.50.0320 | SK 50 | 32 | 52 | 58 | 70 | 58 | 62 | 85 | 123 | G6.3/15000RPM |

3. MANDRINI a cono ISO MAS 403 BT TOOL HOLDERS with ISO cone MAS 403 BT



Mandriani a chiusura idraulica HYDRO-DELTA

Hydraulic clamping chucks HYDRO DELTA

Dehnspannfutter HYDRO DELTA

Mandriins expansibles HYDRO DELTA

ACCESSORI PER MACCHINE UTENSILI

FUORI PRODUZIONE

MAS 403 BT/B

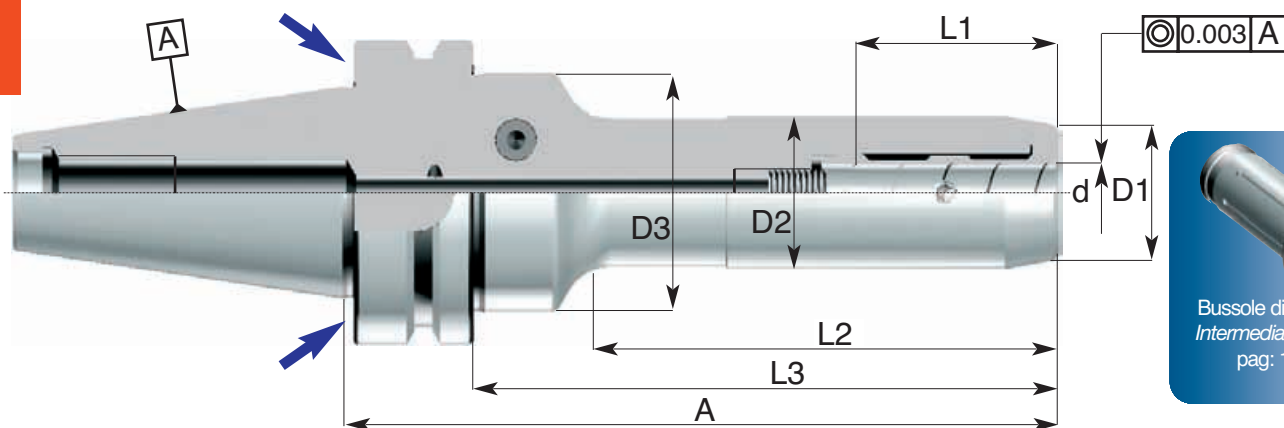


Bilanciatura fine
Fine balancing



ART: H63.207 BT/B

3.
16



| Codice di ord Code | SK | d | D1 | D2 | D3 | L1 | L2 | L3 | A | bilanciatura balancing |
|-----------------------|-------|----|----|----|----|----|-----|-----|-----|---------------------------|
| H63.207.40.0062 | SK 40 | 6 | 22 | 26 | 50 | 35 | 98 | 123 | 150 | G6.3/15000RPM |
| H63.207.40.0064 | SK 40 | 6 | 22 | 26 | 50 | 35 | 148 | 173 | 200 | G6.3/15000RPM |
| H63.207.40.0082 | SK 40 | 8 | 24 | 28 | 50 | 35 | 98 | 123 | 150 | G6.3/15000RPM |
| H63.207.40.0084 | SK 40 | 8 | 24 | 28 | 50 | 35 | 148 | 173 | 200 | G6.3/15000RPM |
| H63.207.40.0102 | SK 40 | 10 | 26 | 30 | 50 | 35 | 98 | 123 | 150 | G6.3/15000RPM |
| H63.207.40.0104 | SK 40 | 10 | 26 | 30 | 50 | 35 | 148 | 173 | 200 | G6.3/15000RPM |
| H63.207.40.0122 | SK 40 | 12 | 28 | 32 | 50 | 44 | 98 | 123 | 150 | G6.3/15000RPM |
| H63.207.40.0124 | SK 40 | 12 | 28 | 32 | 50 | 44 | 148 | 173 | 200 | G6.3/15000RPM |
| H63.207.40.0142 | SK 40 | 14 | 30 | 34 | 50 | 44 | 98 | 123 | 150 | G6.3/15000RPM |
| H63.207.40.0144 | SK 40 | 14 | 30 | 34 | 50 | 44 | 148 | 173 | 200 | G6.3/15000RPM |
| H63.207.40.0162 | SK 40 | 16 | 34 | 38 | 50 | 47 | 98 | 123 | 150 | G6.3/15000RPM |
| H63.207.40.0164 | SK 40 | 16 | 34 | 38 | 50 | 47 | 148 | 173 | 200 | G6.3/15000RPM |
| H63.207.40.0202 | SK 40 | 20 | 38 | 42 | 50 | 47 | 98 | 123 | 150 | G6.3/15000RPM |
| H63.207.40.0204 | SK 40 | 20 | 38 | 42 | 50 | 47 | 148 | 173 | 200 | G6.3/15000RPM |
| H65.207.50.0062 | SK 50 | 6 | 22 | 26 | 50 | 35 | 87 | 112 | 150 | G6.3/15000RPM |
| H65.207.50.0064 | SK 50 | 6 | 22 | 26 | 50 | 35 | 137 | 162 | 200 | G6.3/15000RPM |
| H65.207.50.0082 | SK 50 | 8 | 24 | 28 | 50 | 35 | 87 | 112 | 150 | G6.3/15000RPM |
| H65.207.50.0084 | SK 50 | 8 | 24 | 28 | 50 | 35 | 137 | 162 | 200 | G6.3/15000RPM |
| H65.207.50.0102 | SK 50 | 10 | 26 | 30 | 50 | 35 | 87 | 112 | 150 | G6.3/15000RPM |
| H65.207.50.0104 | SK 50 | 10 | 26 | 30 | 50 | 35 | 137 | 162 | 200 | G6.3/15000RPM |
| H65.207.50.0122 | SK 50 | 12 | 28 | 32 | 50 | 44 | 87 | 112 | 150 | G6.3/15000RPM |
| H65.207.50.0124 | SK 50 | 12 | 28 | 32 | 50 | 44 | 137 | 162 | 200 | G6.3/15000RPM |
| H65.207.50.0142 | SK 50 | 14 | 30 | 34 | 50 | 44 | 87 | 112 | 150 | G6.3/15000RPM |
| H65.207.50.0144 | SK 50 | 14 | 30 | 34 | 50 | 44 | 137 | 162 | 200 | G6.3/15000RPM |
| H65.207.50.0162 | SK 50 | 16 | 34 | 38 | 50 | 47 | 87 | 112 | 150 | G6.3/15000RPM |
| H65.207.50.0164 | SK 50 | 16 | 34 | 38 | 50 | 47 | 137 | 162 | 200 | G6.3/15000RPM |
| H65.207.50.0202 | SK 50 | 20 | 38 | 42 | 50 | 47 | 87 | 112 | 150 | G6.3/15000RPM |
| H65.207.50.0204 | SK 50 | 20 | 38 | 42 | 50 | 47 | 137 | 162 | 200 | G6.3/15000RPM |
| H65.207.50.0252 | SK 50 | 25 | 46 | 50 | 70 | 54 | 87 | 112 | 150 | G6.3/15000RPM |
| H65.207.50.0254 | SK 50 | 25 | 46 | 50 | 70 | 54 | 137 | 162 | 200 | G6.3/15000RPM |
| H65.207.50.0322 | SK 50 | 32 | 52 | 58 | 70 | 58 | 87 | 112 | 150 | G6.3/15000RPM |
| H65.207.50.0324 | SK 50 | 32 | 52 | 58 | 70 | 58 | 137 | 162 | 200 | G6.3/15000RPM |

ACCESSORI PER MACCHINE UTENSILI

Mandrini portatestine filetate
 Chucks for threaded heads
 Mandrins pour têtes filetées
 Spannfutter für Gewindeköpfe



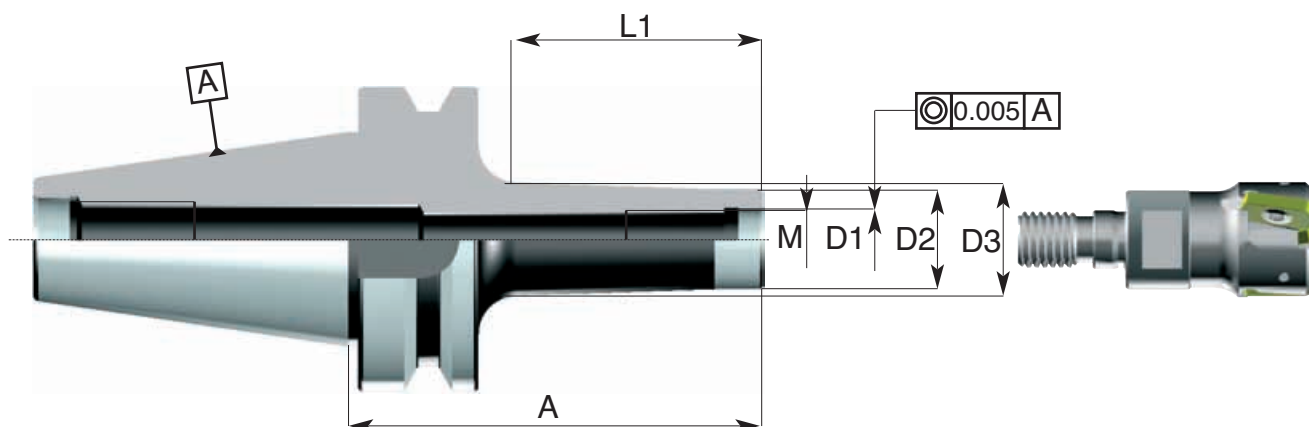
Bilanciatura fine
 Fine balancing



MAS 403 BT

ART: 267 BT

3.
17



| Codice di ord Code | SK | M | D1 | D2 | D3 | L1 | A | bilanciatura balancing |
|-----------------------|-------|-----|------|------|----|-----|-----|---------------------------|
| 063.267.40.0062 | SK 40 | M6 | 6.5 | 9.7 | 20 | 51 | 86 | G6.3/15000RPM |
| 063.267.40.0064 | SK 40 | M6 | 6.5 | 9.7 | 23 | 71 | 106 | G6.3/15000RPM |
| 063.267.40.0082 | SK 40 | M8 | 8.5 | 12.7 | 23 | 51 | 86 | G6.3/15000RPM |
| 063.267.40.0084 | SK 40 | M8 | 8.5 | 12.7 | 23 | 71 | 106 | G6.3/15000RPM |
| 063.267.40.0100 | SK 40 | M10 | 10.5 | 17.7 | 20 | 31 | 66 | G6.3/15000RPM |
| 063.267.40.0102 | SK 40 | M10 | 10.5 | 17.7 | 25 | 51 | 86 | G6.3/15000RPM |
| 063.267.40.0104 | SK 40 | M10 | 10.5 | 17.7 | 28 | 71 | 106 | G6.3/15000RPM |
| 063.267.40.0106 | SK 40 | M10 | 10.5 | 17.7 | 28 | 91 | 126 | G6.3/15000RPM |
| 063.267.40.0120 | SK 40 | M12 | 12.5 | 20.7 | 24 | 31 | 66 | G6.3/15000RPM |
| 063.267.40.0122 | SK 40 | M12 | 12.5 | 20.7 | 24 | 51 | 86 | G6.3/15000RPM |
| 063.267.40.0124 | SK 40 | M12 | 12.5 | 20.7 | 31 | 71 | 106 | G6.3/15000RPM |
| 063.267.40.0126 | SK 40 | M12 | 12.5 | 20.7 | 31 | 91 | 126 | G6.3/15000RPM |
| 063.267.40.0160 | SK 40 | M16 | 17 | 28.7 | 34 | 31 | 66 | G6.3/15000RPM |
| 063.267.40.0162 | SK 40 | M16 | 17 | 28.7 | 34 | 51 | 86 | G6.3/15000RPM |
| 063.267.40.0164 | SK 40 | M16 | 17 | 28.7 | 34 | 71 | 106 | G6.3/15000RPM |
| 063.267.40.0166 | SK 40 | M16 | 17 | 28.7 | 34 | 91 | 126 | G6.3/15000RPM |
| 063.267.40.0168 | SK 40 | M16 | 17 | 28.7 | 34 | 150 | 185 | G6.3/15000RPM |
| 063.267.40.0169 | SK 40 | M16 | 17 | 28.7 | 34 | 200 | 235 | G6.3/15000RPM |

3. MANDRINI a cono ISO MAS 403 BT

TOOL HOLDERS with ISO cone MAS 403 BT



Mandrini portatestine filettate
Chucks for threaded heads
Mandrins pour têtes filetées
Spannfutter für Gewindeköpfe

ACCESSORI PER MACCHINE UTENSILI

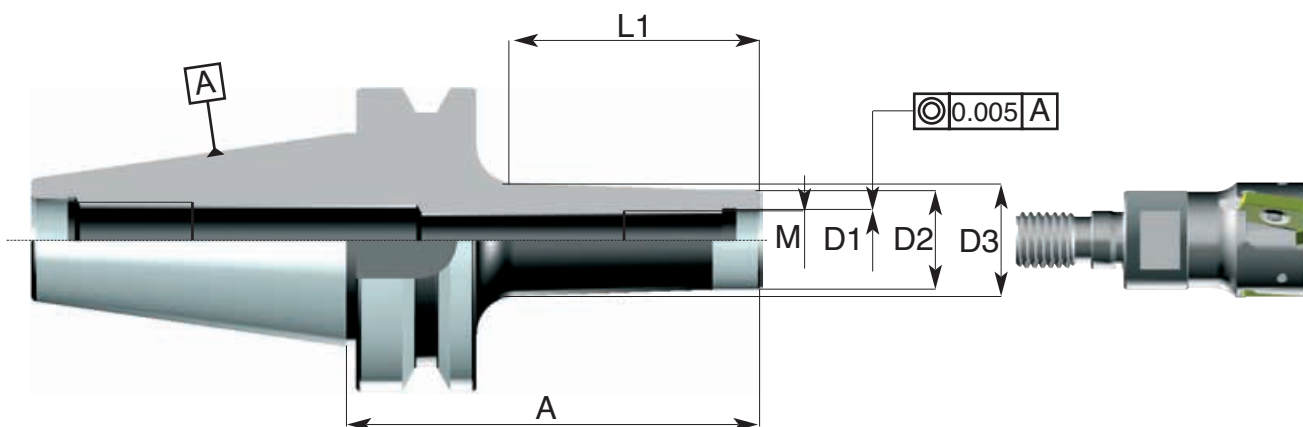


MAS 403 BT



Bilanciatura fine
Fine balancing

ART: 267 BT



| Codice di ord Code | SK | M | D1 | D2 | D3 | L1 | A | bilanciatura balancing |
|-----------------------|-------|-----|------|------|----|-----|-----|---------------------------|
| 065.267.50.0100 | SK 50 | M10 | 10.5 | 17.7 | 20 | 31 | 77 | G6.3/15000RPM |
| 065.267.50.0102 | SK 50 | M10 | 10.5 | 17.7 | 25 | 51 | 97 | G6.3/15000RPM |
| 065.267.50.0104 | SK 50 | M10 | 10.5 | 17.7 | 28 | 71 | 117 | G6.3/15000RPM |
| 065.267.50.0106 | SK 50 | M10 | 10.5 | 17.7 | 31 | 100 | 146 | G6.3/15000RPM |
| 065.267.50.0120 | SK 50 | M12 | 12.5 | 20.7 | 24 | 31 | 77 | G6.3/15000RPM |
| 065.267.50.0122 | SK 50 | M12 | 12.5 | 20.7 | 24 | 51 | 97 | G6.3/15000RPM |
| 065.267.50.0124 | SK 50 | M12 | 12.5 | 20.7 | 31 | 71 | 117 | G6.3/15000RPM |
| 065.267.50.0126 | SK 50 | M12 | 12.5 | 20.7 | 31 | 101 | 147 | G6.3/15000RPM |
| 065.267.50.0128 | SK 50 | M12 | 12.5 | 20.7 | 41 | 150 | 196 | G6.3/15000RPM |
| 065.267.50.0160 | SK 50 | M16 | 17 | 28.7 | 29 | 31 | 77 | G6.3/15000RPM |
| 065.267.50.0162 | SK 50 | M16 | 17 | 28.7 | 34 | 51 | 97 | G6.3/15000RPM |
| 065.267.50.0164 | SK 50 | M16 | 17 | 28.7 | 34 | 71 | 117 | G6.3/15000RPM |
| 065.267.50.0166 | SK 50 | M16 | 17 | 28.7 | 41 | 100 | 146 | G6.3/15000RPM |
| 065.267.50.0168 | SK 50 | M16 | 17 | 28.7 | 52 | 150 | 196 | G6.3/15000RPM |
| 065.267.50.0169 | SK 50 | M16 | 17 | 28.7 | 57 | 200 | 246 | G6.3/15000RPM |

ACCESSORI PER MACCHINE UTENSILI



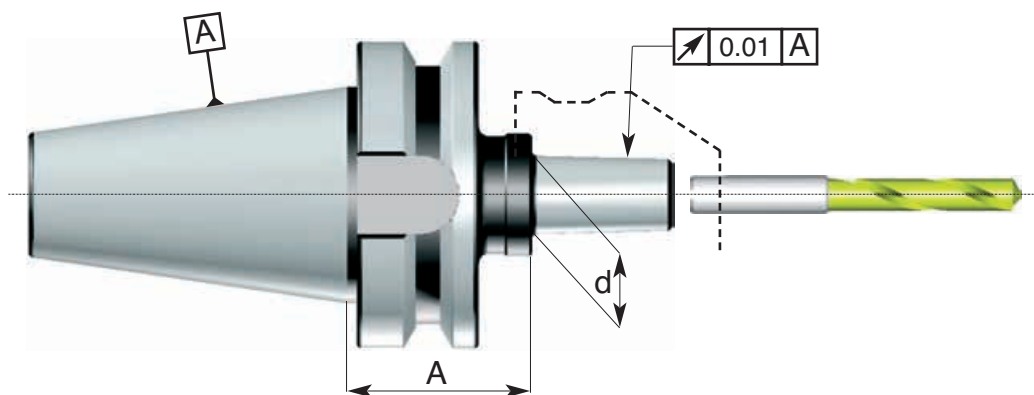
Mandriani portamorsetti autoserranti DIN 238
Taper shafts for drill chucks DIN 238
Bohrfutteraufnahmen DIN 238
Porte-mandrins de perceuses DIN 238



MAS 403 BT

ART: 220 BT

3.
19



| Codice di ord <i>Code</i> | SK | Tipo Din | A | d |
|------------------------------|-------|-------------|----|--------|
| 060.220.30.0120 | SK 30 | B 12 | 35 | 12.065 |
| 060.220.30.0160 | SK 30 | B 16 | 35 | 15.733 |
| 061.220.35.0120 | SK 35 | B 12 | 35 | 12.065 |
| 061.220.35.0160 | SK 35 | B 16 | 35 | 15.733 |
| 063.220.40.0120 | SK 40 | B 12 | 50 | 12.065 |
| 063.220.40.0160 | SK 40 | B 16 | 50 | 15.733 |
| 063.220.40.0180 | SK 40 | B 18 | 50 | 17.780 |
| 065.220.50.0160 | SK 50 | B 16 | 70 | 15.733 |
| 065.220.50.0180 | SK 50 | B 18 | 70 | 17.780 |

3. MANDRINI a cono ISO MAS 403 BT

TOOL HOLDERS with ISO cone MAS 403 BT



Mandrini portapunte integrali
 Integral drill chucks
 Kurzbohrfutter
 Mandrins porte-forets intégraux

ACCESSORI PER MACCHINE UTENSILI

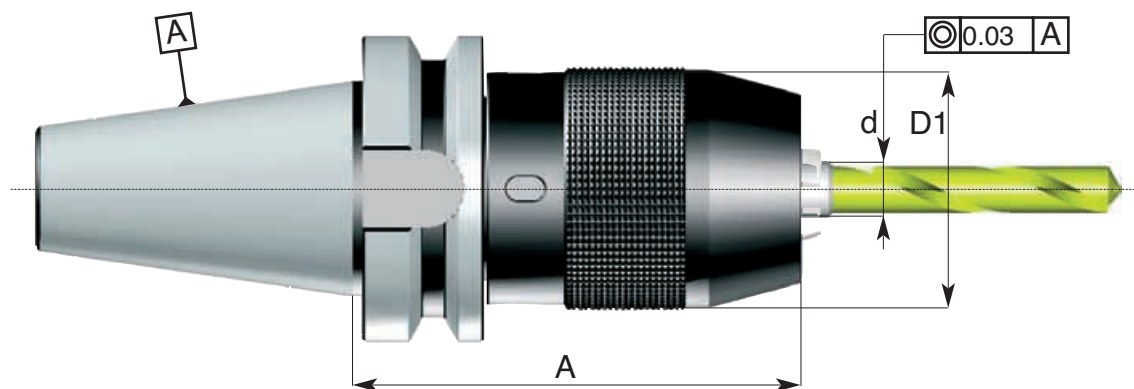


MAS 403 BT



ART: 221 BT

3.
20



| Codice di ord Code | SK | A | D | capacità "d" Capacity range "d" |
|-----------------------|-------|-----|----|------------------------------------|
| 063.221.40.1301 | SK 40 | 95 | 50 | 1-13 |
| 063.221.40.1603 | SK 40 | 100 | 57 | 3-16 |
| 065.221.50.1301 | SK 50 | 105 | 50 | 1-13 |
| 065.221.50.1603 | SK 50 | 108 | 57 | 3-16 |

ADATTI SOLO A ROTAZIONE DESTRA
 SUITABLE FOR RIGHT ROTATION ONLY

Forniti completi di chiave
 Supplied together with key

ACCESSORI PER MACCHINE UTENSILI

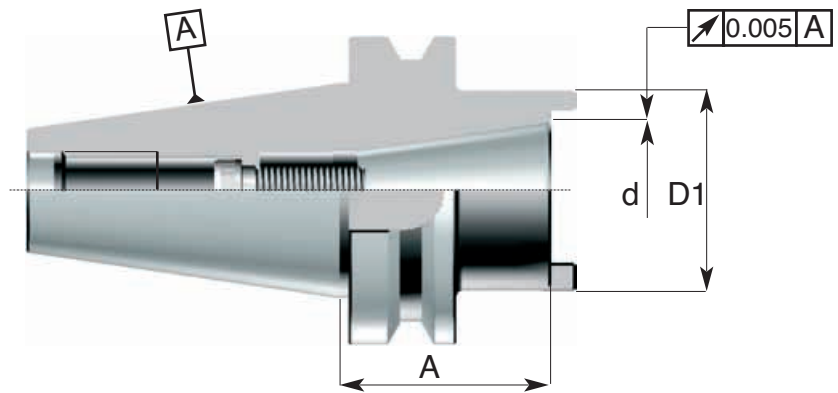
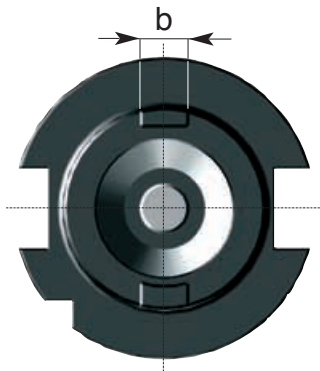


Riduzioni da cono BT a cono ISO DIN 2080 e DIN 69871
 Adaptors sleeves BT to ISO cone DIN 2080 and DIN 69871
 Zwischenhülsen BT zu ISO Steilkegel DIN 2080 und DIN 69871
 Douilles de réduction cône BT à ISO DIN 2080 et DIN 69871



MAS 403 BT

ART: 250 BT



3.
21

| Codice di ord Code | BT | SK | d | A | D1 | b | Vite Screw | Ghiera Nut |
|-----------------------|-------|-------|-------|-----|----|------|---------------|---------------|
| 063.250.40.0300 | SK 40 | SK 30 | 31,75 | 50 | 52 | 15,9 | 252.00.1230.B | 252.00.1810 |
| 065.250.50.0300 | SK 50 | SK 30 | 31,75 | 50 | 52 | 15,9 | 252.00.1230 | 261.24.0400 |
| 065.250.50.0400 | SK 50 | SK 40 | 44,45 | 70 | 70 | 15,9 | 252.00.1640.B | 261.24.0400 |
| 065.250.50.0450 | SK 50 | SK 45 | 57,17 | 100 | 80 | 19 | 252.00.2050.B | 252.00.3013 |

per DIN 69871 specificare nell'ordine la vite
 for DIN 69871 specify the screw code in the order



| Codice di ord Code | Vite per DIN 69871 Screw for DIN 69871 |
|-----------------------|---|
| 063.250.40.0300 | 252.00.1250.B |
| 065.250.50.0300 | 252.00.1250 |
| 065.250.50.0400 | 252.00.1670.B |
| 065.250.50.0450 | 252.00.2080.B |



3. MANDRINI a cono ISO MAS 403 BT TOOL HOLDERS with ISO cone MAS 403 BT



Riduzioni da cono ISO a cono ISO naso mandrino DIN 2079

Adaptors sleeves ISO to ISO cone with DIN 2079 spindle nose
Zwischenhülsen ISO zu ISO Steilkegel mit DIN 2079 Spindelkopf
Douilles de réduction cône ISO à cône ISO avec nez de broche DIN 2079

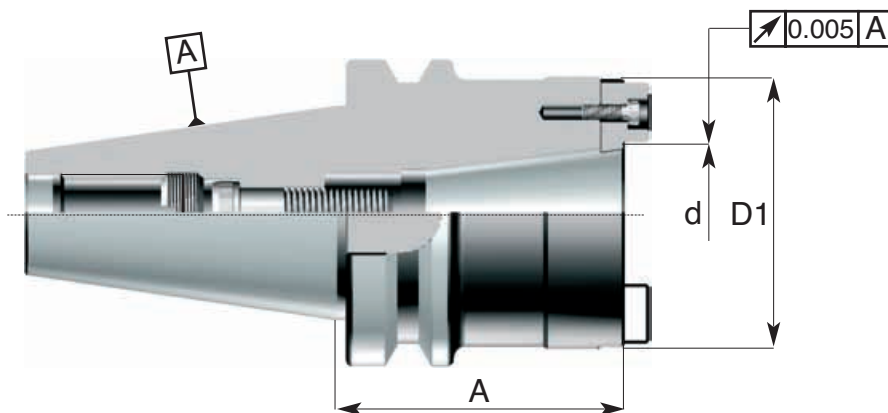
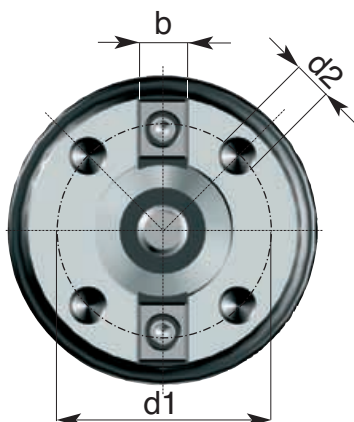
ACCESSORI PER MACCHINE UTENSILI

MAS 403 BT



ART:252 BT

3.
22



| Codice di ord Code | BT | SK | A | D1 h6 | d1 | d2 | b | Tassello Tenon | Vite Screw | Ghiera Nut |
|-----------------------|-------|-------|----|----------|-------|-----|------|-------------------|---------------|---------------|
| 063.252.40.0300 | SK 40 | SK 30 | 55 | 69.832 | 54 | M10 | 15.9 | 192.01 | 252.00.1245.B | 252.00.1230 |
| 065.252.50.0400 | SK 50 | SK 40 | 75 | 88.882 | 66.70 | M12 | 15.9 | 192.02 | 252.00.1640.B | 261.24.0400 |
| 065.252.50.0450 | SK 50 | SK 45 | 90 | 101.60 | 80.00 | M12 | 19 | 192.45.0190 | 252.00.2050 | 252.00.3013 |

Pag. 12/26



ACCESSORI PER MACCHINE UTENSILI



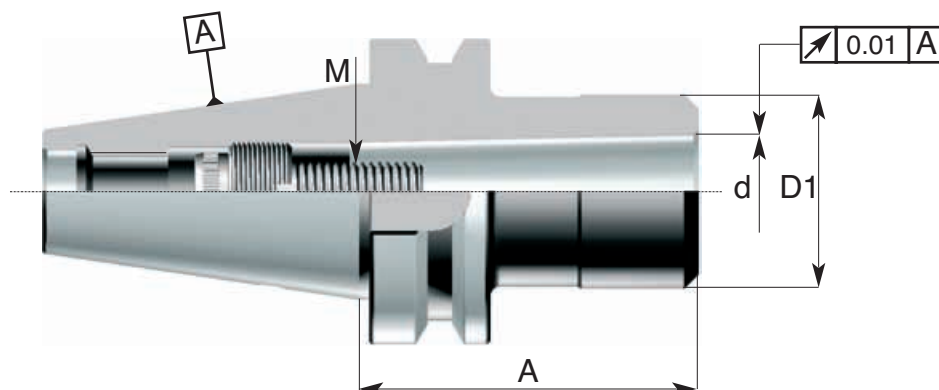
Riduzioni da cono ISO a cono Morse DIN 6364 B per frese con vite interna
 Morse taper adaptors sleeves for cutters with internal screw - DIN 6364 B
 Zwischenhülsen für Morsekegel mit Auzugsgewinde - DIN 6364 B
 Douilles de réduction à cône Morse pour fraises avec vis - DIN 6364 B



MAS 403 BT

ART: 261 BT

3.
23



| Codice di ord Code | SK | Cono Morse | d | A | D1 | M | Vite Screw | Ghiera Nut |
|-----------------------|-------|------------|--------|-----|----|-----|---------------|---------------|
| 063.261.40.0100 | SK 40 | Morse 1 | 12.065 | 40 | 25 | 6M | 261.00.0625 | 261.16.0100 |
| 063.261.40.0200 | SK 40 | Morse 2 | 17.780 | 50 | 32 | 10M | 261.00.1030.B | 261.16.0200 |
| 063.261.40.0300 | SK 40 | Morse 3 | 23.825 | 70 | 40 | 12M | 261.00.1240 | 261.00.1220 |
| 063.261.40.0400 | SK 40 | Morse 4 | 31.267 | 95 | 50 | 16M | 261.00.1650.E | 261.00.1626 |
| 065.261.50.0100 | SK 50 | Morse 1 | 12.065 | 50 | 25 | 6M | 261.00.0645 | 261.24.0100 |
| 065.261.50.0200 | SK 50 | Morse 2 | 17.780 | 50 | 32 | 10M | 261.00.1040 | 261.24.0200 |
| 065.261.50.0300 | SK 50 | Morse 3 | 23.825 | 60 | 40 | 12M | 261.00.1240 | 261.24.0300 |
| 065.261.50.0400 | SK 50 | Morse 4 | 31.267 | 80 | 50 | 16M | 261.00.1645B | 261.24.0400 |
| 065.261.50.0500 | SK 50 | Morse 5 | 44.399 | 100 | 65 | 20M | 261.00.2050 | 261.00.2033 |



3. MANDRINI a cono ISO MAS 403 BT

TOOL HOLDERS with ISO cone MAS 403 BT



Riduzioni da cono ISO a cono Morse per punte tipo normale e prolungato

Adaptors sleeves from ISO cone to Morse cone for tools with driving shank

Zwischenhülsen mit Steilkegel für Werkzeuge mit Morsekegel und Austreibklappen

Douilles de réduction de cône ISO à cône Morse pour outils munies de dents d'entraînement

ACCESSORI PER MACCHINE UTENSILI

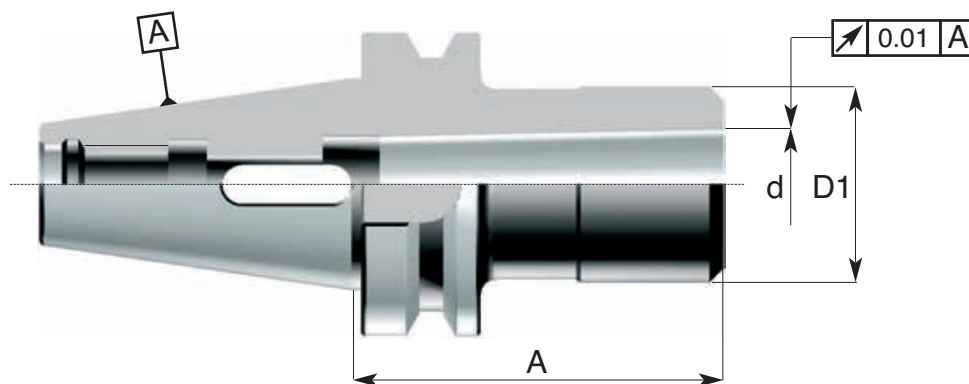
MAS 403 BT



ART: 262 BT



3.
24



| Codice di ord Code | SK | Cono Morse | d | A | D1 | Combi* |
|-----------------------|-------|------------|--------|-----|----|--------|
| 060.262.30.0100 | SK 30 | Morse 1 | 12.065 | 50 | 25 | PF |
| 060.262.30.0200 | SK 30 | Morse 2 | 17.780 | 60 | 30 | - |
| 060.262.30.0300 | SK 30 | Morse 3 | 23.825 | 75 | 40 | - |
| 063.262.40.0100 | SK 40 | Morse 1 | 12.065 | 45 | 25 | PF |
| 063.262.40.0102 | SK 40 | Morse 1 | 12.065 | 120 | 25 | PF |
| 063.262.40.0200 | SK 40 | Morse 2 | 17.780 | 50 | 32 | PF |
| 063.262.40.0202 | SK 40 | Morse 2 | 17.780 | 135 | 32 | PF |
| 063.262.40.0300 | SK 40 | Morse 3 | 23.825 | 70 | 40 | PF |
| 063.262.40.0302 | SK 40 | Morse 3 | 23.825 | 150 | 40 | - |
| 063.262.40.0400 | SK 40 | Morse 4 | 31.267 | 90 | 50 | - |
| 063.262.40.0402 | SK 40 | Morse 4 | 31.267 | 165 | 50 | - |
| 065.262.50.0100 | SK 50 | Morse 1 | 12.065 | 45 | 25 | PF |
| 065.262.50.0102 | SK 50 | Morse 1 | 12.065 | 120 | 25 | PF |
| 065.262.50.0200 | SK 50 | Morse 2 | 17.780 | 50 | 32 | PF |
| 065.262.50.0202 | SK 50 | Morse 2 | 17.780 | 135 | 32 | PF |
| 065.262.50.0300 | SK 50 | Morse 3 | 23.825 | 63 | 40 | PF |
| 065.262.50.0302 | SK 50 | Morse 3 | 23.825 | 150 | 40 | PF |
| 065.262.50.0304 | SK 50 | Morse 3 | 23.825 | 180 | 40 | PF |
| 065.262.50.0400 | SK 50 | Morse 4 | 31.267 | 75 | 50 | PF |
| 065.262.50.0402 | SK 50 | Morse 4 | 31.267 | 180 | 50 | PF |
| 065.262.50.0500 | SK 50 | Morse 5 | 44.399 | 105 | 70 | - |

*Le riduzioni PF sono adatte anche per frese con attacco DIN 228-A; per i tipi ISO 30 CM2-3, ISO 40 CM3-4, ISO 45 CM5 e ISO 50 CM5 è necessario l'uso del tirante lungo (vedi sezione tiranti)

*PF adaptors are suitable for clamping MT-shank mills; for ISO 30 MK2-3, ISO 40 MK3-4, ISO 45 MK5 e ISO 50 MK5 long pull stud is required (see pull studs section)

ACCESSORI PER MACCHINE UTENSILI

Riduzioni da cono ISO a cono Morse per punte

Morse taper adaptors sleeves for drills with driving shank

Zwischenhülsen für Morsekegel mit Austreibblappen

Douilles de réduction à cône Morse pour forets avec dents d'entraînement



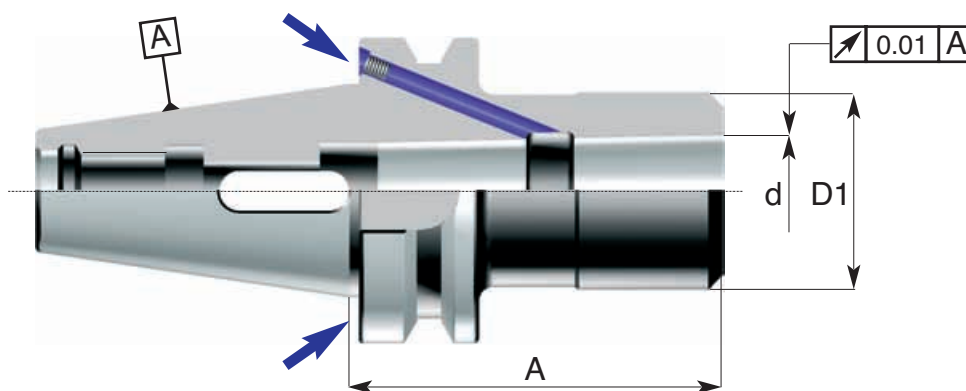
FUORI PRODUZIONE



MAS 403 BT/B

ART: H262 BT/B

3.
25



| Codice di ord Code | SK | Cono Morse | d | A | D1 | Combi* |
|-----------------------|-------|------------|--------|-----|----|--------|
| H63.262.40.0100 | SK 40 | Morse 1 | 12.065 | 45 | 25 | PF |
| H63.262.40.0200 | SK 40 | Morse 2 | 17.780 | 50 | 32 | PF |
| H63.262.40.0300 | SK 40 | Morse 3 | 23.825 | 70 | 40 | PF |
| H63.262.40.0400 | SK 40 | Morse 4 | 31.267 | 90 | 50 | PF |
| H65.262.50.0100 | SK 50 | Morse 1 | 12.065 | 45 | 25 | PF |
| H65.262.50.0200 | SK 50 | Morse 2 | 17.780 | 50 | 32 | PF |
| H65.262.50.0300 | SK 50 | Morse 3 | 23.825 | 63 | 40 | PF |
| H65.262.50.0400 | SK 50 | Morse 4 | 31.267 | 75 | 50 | PF |
| H65.262.50.0500 | SK 50 | Morse 5 | 44.399 | 105 | 70 | PF |

*Le riduzioni PF sono adatte anche per frese con attacco DIN 228-A; per i tipi ISO 30 CM2-3, ISO 40 CM3-4, ISO 45 CM5 e ISO 50 CM5 è necessario l'uso del tirante lungo (vedi sezione tiranti)

*PF adaptors are suitable for clamping mills with MT-shank; for ISO 30 MK2-3, ISO 40 MK3-4, ISO 45 MK5 e ISO 50 MK5 is necessary the long pull stud (see pull studs section)

3. MANDRINI a cono ISO MAS 403 BT

TOOL HOLDERS with ISO cone MAS 403 BT



Barre semifinite con tratto cilindrico privo di cementazione per esecuzioni speciali
 Unfinished taper-shank blanks for special applications
 Rohlinge für spezielle Anwendungen
 Ebauches pour applications spéciales

ACCESSORI PER MACCHINE UTENSILI

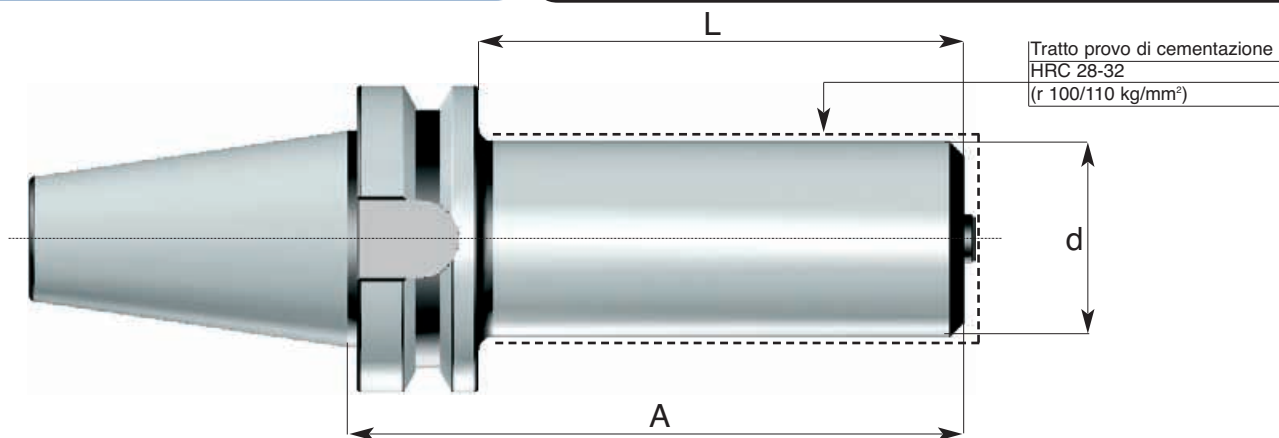


MAS 403 BT



ART: 424 BT

3.
26



| Codice di ord Code | SK | d | A | L |
|-----------------------|-------|-----|-----|-----|
| 063.424.40.0402 | SK 40 | 40 | 197 | 170 |
| 063.424.40.0404 | SK 40 | 40 | 277 | 250 |
| 063.424.40.0630 | SK 40 | 63 | 177 | 150 |
| 063.424.40.0632 | SK 40 | 63 | 277 | 250 |
| 065.424.50.0502 | SK 50 | 50 | 247 | 210 |
| 065.424.50.0504 | SK 50 | 50 | 352 | 315 |
| 065.424.50.0630 | SK 50 | 63 | 188 | 150 |
| 065.424.50.0632 | SK 50 | 63 | 288 | 250 |
| 065.424.50.0634 | SK 50 | 63 | 438 | 400 |
| 065.424.50.1000 | SK 50 | 100 | 288 | 250 |
| 065.424.50.1002 | SK 50 | 100 | 438 | 400 |

ACCESSORI PER MACCHINE UTENSILI

Mandrini a forte serraggio
 High clamping chucks
 Kraftspannfutter
 Mandrins à fort serrage

FUORI PRODUZIONE

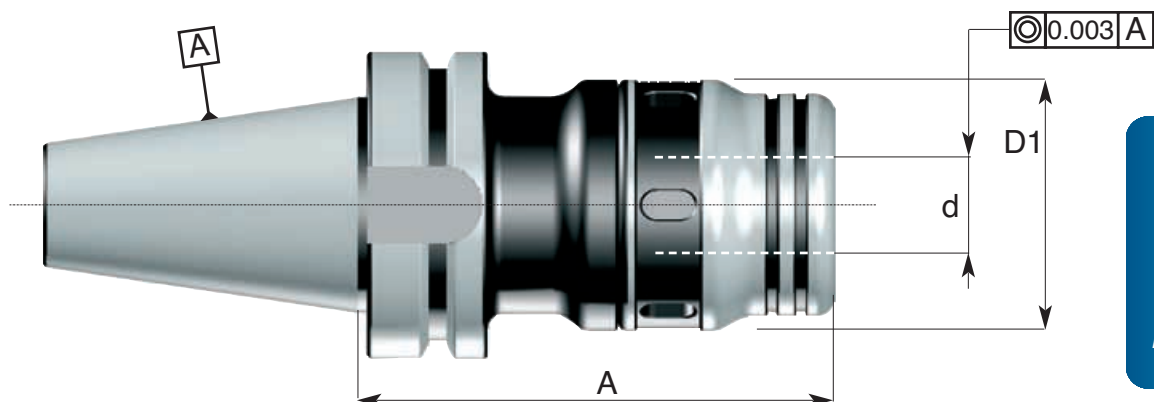


Prebilanciato
 Prebalanced
 G6.3 / 8000rpm



MAS 403 BT

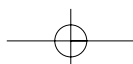
ART: 603.BT
 standard / standard lenght



3.
27



| Codice di ord Code | SK | d | D1 | A | Boccola di riduzione Reduction bushes |
|-----------------------|-------|----|----|-----|--|
| 063.603.40.0200 | SK 40 | 20 | 54 | 105 | 239.20... |
| 063.603.40.0320 | SK 40 | 32 | 72 | 105 | 239.32... |
| 063.603.40.0322 | SK 40 | 32 | 72 | 135 | 239.32... |
| 065.603.50.0200 | SK 50 | 20 | 54 | 105 | 239.20... |
| 065.603.50.0320 | SK 50 | 32 | 72 | 105 | 239.32... |
| 065.603.50.0322 | SK 50 | 32 | 72 | 135 | 239.32... |



3. MANDRINI a cono ISO MAS 403 BT

TOOL HOLDERS with ISO cone MAS 403 BT



Mandrini portapinzine EOC tipo normale e prolungato DIN 6388

Collet chucks EOC - DIN 6388

Spannzangenhalter EOC - DIN 6388

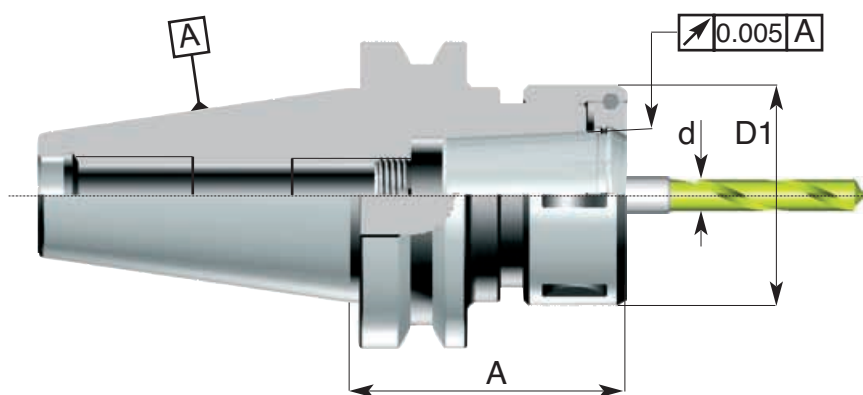
Mandrins porte-pinces EOC - DIN 6388

ACCESSORI PER MACCHINE UTENSILI

MAS 403 BT



ART:601 BT



| Codice di ord Code | SK | EOC | A | D1 | Cap. di chiusura Pinza "d" Capacity range "d" | Ghiera Nut |
|-----------------------|-------|-----|-----|----|--|---------------|
| 063.601.40.0350 | SK 40 | 25 | 75 | 60 | da 3 a 25 | 245.48.0350 |
| 063.601.40.0352 | SK 40 | 25 | 120 | 60 | da 3 a 25 | 245.48.0350 |
| 063.601.40.0440 | SK 40 | 32 | 85 | 72 | da 4 a 32 | 245.60.0440 |
| 063.601.40.0442 | SK 40 | 32 | 120 | 72 | da 4 a 32 | 245.60.0440 |
| 065.601.50.0350 | SK 50 | 25 | 85 | 60 | da 3 a 25 | 245.48.0350 |
| 065.601.50.0352 | SK 50 | 25 | 120 | 60 | da 3 a 25 | 245.48.0350 |
| 065.601.50.0440 | SK 50 | 32 | 90 | 72 | da 4 a 32 | 245.60.0440 |
| 065.601.50.0442 | SK 50 | 32 | 130 | 72 | da 4 a 32 | 245.60.0440 |

ACCESSORI PER MACCHINE UTENSILI



Mandrini portapinze Delta per pinze rif. art.209

Delta collet chucks for collets ref. art.209

Delta Spannzangenhalter für Spannzangen ref. art.209

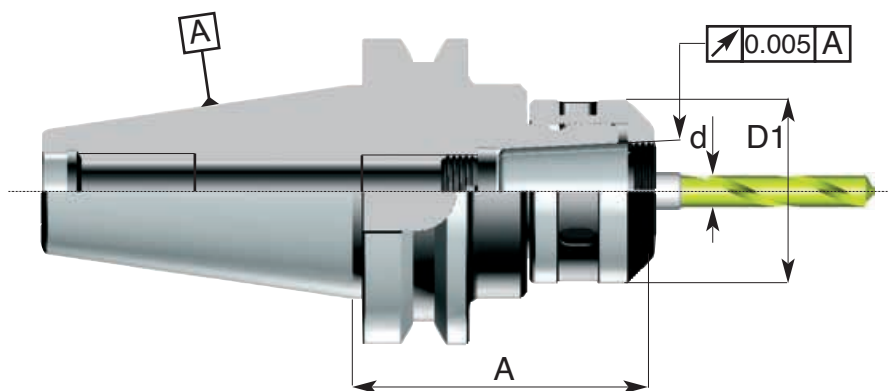
Mandrins porte-pinces Delta pour pinces ref. art.209



MAS 403 BT

ART: 605 BT

3.
29



| Codice di ord Code | SK | A | D1 | Cap. di chiusura Pinza "d" Capacity range "d" | Tipo pinza Collet | Ghiera Nut |
|-----------------------|-------|----|----|--|----------------------|---------------|
| 063.605.40.0320 | SK 40 | 75 | 58 | da 4 a 20 | 209.20 | 245.02 |
| 063.605.40.0440 | SK 40 | 78 | 73 | da 4 a 32 | 209.30 | 245.03 |
| 065.605.50.0320 | SK 50 | 90 | 58 | da 4 a 20 | 209.20 | 245.02 |
| 065.605.50.0440 | SK 50 | 95 | 73 | da 4 a 32 | 209.30 | 245.03 |

3. MANDRINI a cono ISO MAS 403 BT TOOL HOLDERS with ISO cone MAS 403 BT



Mandriini portapinzine ER DIN 6499 - ghiera standard

Collet chucks ER DIN 6499 - standard nut

Spannzangenhalter ER DIN 6499 - standard Spannmutter

Mandriini porte-pinzine ER DIN 6499 - écrou standard

MAS 403 BT



Prebilanciato
Prebalanced
G6.3 / 8000rpm



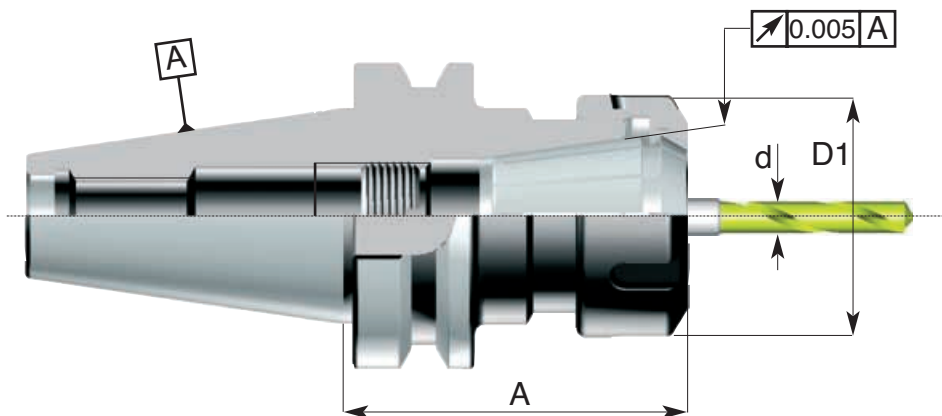
Assortimento in cassetta pag: 3.33
Kit pag. 3.33

ACCESSORI PER MACCHINE UTENSILI



ART:607 BT
ghiera standard / standard nut

3.
30



| Codice di ord Code | SK | ER | A | D1 | Cap. di chiusura Pinza "d" Capacity range "d" | Ghiera Nut |
|-----------------------|-------|-------|-----|----|--|---------------|
| 060.607.30.0160 | SK 30 | ER 16 | 60 | 28 | da 0,5 a 10 | 245.22.ER16 |
| 060.607.30.0162 | SK 30 | ER 16 | 100 | 28 | da 0,5 a 10 | 245.22. ER16 |
| 060.607.30.0200 | SK 30 | ER 20 | 60 | 34 | da 1 a 13 | 245.25. ER20 |
| 060.607.30.0250 | SK 30 | ER 25 | 60 | 42 | da 1 a 16 | 245.32.ER25 |
| 060.607.30.0252 | SK 30 | ER 25 | 100 | 42 | da 1 a 16 | 245.32.ER25 |
| 060.607.30.0320 | SK 30 | ER 32 | 60 | 50 | da 1 a 20 | 245.40.ER32 |
| 060.607.30.0322 | SK 30 | ER 32 | 100 | 50 | da 1 a 20 | 245.40.ER32 |
| 060.607.30.0324 | SK 30 | ER 32 | 150 | 50 | da 1 a 20 | 245.40.ER32 |
| 060.607.30.0400 | SK 30 | ER 40 | 70 | 63 | da 2 a 30 | 245.50.ER40 |
| 061.607.35.0160 | SK 35 | ER 16 | 60 | 28 | da 0,5 a 10 | 245.22.ER16 |
| 061.607.35.0200 | SK 35 | ER 20 | 60 | 34 | da 0,5 a 13 | 245.25. ER20 |
| 061.607.35.0250 | SK 35 | ER 25 | 60 | 42 | da 1 a 16 | 245.32.ER25 |
| 061.607.35.0320 | SK 35 | ER 32 | 60 | 50 | da 1 a 20 | 245.40.ER32 |
| 063.607.40.0160 | SK 40 | ER 16 | 70 | 28 | da 0,5 a 10 | 245.22.ER16 |
| 063.607.40.0162 | SK 40 | ER 16 | 120 | 28 | da 0,5 a 10 | 245.22.ER16 |
| 063.607.40.0200 | SK 40 | ER 20 | 70 | 34 | da 0,5 a 13 | 245.25. ER20 |
| 063.607.40.0202 | SK 40 | ER 20 | 120 | 34 | da 0,5 a 13 | 245.25. ER20 |
| 063.607.40.0250 | SK 40 | ER 25 | 70 | 42 | da 1 a 16 | 245.32.ER25 |
| 063.607.40.0252 | SK 40 | ER 25 | 120 | 42 | da 1 a 16 | 245.32.ER25 |
| 063.607.40.0254 | SK 40 | ER 25 | 150 | 42 | da 1 a 16 | 245.32.ER25 |
| 063.607.40.0320 | SK 40 | ER 32 | 70 | 50 | da 1 a 20 | 245.40.ER32 |
| 063.607.40.0321 | SK 40 | ER 32 | 100 | 50 | da 1 a 20 | 245.40.ER32 |
| 063.607.40.0322 | SK 40 | ER 32 | 120 | 50 | da 1 a 20 | 245.40.ER32 |
| 063.607.40.0324 | SK 40 | ER 32 | 150 | 50 | da 1 a 20 | 245.40.ER32 |
| 063.607.40.0400 | SK 40 | ER 40 | 70 | 63 | da 2 a 30 | 245.50.ER40 |
| 063.607.40.0402 | SK 40 | ER 40 | 120 | 63 | da 2 a 30 | 245.50.ER40 |
| 065.607.50.0160 | SK 50 | ER 16 | 75 | 28 | da 0,5 a 10 | 245.22.ER16 |
| 065.607.50.0200 | SK 50 | ER 20 | 90 | 34 | da 0,5 a 13 | 245.25. ER20 |
| 065.607.50.0250 | SK 50 | ER 25 | 90 | 42 | da 1 a 16 | 245.32.ER25 |
| 065.607.50.0252 | SK 50 | ER 25 | 120 | 42 | da 1 a 16 | 245.32.ER25 |
| 065.607.50.0320 | SK 50 | ER 32 | 90 | 50 | da 1 a 20 | 245.40.ER32 |
| 065.607.50.0322 | SK 50 | ER 32 | 120 | 50 | da 1 a 20 | 245.40.ER32 |
| 065.607.50.0324 | SK 50 | ER 32 | 150 | 50 | da 1 a 20 | 245.40.ER32 |
| 065.607.50.0400 | SK 50 | ER 40 | 90 | 63 | da 2 a 30 | 245.50.ER40 |
| 065.607.50.0402 | SK 50 | ER 40 | 120 | 63 | da 2 a 30 | 245.50.ER40 |

ACCESSORI PER MACCHINE UTENSILI



Mandrini portapinze ER DIN 6499 - ghiera standard

Collet chucks ER DIN 6499 - standard nut

Spannzangenhalter ER DIN 6499 - standard Spannmutter

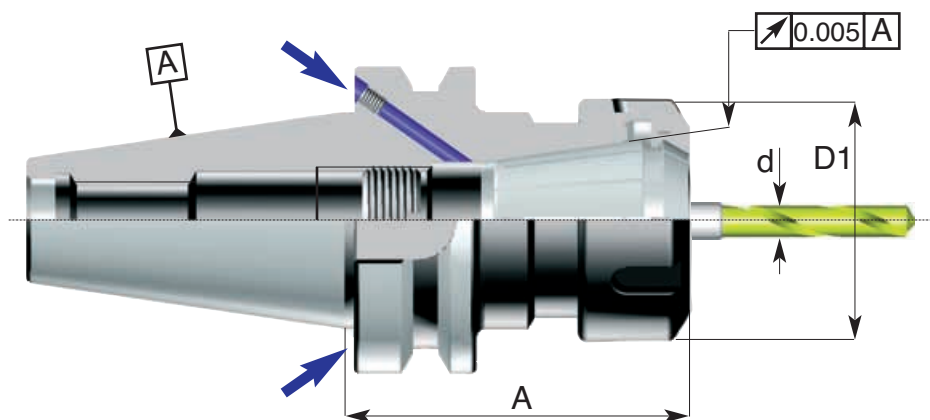
Mandrins porte-pinces ER DIN 6499 - écrou standard

Prebilanciato
Prebalanced
G6.3 / 8000rpm



MAS 403 BT/B

ART: H607 BT/B
ghiera standard / standard nut



3.
31



| Codice di ord Code | SK | ER | A | D1 | Cap. di chiusura Pinza "d" Capacity range "d" | Ghiera Nut |
|-----------------------|-------|-------|-----|----|--|---------------|
| H63.607.40.0164 | SK 40 | ER 16 | 150 | 28 | da 0,5 a 10 | 245.22.ER16 |
| H63.607.40.0166 | SK 40 | ER 16 | 200 | 28 | da 0,5 a 10 | 245.22.ER16 |
| H63.607.40.0204 | SK 40 | ER 20 | 150 | 34 | da 0,5 a 13 | 245.25.ER20 |
| H63.607.40.0250 | SK 40 | ER 25 | 60 | 42 | da 1 a 16 | 245.32.ER25 |
| H63.607.40.0252 | SK 40 | ER 25 | 120 | 42 | da 1 a 16 | 245.32.ER25 |
| H63.607.40.0254 | SK 40 | ER 25 | 150 | 42 | da 1 a 16 | 245.32.ER25 |
| H63.607.40.0256 | SK 40 | ER 25 | 200 | 42 | da 1 a 16 | 245.32.ER25 |
| H63.607.40.0320 | SK 40 | ER 32 | 70 | 50 | da 1 a 20 | 245.40.ER32 |
| H63.607.40.0322 | SK 40 | ER 32 | 120 | 50 | da 1 a 20 | 245.40.ER32 |
| H63.607.40.0324 | SK 40 | ER 32 | 150 | 50 | da 1 a 20 | 245.40.ER32 |
| H63.607.40.0326 | SK 40 | ER 32 | 200 | 50 | da 1 a 20 | 245.40.ER32 |
| H63.607.40.0400 | SK 40 | ER 40 | 70 | 63 | da 2 a 30 | 245.50.ER40 |
| H63.607.40.0402 | SK 40 | ER 40 | 120 | 63 | da 2 a 30 | 245.50.ER40 |
| H65.607.50.0250 | SK 50 | ER 25 | 90 | 42 | da 1 a 16 | 245.32.ER25 |
| H65.607.50.0252 | SK 50 | ER 25 | 120 | 42 | da 1 a 16 | 245.32.ER25 |
| H65.607.50.0320 | SK 50 | ER 32 | 90 | 50 | da 1 a 20 | 245.40.ER32 |
| H65.607.50.0322 | SK 50 | ER 32 | 120 | 50 | da 1 a 20 | 245.40.ER32 |
| H65.607.50.0324 | SK 50 | ER 32 | 150 | 50 | da 1 a 20 | 245.40.ER32 |
| H65.607.50.0400 | SK 50 | ER 40 | 90 | 63 | da 2 a 30 | 245.50.ER40 |
| H65.607.50.0402 | SK 50 | ER 40 | 120 | 63 | da 2 a 30 | 245.50.ER40 |

3. MANDRINI a cono ISO MAS 403 BT TOOL HOLDERS with ISO cone MAS 403 BT



Mandri portapinz ER DIN 6499 - ghiera mini
Collet chucks ER DIN 6499- mini nut
Spannzangenhalter ER DIN 6499 - mini Spannmutter
Mandrins porte-pinces ER DIN 6499 - écrou mini

ACCESSORI PER MACCHINE UTENSILI

MAS 403 BT/B

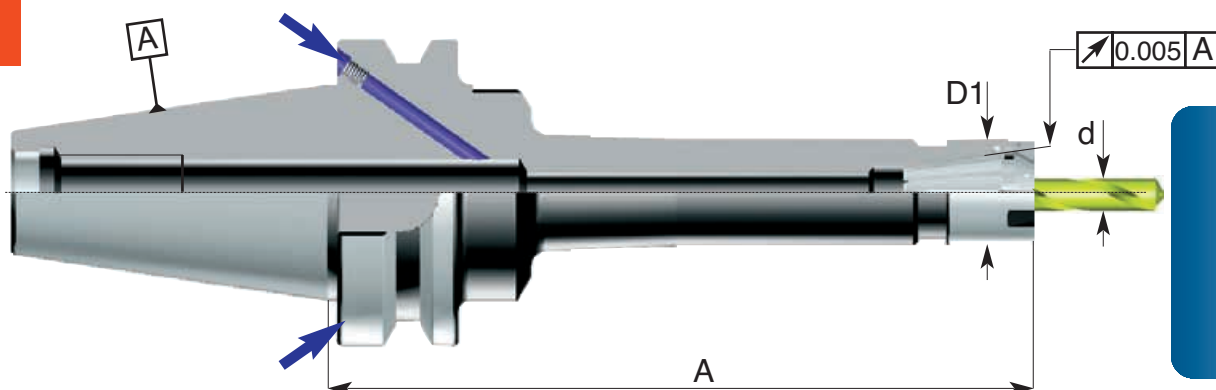


Prebilanciato
Prebalanced
G6.3 / 8000rpm



ART: H607 BT/B
ghiera mini / mini nut

3.
32



Pinze / Collets
pag: 12.6

Ghiere / Nuts
pag: 12.13

| Codice di ord Code | SK | ER | A | D1 | Cap. di chiusura Pinza "d" Capacity range "d" | Ghiera Nut |
|-----------------------|-------|-------|-----|----|--|---------------|
| H63.607.40.0112M | SK 40 | ER 11 | 100 | 16 | da 0,5 a 7 | 245.13.ER11M |
| H63.607.40.0114M | SK 40 | ER 11 | 150 | 16 | da 0,5 a 7 | 245.13.ER11M |
| H63.607.40.0162M | SK 40 | ER 16 | 100 | 22 | da 0,5 a 10 | 245.19.ER16M |
| H63.607.40.0164M | SK 40 | ER 16 | 150 | 22 | da 0,5 a 10 | 245.19.ER16M |
| H63.607.40.0252M | SK 40 | ER 25 | 100 | 35 | da 1 a 16 | 245.24.ER25M |
| H63.607.40.0254M | SK 40 | ER 25 | 150 | 35 | da 1 a 16 | 245.24.ER25M |
| H65.607.50.0164M | SK 50 | ER 16 | 150 | 22 | da 0,5 a 10 | 245.19.ER16M |
| H65.607.50.0254M | SK 50 | ER 25 | 150 | 35 | da 1 a 16 | 245.24.ER25M |

Cassette con portapinze ER pinze complete di chiave di serraggio

Boxes with ER collet chucks and collets - supplied with wrench

Kassetten mit Spannzangenhalter ER und Spannzangen - geliefert mit Schlüssel

Coffrets avec mandrins à pinces ER et pinces - fournis avec clé



MAS 403 BT

CASSETTE BT

ART: 060... / 063... / 065...

3.
33



| Codice di ord. Code | Mandrino Chuck | SK | Tipo pinza Collets type | Numero pinze Collets nr. | Ø Pinza Ø Collets |
|------------------------|-------------------|------|----------------------------|-----------------------------|-------------------------|
| 060.30.09.ER32 | 060.607.30.0320 | BT30 | ER32 | 9 | 4-6-8-10-12-14-16-18-20 |
| 060.30.18.ER32 | 060.607.30.0320 | BT30 | ER32 | 18 | da 3 a 20 |
| 063.40.09.ER32 | 063.607.40.0320 | BT40 | ER32 | 9 | 4-6-8-10-12-14-16-18-20 |
| 063.40.18.ER32 | 063.607.40.0320 | BT40 | ER32 | 18 | da 3 a 20 |
| 063.40.09.ER40 | 063.607.40.0400 | BT40 | ER40 | 9 | 4-6-8-10-12-14-16-18-20 |
| 063.40.23.ER40 | 063.607.40.0400 | BT40 | ER40 | 23 | da 4 a 26 |
| 065.50.09.ER32 | 065.607.50.0320 | BT50 | ER32 | 9 | 4-6-8-10-12-14-16-18-20 |
| 065.50.18.ER32 | 065.607.50.0320 | BT50 | ER32 | 18 | da 3 a 20 |
| 065.50.09.ER40 | 065.607.50.0400 | BT50 | ER40 | 9 | 4-6-8-10-12-14-16-18-20 |
| 065.50.23.ER40 | 065.607.50.0400 | BT50 | ER40 | 23 | da 4 a 26 |

3. MANDRINI a cono ISO MAS 403 BT

TOOL HOLDERS with ISO cone MAS 403 BT



Mandrini per astucci registrabili e portautensili con gambo a norma DIN 6327

Adaptors for adjustable inserts DIN 6327

Zwischenhülsen für axialverstellbare Futter DIN 6327

Douilles pour mandrins réglables axialement DIN 6327

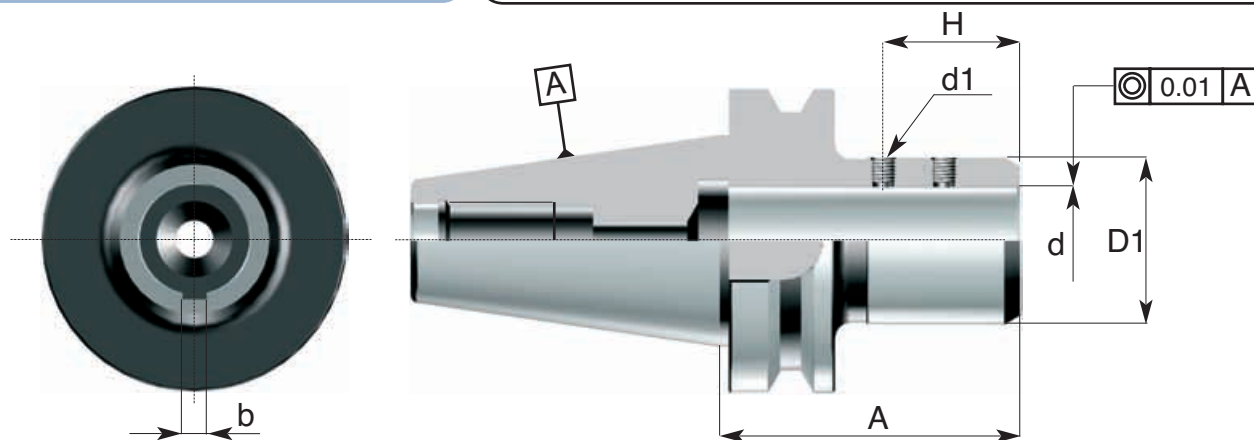
ACCESSORI PER MACCHINE UTENSILI

MAS 403 BT



ART:610 BT

3.
34



| Codice di ord Code | SK | d h7 | A | D1 | H | b C11 | Grano di serraggio "d1" Clamping screw "d1" |
|-----------------------|-------|---------|-----|----|----|----------|--|
| 063.610.40.0250 | SK 40 | 25 | 90 | 45 | 38 | 6 | 610.00.0080 |
| 063.610.40.0280 | SK 40 | 28 | 85 | 45 | 38 | 8 | 610.00.0080 |
| 063.610.40.0360 | SK 40 | 36 | 115 | 55 | 45 | 8 | 610.00.0080 |
| 065.610.50.0280 | SK 50 | 28 | 100 | 55 | 38 | 6 | 610.00.0060 |
| 065.610.50.0360 | SK 50 | 36 | 100 | 60 | 45 | 8 | 610.00.0080 |
| 065.610.50.0480 | SK 50 | 48 | 120 | 75 | 57 | 10 | 610.00.0100 |



ACCESSORI PER MACCHINE UTENSILI



Maschiatori a cambio rapido con compensazione elastica assiale a trazione e pressione

Quick-change tapping chuck with compensation in compression and tension

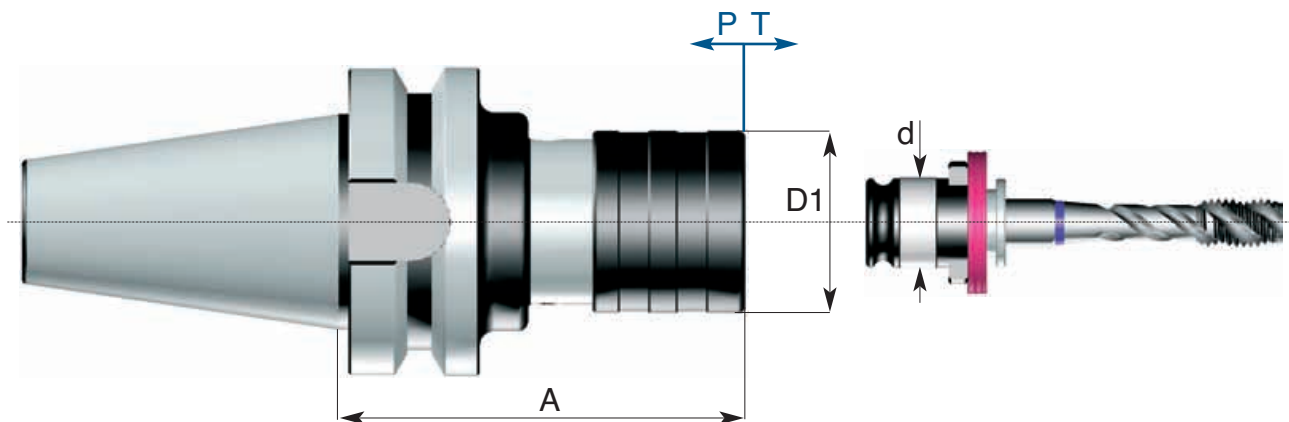
Gewindeschneid- und Schnellwechselfutter mit Ausgleich auf Druck und Zug

Mandrin à tarauder à changement rapide avec compensation longitudinale et de la traction



MAS 403 BT

ART: 638 BT



3.
35

| Codice di ord Code | SK | A | D1 | d | Capacità maschiatore Tapping capacity | Compensazione assiale T Axial compensation P | |
|-----------------------|-------|-----|----|----|--|---|----|
| 060.638.30.1205 | SK 30 | 70 | 35 | 19 | M3 - M14 | 5 | 7 |
| 060.638.30.2008 | SK 30 | 95 | 53 | 31 | M8 - M24 | 12 | 13 |
| 063.638.40.1205 | SK 40 | 80 | 35 | 19 | M3 - M14 | 5 | 7 |
| 063.638.40.2008 | SK 40 | 101 | 53 | 31 | M8 - M24 | 12 | 13 |
| 063.638.40.3310 | SK 40 | 148 | 78 | 48 | M14 - M36 | 15 | 20 |
| 065.638.50.1205 | SK 50 | 90 | 35 | 19 | M3 - M14 | 5 | 7 |
| 065.638.50.2008 | SK 50 | 115 | 53 | 31 | M8 - M24 | 12 | 13 |
| 065.638.50.3310 | SK 50 | 145 | 78 | 48 | M14 - M36 | 15 | 20 |



3. MANDRINI a cono ISO MAS 403 BT TOOL HOLDERS with ISO cone MAS 403 BT



Maschiatori a cambio rapido senza compensazione per maschiatura rigida
Quick-change tapping chuck without compensation for rigid tapping
Gewindeschneid- und Schnellwechselfutter ohne Ausgleich für Synchronisation
Mandrin à tarauder à changement rapid sans compensation pour taraudage synchronisé

ACCESSORI PER MACCHINE UTENSILI

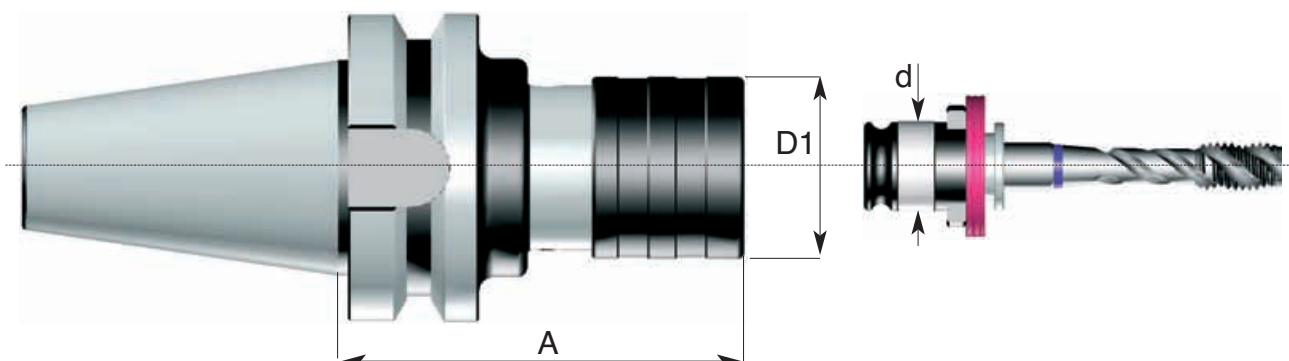


MAS 403 BT



ART:648 BT

3.
36



| Codice di ord Code | SK | A | D1 | d | Capacità maschiatore Tapping capacity |
|-----------------------|-------|-----|----|----|--|
| 060.648.30.1200 | SK 30 | 70 | 32 | 19 | M 3 - M 14 |
| 060.648.30.2000 | SK 30 | 98 | 50 | 31 | M 8 - M 24 |
| 063.648.40.1200 | SK 40 | 85 | 32 | 19 | M 3 - M 14 |
| 063.648.40.2000 | SK 40 | 85 | 50 | 31 | M 8 - M 24 |
| 063.648.40.3300 | SK 40 | 110 | 72 | 48 | M 14 - M 36 |
| 065.648.50.1200 | SK 50 | 80 | 32 | 19 | M 3 - M 14 |
| 065.648.50.2000 | SK 50 | 90 | 50 | 31 | M 8 - M 24 |
| 065.648.50.3300 | SK 50 | 115 | 72 | 48 | M 14 - M 36 |



ACCESSORI PER MACCHINE UTENSILI



Attacchi base per sistema modulare tipo "VARILOCK"

Attachments for modular system - type "VARILOCK"

Grundaufnahmen für Modulare Werkzeugsystem - Type "VARILOCK"

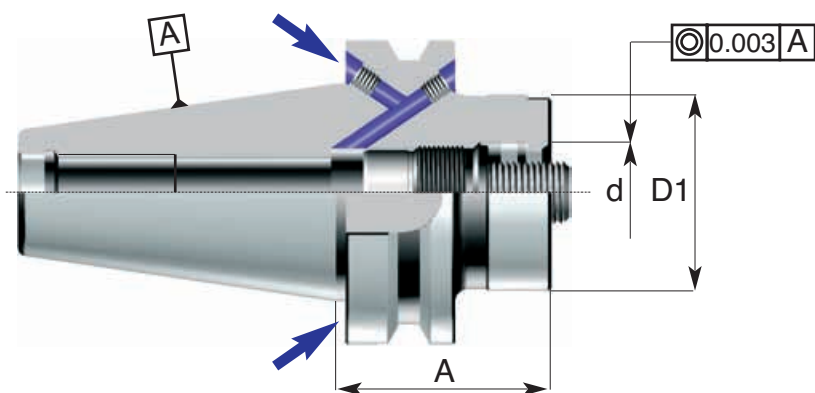
Attachements pour système modulaire - type "VARILOCK"



MAS 403 BT/B

ART:HVAR BT/B

3.
37



| Codice di ord Code | SK | A | D1 | d | Vite Screw | Ghiera Nut |
|-----------------------|-------|----|----|----|----------------|----------------|
| H63.VAR.40.0500 | SK 40 | 50 | 50 | 27 | VAR.00.0500.20 | VAR.00.0500.10 |
| H63.VAR.40.0630 | SK 40 | 50 | 63 | 32 | VAR.00.0630.20 | VAR.00.0630.10 |
| H65.VAR.50.0502 | SK 50 | 50 | 50 | 27 | VAR.00.0500.20 | VAR.00.0500.10 |
| H65.VAR.50.0632 | SK 50 | 50 | 63 | 32 | VAR.00.0800.20 | VAR.00.0800.10 |
| H65.VAR.50.0802 | SK 50 | 50 | 80 | 32 | VAR.00.0800.20 | VAR.00.0800.10 |



4.2

- Portafrese combinati
Combined milling cutter chucks

4.2

- Portapinze ER DIN 6499
Collet chucks ER DIN 6499

4.3

- Portafrese weldon
Milling cutter chucks Weldon

4.3

- Maschiatori
Tapping chuck



for CHIRON
Attacchi con
cono ISO 30
Attachments
with ISO cone

4

 **delta**

4. MANDRINI CHIRON ISO 30

TOOL HOLDERS CHIRON ISO 30



Portafrese combinati con trascinamento frontale e chiavetta DIN 6358

Combined milling cutter chucks DIN 6358 B
 Kombi-Aufsteckfräserdorne DIN 6358 B
 Mandrins porte-fraises combinés DIN 6358 B

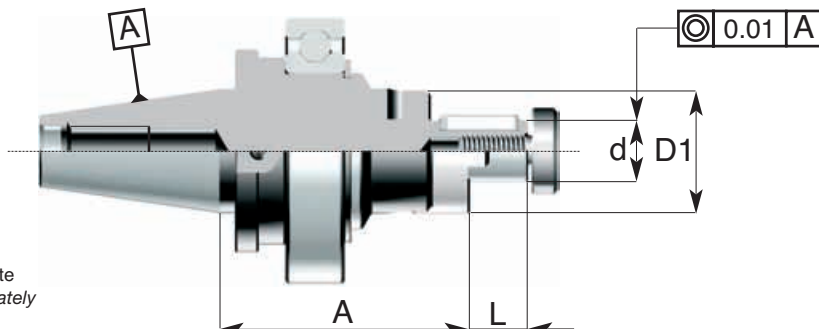
ACCESSORI PER MACCHINE UTENSILI



CHIRON ISO 30

ART: CHI.130

4,
2



Cuscinetto da ordinare a parte
 Bearing to be ordered separately

| Codice di ord Code | SK | d h6 | A | L | L1 | D1 | Trascinatore Ring | Vite Screw | Linguetta Key |
|-----------------------|-------|---------|----|----|----|----|----------------------|---------------|------------------|
| CHI.130.30.0160 | SK 30 | 16 | 62 | 17 | 27 | 32 | 190.01 | 191.01 | 130.199.01 |
| CHI.130.30.0220 | SK 30 | 22 | 62 | 19 | 31 | 40 | 190.02 | 191.02 | 130.199.02 |
| CHI.130.30.0270 | SK 30 | 27 | 62 | 21 | 33 | 50 | 190.03 | 191.03 | 130.199.03 |
| CHI.130.30.0320 | SK 30 | 32 | 62 | 24 | 38 | 58 | 190.04 | 191.04 | 130.199.04 |

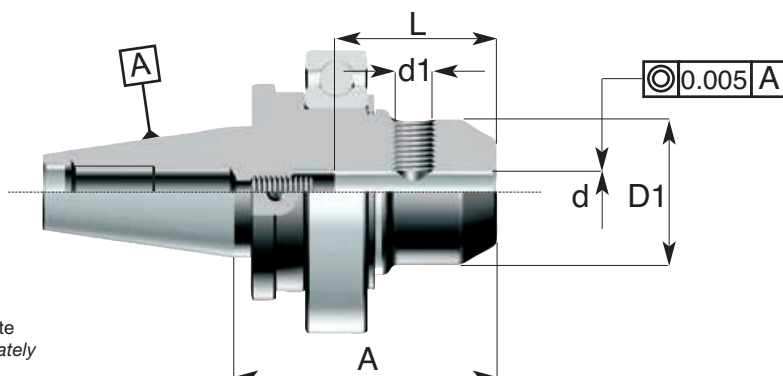
Portafrese cilindriche tipo weldon con vite di registrazione interna DIN 6359 B

Milling cutter chucks for straight-shank tools - Weldon System DIN 6359 B
 Spannfutter Weldon für Zylinderschäfte DIN 6359 B
 Mandrins porte-Weldon pour fraises à queue cylindrique DIN 6359 B



CHIRON ISO 30

ART: CHI.208



Cuscinetto da ordinare a parte
 Bearing to be ordered separately

| Codice di ord Code | SK | d H5 | A | D1 | L | d1 | Grano di serraggio Clamping screw |
|-----------------------|-------|---------|----|----|----|------------|--------------------------------------|
| CHI.208.30.0060 | SK 30 | 6 | 63 | 25 | 35 | M6X10 | 208.00.0060 |
| CHI.208.30.0080 | SK 30 | 8 | 63 | 28 | 35 | M8X10 | 208.00.0080 |
| CHI.208.30.0100 | SK 30 | 10 | 63 | 35 | 39 | M10X12 | 208.00.0100 |
| CHI.208.30.0120 | SK 30 | 12 | 65 | 40 | 44 | M12X1,5X16 | 208.00.0120 |
| CHI.208.30.0160 | SK 30 | 16 | 65 | 48 | 47 | M14X1,5X16 | 208.00.0140 |
| CHI.208.30.0200 | SK 30 | 20 | 70 | 50 | 49 | M16X1,5X16 | 208.00.0160 |

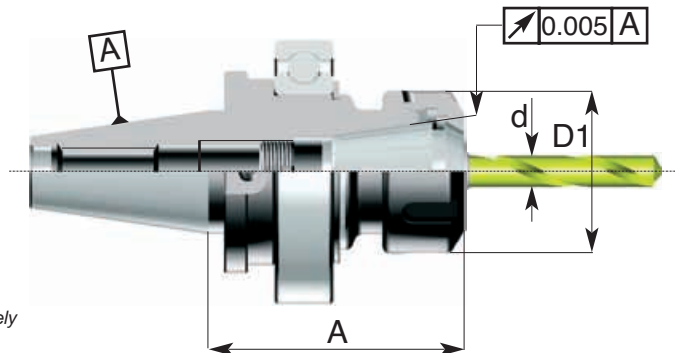
ACCESSORI PER MACCHINE UTENSILI

Mandrini portapinze ER DIN 6499
 Collet chucks ER DIN 6499
 Spannzangenhalter ER DIN 6499
 Mandrins porte-pinces ER DIN 6499

CHIRON ISO 30



ART: CHI.607



Cuscinetto da ordinare a parte
 Bearing to be ordered separately



4.
3

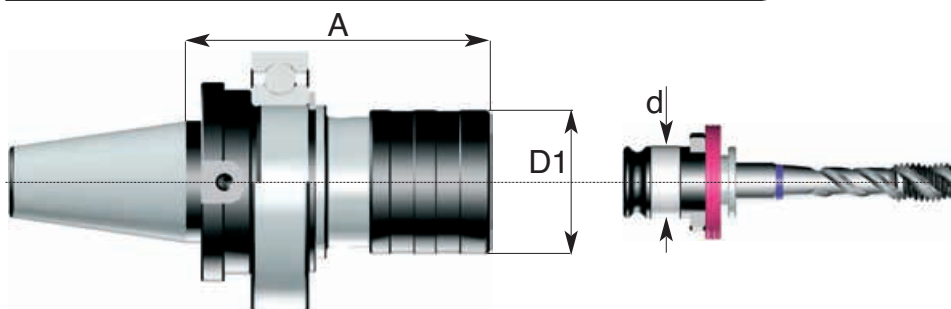
| Codice di ord Code | SK | ER | A | D1 | Cap. di chiusura Pinza "d" Capacity range "d" | Ghiera Nut |
|-----------------------|-------|-------|-----|----|--|---------------|
| CHI.607.30.0160 | SK 30 | ER 16 | 65 | 28 | da 1 a 10 | 245.22.ER16 |
| CHI.607.30.0250 | SK 30 | ER 25 | 65 | 42 | da 2 a 16 | 245.32.ER25 |
| CHI.607.30.0320 | SK 30 | ER 32 | 70 | 50 | da 2 a 20 | 245.40.ER32 |
| CHI.607.30.0322 | SK 30 | ER 32 | 120 | 50 | da 2 a 20 | 245.40.ER32 |
| CHI.607.30.0324 | SK 30 | ER 32 | 150 | 50 | da 2 a 20 | 245.40.ER32 |
| CHI.607.30.0326 | SK 30 | ER 32 | 180 | 50 | da 2 a 20 | 245.40.ER32 |
| CHI.607.30.0400 | SK 30 | ER 40 | 80 | 63 | da 4 a 26 | 245.50.ER40 |



Maschiatori a cambio rapido con compensazione elastica assiale a trazione e pressione
 Quick-change tapping chuck with compensation in compression and tension
 Gewindeschneid- und Schnellwechselfutter mit Ausgleich auf Druck und Zug
 Mandrin à tarauder à changement rapid avec compensation longitudinale et de la traction

CHIRON ISO 30

ART: CHI.638



Cuscinetto da ordinare a parte
 Bearing to be ordered separately



| Codice di ord Code | SK | A | D1 | d | Capacità maschiatore Tapping capacity | Compensazione assiale T Axial compensation P |
|-----------------------|-------|----|----|----|--|---|
| CHI.638.30.1205 | SK 30 | 60 | 35 | 19 | M3 - M14 | 5 7 |

4. MANDRINI CHIRON ISO 30

TOOL HOLDERS CHIRON ISO 30



Cuscinetto a sfere per macchine tipo CHIRON fz 16, fz 20, fz 25

Bearing - for chiron fz 16, fz 20, fz 25

Lager - für chiron fz 16, fz 20, fz 25

Roulement - pour chiron fz 16, fz 20, fz 25

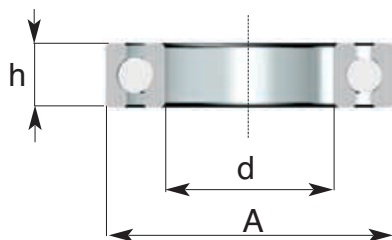
ACCESSORI PER MACCHINE UTENSILI

CHIRON ISO 30



ART:CHI.6008.2RS1

4
4



| Codice di ord Code | D | d | h |
|-----------------------|----|----|----|
| CHI.6008.2RS1 | 68 | 40 | 15 |



www.delta-spa.com



PORTAUTENSILI A CONO ISO DIN 2088 E MORSE PER MACCHINE UTENSILI TRADIZIONALI
 CONTROPUNTE ROTANTI E FISSE - MANDRINI MASCHIATORI A CAMBIO RAPIDO
 TOOLHOLDERS FOR MILLING AND BORING MACHINES WITH ISO AND MORSE
 PRECISION RUNNING TOOL CENTERS - QUICK CHANGE TAPPING CHUCKS

PORTAUTENSILI A CONO ISO DIN 69871/A-B, CAT E MAS BT 405 PER CENTRI DI LATO
 A CONTROLLO NUMERICO
 TOOLHOLDERS FOR CNC MACHINERY WITH ISO DIN 69871/A-B, CAT AND MAS BT 405

PORTAUTENSILI CON ATTACCO HSK DIN 69893 FORMA A -
 TOOLHOLDERS WITH HSK TAPER DIN 69893 FORM A

MANDRINO HYDRO DELTA A CHIUSURA IDRAULICA
 HYDRO DELTA CHUCKS HYDRAULIC CLAMP

PORTAUTENSILI PER TORNI A CONTROLLO NUMERICO DIN 69880 UDI 3
 TOOLHOLDERS FOR NC LATHES DIN 69880 UDI 3

MANDRINI MACCHINA PRINCIPALI - PORTAUTENSILI SPECIALI A DISEGNO CLIENTI
 MACHINE MAIN SPINDLES - SPECIAL TOOLHOLDERS ON CUSTOMER'S REQUEST