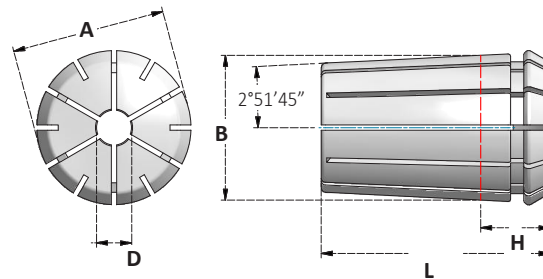


**PINZE DI SERRAGGIO EOC**  
*EOC CLAMPING COLLETS*


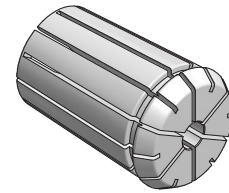
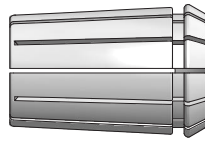
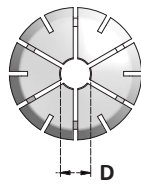
Tipo	EU	D	CAPACITÀ DI SERRAGGIO COLLAPSE	L	B	A	H
<b>EOC16</b>	415E	2÷16	0,5mm	40	22,65	25,5	15
<b>EOC20</b>	4541E	4÷20	0,5mm	45	27,4	29,8	16
<b>EOC25</b>	462E	2÷25	0,5mm	52	32,9	35,05	16
<b>EOC32</b>	467E	4÷32	0,5mm	60	41,3	43,7	17
<b>EOC40</b>	468E	16÷40	0,5mm	68	49,7	52,2	18

**ERRORE MEDIO DI CONCENTRICITA'**  
 AVERAGE OF RUNOUT ACCURACY

↗ **0,008**

- Il basso valore di conicità e la lunga presa dell'utensile conferiscono alle pinze EOC una forza di serraggio superiore, rendendole particolarmente adatte per le operazioni di fresatura gravose e dove sia richiesta la massima rigidità.
- Sono tagliate in 6+6 settori bilaterali per una capacità di serraggio fino a 0,5mm al di sotto del diametro nominale.
- Superficie finita con rugosità Rz 1,6.

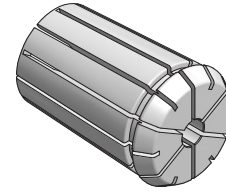
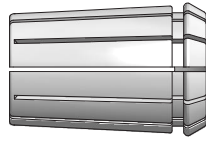
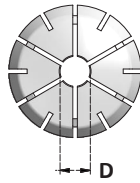
- *Higher clamping force due to collet taper and longer supported length of tool shank assure strong grip and big rigidity in heavy duty milling operations.*
- *Double side slots 6+6 allow a wide clamping range up to 0,5mm reduced from nominal size.*
- *Surface finished Rz 1,6.*

**PINZE DI SERRAGGIO EOC**
*EOC CLAMPING COLLETS*


Articolo	Capacità Range
<b>EOC16.D2</b>	2 ÷ 1,5
<b>EOC16.D2,5</b>	2,5 ÷ 2
<b>EOC16.D3</b>	3 ÷ 2,5
<b>EOC16.D3,5</b>	3,5 ÷ 3
<b>EOC16.D4</b>	4 ÷ 3,5
<b>EOC16.D4,5</b>	4,5 ÷ 4
<b>EOC16.D5</b>	5 ÷ 4,5
<b>EOC16.D5,5</b>	5,5 ÷ 5
<b>EOC16.D6</b>	6 ÷ 5,5
<b>EOC16.D6,5</b>	6,5 ÷ 6
<b>EOC16.D7</b>	7 ÷ 6,5
<b>EOC16.D7,5</b>	7,5 ÷ 7
<b>EOC16.D8</b>	8 ÷ 7,5
<b>EOC16.D8,5</b>	8,5 ÷ 8
<b>EOC16.D9</b>	9 ÷ 8,5
<b>EOC16.D9,5</b>	9,5 ÷ 9
<b>EOC16.D10</b>	10 ÷ 9,5
<b>EOC16.D10,5</b>	10,5 ÷ 10
<b>EOC16.D11</b>	11 ÷ 10,5
<b>EOC16.D11,5</b>	11,5 ÷ 11
<b>EOC16.D12</b>	12 ÷ 11,5
<b>EOC16.D12,5</b>	12,5 ÷ 12
<b>EOC16.D13</b>	13 ÷ 12,5
<b>EOC16.D13,5</b>	13,5 ÷ 13
<b>EOC16.D14</b>	14 ÷ 13,5
<b>EOC16.D14,5</b>	14,5 ÷ 14
<b>EOC16.D15</b>	15 ÷ 14,5
<b>EOC16.D15,5</b>	15,5 ÷ 15
<b>EOC16.D16</b>	16 ÷ 15,5

Articolo	Capacità Range
<b>EOC20.D2</b>	2 ÷ 1,5
<b>EOC20.D2,5</b>	2,5 ÷ 2
<b>EOC20.D3</b>	3 ÷ 2,5
<b>EOC20.D3,5</b>	3,5 ÷ 3
<b>EOC20.D4</b>	4 ÷ 3,5
<b>EOC20.D4,5</b>	4,5 ÷ 4
<b>EOC20.D5</b>	5 ÷ 4,5
<b>EOC20.D5,5</b>	5,5 ÷ 5
<b>EOC20.D6</b>	6 ÷ 5,5
<b>EOC20.D6,5</b>	6,5 ÷ 6
<b>EOC20.D7</b>	7 ÷ 6,5
<b>EOC20.D7,5</b>	7,5 ÷ 7
<b>EOC20.D8</b>	8 ÷ 7,5
<b>EOC20.D8,5</b>	8,5 ÷ 8
<b>EOC20.D9</b>	9 ÷ 8,5
<b>EOC20.D9,5</b>	9,5 ÷ 9
<b>EOC20.D10</b>	10 ÷ 9,5
<b>EOC20.D10,5</b>	10,5 ÷ 10
<b>EOC20.D11</b>	11 ÷ 10,5
<b>EOC20.D11,5</b>	11,5 ÷ 11
<b>EOC20.D12</b>	12 ÷ 11,5
<b>EOC20.D12,5</b>	12,5 ÷ 12
<b>EOC20.D13</b>	13 ÷ 12,5
<b>EOC20.D13,5</b>	13,5 ÷ 13
<b>EOC20.D14</b>	14 ÷ 13,5
<b>EOC20.D14,5</b>	14,5 ÷ 14
<b>EOC20.D15</b>	15 ÷ 14,5
<b>EOC20.D15,5</b>	15,5 ÷ 15
<b>EOC20.D16</b>	16 ÷ 15,5
<b>EOC20.D16,5</b>	16,5 ÷ 16
<b>EOC20.D17</b>	17 ÷ 16,5
<b>EOC20.D17,5</b>	17,5 ÷ 17
<b>EOC20.D18</b>	18 ÷ 17,5
<b>EOC20.D18,5</b>	18,5 ÷ 18
<b>EOC20.D19</b>	19 ÷ 18,5
<b>EOC20.D19,5</b>	19,5 ÷ 19
<b>EOC20.D20</b>	20 ÷ 19,5

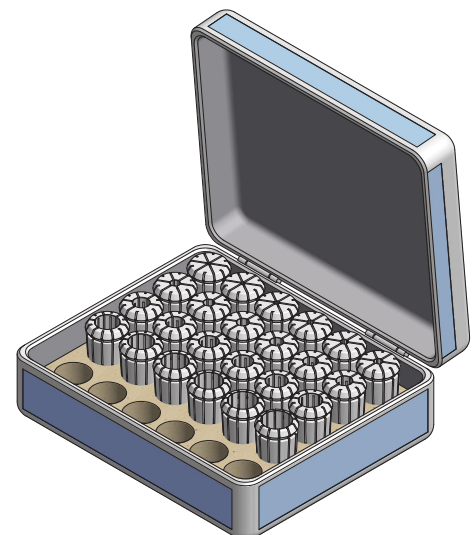
Articolo	Capacità Range
<b>EOC25.D2</b>	2 ÷ 1,5
<b>EOC25.D2,5</b>	2,5 ÷ 2
<b>EOC25.D3</b>	3 ÷ 2,5
<b>EOC25.D3,5</b>	3,5 ÷ 3
<b>EOC25.D4</b>	4 ÷ 3,5
<b>EOC25.D4,5</b>	4,5 ÷ 4
<b>EOC25.D5</b>	5 ÷ 4,5
<b>EOC25.D5,5</b>	5,5 ÷ 5
<b>EOC25.D6</b>	6 ÷ 5,5
<b>EOC25.D6,5</b>	6,5 ÷ 6
<b>EOC25.D7</b>	7 ÷ 6,5
<b>EOC25.D7,5</b>	7,5 ÷ 7
<b>EOC25.D8</b>	8 ÷ 7,5
<b>EOC25.D8,5</b>	8,5 ÷ 8
<b>EOC25.D9</b>	9 ÷ 8,5
<b>EOC25.D9,5</b>	9,5 ÷ 9
<b>EOC25.D10</b>	10 ÷ 9,5
<b>EOC25.D10,5</b>	10,5 ÷ 10
<b>EOC25.D11</b>	11 ÷ 10,5
<b>EOC25.D11,5</b>	11,5 ÷ 11
<b>EOC25.D12</b>	12 ÷ 11,5
<b>EOC25.D12,5</b>	12,5 ÷ 12
<b>EOC25.D13</b>	13 ÷ 12,5
<b>EOC25.D13,5</b>	13,5 ÷ 13
<b>EOC25.D14</b>	14 ÷ 13,5
<b>EOC25.D14,5</b>	14,5 ÷ 14
<b>EOC25.D15</b>	15 ÷ 14,5
<b>EOC25.D15,5</b>	15,5 ÷ 15
<b>EOC25.D16</b>	16 ÷ 15,5
<b>EOC25.D16,5</b>	16,5 ÷ 16
<b>EOC25.D17</b>	17 ÷ 16,5
<b>EOC25.D17,5</b>	17,5 ÷ 17
<b>EOC25.D18</b>	18 ÷ 17,5
<b>EOC25.D18,5</b>	18,5 ÷ 18
<b>EOC25.D19</b>	19 ÷ 18,5
<b>EOC25.D19,5</b>	19,5 ÷ 19
<b>EOC25.D20</b>	20 ÷ 19,5
<b>EOC25.D20,5</b>	20,5 ÷ 20
<b>EOC25.D21</b>	21 ÷ 20,5
<b>EOC25.D21,5</b>	21,5 ÷ 21
<b>EOC25.D22</b>	22 ÷ 21,5
<b>EOC25.D22,5</b>	22,5 ÷ 22
<b>EOC25.D23</b>	23 ÷ 22,5
<b>EOC25.D23,5</b>	23,5 ÷ 23
<b>EOC25.D24</b>	24 ÷ 23,5
<b>EOC25.D24,5</b>	24,5 ÷ 24
<b>EOC25.D25</b>	25 ÷ 24,5

**PINZE DI SERRAGGIO EOC**
*EOC CLAMPING COLLETS*


Articolo	Capacità Range	Articolo	Capacità Range	Articolo	Capacità Range	Articolo	Capacità Range
EOC32.D3	3 ÷ 2,5	EOC32.D20	20 ÷ 19,5	EOC40.D10	10 ÷ 9,5	EOC40.D30	30 ÷ 29,5
EOC32.D3,5	3,5 ÷ 3	EOC32.D20,5	20,5 ÷ 20	EOC40.D11	11 ÷ 10,5	EOC40.D31	31 ÷ 30,5
EOC32.D4	4 ÷ 3,5	EOC32.D21	21 ÷ 20,5	EOC40.D12	12 ÷ 11,5	EOC40.D32	32 ÷ 31,5
EOC32.D4,5	4,5 ÷ 4	EOC32.D21,5	21,5 ÷ 21	EOC40.D13	13 ÷ 12,5	EOC40.D33	33 ÷ 32,5
EOC32.D5	5 ÷ 4,5	EOC32.D22	22 ÷ 21,5	EOC40.D14	14 ÷ 13,5	EOC40.D34	34 ÷ 33,5
EOC32.D5,5	5,5 ÷ 5	EOC32.D22,5	22,5 ÷ 22	EOC40.D15	15 ÷ 14,5	EOC40.D35	35 ÷ 34,5
EOC32.D6	6 ÷ 5,5	EOC32.D23	23 ÷ 22,5	EOC40.D16	16 ÷ 15,5	EOC40.D36	36 ÷ 35,5
EOC32.D6,5	6,5 ÷ 6	EOC32.D23,5	23,5 ÷ 23	EOC40.D17	17 ÷ 16,5	EOC40.D37	37 ÷ 36,5
EOC32.D7	7 ÷ 6,5	EOC32.D24	24 ÷ 23,5	EOC40.D18	18 ÷ 17,5	EOC40.D38	38 ÷ 37,5
EOC32.D7,5	7,5 ÷ 7	EOC32.D24,5	24,5 ÷ 24	EOC40.D19	19 ÷ 18,5	EOC40.D39	39 ÷ 38,5
EOC32.D8	8 ÷ 7,5	EOC32.D25	25 ÷ 24,5	EOC40.D20	20 ÷ 19,5	EOC40.D40	40 ÷ 39,5
EOC32.D8,5	8,5 ÷ 8	EOC32.D25,5	25,5 ÷ 25	EOC40.D21	21 ÷ 20,5		
EOC32.D9	9 ÷ 8,5	EOC32.D26	26 ÷ 25,5	EOC40.D22	22 ÷ 21,5		
EOC32.D9,5	9,5 ÷ 9	EOC32.D26,5	26,5 ÷ 26	EOC40.D23	23 ÷ 22,5		
EOC32.D10	10 ÷ 9,5	EOC32.D27	27 ÷ 26,5	EOC40.D24	24 ÷ 23,5		
EOC32.D10,5	10,5 ÷ 10	EOC32.D27,5	27,5 ÷ 27	EOC40.D25	25 ÷ 24,5		
EOC32.D11	11 ÷ 10,5	EOC32.D28	28 ÷ 27,5	EOC40.D26	26 ÷ 25,5		
EOC32.D11,5	11,5 ÷ 11	EOC32.D28,5	28,5 ÷ 28	EOC40.D27	27 ÷ 26,5		
EOC32.D12	12 ÷ 11,5	EOC32.D29	29 ÷ 28,5	EOC40.D28	28 ÷ 27,5		
EOC32.D12,5	12,5 ÷ 12	EOC32.D29,5	29,5 ÷ 29	EOC40.D29	29 ÷ 28,5		
EOC32.D13	13 ÷ 12,5	EOC32.D30	30 ÷ 29,5				
EOC32.D13,5	13,5 ÷ 13	EOC32.D30,5	30,5 ÷ 30				
EOC32.D14	14 ÷ 13,5	EOC32.D31	31 ÷ 30,5				
EOC32.D14,5	14,5 ÷ 14	EOC32.D31,5	31,5 ÷ 31				
EOC32.D15	15 ÷ 14,5	EOC32.D32	32 ÷ 31,5				
EOC32.D15,5	15,5 ÷ 15						
EOC32.D16	16 ÷ 15,5						
EOC32.D16,5	16,5 ÷ 16						
EOC32.D17	17 ÷ 16,5						
EOC32.D17,5	17,5 ÷ 17						
EOC32.D18	18 ÷ 17,5						
EOC32.D18,5	18,5 ÷ 18						
EOC32.D19	19 ÷ 18,5						
EOC32.D19,5	19,5 ÷ 19						

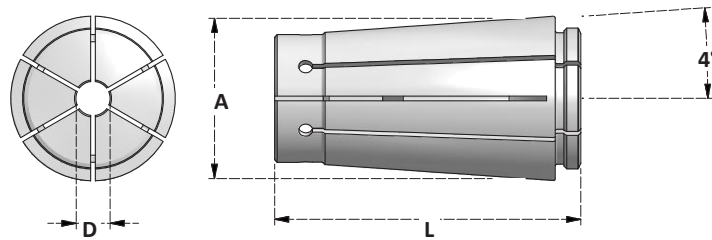
**SERIE DI PINZE IN BOX**
*COLLETS SETS IN BOX*

Articolo	PINZE NELLA SERIE COLLETS IN SET
<b>BX.EOC16-15</b>	EOC16.D2 ÷ D16 x 1mm
<b>BX.EOC25-24</b>	EOC25.D2 ÷ D25 x 1mm
<b>BX.EOC32-30</b>	EOC32.D3 ÷ D32 x 1mm



**PINZE DI SERRAGGIO SKS**

SKS CLAMPING COLLETS

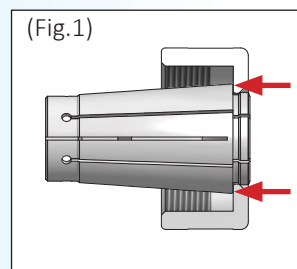


Tipo	D	L	A
<b>SKS10</b>	2÷10	32	15,013
<b>SKS16</b>	3÷16	46	23,939
<b>SKS20</b>	3÷20	54,3	28,5
<b>SKS25</b>	3÷25,4	58,2	35,029

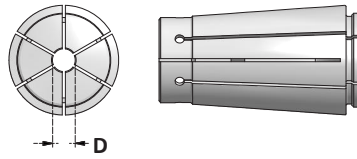
**ERRORE MEDIO DI CONCENTRICITA'**  
AVERAGE OF RUNOUT ACCURACY

**0,005**

- La conicità a 4° e la lunghezza delle pinze SKS consentono di serrare gli utensili con una forza, una rigidità e una precisione elevate, rendendole particolarmente adatte per le lavorazioni alle alte velocità.
- La ghiera SKS agisce sul piano anteriore della pinza (Fig.1) riducendo l'errore di concentricità e rendendo la forza di serraggio uniforme su tutta la lunghezza di presa della pinza.
- L'estrazione con l'anello concentrico delle ghiera SKS aumenta il grado di equilibratura.
- Sono tagliate in 6+6 settori che permettono di serrare gli utensili con diametro inferiore di 0,5mm rispetto al diametro nominale.
- *Small taper angle and clamping length increase force of SKS even at high speeds.*
- *SKS nut works axially on collet's flat (Fig.1) increasing precision and uniforming clamping force on whole length of bore.*
- *Concentric extraction of SKS nuts increases balancing.*
- *Cuttet with 6+6 slots that allow a wide clamping range up to 0,5mm reduced from nominal size.*



**PINZE DI SERRAGGIO**  
 CLAMPING COLLETS

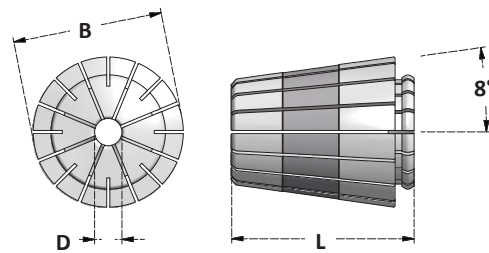
 **0,005**


Articolo	Capacità Range
<b>SKS10.D2</b>	2 ÷ 1,75
<b>SKS10.D2,25</b>	2,25 ÷ 2
<b>SKS10.D2,5</b>	2,5 ÷ 2,25
<b>SKS10.D2,75</b>	2,75 ÷ 2,5
<b>SKS10.D3</b>	3 ÷ 2,75
<b>SKS10.D3,5</b>	3,5 ÷ 3
<b>SKS10.D4</b>	4 ÷ 3,5
<b>SKS10.D4,5</b>	4,5 ÷ 4
<b>SKS10.D5</b>	5 ÷ 4,5
<b>SKS10.D5,5</b>	5,5 ÷ 5
<b>SKS10.D6</b>	6 ÷ 5,5
<b>SKS10.D6,5</b>	6,5 ÷ 6
<b>SKS10.D7</b>	7 ÷ 6,5
<b>SKS10.D7,5</b>	7,5 ÷ 7
<b>SKS10.D8</b>	8 ÷ 7,5
<b>SKS10.D8,5</b>	8,5 ÷ 8
<b>SKS10.D9</b>	9 ÷ 8,5
<b>SKS10.D9,5</b>	9,5 ÷ 9
<b>SKS10.D10</b>	10 ÷ 9,5

Articolo	Capacità Range
<b>SKS16.D3</b>	3 ÷ 2,75
<b>SKS16.D3,5</b>	3,5 ÷ 3
<b>SKS16.D4</b>	4 ÷ 3,5
<b>SKS16.D4,5</b>	4,5 ÷ 4
<b>SKS16.D5</b>	5 ÷ 4,5
<b>SKS16.D5,5</b>	5,5 ÷ 5
<b>SKS16.D6</b>	6 ÷ 5,5
<b>SKS16.D6,5</b>	6,5 ÷ 6
<b>SKS16.D7</b>	7 ÷ 6,5
<b>SKS16.D7,5</b>	7,5 ÷ 7
<b>SKS16.D8</b>	8 ÷ 7,5
<b>SKS16.D8,5</b>	8,5 ÷ 8
<b>SKS16.D9</b>	9 ÷ 8,5
<b>SKS16.D9,5</b>	9,5 ÷ 9
<b>SKS16.D10</b>	10 ÷ 9,5
<b>SKS16.D10,5</b>	10,5 ÷ 10
<b>SKS16.D11</b>	11 ÷ 10,5
<b>SKS16.D11,5</b>	11,5 ÷ 11
<b>SKS16.D12</b>	12 ÷ 11,5
<b>SKS16.D12,5</b>	12,5 ÷ 12
<b>SKS16.D13</b>	13 ÷ 12,5
<b>SKS16.D13,5</b>	13,5 ÷ 13
<b>SKS16.D14</b>	14 ÷ 13,5
<b>SKS16.D14,5</b>	14,5 ÷ 14
<b>SKS16.D15</b>	15 ÷ 14,5
<b>SKS16.D15,5</b>	15,5 ÷ 15
<b>SKS16.D16</b>	16 ÷ 15,5

Articolo	Capacità Range
<b>SKS20.D3</b>	3 ÷ 2,75
<b>SKS20.D3,5</b>	3,5 ÷ 3
<b>SKS20.D4</b>	4 ÷ 3,5
<b>SKS20.D4,5</b>	4,5 ÷ 4
<b>SKS20.D5</b>	5 ÷ 4,5
<b>SKS20.D5,5</b>	5,5 ÷ 5
<b>SKS20.D6</b>	6 ÷ 5,5
<b>SKS20.D6,5</b>	6,5 ÷ 6
<b>SKS20.D7</b>	7 ÷ 6,5
<b>SKS20.D7,5</b>	7,5 ÷ 7
<b>SKS20.D8</b>	8 ÷ 7,5
<b>SKS20.D8,5</b>	8,5 ÷ 8
<b>SKS20.D9</b>	9 ÷ 8,5
<b>SKS20.D9,5</b>	9,5 ÷ 9
<b>SKS20.D10</b>	10 ÷ 9,5
<b>SKS20.D10,5</b>	10,5 ÷ 10
<b>SKS20.D11</b>	11 ÷ 10,5
<b>SKS20.D11,5</b>	11,5 ÷ 11
<b>SKS20.D12</b>	12 ÷ 11,5
<b>SKS20.D12,5</b>	12,5 ÷ 12
<b>SKS20.D13</b>	13 ÷ 12,5
<b>SKS20.D13,5</b>	13,5 ÷ 13
<b>SKS20.D14</b>	14 ÷ 13,5
<b>SKS20.D14,5</b>	14,5 ÷ 14
<b>SKS20.D15</b>	15 ÷ 14,5
<b>SKS20.D15,5</b>	15,5 ÷ 15
<b>SKS20.D16</b>	16 ÷ 15,5
<b>SKS20.D16,5</b>	16,5 ÷ 16
<b>SKS20.D17</b>	17 ÷ 16,5
<b>SKS20.D17,5</b>	17,5 ÷ 17
<b>SKS20.D18</b>	18 ÷ 17,5
<b>SKS20.D18,5</b>	18,5 ÷ 18
<b>SKS20.D19</b>	19 ÷ 18,5
<b>SKS20.D19,5</b>	19,5 ÷ 19
<b>SKS20.D20</b>	20 ÷ 19,5

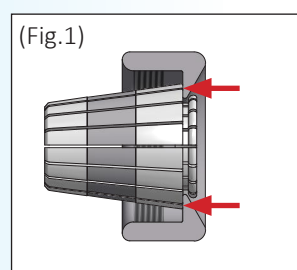
Articolo	Capacità Range
<b>SKS25.D3</b>	3 ÷ 2,75
<b>SKS25.D3,5</b>	3,5 ÷ 3
<b>SKS25.D4</b>	4 ÷ 3,5
<b>SKS25.D4,5</b>	4,5 ÷ 4
<b>SKS25.D5</b>	5 ÷ 4,5
<b>SKS25.D5,5</b>	5,5 ÷ 5
<b>SKS25.D6</b>	6 ÷ 5,5
<b>SKS25.D6,5</b>	6,5 ÷ 6
<b>SKS25.D7</b>	7 ÷ 6,5
<b>SKS25.D7,5</b>	7,5 ÷ 7
<b>SKS25.D8</b>	8 ÷ 7,5
<b>SKS25.D8,5</b>	8,5 ÷ 8
<b>SKS25.D9</b>	9 ÷ 8,5
<b>SKS25.D9,5</b>	9,5 ÷ 9
<b>SKS25.D10</b>	10 ÷ 9,5
<b>SKS25.D10,5</b>	10,5 ÷ 10
<b>SKS25.D11</b>	11 ÷ 10,5
<b>SKS25.D11,5</b>	11,5 ÷ 11
<b>SKS25.D12</b>	12 ÷ 11,5
<b>SKS25.D12,5</b>	12,5 ÷ 12
<b>SKS25.D13</b>	13 ÷ 12,5
<b>SKS25.D13,5</b>	13,5 ÷ 13
<b>SKS25.D14</b>	14 ÷ 13,5
<b>SKS25.D14,5</b>	14,5 ÷ 14
<b>SKS25.D15</b>	15 ÷ 14,5
<b>SKS25.D15,5</b>	15,5 ÷ 15
<b>SKS25.D16</b>	16 ÷ 15,5
<b>SKS25.D16,5</b>	16,5 ÷ 16
<b>SKS25.D17</b>	17 ÷ 16,5
<b>SKS25.D17,5</b>	17,5 ÷ 17
<b>SKS25.D18</b>	18 ÷ 17,5
<b>SKS25.D18,5</b>	18,5 ÷ 18
<b>SKS25.D19</b>	19 ÷ 18,5
<b>SKS25.D19,5</b>	19,5 ÷ 19
<b>SKS25.D20</b>	20 ÷ 19,5
<b>SKS25.D20,5</b>	20,5 ÷ 20
<b>SKS25.D21</b>	21 ÷ 20,5
<b>SKS25.D21,5</b>	21,5 ÷ 21
<b>SKS25.D22</b>	22 ÷ 21,5
<b>SKS25.D22,5</b>	22,5 ÷ 22
<b>SKS25.D23</b>	23 ÷ 22,5
<b>SKS25.D23,5</b>	23,5 ÷ 23
<b>SKS25.D24</b>	24 ÷ 23,5
<b>SKS25.D24,5</b>	24,5 ÷ 24
<b>SKS25.D25</b>	25 ÷ 24,5

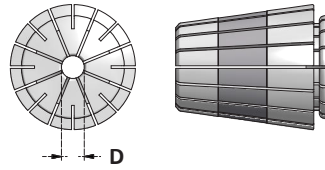
**PINZE DI SERRAGGIO ETS**
*ETS CLAMPING COLLETS*


Tipo	D	L	B
<b>ETS16</b>	1÷10	24	17
<b>ETS20</b>	2÷13	30,5	21,10
<b>ETS25</b>	2÷16	34	26,10
<b>ETS32</b>	3÷20	40	33,10
<b>ETS40</b>	4÷26	45	41,10

- Si montano sui mandrini portapinze ISO DIN 15488 (ER-ERC) utilizzando l'apposita ghiera ETS.
- La ghiera chiudipinza del sistema ETS lavora sul piano anteriore della pinza (Fig.1) riducendo l'errore di concentricità e rendendo la forza di serraggio uniforme su tutta la lunghezza di presa della pinza.
- L'estrazione delle pinze ETS avviene con l'anello concentrico della ghiera aumentando il grado di equilibratura e rendendo queste pinze molto adatte per lavorazioni di precisione ad alta velocità.

- *Adaptable to all toolholders that mount ER/ERC collets by using ETS nuts.*
- *ETS nut works axially on collet's flat (Fig.1) increasing precision and uniforming clamping force on whole length of bore.*
- *Concentric extraction of SKS nuts increases balancing.*
- *Suitable for precision work on high speeds.*



**PINZE DI SERRAGGIO ETS**
*ETS CLAMPING COLLETS*


Articolo	Capacità Range
<b>ETS16.D1</b>	1 ÷ 0,5
<b>ETS16.D2</b>	2 ÷ 1
<b>ETS16.D3</b>	3 ÷ 2
<b>ETS16.D4</b>	4 ÷ 3
<b>ETS16.D5</b>	5 ÷ 4
<b>ETS16.D6</b>	6 ÷ 5
<b>ETS16.D7</b>	7 ÷ 6
<b>ETS16.D8</b>	8 ÷ 7
<b>ETS16.D9</b>	9 ÷ 8
<b>ETS16.D10</b>	10 ÷ 9

Articolo	Capacità Range
<b>ETS20.D2</b>	2 ÷ 1
<b>ETS20.D3</b>	3 ÷ 2
<b>ETS20.D4</b>	4 ÷ 3
<b>ETS20.D5</b>	5 ÷ 4
<b>ETS20.D6</b>	6 ÷ 5
<b>ETS20.D7</b>	7 ÷ 6
<b>ETS20.D8</b>	8 ÷ 7
<b>ETS20.D9</b>	9 ÷ 8
<b>ETS20.D10</b>	10 ÷ 9
<b>ETS20.D11</b>	11 ÷ 10
<b>ETS20.D12</b>	12 ÷ 11
<b>ETS20.D13</b>	13 ÷ 12

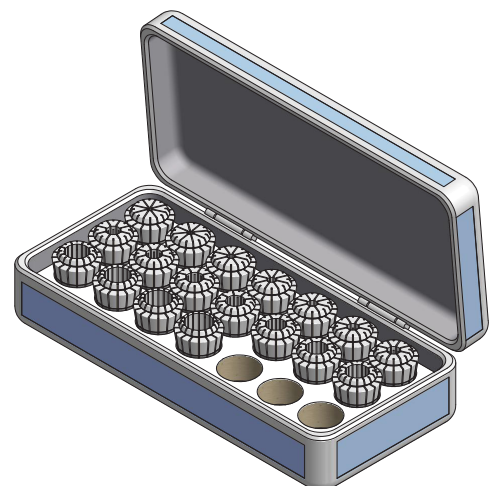
Articolo	Capacità Range
<b>ETS25.D2</b>	2 ÷ 1,5
<b>ETS25.D3</b>	3 ÷ 2
<b>ETS25.D4</b>	4 ÷ 3
<b>ETS25.D5</b>	5 ÷ 4
<b>ETS25.D6</b>	6 ÷ 5
<b>ETS25.D7</b>	7 ÷ 6
<b>ETS25.D8</b>	8 ÷ 7
<b>ETS25.D9</b>	9 ÷ 8
<b>ETS25.D10</b>	10 ÷ 9
<b>ETS25.D11</b>	11 ÷ 10
<b>ETS25.D12</b>	12 ÷ 11
<b>ETS25.D13</b>	13 ÷ 12
<b>ETS25.D14</b>	14 ÷ 13
<b>ETS25.D15</b>	15 ÷ 14
<b>ETS25.D16</b>	16 ÷ 15

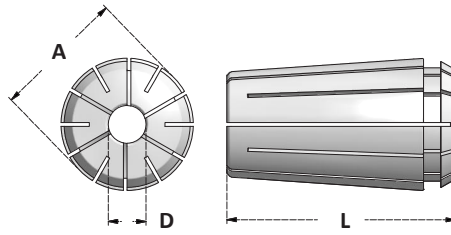
Articolo	Capacità Range
<b>ETS32.D3</b>	3 ÷ 2
<b>ETS32.D4</b>	4 ÷ 3
<b>ETS32.D5</b>	5 ÷ 4
<b>ETS32.D6</b>	6 ÷ 5
<b>ETS32.D7</b>	7 ÷ 6
<b>ETS32.D8</b>	8 ÷ 7
<b>ETS32.D9</b>	9 ÷ 8
<b>ETS32.D10</b>	10 ÷ 9
<b>ETS32.D11</b>	11 ÷ 10
<b>ETS32.D12</b>	12 ÷ 11
<b>ETS32.D13</b>	13 ÷ 12
<b>ETS32.D14</b>	14 ÷ 13
<b>ETS32.D15</b>	15 ÷ 14
<b>ETS32.D16</b>	16 ÷ 15
<b>ETS32.D17</b>	17 ÷ 16
<b>ETS32.D18</b>	18 ÷ 17
<b>ETS32.D19</b>	19 ÷ 18
<b>ETS32.D20</b>	20 ÷ 19

Articolo	Capacità Range
<b>ETS40.D4</b>	4 ÷ 3
<b>ETS40.D5</b>	5 ÷ 4
<b>ETS40.D6</b>	6 ÷ 5
<b>ETS40.D7</b>	7 ÷ 6
<b>ETS40.D8</b>	8 ÷ 7
<b>ETS40.D9</b>	9 ÷ 8
<b>ETS40.D10</b>	10 ÷ 9
<b>ETS40.D11</b>	11 ÷ 10
<b>ETS40.D12</b>	12 ÷ 11
<b>ETS40.D13</b>	13 ÷ 12
<b>ETS40.D14</b>	14 ÷ 13
<b>ETS40.D15</b>	15 ÷ 14
<b>ETS40.D16</b>	16 ÷ 15
<b>ETS40.D17</b>	17 ÷ 16
<b>ETS40.D18</b>	18 ÷ 17
<b>ETS40.D19</b>	19 ÷ 18
<b>ETS40.D20</b>	20 ÷ 19
<b>ETS40.D21</b>	21 ÷ 20
<b>ETS40.D22</b>	22 ÷ 21
<b>ETS40.D23</b>	23 ÷ 22
<b>ETS40.D24</b>	24 ÷ 23
<b>ETS40.D25</b>	25 ÷ 24
<b>ETS40.D26</b>	26 ÷ 25

**SERIE DI PINZE IN BOX**
*COLLETS SETS IN BOX*

Articolo	PINZE NELLA SERIE COLLETS IN SET
<b>BX.ETS16-10</b>	ETS16.D1 ÷ D10 x 1mm
<b>BX.ETS20-12</b>	ETS20.D2 ÷ D13 x 1mm
<b>BX.ETS25-15</b>	ETS25.D3 ÷ D16 x 1mm
<b>BX.ETS32-18</b>	ETS32.D3 ÷ D20 x 1mm
<b>BX.ETS40-23</b>	ETS40.D4 ÷ D26 x 1mm



**PINZE DI SERRAGGIO ETG - ALESAGGI METRICI**
*ETG CLAMPING COLLETS - METRIC SIZES*


Tipo	EU	D	L	A
<b>ETG75</b>	420E	3÷16	46,9	27
<b>ETG100</b>	464E	3÷25	60,32	35,02
<b>ETG150</b>	466E	4÷38	76,2	50,8

Articolo	Capacità Collapse
<b>ETG75.D3</b>	0,4mm
<b>ETG75.D4</b>	0,4mm
<b>ETG75.D5</b>	0,4mm
<b>ETG75.D6</b>	0,4mm
<b>ETG75.D7</b>	0,4mm
<b>ETG75.D8</b>	0,4mm
<b>ETG75.D9</b>	0,4mm
<b>ETG75.D10</b>	0,4mm
<b>ETG75.D11</b>	0,4mm
<b>ETG75.D12</b>	0,4mm
<b>ETG75.D13</b>	0,4mm
<b>ETG75.D14</b>	0,4mm
<b>ETG75.D15</b>	0,4mm
<b>ETG75.D16</b>	0,4mm

Articolo	Capacità Range
<b>ETG100.D3</b>	0,4mm
<b>ETG100.D4</b>	0,4mm
<b>ETG100.D5</b>	0,4mm
<b>ETG100.D6</b>	0,4mm
<b>ETG100.D7</b>	0,4mm
<b>ETG100.D8</b>	0,4mm
<b>ETG100.D9</b>	0,4mm
<b>ETG100.D10</b>	0,4mm
<b>ETG100.D11</b>	0,4mm
<b>ETG100.D12</b>	0,4mm
<b>ETG100.D13</b>	0,4mm
<b>ETG100.D14</b>	0,4mm
<b>ETG100.D15</b>	0,4mm
<b>ETG100.D16</b>	0,4mm
<b>ETG100.D17</b>	0,4mm
<b>ETG100.D18</b>	0,4mm
<b>ETG100.D19</b>	0,4mm
<b>ETG100.D20</b>	0,4mm
<b>ETG100.D21</b>	0,4mm
<b>ETG100.D22</b>	0,4mm
<b>ETG100.D23</b>	0,4mm
<b>ETG100.D24</b>	0,4mm
<b>ETG100.D25</b>	0,4mm

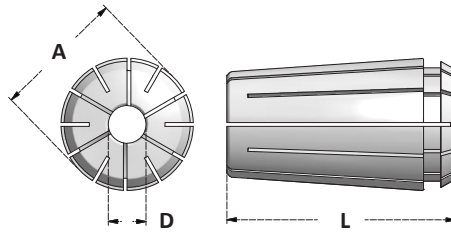
Articolo	Capacità Range
<b>ETG150.D4</b>	0,4mm
<b>ETG150.D5</b>	0,4mm
<b>ETG150.D6</b>	0,4mm
<b>ETG150.D7</b>	0,4mm
<b>ETG150.D8</b>	0,4mm
<b>ETG150.D9</b>	0,4mm
<b>ETG150.D10</b>	0,4mm
<b>ETG150.D11</b>	0,4mm
<b>ETG150.D12</b>	0,4mm
<b>ETG150.D13</b>	0,4mm
<b>ETG150.D14</b>	0,4mm
<b>ETG150.D15</b>	0,4mm
<b>ETG150.D16</b>	0,4mm
<b>ETG150.D17</b>	0,4mm
<b>ETG150.D18</b>	0,4mm
<b>ETG150.D19</b>	0,4mm
<b>ETG150.D20</b>	0,4mm
<b>ETG150.D21</b>	0,4mm
<b>ETG150.D22</b>	0,4mm
<b>ETG150.D23</b>	0,4mm
<b>ETG150.D24</b>	0,4mm
<b>ETG150.D25</b>	0,4mm
<b>ETG150.D26</b>	0,4mm
<b>ETG150.D27</b>	0,4mm
<b>ETG150.D28</b>	0,4mm
<b>ETG150.D29</b>	0,4mm
<b>ETG150.D30</b>	0,4mm
<b>ETG150.D31</b>	0,4mm
<b>ETG150.D32</b>	0,4mm
<b>ETG150.D33</b>	0,4mm
<b>ETG150.D34</b>	0,4mm
<b>ETG150.D35</b>	0,4mm
<b>ETG150.D36</b>	0,4mm
<b>ETG150.D37</b>	0,4mm
<b>ETG150.D38</b>	0,4mm

**MANDRINI PORTAPINZE A RICHIESTA**
*COLLET CHUCKS ON REQUEST*



**PINZE DI SERRAGGIO ETG - ALESAGGI IN POLLICI**

ETG CLAMPING COLLETS - FRACTIONAL SIZES



Tipo	EU	D	L	A
<b>ETG75</b>	420E	3/32÷3/4	1.844	1.062
<b>ETG100</b>	464E	3/32÷1"	2.375	1.379
<b>ETG150</b>	466E	1/2÷1 1/2	3.00	2.00

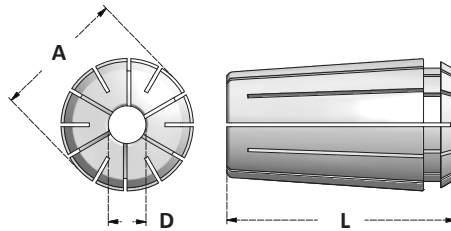
Articolo	Capacità Range
ETG75.D3/32	1/64"
ETG75.D7/64	1/64"
ETG75.D1/8	1/64"
ETG75.D9/64	1/64"
ETG75.D5/32	1/64"
ETG75.D11/64	1/64"
ETG75.D3/16	1/64"
ETG75.D13/64	1/64"
ETG75.D7/32	1/64"
ETG75.D15/64	1/64"
ETG75.D1/4	1/64"
ETG75.D17/64	1/64"
ETG75.D9/32	1/64"
ETG75.D19/64	1/64"
ETG75.D5/16	1/64"
ETG75.D21/64	1/64"
ETG75.D11/32	1/64"
ETG75.D23/64	1/64"
ETG75.D3/8	1/64"
ETG75.D25/64	1/64"
ETG75.D13/32	1/64"
ETG75.D27/64	1/64"
ETG75.D7/16	1/64"
ETG75.D29/64	1/64"
ETG75.D15/32	1/64"
ETG75.D31/64	1/64"
ETG75.D1/2	1/64"
ETG75.D33/64	1/64"
ETG75.D17/32	1/64"
ETG75.D35/64	1/64"
ETG75.D9/16	1/64"
ETG75.D37/64	1/64"
ETG75.D19/32	1/64"
ETG75.D39/64	1/64"
ETG75.D5/8	1/64"
ETG75.D41/64	1/64"
ETG75.D21/32	1/64"
ETG75.D43/64	1/64"
ETG75.D11/16	1/64"
ETG75.D45/64	1/64"
ETG75.D23/32	1/64"
ETG75.D47/64	1/64"
ETG75.D3/4	1/64"

Articolo	Capacità Range
ETG100.D3/32	1/64"
ETG100.D7/64	1/64"
ETG100.D1/8	1/64"
ETG100.D9/64	1/64"
ETG100.D5/32	1/64"
ETG100.D11/64	1/64"
ETG100.D3/16	1/64"
ETG100.D13/64	1/64"
ETG100.D7/32	1/64"
ETG100.D15/64	1/64"
ETG100.D1/4	1/64"
ETG100.D17/64	1/64"
ETG100.D9/32	1/64"
ETG100.D19/64	1/64"
ETG100.D5/16	1/64"
ETG100.D21/64	1/64"
ETG100.D11/32	1/64"
ETG100.D23/64	1/64"
ETG100.D3/8	1/64"
ETG100.D25/64	1/64"
ETG100.D13/32	1/64"
ETG100.D27/64	1/64"
ETG100.D7/16	1/64"
ETG100.D29/64	1/64"
ETG100.D15/32	1/64"
ETG100.D31/64	1/64"
ETG100.D1/2	1/64"
ETG100.D33/64	1/64"
ETG100.D17/32	1/64"
ETG100.D35/64	1/64"
ETG100.D9/16	1/64"
ETG100.D37/64	1/64"
ETG100.D19/32	1/64"
ETG100.D39/64	1/64"
ETG100.D5/8	1/64"
ETG100.D41/64	1/64"
ETG100.D21/32	1/64"
ETG100.D43/64	1/64"
ETG100.D11/16	1/64"
ETG100.D45/64	1/64"
ETG100.D23/32	1/64"
ETG100.D47/64	1/64"

Articolo	Capacità Range
ETG100.D3/4	1/64"
ETG100.D49/64	1/64"
ETG100.D25/32	1/64"
ETG100.D51/64	1/64"
ETG100.D13/16	1/64"
ETG100.D53/64	1/64"
ETG100.D27/32	1/64"
ETG100.D55/64	1/64"
ETG100.D7/8	1/64"
ETG100.D57/64	1/64"
ETG100.D29/32	1/64"
ETG100.D59/64	1/64"
ETG100.D15/16	1/64"
ETG100.D61/64	1/64"
ETG100.D31/32	1/64"
ETG100.D63/64	1/64"
ETG100.D1"	1/64"

**PINZE DI SERRAGGIO ETG - ALESAGGI IN POLLICI**

ETG CLAMPING COLLETS - FRACTIONAL SIZES



Tipo	EU	D	L	A
<b>ETG75</b>	420E	3/32÷3/4	1.844	1.062
<b>ETG100</b>	464E	3/32÷1"	2.375	1.379
<b>ETG150</b>	466E	1/2÷1 1/2	3.00	2.00

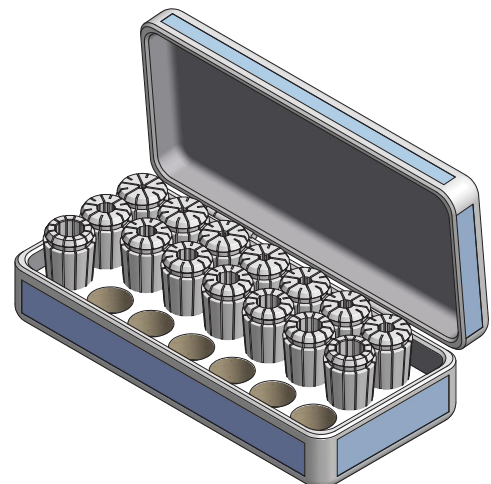
Articolo	Capacità Range
<b>ETG150.D1/2</b>	1/64"
<b>ETG150.D33/64</b>	1/64"
<b>ETG150.D17/32</b>	1/64"
<b>ETG150.D35/64</b>	1/64"
<b>ETG150.D9/16</b>	1/64"
<b>ETG150.D37/64</b>	1/64"
<b>ETG150.D19/32</b>	1/64"
<b>ETG150.D39/64</b>	1/64"
<b>ETG150.D5/8</b>	1/64"
<b>ETG150.D41/64</b>	1/64"
<b>ETG150.D21/32</b>	1/64"
<b>ETG150.D43/64</b>	1/64"
<b>ETG150.D11/16</b>	1/64"
<b>ETG150.D45/64</b>	1/64"
<b>ETG150.D23/32</b>	1/64"
<b>ETG150.D47/64</b>	1/64"
<b>ETG150.D3/4</b>	1/64"
<b>ETG150.D49/64</b>	1/64"
<b>ETG150.D25/32</b>	1/64"
<b>ETG150.D51/64</b>	1/64"
<b>ETG150.D13/16</b>	1/64"
<b>ETG150.D53/64</b>	1/64"
<b>ETG150.D27/32</b>	1/64"
<b>ETG150.D55/64</b>	1/64"
<b>ETG150.D7/8</b>	1/64"
<b>ETG150.D57/64</b>	1/64"
<b>ETG150.D29/32</b>	1/64"
<b>ETG150.D59/64</b>	1/64"
<b>ETG150.D15/16</b>	1/64"
<b>ETG150.D61/64</b>	1/64"
<b>ETG150.D31/32</b>	1/64"
<b>ETG150.D63/64</b>	1/64"
<b>ETG150.D1"</b>	1/64"

Articolo	Capacità Range
<b>ETG150.D1-1/64</b>	1/64"
<b>ETG150.D1-1/32</b>	1/64"
<b>ETG150.D1-3/64</b>	1/64"
<b>ETG150.D1-1/16</b>	1/64"
<b>ETG150.D1-5/64</b>	1/64"
<b>ETG150.D1-3/32</b>	1/64"
<b>ETG150.D1-7/64</b>	1/64"
<b>ETG150.D1-1/8</b>	1/64"
<b>ETG150.D1-9/64</b>	1/64"
<b>ETG150.D1-5/32</b>	1/64"
<b>ETG150.D1-11/64</b>	1/64"
<b>ETG150.D1-3/16</b>	1/64"
<b>ETG150.D1-13/64</b>	1/64"
<b>ETG150.D1-7/32</b>	1/64"
<b>ETG150.D1-15/64</b>	1/64"
<b>ETG150.D1-1/4</b>	1/64"
<b>ETG150.D1-17/64</b>	1/64"
<b>ETG150.D1-9/32</b>	1/64"
<b>ETG150.D1-19/64</b>	1/64"
<b>ETG150.D1-5/16</b>	1/64"
<b>ETG150.D1-21/64</b>	1/64"
<b>ETG150.D1-11/32</b>	1/64"
<b>ETG150.D1-23/64</b>	1/64"
<b>ETG150.D1-3/8</b>	1/64"
<b>ETG150.D1-25/64</b>	1/64"
<b>ETG150.D1-13/32</b>	1/64"
<b>ETG150.D1-27/64</b>	1/64"
<b>ETG150.D1-7/16</b>	1/64"
<b>ETG150.D1-29/64</b>	1/64"
<b>ETG150.D1-15/32</b>	1/64"
<b>ETG150.D1-31/64</b>	1/64"
<b>ETG150.D1-1/2</b>	1/64"

**SERIE DI PINZE IN BOX**

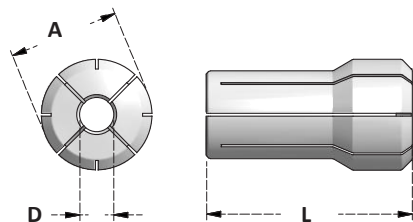
COLLETS SETS IN BOX

Articolo	PINZE NELLA SERIE COLLETS IN SET
<b>BX.ETG100P-15</b>	ETG100.D1/8 ÷ D1" x16ths
<b>BX.ETG100P-30</b>	ETG100.D3/32 ÷ D1" x32nds



**PINZE DI SERRAGGIO EDA - ALESAGGI METRICI**

EDA CLAMPING COLLETS - METRIC SIZES



Tipo	EU	D	L	A
<b>EDA300</b>	416E	1,5÷6	25,4	9,52
<b>EDA200</b>	417E	1,5÷10	30	13,69
<b>EDA100</b>	418E	2÷14,5	36,3	19,53
<b>EDA180</b>	419E	2÷20	41,4	26,03

Articolo
EDA300.D1
EDA300.D1,5
EDA300.D2
EDA300.D2,5
EDA300.D3
EDA300.D3,5
EDA300.D4
EDA300.D4,5
EDA300.D5
EDA300.D5,5
EDA300.D6

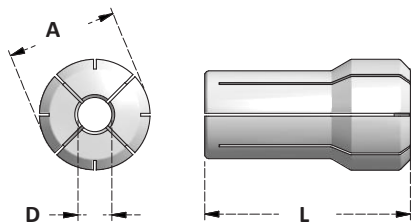
Articolo
EDA200.D1
EDA200.D1,5
EDA200.D2
EDA200.D2,5
EDA200.D3
EDA200.D3,5
EDA200.D4
EDA200.D4,5
EDA200.D5
EDA200.D5,5
EDA200.D6
EDA200.D6,5
EDA200.D7
EDA200.D7,5
EDA200.D8
EDA200.D8,5
EDA200.D9
EDA200.D9,5
EDA200.D10

Articolo
EDA100.D2
EDA100.D2,5
EDA100.D3
EDA100.D3,5
EDA100.D4
EDA100.D4,5
EDA100.D5
EDA100.D5,5
EDA100.D6
EDA100.D6,5
EDA100.D7
EDA100.D7,5
EDA100.D8
EDA100.D8,5
EDA100.D9
EDA100.D9,5
EDA100.D10
EDA100.D10,5
EDA100.D11
EDA100.D11,5
EDA100.D12
EDA100.D12,5
EDA100.D13
EDA100.D13,5
EDA100.D14
EDA100.D14,5

Articolo
EDA180.D2
EDA180.D2,5
EDA180.D3
EDA180.D3,5
EDA180.D4
EDA180.D4,5
EDA180.D5
EDA180.D5,5
EDA180.D6
EDA180.D6,5
EDA180.D7
EDA180.D7,5
EDA180.D8
EDA180.D8,5
EDA180.D9
EDA180.D9,5
EDA180.D10
EDA180.D10,5
EDA180.D11
EDA180.D11,5
EDA180.D12
EDA180.D12,5
EDA180.D13
EDA180.D13,5
EDA180.D14
EDA180.D14,5
EDA180.D15
EDA180.D15,5
EDA180.D16
EDA180.D16,5
EDA180.D17
EDA180.D17,5
EDA180.D18
EDA180.D18,5
EDA180.D19
EDA180.D19,5
EDA180.D20

**PINZE DI SERRAGGIO EDA - ALESAGGI IN POLLICI**

EDA CLAMPING COLLETS - FRACTIONAL SIZES

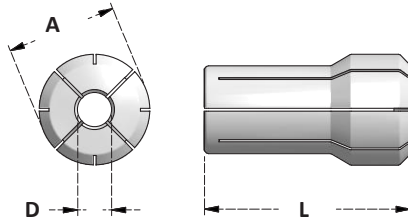


Tipo	EU	D	L	A
<b>EDA300</b>	416E	1/16 ÷ 1/4	1.00	.375
<b>EDA200</b>	417E	1/16 ÷ 3/8	1.19	.539
<b>EDA100</b>	418E	1/16 ÷ 9/16	1.44	.769
<b>EDA180</b>	419E	1/16 ÷ 49/64	1.63	1.035

Articolo
EDA300.D1/32
EDA300.D3/64
EDA300.D1/16
EDA300.D5/64
EDA300.D3/32
EDA300.D7/64
EDA300.D1/8
EDA300.D9/64
EDA300.D5/32
EDA300.D11/64
EDA300.D3/16
EDA300.D13/64
EDA300.D7/32
EDA300.D15/64
EDA300.D1/4

Articolo
EDA200.D3/64
EDA200.D1/16
EDA200.D5/64
EDA200.D3/32
EDA200.D7/64
EDA200.D1/8
EDA200.D9/64
EDA200.D5/32
EDA200.D11/64
EDA200.D3/16
EDA200.D13/64
EDA200.D7/32
EDA200.D15/64
EDA200.D1/4
EDA200.D17/64
EDA200.D9/32
EDA200.D19/64
EDA200.D5/16
EDA200.D21/64
EDA200.D11/32
EDA200.D23/64
EDA200.D3/8
EDA200.D25/64

Articolo
EDA100.D3/64
EDA100.D1/16
EDA100.D5/64
EDA100.D3/32
EDA100.D7/64
EDA100.D1/8
EDA100.D9/64
EDA100.D5/32
EDA100.D11/64
EDA100.D3/16
EDA100.D13/64
EDA100.D7/32
EDA100.D15/64
EDA100.D1/4
EDA100.D17/64
EDA100.D9/32
EDA100.D19/64
EDA100.D5/16
EDA100.D21/64
EDA100.D11/32
EDA100.D23/64
EDA100.D3/8
EDA100.D25/64
EDA100.D13/32
EDA100.D27/64
EDA100.D7/16
EDA100.D29/64
EDA100.D15/32
EDA100.D31/64
EDA100.D1/2
EDA100.D33/64
EDA100.D17/32
EDA100.D35/64
EDA100.D9/16

**PINZE DI SERRAGGIO EDA - ALESAGGI IN POLLICI**
*EDA CLAMPING COLLETS - FRACTIONAL SIZES*


Tipo	EU	D	L	A
<b>EDA300</b>	416E	1/16 ÷ 1/4	1.00	.375
<b>EDA200</b>	417E	1/16 ÷ 3/8	1.19	.539
<b>EDA100</b>	418E	1/16 ÷ 9/16	1.44	.769
<b>EDA180</b>	419E	1/16 ÷ 49/64	1.63	1.035

Articolo
EDA180.D3/64
EDA180.D1/16
EDA180.D5/64
EDA180.D3/32
EDA180.D7/64
EDA180.D1/8
EDA180.D9/64
EDA180.D5/32
EDA180.D11/64
EDA180.D3/16
EDA180.D13/64
EDA180.D7/32
EDA180.D15/64
EDA180.D1/4
EDA180.D17/64
EDA180.D9/32
EDA180.D19/64
EDA180.D5/16
EDA180.D21/64
EDA180.D11/32
EDA180.D23/64
EDA180.D3/8
EDA180.D25/64
EDA180.D13/32
EDA180.D27/64
EDA180.D7/16
EDA180.D29/64
EDA180.D15/32
EDA180.D31/64

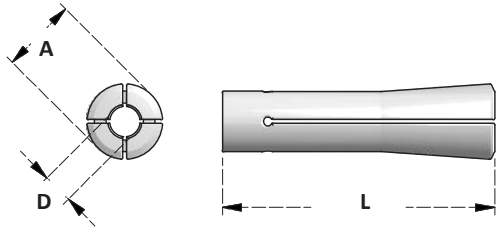
Articolo
EDA180.D1/2
EDA180.D33/64
EDA180.D17/32
EDA180.D35/64
EDA180.D9/16
EDA180.D37/64
EDA180.D19/32
EDA180.D39/64
EDA180.D5/8
EDA180.D41/64
EDA180.D21/32
EDA180.D43/64
EDA180.D11/16
EDA180.D45/64
EDA180.D23/32
EDA180.D47/64
EDA180.D3/4
EDA180.D49/64

**SERIE DI PINZE IN BOX**
*COLLETS SETS IN BOX*

Articolo	PINZE NELLA SERIE COLLETS IN SET
<b>BX.EDA300P-5</b>	EDA300P.D1/8 ÷ D1/4 x32nds
<b>BX.EDA300P-9</b>	EDA300P.D1/8 ÷ D1/4 x64ths
<b>BX.EDA200P-9</b>	EDA200P.D1/8 ÷ D3/8 x32nds
<b>BX.EDA200P-17</b>	EDA200P.D1/8 ÷ D3/8 x64ths
<b>BX.EDA100P-11</b>	EDA100P.D1/4 ÷ D9/16 x32nds
<b>BX.EDA100P-21</b>	EDA100P.D1/4 ÷ D9/16 x64ths
<b>BX.EDA180P-17</b>	EDA180P.D1/4 ÷ D3/4 x32nds
<b>BX.EDA180P-30</b>	EDA180P.D1/4 ÷ D3/4 x64ths

**PINZE DI SERRAGGIO P8**

*P8 CLAMPING COLLETS*

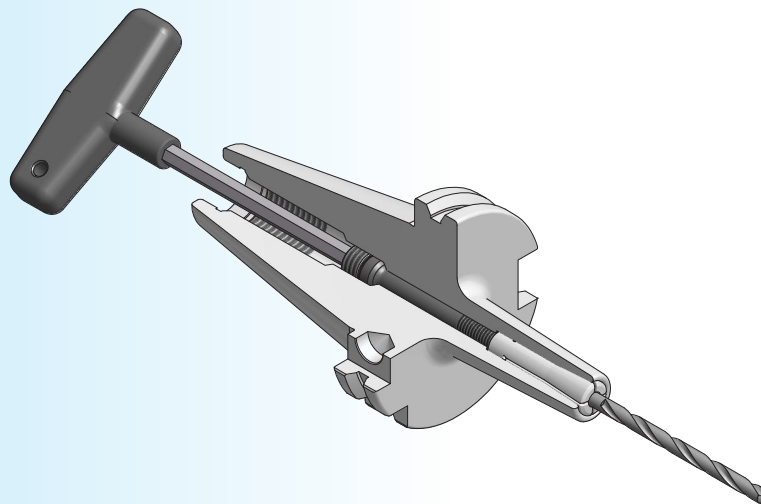


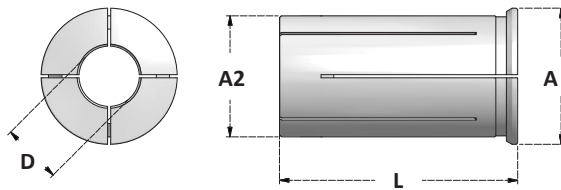
Tipo	D	L	A
<b>P8</b>	3÷6	36	10

Articolo
<b>P8.D3</b>
<b>P8.D4</b>
<b>P8.D5</b>
<b>P8.D6</b>

**ERRORE MEDIO DI CONCENTRICITA'**  
AVERAGE OF RUNOUT ACCURACY

**0,005**



**PINZE DI SERRAGGIO CILINDRICHE A 4 TAGLI - PER MANDRINI A FORTE SERRAGGIO**
*CYLINDRICAL COLLETS WITH 4 SLOTS - FOR POWER MILLING CHUCKS*


Tipo	L	A	A2
<b>4SR20</b>	54	25	20
<b>4SR32</b>	63	36	32

**A TENUTA MECCANICA**  
 SOLID SEALED

**MAX**  
**120bar**
**ERRORE MEDIO DI CONCENTRICITA'**  
 AVERAGE OF RUNOUT ACCURACY

**0,005**

- La pinza deve essere inserita nel mandrino a forte serraggio fino al contatto della flangia sul piano del mandrino.
- I tagli corti della pinza bloccano il flusso del refrigerante per farlo defluire solo dal foro dell'utensile.
- L'utensile, di diametro in tolleranza h6, deve essere bloccato per tutta la lunghezza della pinza.
- *Collet must be inserted in milling chuck until contact with shoulder.*
- *Collets are mechanical sealed by slots.*
- *Coolant flow is direct only throught hole of cutting tool.*
- *Cutting tool shank (tolerance h6) must be completely clamped for the full lenght of collet.*

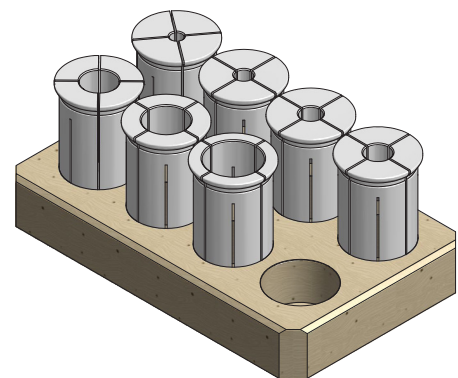
Articolo
* 4SR20.D3
* 4SR20.D4
4SR20.D5
4SR20.D6
4SR20.D7
4SR20.D8
4SR20.D9
4SR20.D10
4SR20.D11
4SR20.D12
4SR20.D13
4SR20.D14
4SR20.D15
4SR20.D16
4SR20.D17
4SR20.D18

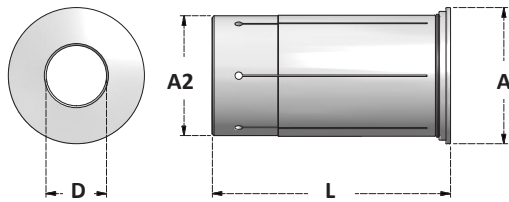
\* NON A TENUTA  
 NOT SEALED

Articolo
4SR32.D6
4SR32.D7
4SR32.D8
4SR32.D9
4SR32.D10
4SR32.D11
4SR32.D12
4SR32.D13
4SR32.D14
4SR32.D15
4SR32.D16
4SR32.D17
4SR32.D18
4SR32.D19
4SR32.D20
4SR32.D21
4SR32.D22
4SR32.D23
4SR32.D24
4SR32.D25

**SERIE DI PINZE IN BOX**  
*COLLETS SETS IN BOX*

Articolo	PINZE NELLA SERIE COLLETS IN SET
<b>TY.4SR20-5</b>	4SR20.D6- 8- 10- 12- 16
<b>TY.4SR32-7</b>	4SR32.D6- 8- 10- 12- 16- 20- 25



**PINZE DI SERRAGGIO CILINDRICHE A 6 TAGLI - PER MANDRINI IDRAULICI**
*CYLINDRICAL COLLETS WITH 6 SLOTS - FOR HYDRAULIC CHUCKS*


Tipo	L	A	A2
<b>6SR12</b>	47	20	12
<b>6SR20</b>	52,5	30	20
<b>6SR32</b>	63	36	32

**A TENUTA MECCANICA**  
SOLID SEALED

**MAX**  
**120bar**
**ERRORE MEDIO DI CONCENTRICITA'**  
AVERAGE OF RUNOUT ACCURACY

**0,005**

- Inserire la pinza nel mandrino idraulico fino al contatto della flangia sul piano del mandrino.
- I tagli della pinza impediscono la fuoriuscita del refrigerante che passa solo attraverso al foro dell'utensile.
- Il gambo dell'utensile, in tolleranza h6, deve essere serrato per tutta la lunghezza della pinza.

- *Collet must be inserted in hydraulic chuck until contact with shoulder*
- *Slots contain and direct the coolant throught the hole of the cutting tool.*
- *Shank of tool (tolerance h6) must be clamped for all collet lenght.*

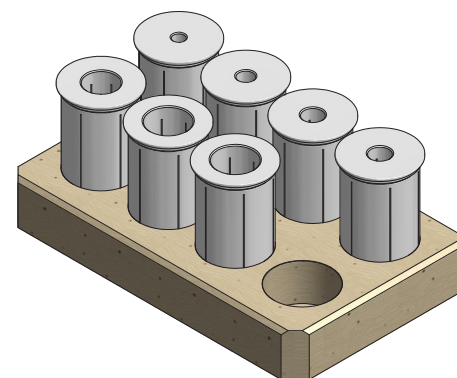
Articolo
<b>6SR12.D3</b>
<b>6SR12.D4</b>
<b>6SR12.D5</b>
<b>6SR12.D6</b>
<b>6SR12.D7</b>
<b>6SR12.D8</b>
<b>6SR12.D10</b>

Articolo
<b>6SR20.D3</b>
<b>6SR20.D4</b>
<b>6SR20.D5</b>
<b>6SR20.D6</b>
<b>6SR20.D7</b>
<b>6SR20.D8</b>
<b>6SR20.D9</b>
<b>6SR20.D10</b>
<b>6SR20.D11</b>
<b>6SR20.D12</b>
<b>6SR20.D13</b>
<b>6SR20.D14</b>
<b>6SR20.D15</b>
<b>6SR20.D16</b>
<b>6SR20.D17</b>
<b>6SR20.D18</b>

Articolo
<b>6SR32.D6</b>
<b>6SR32.D8</b>
<b>6SR32.D10</b>
<b>6SR32.D12</b>
<b>6SR32.D14</b>
<b>6SR32.D16</b>
<b>6SR32.D20</b>
<b>6SR32.D25</b>

**SERIE DI PINZE IN BOX**  
*COLLETS SETS IN BOX*

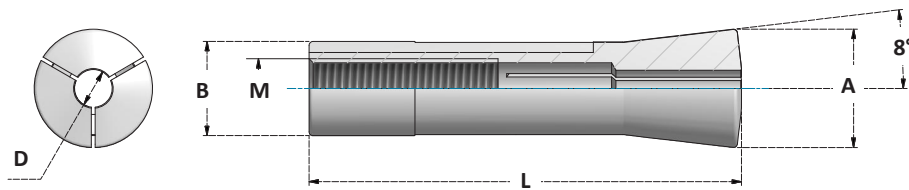
Articolo	PINZE NELLA SERIE COLLETS IN SET
<b>TY.6SR20-5</b>	6SR20.D6- 8- 10- 12- 16
<b>TY.6SR32-7</b>	6SR32.D6- 8- 10- 12- 16- 20- 25





**PINZE DI SERRAGGIO R8**

*R8 CLAMPING COLLETS*



	L	A	B	M
inch	4.00"	1.25"	.9488"	7/16" - 20UNF-2B
mm	101,6	31,75	24,10	

**DIMENSIONI METRICHE**

*METRIC SIZES*

Articolo
R8.D1
R8.D2
R8.D3
R8.D4
R8.D5
R8.D6
R8.D7
R8.D8
R8.D9
R8.D10
R8.D11
R8.D12
R8.D13
R8.D14
R8.D15
R8.D16
R8.D17
R8.D18
R8.D19
R8.D20

**DIMENSIONI IN POLLICI**

*FRACTIONAL SIZES*

Articolo
R8.D1/16
R8.D3/32
R8.D1/8
R8.D5/32
R8.D3/16
R8.D7/32
R8.D1/4
R8.D9/32
R8.D5/16
R8.D11/32
R8.D3/8
R8.D13/32
R8.D7/16
R8.D15/32
R8.D1/2
R8.D17/32
R8.D9/16
R8.D19/32
R8.D5/8
R8.D21/32
R8.D11/16
R8.D23/32
R8.D3/4
R8.D25/32
R8.D13/16
R8.D27/32
R8.D7/8

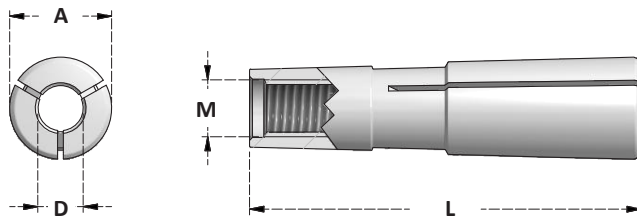
**SERIE DI PINZE IN BOX**

*COLLETS SETS IN BOX*

Articolo	PINZE NELLA SERIE COLLETS IN SET
<b>BX.R8M-19</b>	R8.D2 ÷ D20 x 1,0mm
<b>BX.R8P-13</b>	R8.D1/8-3/16-1/4-5/16-3/8-7/16-1/2-9/16-5/8-11/16-3/4-13/16-7/8
<b>BX.R8P-27</b>	R8.D1/16- 3/32- 1/8- 5/32- 3/16- 7/32- 1/4- 9/32- 5/16- 11/32- 3/8- 13/32- 7/16- 15/32- 1/2- 17/32- 9/16- 19/32- 5/8- 21/32- 11/16- 23/32- 3/4- 25/32 - 13/16- 27/32- 7/8

**PINZE PORTAUTENSILI A CONO MORSE**

MORSE TAPER TOOL CLAMPING COLLETS



Tipo	EU	A	L	M
<b>CP-CM2</b>	503E	18	69	M10
<b>CP-CM3</b>	536E	24,1	86	M12
<b>CP-CM4</b>	539E	31,6	109	M16
<b>MT2</b>		.708	2 7/8	3/8- 16
<b>MT3</b>		.964	4 1/64	3/8- 16

Articolo
CM2.D3
CM2.D4
CM2.D5
CM2.D6
CM2.D7
CM2.D8
CM2.D9
CM2.D10
CM2.D11
CM2.D12
CM2.D13

Articolo
CM3.D3
CM3.D4
CM3.D5
CM3.D6
CM3.D7
CM3.D8
CM3.D9
CM3.D10
CM3.D11
CM3.D12
CM3.D13
CM3.D14
CM3.D15
CM3.D16
CM3.D17
CM3.D18

Articolo
CM4.D4
CM4.D5
CM4.D6
CM4.D7
CM4.D8
CM4.D9
CM4.D10
CM4.D11
CM4.D12
CM4.D13
CM4.D14
CM4.D15
CM4.D16
CM4.D17
CM4.D18
CM4.D19
CM4.D20
CM4.D21
CM4.D22
CM4.D23
CM4.D24
CM4.D25

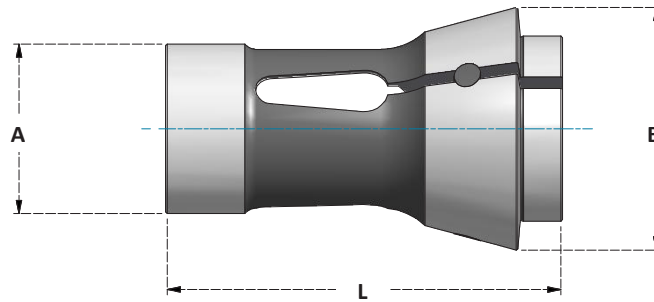
Articolo
MT2.D1/8
MT2.D3/16
MT2.D1/4
MT2.D5/16
MT2.D3/8
MT2.D7/16
MT2.D1/2

Articolo
MT3.D1/8
MT3.D3/16
MT3.D1/4
MT3.D5/16
MT3.D3/8
MT3.D7/16
MT3.D1/2
MT3.D9/16
MT3.D5/8
MT3.D11/16
MT3.D3/4

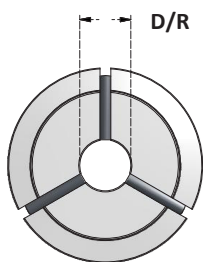
**DIN6343**

**PINZE DI SERRAGGIO BARRA**

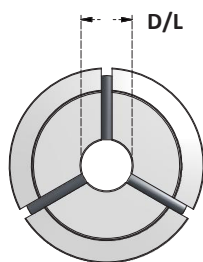
*WORKHOLDING COLLETS*



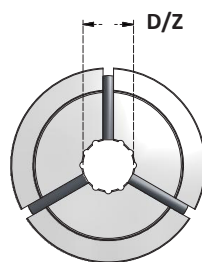
Tipo	D	E	Q	A	B	L
<b>140E</b>	3 ÷ 16	4 ÷ 14	6 ÷ 12	22	30	55
<b>161E</b>	3 ÷ 25	4 ÷ 22	4 ÷ 18	32	45	75
<b>173E</b>	4 ÷ 42	5 ÷ 36	8 ÷ 30	48	60	94
<b>177E</b>	6 ÷ 52	-	-	58	70	94
<b>185E</b>	5 ÷ 60	10 ÷ 45	10 ÷ 40	66	84	110



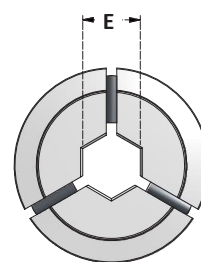
R= RIGATE  
R= GROOVED



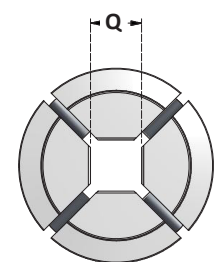
L= LISCIE  
L= SMOOTH



Z= ZIGRINATE A RICHIESTA  
Z= SERRATED ON REQUEST



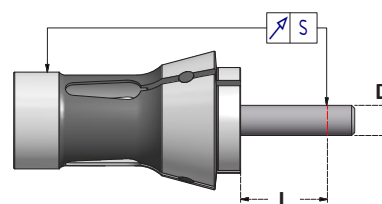
E= ESAGONALI  
E= HEXAGONAL

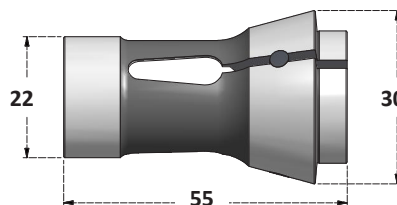
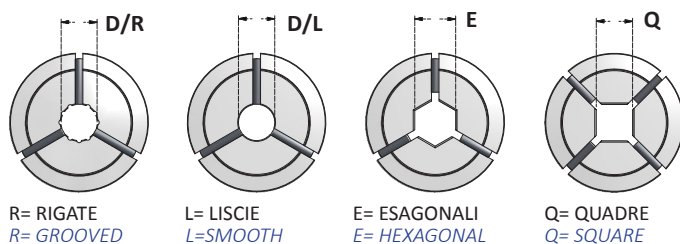


Q= QUADRE  
Q= SQUARE

- Utilizzate per il serraggio della barra sui torni automatici convenzionali e a controllo numerico
- Costruite in acciaio per molle
- Temperate, rinvenute: HRC58-60 per la testa HRC42-45 per la parte elastica
- Rettificate di precisione internamente ed esternamente.
- Profilo spogliato sul cono per incrementare la forza di bloccaggio ed evitare il danneggiamento della sede pinza.
- *Used on bar automatics and CNC lathes*
- *Made of spring steel*
- *Quenched and tempered: RC58-60 for clamping head RC42-45 for spring body*
- *Precision grinded on bore and back bearing*
- *Cam grinded on taper for max clamping power*

D - h5	L	S
3mm ÷ 6mm	16	<b>0,02</b>
6mm ÷ 10mm	25	
10mm ÷ 18mm	40	<b>0,03</b>
18mm ÷ 24mm	50	
24mm ÷ 30mm	60	<b>0,04</b>
30mm ÷ 50mm	80	
50mm ÷ 60mm	100	



**PINZE DI SERRAGGIO BARRA**
*WORKHOLDING COLLETS*


Articolo
140E.D1L
140E.D2L
140E.D3L
140E.D4L
140E.D5L
140E.D6L
140E.D7L
140E.D8R
140E.D9R
140E.D10R
140E.D11R
140E.D12R
140E.D13R
140E.D14R
140E.D15R
140E.D16R
140E.D17R
140E.D18R

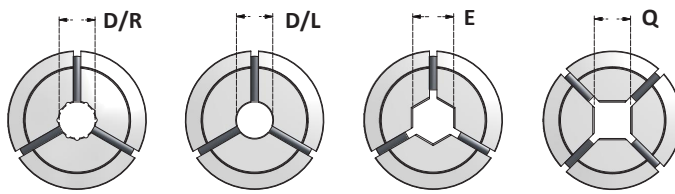
Articolo
140E.E4
140E.E5
140E.E6
140E.E7
140E.E8
140E.E9
140E.E10
140E.E11
140E.E12
140E.E13
140E.E14
140E.E15

Articolo
140E.Q4
140E.Q5
140E.Q6
140E.Q7
140E.Q8
140E.Q9
140E.Q10
140E.Q11
140E.Q12

**ALTRE A RICHIESTA**  
*OTHERS ON REQUEST*

**PINZE DI SERRAGGIO BARRA**

*WORKHOLDING COLLETS*

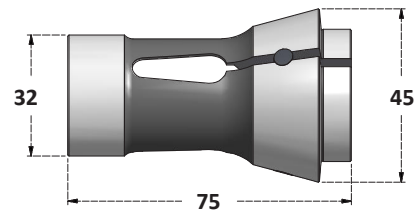


R= RIGATE  
R= GROOVED

L= LISCIIE  
L=SMOOTH

E= ESAGONALI  
E= HEXAGONAL

Q= QUADRE  
Q= SQUARE



Articolo
161E.D1L
161E.D2L
161E.D3L
161E.D4L
161E.D5L
161E.D6L
161E.D7L
161E.D8R
161E.D9R
161E.D10R
161E.D11R
161E.D12R
161E.D13R
161E.D14R
161E.D15R
161E.D16R
161E.D17R
161E.D18R
161E.D19R
161E.D20R
161E.D21R
161E.D22R
161E.D23R
161E.D24R
161E.D25R
161E.D26R

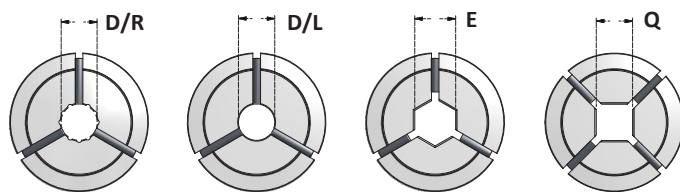
Articolo
161E.E4
161E.E5
161E.E6
161E.E7
161E.E8
161E.E9
161E.E10
161E.E11
161E.E12
161E.E13
161E.E14
161E.E15
161E.E16
161E.E17
161E.E18
161E.E19
161E.E20
161E.E21
161E.E22

Articolo
161E.Q4
161E.Q5
161E.Q6
161E.Q7
161E.Q8
161E.Q9
161E.Q10
161E.Q11
161E.Q12
161E.Q13
161E.Q14
161E.Q15
161E.Q16
161E.Q17
161E.Q18

**ALTRE A RICHIESTA**  
*OTHERS ON REQUEST*

**PINZE DI SERRAGGIO BARRA**

*WORKHOLDING COLLETS*

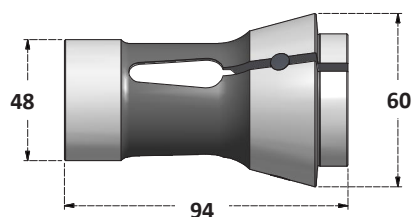


R= RIGATE  
R= GROOVED

L= LISCIIE  
L=SMOOTH

E= ESAGONALI  
E= HEXAGONAL

Q= QUADRE  
Q= SQUARE



Articolo
173E.D3L
173E.D4L
173E.D5L
173E.D6L
173E.D7L
173E.D8R
173E.D9R
173E.D10R
173E.D11R
173E.D12R
173E.D13R
173E.D14R
173E.D15R
173E.D16R
173E.D17R
173E.D18R
173E.D19R
173E.D20R
173E.D21R
173E.D22R
173E.D23R
173E.D24R
173E.D25R
173E.D26R
173E.D27R
173E.D28R
173E.D29R
173E.D30R
173E.D31R
173E.D32R
173E.D33R
173E.D34R
173E.D35R
173E.D36R
173E.D37R
173E.D38R
173E.D39R
173E.D40R
173E.D41R
173E.D42R

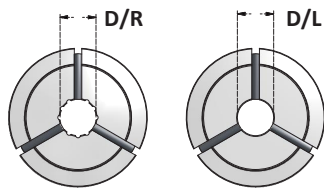
Articolo
173E.E4
173E.E5
173E.E6
173E.E7
173E.E8
173E.E9
173E.E10
173E.E11
173E.E12
173E.E13
173E.E14
173E.E15
173E.E16
173E.E17
173E.E18
173E.E19
173E.E20
173E.E21
173E.E22
173E.E23
173E.E24
173E.E25
173E.E26
173E.E27
173E.E28
173E.E29
173E.E30
173E.E31
173E.E32
173E.E33
173E.E34
173E.E35
173E.E36

Articolo
173E.Q4
173E.Q5
173E.Q6
173E.Q7
173E.Q8
173E.Q9
173E.Q10
173E.Q11
173E.Q12
173E.Q13
173E.Q14
173E.Q15
173E.Q16
173E.Q17
173E.Q18
173E.Q19
173E.Q20
173E.Q21
173E.Q22
173E.Q23
173E.Q24
173E.Q25
173E.Q26
173E.Q27
173E.Q28
173E.Q29
173E.Q30

**ALTRE A RICHIESTA**  
*OTHERS ON REQUEST*

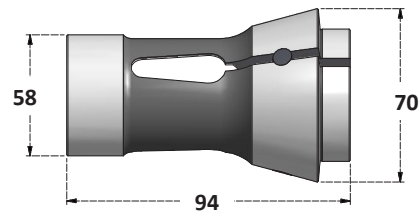
**PINZE DI SERRAGGIO BARRA**

*WORKHOLDING COLLETS*



R= RIGATE  
R= GROOVED

L= LISCIE  
L= SMOOTH



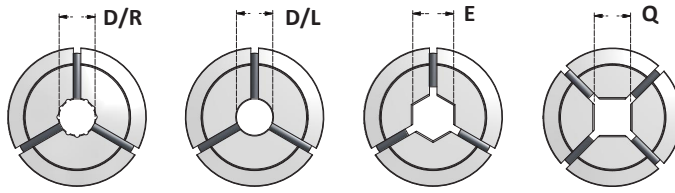
Articolo
177E.D5L
177E.D6L
177E.D7L
177E.D8R
177E.D9R
177E.D10R
177E.D11R
177E.D12R
177E.D13R
177E.D14R
177E.D15R
177E.D16R
177E.D17R
177E.D18R
177E.D19R
177E.D20R
177E.D21R
177E.D22R
177E.D23R
177E.D24R
177E.D25R
177E.D26R
177E.D27R
177E.D28R
177E.D29R
177E.D30R
177E.D31R
177E.D32R
177E.D33R
177E.D34R
177E.D35R
177E.D36R
177E.D37R
177E.D38R
177E.D39R

Articolo
177E.D40R
177E.D41R
177E.D42R
177E.D43R
177E.D44R
177E.D45R
177E.D46R
177E.D47R
177E.D48R
177E.D49R
177E.D50R
177E.D51R
177E.D52R

**ALTRE A RICHIESTA**  
*OTHERS ON REQUEST*

**PINZE DI SERRAGGIO BARRA**

*WORKHOLDING COLLETS*

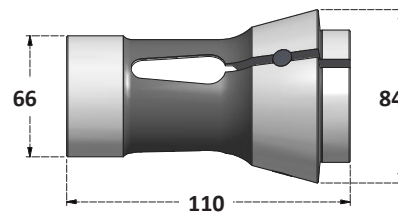


R= RIGATE  
R= GROOVED

L= LISCIE  
L=SMOOTH

E= ESAGONALI  
E= HEXAGONAL

Q= QUADRE  
Q= SQUARE



Articolo
185E.D6L
185E.D7L
185E.D8R
185E.D9R
185E.D10R
185E.D11R
185E.D12R
185E.D13R
185E.D14R
185E.D15R
185E.D16R
185E.D17R
185E.D18R
185E.D19R
185E.D20R
185E.D21R
185E.D22R
185E.D23R
185E.D24R
185E.D25R
185E.D26R
185E.D27R
185E.D28R
185E.D29R
185E.D30R
185E.D31R
185E.D32R
185E.D33R
185E.D34R
185E.D35R
185E.D36R
185E.D37R
185E.D38R
185E.D39R

Articolo
185E.D40R
185E.D41R
185E.D42R
185E.D43R
185E.D44R
185E.D45R
185E.D46R
185E.D47R
185E.D48R
185E.D49R
185E.D50R
185E.D51R
185E.D52R
185E.D53R
185E.D54R
185E.D55R
185E.D56R
185E.D57R
185E.D58R
185E.D59R
185E.D60R

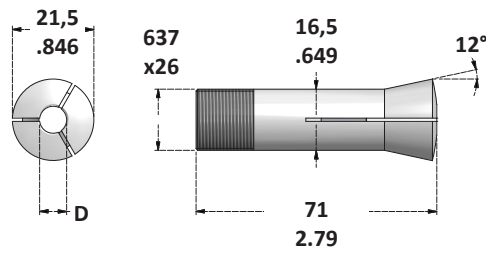
Articolo
185E.E10
185E.E11
185E.E12
185E.E13
185E.E14
185E.E15
185E.E16
185E.E17
185E.E18
185E.E19
185E.E20
185E.E21
185E.E22
185E.E23
185E.E24
185E.E25
185E.E26
185E.E27
185E.E28
185E.E29
185E.E30
185E.E31
185E.E32
185E.E33
185E.E34
185E.E35
185E.E36
185E.E37
185E.E38
185E.E39
185E.E40
185E.E41
185E.E42
185E.E43
185E.E44
185E.E45
185E.E46
185E.E47
185E.E48
185E.E49
185E.E50
185E.E51
185E.E52

Articolo
185E.Q12
185E.Q13
185E.Q14
185E.Q15
185E.Q16
185E.Q17
185E.Q18
185E.Q19
185E.Q20
185E.Q21
185E.Q22
185E.Q23
185E.Q24
185E.Q25
185E.Q26
185E.Q27
185E.Q28
185E.Q29
185E.Q30
185E.Q31
185E.Q32
185E.Q33
185E.Q34
185E.Q35
185E.Q36
185E.Q37
185E.Q38
185E.Q39
185E.Q40
185E.Q41
185E.Q42

**ALTRE A RICHIESTA**  
*OTHERS ON REQUEST*



**PINZE 3C**  
3C COLLETS



**DIMENSIONI METRICHE**

*METRIC SIZES*

Articolo
3C.D1
3C.D1,5
3C.D2
3C.D2,5
3C.D3
3C.D3,5
3C.D4
3C.D4,5
3C.D5
3C.D5,5
3C.D6
3C.D6,5
3C.D7
3C.D7,5
3C.D8
3C.D8,5
3C.D9
3C.D9,5
3C.D10
3C.D10,5
3C.D11
3C.D11,5
3C.D12
3C.D12,5

**DIMENSIONI IN POLLICI**

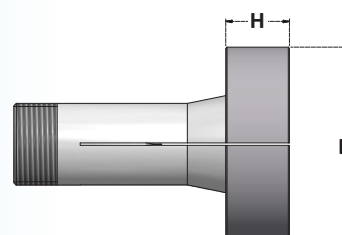
*FRACTIONAL SIZES*

Articolo
3C.D1/16
3C.D5/64
3C.D3/32
3C.D7/64
3C.D1/8
3C.D9/64
3C.D5/32
3C.D11/64
3C.D3/16
3C.D13/64
3C.D7/32
3C.D15/64
3C.D1/4
3C.D17/64
3C.D9/32
3C.D19/64
3C.D5/16
3C.D21/64
3C.D11/32
3C.D23/64
3C.D3/8
3C.D25/64
3C.D13/32
3C.D27/64
3C.D7/16
3C.D29/64
3C.D15/32
3C.D31/64
3C.D1/2

**PINZE 3C CON TESTA LAVORABILE**

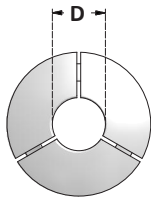
*3C MACHINABLE STEP COLLETS*

Articolo	D	H
<b>3C.STP3</b>	3" - 76mm	1 1/8 - 28,5mm

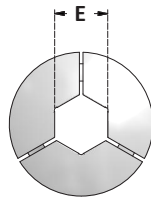


**PINZE 5C - 385E - IN POLLICI**

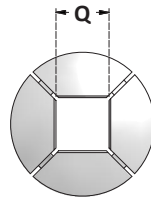
5C COLLETS - 385E - FRACTIONAL SIZES



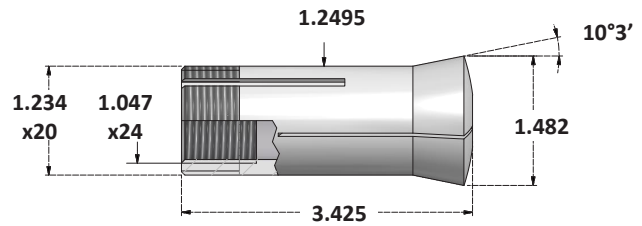
D= ROTONDE  
D= ROUND



E= ESAGONALI  
E= HEXAGONAL



Q= QUADRE  
Q= SQUARE



Articolo
5C.D1/32
5C.D3/64
5C.D1/16
5C.D5/64
5C.D3/32
5C.D7/64
5C.D1/8
5C.D9/64
5C.D5/32
5C.D11/64
5C.D3/16
5C.D13/64
5C.D7/32
5C.D15/64
5C.D1/4
5C.D17/64
5C.D9/32
5C.D19/64
5C.D5/16
5C.D21/64
5C.D11/32
5C.D23/64
5C.D3/8
5C.D25/64
5C.D13/32
5C.D27/64
5C.D7/16
5C.D29/64
5C.D15/32
5C.D31/64
5C.D1/2
5C.D33/64
5C.D17/32
5C.D35/64
5C.D9/16
5C.D37/64
5C.D19/32
5C.D39/64

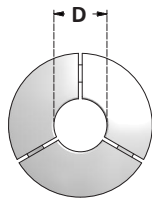
Articolo
5C.D5/8
5C.D41/64
5C.D21/32
5C.D43/64
5C.D11/16
5C.D45/64
5C.D23/32
5C.D47/64
5C.D3/4
5C.D49/64
5C.D25/32
5C.D51/64
5C.D13/16
5C.D53/64
5C.D27/32
5C.D55/64
5C.D7/8
5C.D57/64
5C.D29/32
5C.D59/64
5C.D15/16
5C.D61/64
5C.D31/32
5C.D63/64
5C.D1"
5C.D1-1/64
5C.D1-1/32
5C.D1-3/64
5C.D1-1/16
5C.D1-5/64
5C.D1-3/32
5C.D1-7/64
5C.D1-1/8

Articolo
5C.E1/8
5C.E3/16
5C.E1/4
5C.E5/16
5C.E3/8
5C.E7/16
5C.E1/2
5C.E9/16
5C.E5/8
5C.E11/16
5C.E3/4
5C.E13/16
5C.E7/8

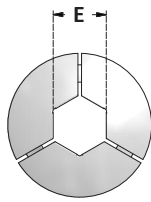
Articolo
5C.Q1/8
5C.Q3/16
5C.Q1/4
5C.Q5/16
5C.Q3/8
5C.Q7/16
5C.Q1/2
5C.Q9/16
5C.Q5/8
5C.Q11/16
5C.Q3/4

**PINZE 5C METRICHE - 385E - METRICHE**

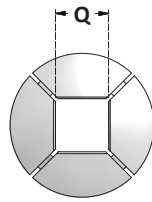
METRIC 5C COLLETS - 385E - METRIC SIZES



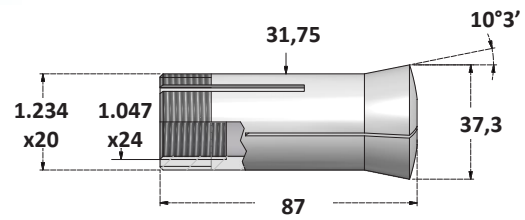
D= ROTONDE  
D= ROUND



E= ESAGONALI  
E= HEXAGONAL



Q= QUADRE  
Q= SQUARE



Articolo
5C.D1
5C.D1,5
5C.D2
5C.D2,5
5C.D3
5C.D3,5
5C.D4
5C.D4,5
5C.D5
5C.D5,5
5C.D6
5C.D6,5
5C.D7
5C.D7,5
5C.D8
5C.D8,5
5C.D9
5C.D9,5
5C.D10
5C.D10,5
5C.D11
5C.D11,5
5C.D12
5C.D12,5
5C.D13
5C.D13,5
5C.D14
5C.D14,5
5C.D15
5C.D15,5
5C.D16
5C.D16,5
5C.D17
5C.D17,5
5C.D18
5C.D18,5
5C.D19
5C.D19,5
5C.D20

Articolo
5C.D20,5
5C.D21
5C.D21,5
5C.D22
5C.D22,5
5C.D23
5C.D23,5
5C.D24
5C.D24,5
5C.D25
5C.D25,5
5C.D26
5C.D26,5
5C.D27
5C.D27,5
5C.D28

Articolo
5C.E3
5C.E4
5C.E5
5C.E6
5C.E7
5C.E8
5C.E9
5C.E10
5C.E11
5C.E12
5C.E13
5C.E14
5C.E15
5C.E16
5C.E17
5C.E18
5C.E19
5C.E20
5C.E21
5C.E22

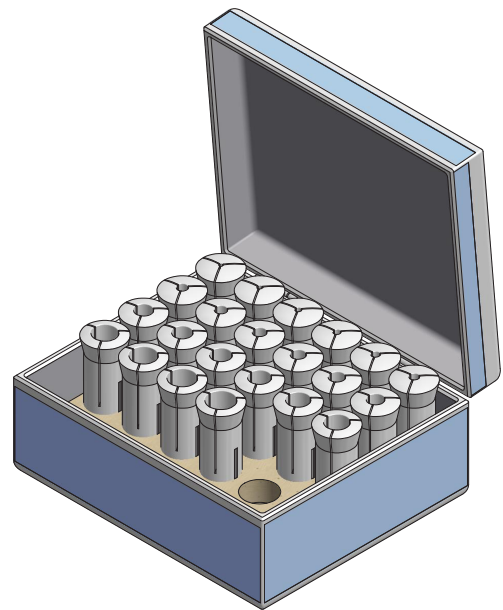
Articolo
5C.Q3
5C.Q4
5C.Q5
5C.Q6
5C.Q7
5C.Q8
5C.Q9
5C.Q10
5C.Q11
5C.Q12
5C.Q13
5C.Q14
5C.Q15
5C.Q16
5C.Q17
5C.Q18
5C.Q19

**SERIE DI PINZE 5C IN BOX**

*5C COLLETS IN BOX*

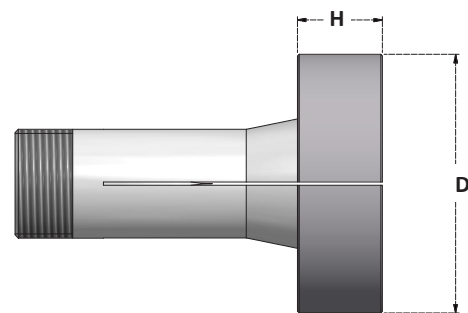
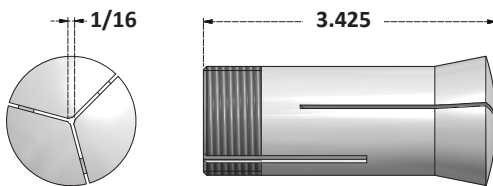
Articolo	PINZE NEL BOX COLLETS IN BOX
<b>BX.5CM-24</b>	5C.D3 ÷ D26 x 1,0mm

Articolo	PINZE NEL BOX COLLETS IN BOX
<b>BX.5CP-18</b>	5C.D1/16- 1/8- 3/16- 1/4- 5/16- 3/8- 7/16- 1/2 - 9/16- 5/8- 11/16- 3/4- 13/16- 7/8- 15/16- 1" 1-1/16- 1-1/8



**PINZE 5C LAVORABILI**

*MACHINABLE 5C COLLETS*



**PINZA 5C DI EMERGENZA**

*5C EMERGENCY COLLET*

Articolo
<b>5C-EMY</b>

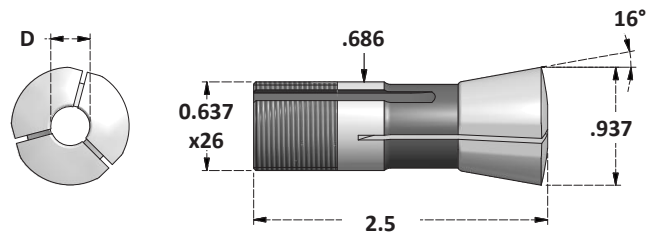
**PINZE 5C CON TESTA LAVORABILE**

*5C MACHINABLE STEP COLLETS*

Articolo	D	H
<b>5C.STP2</b>	2" - 51mm	1 1/8 - 28,5mm
<b>5C.STP3</b>	3" - 76mm	1 1/8 - 28,5mm
<b>5C.STP4</b>	4" - 102mm	1 1/8 - 28,5mm
<b>5C.STP5</b>	5" - 127mm	1 1/8 - 28,5mm
<b>5C.STP6</b>	6" - 153mm	1 1/8 - 28,5mm

**PINZE 3AT - ALESAGGI IN POLLICI**

*3AT COLLETS - FRACTIONAL SIZES*



Articolo
3AT.D3/64
3AT.D1/16
3AT.D5/64
3AT.D3/32
3AT.D7/64
3AT.D1/8
3AT.D9/64
3AT.D5/32
3AT.D11/64
3AT.D3/16
3AT.D13/64
3AT.D7/32
3AT.D15/64
3AT.D1/4
3AT.D17/64
3AT.D9/32
3AT.D19/64
3AT.D5/16
3AT.D21/64
3AT.D11/32
3AT.D23/64
3AT.D3/8
3AT.D25/64
3AT.D13/32
3AT.D27/64
3AT.D7/16
3AT.D29/64
3AT.D15/32
3AT.D31/64
3AT.D1/2

**PINZA 3AT CON TESTA LAVORABILE**

*MACHINABLE HEAD 3AT COLLET*

Articolo	D	H
3AT.STP3	3"	11/8

